

Product datasheet for **MG209907**

Xylt2 (NM_145828) Mouse Tagged ORF Clone

Product data:

Product Type:	Expression Plasmids
Product Name:	Xylt2 (NM_145828) Mouse Tagged ORF Clone
Tag:	TurboGFP
Symbol:	Xylt2
Synonyms:	E030002B02Rik; XT-II; XT2; xylT-II
Mammalian Cell Selection:	Neomycin
Vector:	pCMV6-AC-GFP (PS100010)
E. coli Selection:	Ampicillin (100 ug/mL)



[View online »](#)

ORF Nucleotide
Sequence:

>MG209907 representing NM_145828
Red=Cloning site Blue=ORF Green=Tags(s)

TTTTGTAATACGACTCACTATAGGGCGGCCGGAATTCGTCGACTGGATCCGGTACCGAGGAGATCTGCC
GCCGCGATCGCC

ATGCCAAGTCTGTGCCCGGCACTGCCAGCTGGCTGGCAAGATGAGCCCTGGCGTCCAATGGGAAGAGA
TCCGGGCCAGCAGCCTGTTGGTGGCCCTCCAGTACGCATCGCCTACATGCTGGTGGTTCACGGCCGTGC
TATCCGCCAGCTGAAGCGTCTTCTGAAGGCCGTCTACCATGAGCAACTTCTTTTATATACATGTGGAC
AAGCGTTCACACTACCTGTACCGGGAGGTAGTGGAACTGGCCAGCACTACGAGAATGTGCGGGTACAC
CTTGGCGCATGGTCACCATCTGGGGCGGGCCAGCCTTCTGAGGATGTATCTGAGGAGCATGAAGGACCT
TCTGAAAATTCCTGGCTGGACCTGGGACTTCTTCATCAACTGAGTGCCACTGACTATCCAACGAGGACG
AATGAGGAGCTGGTAGCATTCTTATCCAAGAACCAGGACAAGAATTTCTCAAGTCACATGGGCGAGACA
ATTCAGGTTTATTAAGAAGCAAGGCTGGACCGGCTTTCCATGAGTGTGATCCACATGTGGCGCT
GGGTGAACGGCAGATCCCGCAGGCATTGTGGTGGATGGTGGCTCTGACTGGTTTGTGCTGACACGCAGC
TTTGTGGAATATGTTGTATACAGATGACCCCTCGTGGCCAGCTTCGCCAGTTCTATACATACACAT
TGCTTCCGGCTGAGTCATTCTTCCACACAGTGTGGAGAACAGCCCGGCCTGTGCGAGCCTGGTGGACAA
CAACTGCGGGTCACTGGAACCGCAAGCTGGGCTGCAATGCCAGTACAAGCACATCGTGGACTGG
TGCGGCTGCTCCCCAACGACTTCAAGCCACAGGACTTCTGAGGCTTACGAAGTCTCCAGACCCACCT
TCTTTGCCGGAAGTTCGAGTCGACTGTGAACCAGGAAGTCTGGAAATTTGGACTTCCATCTATATGG
CAGTACCCACCCAGCACACCAGCCCTCAAAGCCTACTGGGAGAACATCTACGACGTGGCCGATGGCCCT
GGCGGACTCAGCGAGTCTACTCACAGCCTACACAGCCTTTGCCGCTCAGCCTGCGTCATGCTGCCA
CTGCTGTATCCCCTGACCCTGCAGTCTGCAGTTTGGAGCCAGGGGTTGCCGTCAGCGTGCACCT
GTATTTCTATGACGACCATTTCCAGGGCTACCTGGTGACGCAGGCGGTGCAGCCCTCAGCCAGGGGCCA
GCAGAGACACTTGAGATGTGGCTGATGCCCCAGAGGTCGCTGAAGCTGTTGGGGCACAGTACCAGGCCA
GCCGGCTCCAGAGTCTGGAGTTGGTACTGAGTGGGACCCCAAAGAAGCTCTTCCGGAATTTGGGGG
CCTGCTGGGACCACTGGATGAGCCTGTAGCCATGCAGCGCTGGGCCGGGGCCCCAACCTCACAGCCACT
GTGGTCTGGATTGACCCACCTATGTTGTGGCCACATCGTATGACATCACGGTAGATGGGATACCGAAG
TCACGCAGTACAAGCCTCCACTGAGCCTGCCACTGCGGCCGGGAGCCTGGACTGTCCGCTTGCTCAGTT
CTGGGAACCCCTGGGTGAGACCCGCTTCTCGTCTGCCGTTGACGTTCAACCGCAAACCTCTCAGG
AAAGATGATGCCAGCTGGCTGCATGCGGGACACCCACAACGAATACATGGAGCAGAGTTTCCAGGGCC
TAAGTGGCATCCTGAATCTGCCTCAGGCAGAGGCCCTGGAGGAGGCTGCCCGGAGGCACACAGAGCTCAC
GGTTCTGCACCTGAGGCTGGACAGATGGGAACTGAGCAATTTCTGGTCTGTGGCAGGATTGTGTGCC
ATAGGACCTTCTGCTTGTCCCTCCCTGGAGCTCTGCAGACTGACCAGCTGGAGCTCTGTCTCCTGACC
CCAAGTCAGAGCTGGGGCTGTCAAAGCTGACGGGCGACTCAGG

ACGCGTACGCGGCCGCTCGAG – GFP Tag – GTTTAA

Protein Sequence: >MG209907 representing NM_145828
 Red=Cloning site Green=Tags(s)

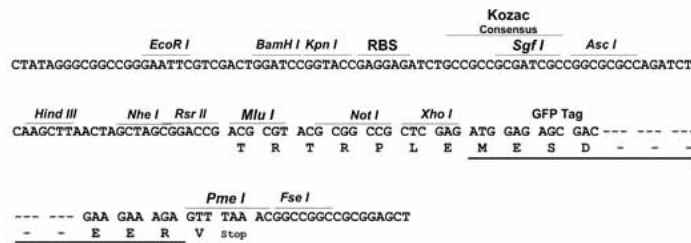
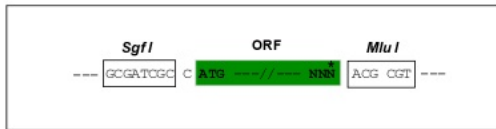
MPKSVPRHQC LAGKMSPGVQWEEIRAQQPVGGPPVRIAYMLVVHGRAIRQLKRLKAVYHEQHFFYIHVD
 KRSNLYREVVELAQHYENVRVTPWRMVTIWGGASLLRMYLRSMKDLEIPGWTWDFFINLSATDYPTRT
 NEELVAFLSKNRDNFLKSHGRDNSRFIKKQGLDRLFHECDSHMWRLGERQIPAGIVVDGGSDWFLTRS
 FVEYVVYTD DPLVAQLRQFYTYTLLPAESFFHTVLENSPACASLVDNNLRVTNWNRKLGCKCQYKHIVDW
 CGCSPNDFKPQDFLRLQVSRPTFFARKFESTVNQEVLEILDFHLYGSPYPPSTPALKAYWENIYDVADGP
 GGLSDVLLTAYTAFARLSLRHAATAVSPLATAVCRFEPRLPSSVHLYFYDDHFQGYLVTVQAVQPSAQGP
 AETLEMWLMQPSLKLGHSDQASRLQSLEVGTEWDPKERLFRNF GGLLGPLDEPVAMQRWARGPNLTAT
 VVWIDPTYVVVATSYDITVDADTEVTQYKPLSLPLRPGAWTVRLLQFWEPLGETRFLVPLTFNRKPLR
 KDDASWLHAGPPHNEYMEQSFQGLSGILNLPQAEALEEAARRHTELTGSALEAWTDGELSNFWSVAGLCA
 IGPSACPSLELCRLTSSSLSPDPKSELGPVKADGRLR

TRTRPLE - GFP Tag - V

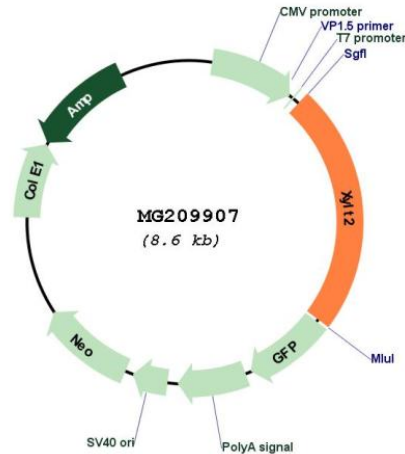
Restriction Sites: SgfI-MluI

Cloning Scheme:

Cloning sites used for ORF Shuttling:



Plasmid Map:



ACCN: NM_145828

ORF Size: 2004 bp

OTI Disclaimer: The molecular sequence of this clone aligns with the gene accession number as a point of reference only. However, individual transcript sequences of the same gene can differ through naturally occurring variations (e.g. polymorphisms), each with its own valid existence. This clone is substantially in agreement with the reference, but a complete review of all prevailing variants is recommended prior to use. [More info](#)

OTI Annotation: This clone was engineered to express the complete ORF with an expression tag. Expression varies depending on the nature of the gene.

Components: The ORF clone is ion-exchange column purified and shipped in a 2D barcoded Matrix tube containing 10ug of transfection-ready, dried plasmid DNA (reconstitute with 100 ul of water).

Reconstitution Method:

1. Centrifuge at 5,000xg for 5min.
2. Carefully open the tube and add 100ul of sterile water to dissolve the DNA.
3. Close the tube and incubate for 10 minutes at room temperature.
4. Briefly vortex the tube and then do a quick spin (less than 5000xg) to concentrate the liquid at the bottom.
5. Store the suspended plasmid at -20°C. The DNA is stable for at least one year from date of shipping when stored at -20°C.

RefSeq: [NM_145828.1](#)

RefSeq Size: 2939 bp

RefSeq ORF: 2598 bp

Locus ID: 217119

UniProt ID: [Q9EPL0](#)

Cytogenetics: 11 D

Gene Summary: Catalyzes the first step in the biosynthesis of chondroitin sulfate, heparan sulfate and dermatan sulfate proteoglycans, such as DCN (PubMed:17517600). Transfers D-xylose from UDP-D-xylose to specific serine residues of the core protein (By similarity).[UniProtKB/Swiss-Prot Function]