

Product datasheet for **MG209890**

Tnk1 (BC029623) Mouse Tagged ORF Clone

Product data:

Product Type:	Expression Plasmids
Product Name:	Tnk1 (BC029623) Mouse Tagged ORF Clone
Tag:	TurboGFP
Symbol:	Tnk1
Synonyms:	Kos1; Tnk1a; Tnk1b
Mammalian Cell Selection:	Neomycin
Vector:	pCMV6-AC-GFP (PS100010)
E. coli Selection:	Ampicillin (100 ug/mL)



[View online »](#)

ORF Nucleotide
Sequence:

>MG209890 representing BC029623
Red=Cloning site Blue=ORF Green=Tags(s)

TTTTGTAATACGACTCACTATAGGGCGGCCGGGAATTCGTCGACTGGATCCGGTACCGAGGAGATCTGCC
GCCGCGATCGCC

ATGCTCCCTGAAGCCAGTCCCTGTGGCTCCTTCGGCTACTCCGGGATGTTCAACTGGCCAGTTTTACC
GGCCCATCCTTGAGGAACCAACGTCACTCGGCCAGAACATTTTACTTTGTAAGGCCTGAGGACCTGGA
CAACATAGGCATGGCAGGCCTGCCAGCGCAGACTTAATGAAGCCCTGAAGAGGTACCGGTCAGGGGTC
AAGTCCAAGAATTGGGTGTACAAGATACTGGGGCTTTGCTCCCGAACAGAAGGAGATCCCTCCACGCT
CAGACAGTCTCTGTGCTTCCATGAGCCAGAGGGGGACTCAAGTGTCTGATTCCAGAGGGTGTGTGCG
CAGAGGGGAGCTGCTGGGTTCAAGCTGCTTTGGTGTGTACATCGAGGGTATGGACACTACCCAGTGGG
CAGAGTATCCAGTGGCGGTCAAGTCCCTCCGTGGGTCCGAGGGTCCGATGGGCACAGAAGTGGGCG
ACTTCTCGGGGAAGTATCTGTCATGATGAAGCTAGAGCACCCACACGTGCTGCGCTGCATGGCCTCGT
ACTGGGCCAGCCTCTACAGATGGTATGGAAGTTCGCGCCACTGGGCTCCCTGCATACGCGCTGACTGCC
CCAGCACCGACACCCCACTGCCTGTGGCCCTGCTGTGCCTTTTTCTGCGTCAGTTGGCAGGAGCCATGG
CGTACTTGGGGTCTGTGGGTTAGTGCACCCGGATCTCGCCACCCGCAACCTGCTGCTGGCCTCACCTCG
AATGATCAAGGTGGCGGATTTTGGACTGGTTCGGCCACTGGGAGGCGCCCGGGGACGCTACGTCATGGGC
GGGCCCGTCTATCCCTATGCCTGGTGTGCCCCAGAGAGCCTACGCCAGGGAGCCTTCTCGTCTGCCT
CTGATGTGTGGATGTTTGGCGTGACACTCTGGGAAATGTTTTCTGGAGGTGAGGAACCTGGGCAGGTGT
CCCACCATATCTCATCTACAGCGACTGGAGAAGGACCGAGCCAGGCTGCCAAAGCCTCCCTGTGTTCC
AGGGCCCTCTACTCCCTCGCCTTGGCTGCTGGGCCACACCTGCAGACCGGCCTAGCTTTTCCAACC
TGAAGGGGCTGCTTCAAGAGGCTTGGCTTCTGAGGGACGCTGTGTGAGGGAGGTCACAGAGCCAGGTGC
TTTGCGGATGGAACCCGGTGACCCCATCACTATCATTGAGGGCAGCCTGGACACTGCAACCTGGAAGGC
CAGAATGGCCGGACCCTCAAAGTGGGCAACTTCCGGCTTCCGAGTGACACTAGCAGACTTGGGGGTT
CACCAGTACCCATCCAGCCACAGAGTTCCTGCCCATGGAGAGAAATGCAGAGGGGACAGATGG
GGACAGAGAGAAGGCAACGTTACAAGACCTACCCCGACGAGCCACAGAACGAAGATGCCCTGCAG
AGGATGCGAGGCATTTCCAAGAGTCTGGAATCAGTTCTGTCCCTGGGCCCTAGACCCACAGGAGGTGTT
CAAGTCTCCAGAACTTCGGCGTACAAGAGCTATGCCGAAAGACTCCAGACCTACCTCCACGCCACC
AGACCTGCCTCCACGCCACCTATTATCTGCAACTCTTCTCAGCCACCCAGCCCAAAAGCCCGGCC
AAAAGAGAATCCTCACATAATCACCGCACTGGAGCACCTGGAGCCAGCAAAGCCACTGTCCCTCTGGAG
GTCCCTTGTGAGACCCGAGTGGCAGAGGAAGTTGTAGAGGTAGAGCTGAGTGTGCATGGTGTACCTA
CCAGGAGTGCCAAGTGGCACTCAGAACCACTGGGGGAGATGTGGCTTCTGCTATCCGGAACCTCAAGGTA
GACCAGCTCTTCCACCTTAGTAACCGGTCCCGAGCAGACTGTCGTGCGATCCTGGAGCATCACCAGTGGG
ACCTGTCAGCAGCCAGTCGCTACATCCTAGCCCGTCC

ACGCGTACGCGGGCGCTCGAG - GFP Tag - GTTTAA

Protein Sequence: >MG209890 representing BC029623
 Red=Cloning site Green=Tags(s)

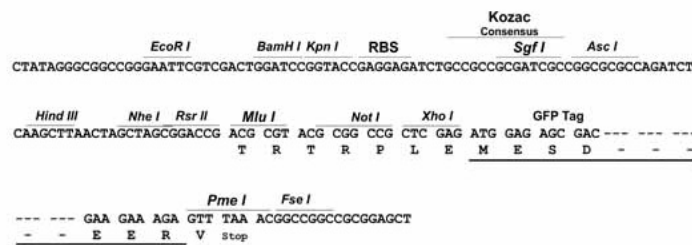
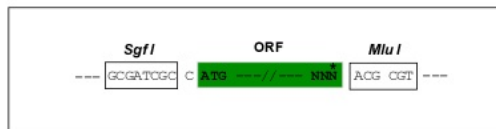
MLPEASSLWLLRLLRDVQLAQFYRPILEELNVTRPEHDFVVRPEDLDNIGMRPAQRRLNEALKRYRSGV
 KSKNWVYKILGGFAPEQKEIPRSDSPLCFHEPEGGLKCLIPEGAVRRGELLGSGCFGVVHRGLWTLPSG
 QSIPVAVKSLRVGPEGPMGTELGDFLREVSVMKLEHPHVLRHLGLVLGQPLQVMELAPLGS LHTRLTA
 PAPTPLPVALLCLFLRQLAGAMAYLGSCGLVHRDLATRNLLASPRMIKVADFGLVRLPGGARGRYVMG
 GPRPIPYAWCAPESLRQGAFFSSASDVWMFVTLWEMFSGGEEPWAGVPPYLILQRLEKDRARLPKPLCS
 RALYSLALRCWAPHPADRPFSNLEGLLQEAWLSEGRVCREVTEPGALRMEPGDPIITIEGSLDTATWKG
 QNGRTLKVGNFASAVTLADLGGSPVTHPAHRGSPAHEGKCRGGTDGDREKATLQDLPPARSHRTKMLPQ
 RMRGISKLESVLSLGRPTGGGSSPELRRTRAMPQRLPDLPPRPDLPPRPPIICNSSQTPQHKARP
 KRESSHNHRTGAPGASKATVPSGGPLSDPEWQRKVVEVELSVHGVTYQECQVALRTTGGDVASAIRNLKV
 DQLFHLNRSRADCRRILEHHQWDL SAASRYILARS

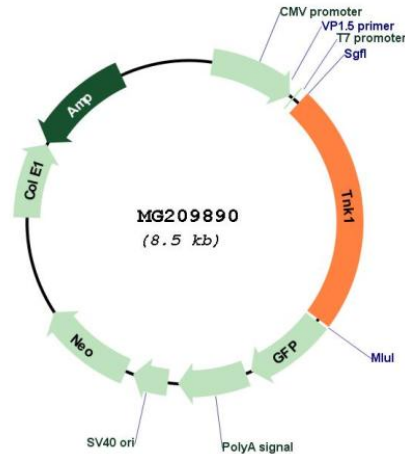
TRTRPLE - GFP Tag - V

Restriction Sites: SgfI-MluI

Cloning Scheme:

Cloning sites used for ORF Shuttling:



Plasmid Map:


ACCN: BC029623

ORF Size: 2000 bp

OTI Disclaimer: Due to the inherent nature of this plasmid, standard methods to replicate additional amounts of DNA in *E. coli* are highly likely to result in mutations and/or rearrangements. Therefore, OriGene does not guarantee the capability to replicate this plasmid DNA. Additional amounts of DNA can be purchased from OriGene with batch-specific, full-sequence verification at a reduced cost. Please contact our customer care team at custsupport@origene.com or by calling 301.340.3188 option 3 for pricing and delivery.

The molecular sequence of this clone aligns with the gene accession number as a point of reference only. However, individual transcript sequences of the same gene can differ through naturally occurring variations (e.g. polymorphisms), each with its own valid existence. This clone is substantially in agreement with the reference, but a complete review of all prevailing variants is recommended prior to use. [More info](#)

OTI Annotation: This clone was engineered to express the complete ORF with an expression tag. Expression varies depending on the nature of the gene.

Components: The ORF clone is ion-exchange column purified and shipped in a 2D barcoded Matrix tube containing 10ug of transfection-ready, dried plasmid DNA (reconstitute with 100 ul of water).

Reconstitution Method:

1. Centrifuge at 5,000xg for 5min.
2. Carefully open the tube and add 100ul of sterile water to dissolve the DNA.
3. Close the tube and incubate for 10 minutes at room temperature.
4. Briefly vortex the tube and then do a quick spin (less than 5000xg) to concentrate the liquid at the bottom.
5. Store the suspended plasmid at -20°C. The DNA is stable for at least one year from date of shipping when stored at -20°C.

RefSeq: [BC029623](#), [AAH29623](#)

RefSeq Size: 2693 bp

RefSeq ORF: 2000 bp

Locus ID: 83813

Cytogenetics: 11 B3

Gene Summary: May function in signaling pathways utilized broadly during fetal development and more selectively in adult tissues and in cells of the lymphohematopoietic system. Could specifically be involved in phospholipid signal transduction (By similarity). Involved in negative regulation of cell growth. Has tumor suppressor properties. Plays a negative regulatory role in the Ras-MAPK pathway.[UniProtKB/Swiss-Prot Function]