

Product datasheet for **MG209877**

Clptm1 (NM_019649) Mouse Tagged ORF Clone

Product data:

Product Type:	Expression Plasmids
Product Name:	Clptm1 (NM_019649) Mouse Tagged ORF Clone
Tag:	TurboGFP
Symbol:	Clptm1
Synonyms:	HS9; N14
Mammalian Cell Selection:	Neomycin
Vector:	pCMV6-AC-GFP (PS100010)
E. coli Selection:	Ampicillin (100 ug/mL)



[View online »](#)

ORF Nucleotide
Sequence:

>MG209877 representing NM_019649
 Red=Cloning site Blue=ORF Green=Tags(s)

TTTTGTAATACGACTCACTATAGGGCGGCCGGGAATTCGTCGACTGGATCCGGTACCGAGGAGATCTGCC
 GCC**CGGATCGCC**

ATGGCGGGCGCAGGAGCGGACGGGGCCGGCAGCGCCGTGGTGGCGGGGGGGAGGCAGCTCTGGTC
 AGGTGACCAGCAATGGCAGCATTGGGAGGGACACGCCAGCCGAGACCCAGCCTCAGAACCCCTCCACCCCA
 GCCAGCCCCAACGCCTGGCAGGTCATCAAAGGCGTTCTGTTTCAGGATCTTCATCATCTGGGCCATCAGC
 AGCTGGTTCGCCGAGGGCCGTCCTCAGGACCAGTCAGGCCCTGGAGGGGGCCCCACGTGTCGCCAGCC
 GAAACCTATCCCAAAGACTCTAATGAACCTGCACGTGTACATCTCAGAGCACGAGCACTTCACAGA
 CTTCAACGCCACCTCGGCGCTCTTCTGGGAGCAGCATGACCTGGTGTATGGTACTGGACCAGTGGAGAG
 AACTCTGATGGCTGCTACGAGCACTTTCAGAGCTTGCATCCCACAGAGTGTACAGCAGAATGGCTCCA
 TCTATATCCATGTCTACTTCACTAAGAGTGGCTCCATCCAGACCCCGCAGAAGGCCCTGTACCGCCG
 GCTTGCCACTGTCCACATGTCCCGGATGATCAACAAATACAAGCGTAGGGGATTTAGAAAACCAAGAAC
 CTAAGTACAGGAGAGACAGAAGCTGACCCAGAAATGATCAAGAGGGCTGAGGACTATGGCCCTGTAGAAG
 TAATCTCGCACTGGCACCCCAACATCACCATCAACATCGTGGATGACCACACACCATGGGTGAAGGGCAG
 TGTGCCACCCCACTGGACCAATATGTGAAGTTTGTGCGGTGAGTGGTACTACTACCCCATCATCTAT
 TTCAATGACTACTGGAACCTGCAGAAGGATTACTACCCATTAATGAGAGTCTGGCCAGCCTACCACTGC
 GTGTCTCTTTCTGCCCGTGTACTATGGCGCTGGCAACTCTATGCTGCACAGAGTACCAAGTCAACCTG
 GAACTTCTTAGGTGACGAGCTGTATGAGCAATCGGATGAGGAGCAGGATTCAGTGAAGTTGCTCTGCTG
 GAAACCCAGCCCGTATCTTCTGGCACTCACCATCATCGTCTCATTGTCCACAGTGTCTTTGAGTTCCCTGG
 CTTTCAAAAATGACATTCAGTTCTGGAACAGTCGTCAGTCTTGGAGGGGCTGTCAGTGGCTCCGCTCTT
 CTTTGGCGTTTTCCAGTCCTTTGTGGTTCTCCTTTACATCCTGGACAATGAGACCAACTTTGTGGTACAG
 GTCAGCGTCTTCATTGGGGTCTCATCGACCTCTGGAAGATTACCAAAGTCATGGACGTCGGCTGGACC
 GGGAGCATAGAGTGGCAGGAATCTTCCCTTGCCCAACCTTCAAAGACAAGTCCACCTATATTGAATCTTC
 AACCAAAGTATATGATGATATGGCGTTCGGGTACCTGTGATGGATCCTCTTTCCCTTGGTGGGCTGCTAT
 GCCGTCTACAGCCTTCTGTACCTGGAGCACAAGGGCTGGTACTCCTGGGTGCTCAGCATGCTCTACGGTT
 TCCTGCTGACCTTTGGCTTCATCACTATGACACCACAGCTCTTCATCACTATAAGCTCAAGTCTGTGGC
 CCATTTGCCCTGGCGGATGCTCACCTACAAGGCCCTCAACTTTTATTGATGACTTATTTGCCTTTGTC
 ATCAAGATGCCTGTGATGATACCGGATCGGCTGCCTGCGGGATGATGTGGTTTTTCTCATCTACCTTACC
 AACGGTGGATCTACCGCGTCGACCCACCCGTGTGAACGAGTTCCGGTATGAGTGGAGAGGATGTCTCAGC
 AGCGGCATCCAGGGCCAGGCATCCACTGCAGCAGGGGCTCTCACACCTGCACCCAGCACAGCTGTGAGC
 GGAGAGGATGCCTCCACAGTCCCAAAGGCCACTTCTGGGGCTGCACTGCCAGCCAGCCCCAGGAAGCCC
 CTCCAAAGCCAGCAGAGGACAAGAAAAGGAT

ACGCGTACGCGGGCCGCTCGAG - GFP Tag - GTTTAA

Protein Sequence: >MG209877 representing NM_019649
 Red=Cloning site Green=Tags(s)

MAAAQEADGAGSAVVAAGGGSSGQVTSNGSIGRDTPAETQPQNPPQPAPNAWQVIKGVLFRIIFIWAIS
 SWFRRGSPQDQSGPGGAPRVASRNLFPKDTLMNLHVYI SEHEHFTDFNATSALFWEQHDLVYGDWTSGE
 NSDGCYEHAELDIPQSVQNGSIYIHVYFTKSGFHPDPRQKAL YRRLATVHMSRMINKYKRRRFQKTKN
 LLTGETEADPEMIKRAEDYGPVEVISHWHPNITINIVDDHTPWVKGSVPPPLDQYVKFDAVSGDYYPPIY
 FNDYWNLQKDYYPINESLASLPLRVSFCLSLWRWQLYAAQSTKSPWNFLGDELYEQSDEEQDSVKVALL
 ETSPYLLALTIIVSIVHSVFELAFKNDIQFWSRQSLLEGLSVRSVFFGVFQSFVVLLYILDNETNFVVQ
 VSVFIGVLIDLWKITKVM DVRLDREHRVAGIFPCPTFKDKSTYIESSTKVYDDMAFRYLSWILFPLLGCY
 AVYSLLYLEHKGWYSWLSMLYGFLLTFGFITMTPQLFINYKLSVAHLPWRMLTYKALNTFIDDLFAFV
 IKMPVMYRIGCLRDDVVFFIYLQYRWIYRVDPTRVNEFGMSGEDVSAASRAQASTAAGALTPAPSTAVS
 GEDASTVPKATSGACTASQPQEAPPKPAEDKKK

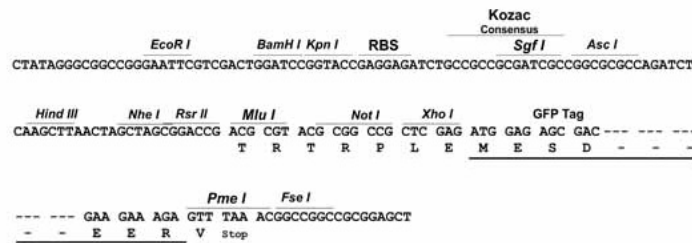
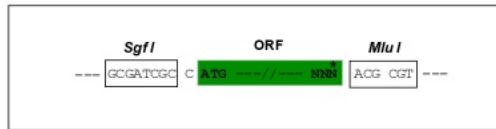
TRTRPLE - GFP Tag - V

Restriction Sites:

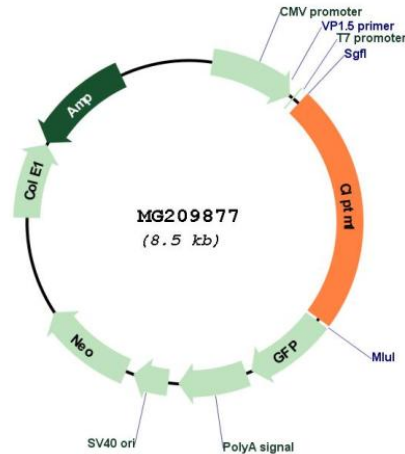
Sgfl-MluI

Cloning Scheme:

Cloning sites used for ORF Shuttling:



Plasmid Map:



ACCN: NM_019649

ORF Size: 1992 bp

OTI Disclaimer: The molecular sequence of this clone aligns with the gene accession number as a point of reference only. However, individual transcript sequences of the same gene can differ through naturally occurring variations (e.g. polymorphisms), each with its own valid existence. This clone is substantially in agreement with the reference, but a complete review of all prevailing variants is recommended prior to use. [More info](#)

OTI Annotation: This clone was engineered to express the complete ORF with an expression tag. Expression varies depending on the nature of the gene.

Components: The ORF clone is ion-exchange column purified and shipped in a 2D barcoded Matrix tube containing 10ug of transfection-ready, dried plasmid DNA (reconstitute with 100 ul of water).

Reconstitution Method:

1. Centrifuge at 5,000xg for 5min.
2. Carefully open the tube and add 100ul of sterile water to dissolve the DNA.
3. Close the tube and incubate for 10 minutes at room temperature.
4. Briefly vortex the tube and then do a quick spin (less than 5000xg) to concentrate the liquid at the bottom.
5. Store the suspended plasmid at -20°C. The DNA is stable for at least one year from date of shipping when stored at -20°C.

RefSeq: [NM_019649.2](#), [NP_062623.2](#)

RefSeq Size: 4147 bp
RefSeq ORF: 1995 bp
Locus ID: 56457
UniProt ID: [Q8VBZ3](#)
Cytogenetics: 7 A3
Gene Summary: May play a role in T-cell development.[UniProtKB/Swiss-Prot Function]