

Product datasheet for **MG209858**

Ggt7 (NM_144786) Mouse Tagged ORF Clone

Product data:

Product Type:	Expression Plasmids
Product Name:	Ggt7 (NM_144786) Mouse Tagged ORF Clone
Tag:	TurboGFP
Symbol:	Ggt7
Synonyms:	1110017C11Rik; 6330563L03Rik; Ggtl3
Mammalian Cell Selection:	Neomycin
Vector:	pCMV6-AC-GFP (PS100010)
E. coli Selection:	Ampicillin (100 ug/mL)



[View online »](#)

ORF Nucleotide
Sequence:

>MG209858 representing NM_144786
Red=Cloning site Blue=ORF Green=Tags(s)

TTTTGTAATACGACTCACTATAGGGCGGCCGGGAATTCGTCGACTGGATCCGGTACCGAGGAGATCTGCC
GCCGCGATCGCC

ATGGCGGCTGAGAACGAGGCTAGCCAGGAGAGCGCCCTAGGCGCCTACTCACCAGTGGACTATATGAGCA
TCACCAGCTTCCCGAGGCTGCCGAGGACGAGCCAGCCCTGCGGCCCACTGAGGGCCGTAAGGACGA
GGACGCTTCTTGGGAGACCCGGATACTGACCCGACTCCTTCCTCAAGTCTGCCCGGCTTCAGCGGCTG
CCTTCGTCGTCATCGGAGATGGGACGCCAGGACGGGTACCATTACGGGAGACTCGCAAGGACCCATTCT
CAGCTGCAGCAGCAGAGTGTCTTCCGCCAGGATGGGCTCACGGTCATTGTACCAGCCTGCCTCACTTT
TGCCACAGGTGTACCCTGGCGCTGGTCATGCAAATCTACTTCGGGGATCCCCAGATCTCCAGCAGGGT
GCTGTGGTGACGGATGCCTCCATTGCACGGCGCTGGGCATGGAGGTGCTCAGTAAACAGGGCTCTTCAG
TGGATGCAGCTGTGGCCGACGCTTGTGTTTGGGGATTGTGGCTCCACACAGTTCTGGCCTGGGCGGTGG
GGCGTGATGTTGGTACATGATATCCGGCGGAATGAGAGCCACCTAATTGATTTCCGGGAGTCTGCACCC
GGGGCCCTCAGAGAAGAGGCTCTGCAGAGATCCTGGGATACCAAGCCTGGGCTCTTGGTGGGGGTCCCCG
GAATGGTGAAGGGTTACATGAAGCTCACAGCTCTATGGCAGGCTGCCCTGGTCCCAAGTCTGGCCTT
CGCAGCAGCTGTGGCCCAAGATGGCTTCAACGTGACCCATGATCTAGCTCATGCCTTGGCTGAGCAGCTG
CCTCCCAATGCATCTGACCGCTTCTGGATACTTCTGCCACTGGGCCACCCACCTTGCCTGGCTCCC
TGCTGCGACGGCTGATCTCGCTGAGGTACTGGATATACTCGGCACCTCTGGCCCTGCTGCCTTCTACAA
TGGTGGCAACCTCACACTGGAGATGGTGGCTGAGGCTCAGCACGAGGTGGTGTACATAACCGAGGAGGAC
TTCAGCAACTATAGTCTCTCACGGAGAAGCCTGTGTGGAGTGTACCGAGGCCACCTGGTTCTCAGCC
CCCCACCCACACAGGCCCGCCCTCATCAGTGCTCTCAACATCCTGGAGGGCTTCAACCTCACCCAG
CCTGGTGTCCCGTGAGCAAGCGCTTCACTGGGTAGCAGAGACCCTGAAGATTGCATTGGCCCTGGCTAGC
AGACTGGGAGACCCTGTCTATGATTCTACCATCACTGAGAGCATGGACGACATGCTCAGCAAGGTGGAGG
CCGCCAATTCGGGGCCACATCAGTACTCTCAGGCAGCCCTGCCCACTCCTGCCTGTCTATGAGCT
GGATGGGGCTCCCACTGCTGCCAGGTGCTGGTCATGGGCCCTGATGACTTCATCGTAGCCATGGTCAGC
TCCCTGAACCGGCCTTTTGAAGTGGCCTCCTCACTCCCTCCGGGATCCTTCTCAACAGCCAGATGCTAG
ACTTCTCCTGGCCCAACAGGACAGCCAACCACTCTGCACCCAGCCTGGAGAACTCGGTACAGCCAGGGAA
GCGGCCCTCTCTTCTTCTGCCACTGTAGTCCGACCAGCAGAAGGGCTCTGTGGACCTACCTCGCT
CTGGGGCCAATGGAGCTGCTCGAGGCCTCAGTGGCCTGACCCAGGTTCTACTGAATGCTCCTGACCTTGA
ACAGGAACCTGAGTGACAGCCTGGCCCGAGGACGCTCCACCCAGACCTGCAGTCCAACCTCCTGCAGGT
TGACAGTGAGTTCAGTGAAGAGATTGAGTTCCTGGAAGCCAGGGGTACCACGTGGAGAAGGTAGAT
GTCTTATCCTGGGTCCACGGCAGTCCGAGAACCAACACCTTATCATCGGTGTGAAGGACCTCCGGAGCC
CGGATGCAGCTGGAGCCACCATCCTG

ACGCGTACGCGGCCGCTCGAG - GFP Tag - GTTTAA

Protein Sequence: >MG209858 representing NM_144786
 Red=Cloning site Green=Tags(s)

MAAENEASQESALGAYSPVDYMSITSFPRLPEDEPAPAAPLRGRKDEDAFLGDPDTPDPSFLKSARLQRL
 PSSSSEMGSDGSPLRETRKDPFSAAAAECSQRDGLTVIVTACLTFATGVTVALVMQIYFGDPQIFQQG
 AVVTDASHCTALGMEVLSKQGSVDAVAAALCLGIVAPHSSGLGGGVMLVHDIRRNESHLDIFRESAP
 GALREEALQRSWDTKPGLLVGVPGMVKGLHEAHQLYGRLPWSQVLAFAAAVAQDGFNVTHDLAHLAEQL
 PPNASDRFLDTFLPLGHPPLPGSLLRRPDLAEVL DILGTSGPAAFYNGGNLTLEMVAEAQHAGGVITEED
 FSNYSALTEKPVCGVYRGLVLSPPPPHTGPALISALNILEGFNLTSLSVSREQALHWVAETLKIALALAS
 RLGDVYDSTITESMDDMLSKVEAANFRGHISDSQAAPAPLLPVYELDGAPTAQVLMGPDFFIVAMVS
 SLNRPFSGSLLTPSGILLNSQMLDFSWPNRTANHSAPLENSVQPGKRPLSFLLPVVRPAEGLCGTYLA
 LGANGAARGLSGLTQVLLNVLTNRNLSDSLARGRLHPDLQSNLLQVDSEFTEEEIEFLEARGHHVEKVD
 VLSWVHGSRRNTTFIIGVKDPRSPDAAGATIL

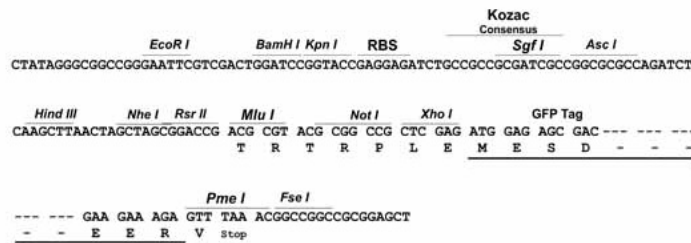
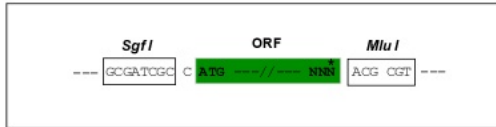
TRTRPLE - GFP Tag - V

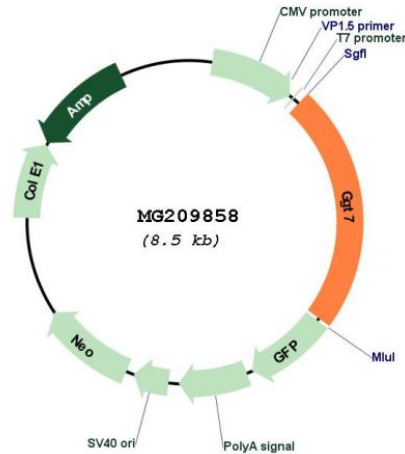
Restriction Sites:

Sgfl-MluI

Cloning Scheme:

Cloning sites used for ORF Shuttling:



Plasmid Map:


ACCN: NM_144786

ORF Size: 1986 bp

OTI Disclaimer: The molecular sequence of this clone aligns with the gene accession number as a point of reference only. However, individual transcript sequences of the same gene can differ through naturally occurring variations (e.g. polymorphisms), each with its own valid existence. This clone is substantially in agreement with the reference, but a complete review of all prevailing variants is recommended prior to use. [More info](#)

OTI Annotation: This clone was engineered to express the complete ORF with an expression tag. Expression varies depending on the nature of the gene.

Components: The ORF clone is ion-exchange column purified and shipped in a 2D barcoded Matrix tube containing 10ug of transfection-ready, dried plasmid DNA (reconstitute with 100 ul of water).

Reconstitution Method:

1. Centrifuge at 5,000xg for 5min.
2. Carefully open the tube and add 100ul of sterile water to dissolve the DNA.
3. Close the tube and incubate for 10 minutes at room temperature.
4. Briefly vortex the tube and then do a quick spin (less than 5000xg) to concentrate the liquid at the bottom.
5. Store the suspended plasmid at -20°C. The DNA is stable for at least one year from date of shipping when stored at -20°C.

RefSeq: [NM_144786.1](#), [NP_659035.1](#)

RefSeq Size: 2597 bp
RefSeq ORF: 1989 bp
Locus ID: 207182
UniProt ID: [Q99JP7](#)
Cytogenetics: 2 H1
Gene Summary: Cleaves glutathione conjugates.[UniProtKB/Swiss-Prot Function]