

Product datasheet for **MG209853**

Hdc (NM_008230) Mouse Tagged ORF Clone

Product data:

Product Type:	Expression Plasmids
Product Name:	Hdc (NM_008230) Mouse Tagged ORF Clone
Tag:	TurboGFP
Symbol:	Hdc
Synonyms:	AW108189; Hdc-a; Hdc-c; Hdc-e; Hdc-s
Mammalian Cell Selection:	Neomycin
Vector:	pCMV6-AC-GFP (PS100010)
E. coli Selection:	Ampicillin (100 ug/mL)



[View online »](#)

ORF Nucleotide Sequence:

>MG209853 representing NM_008230
 Red=Cloning site Blue=ORF Green=Tags(s)

TTTTGTAATACGACTCACTATAGGGCGGCCGGAATTCGTCGACTGGATCCGGTACCGAGGAGATCTGCC
 GCC**GCGATCGCC**

ATGATGGAGCCCTGTGAATACCGTGAATACCGTGAATACTACCGAGCTAGAGGAAAGAGATGGTGGATT
 ACATCTCCAGTACCTGAGCACTGTGCGGAGAGGCAGGTGACTCCAAATGTGCAGCCTGGATACCTGCG
 AGCCAGCTACCTGCGAGTGCTCCCGAGGAACCCGACAGCTGGGACAGCATCTTTGGGGACATTGAACGA
 GTCATCATGCCTGGGGTGGTTCCTGCGCAGAGCCCCACATGCACGCCTACTATCCTGCTTTACCTCAT
 GGCCATCCCTGCTAGGAGACATGCTGGCCGATGCCATTAAGTCTTAGGATTCACGTGGGCATCTAGCCC
 AGCTTGCACAGAGCTGGAGATGAACATCATGGACTGGCTGGCGAAGATGCTGGGGCTCCCGGAGTACTTC
 CTGCACCACCATCCAGCAGCCGAGGGGAGGTGTCTTACAGAGCACTGTGAGCGAATCCACTTTAATTG
 CCCTGCTGGCAGCAAGAAAGAACAAAATCCTAGCAATGAAAGCATGCGAGCCCGATGCTAATGAGTCCCT
 CCTGAACGCTCGGCTCGTTGCCTACACCTGATCAGGCTCACTTTCAGTGGAGAAGGCTGGCTTGATT
 TCCTTGTGAAGATCAGATTTCTACCTGTGGACGACAACCTTCTACTCCGAGGAGAAGCTCTCCAGAAAG
 CTATTGAGGAAGACAAGCAACAGGGCTTGGTGCCTGTGTTTGTCTGTGCAACGTTAGGGACTACTGGAGT
 CTGTGCATTTGACAGGCTGTGAGAACTGGGGCCCATCTGTGCCAGTGAGGGACTGTGGCTCCACGTCGAT
 GCTGCTTATGCAGGCACGGCCTTTCTGTGCCCTGAGCTCCGGGGTTCCTGGAGGGCATCGAGTACGCTG
 ACTCCTTACCTTTAACCTTCCAAGTGGATGATGGTACACTTTGACTGTACTGGATTCTGGGTCAAGGA
 CAAGTACAAGCTGCAGCAGACCTTTAGTGTGAACCCATCTACCTCCGACATGCCAATCTGGTGCAGCC
 ACGGACTTCATGCATTGGCAGATCCCCTTGAGCCGGCGCTTTCGCTCCATTAAGCTGTGGTTTGTGATTC
 GGTCTTCGGGGTGAAGAATCTCAAGCACATGTCAGACACGGCACAGAAATGGCTAAATACTTTGAATC
 TCTGGTCAGAAGCGACCTTCTTCGAAATTCCTGCTAAGAGGCACCTTGGTTTGGTGGTTTTCCGCTCTG
 AAGGGTCTAATTGTCTCACAGAAAGTGTGTTAAAGGAAATAGCCAAAGCTGGCCAGCTCTTTCTCATCC
 CGGCTACTATCCAAGACAAGCTGATCATCCGTTTCACTGTGACATCCCAGTTTACCACCAAGGAGGACAT
 CCTGAGAGATTGGCACCTCATCCAAGAGGCTGCTAACCTTGTCTGAGCCAGCACTGCACTTCCAGCCG
 AGCCCTCGGGCCAAGAAGCTCATCCCGCCACCGCCAGGGACCAGAGGGCTATCCCTGGAGTCAGTCAGCG
 AGGGAGGAGATGACCCAGCACAGGCCCGGAAGATCATCAAGCAGCCAGGAGCCAGTCTGGCGAGAAGGGA
 AGGCGGCTCTGATCTGGAACGATGCCGGATCCCTTTGATGATTGCTTCTCGGAAGAGGCCCCCAACACC
 ACCAAGCACAAGCTGTGTCCTTTCTGTTCAGTTACTTGTCCGTCCAGAACAGGAGGAAGACAACCGGT
 CCCTCAGCTGCAACAGTGTGCCTATGAGTGCCAGAAAGTCACTCCCGCAGACGCTTCACTGAAGAATGG
 GGGCTCCTTCGGGCCAGAATCTTTCCGGGTTCCAGAACAAATGATGATGATGAAGAAAGGTGCCTTC
 AAAAAGCTGATCAAGTTCTACAGCGTCCCAGCTTTCCTGAATGCAGTTCTCAGTGTGCTCGCCAGCTAC
 CTGCTGCCCCCTGGAGGCCATGGTG

ACGCGTACGCGGGCCGCTCGAG – GFP Tag – GTTTAA

Protein Sequence: >MG209853 representing NM_008230
 Red=Cloning site Green=Tags(s)

MMEPCEYREYREYYRARGKEMVDYISQYLSTVRERQVTPNVQPGYLRAQLPASAPEEPDSDSIFGDIER
 VIMPGVVHWQSPHMHAYPALTSWPSLLGDMLADAINCLGFTWASSPACTELEMNIMDWLAKMLGLPEYF
 LHHHPSSRGGGVLQSTVSESTLIALLAARKNKILAMKACEPDANESSLNARLVAYTSDQAHSSVEKAGLI
 SLVKIRFLPVDDNFSLRGEALQKAIEEDKQQGLVPVFVCAATLGTGVCADFRLSELGPICASEGLWLHVD
 AAYAGTAFLCPELRFLEIEYADSFTFNPSKWMMVHFDCTGFVWKDKYKLQQTFSVNPIYLRHANS
 TDFMHWQIPLSRRFRSIKLWVFIKRSFGVKNLQAHVRHGTEMAKYFESLVRSDPSFEIPAKRHLGLV
 VFRLLKGNPLTESVLKEIAKAGQLFLIPATIQDKLIIRFTVTSQFTTKEDILRDWHLIQEAAANLVL
 SQHCTSQPSPRAKNVIPPPTGTRGLSLESVSEGGDDPAQARKIIKQPGASLARREGGSDLETMPDFD
 DCFSEEPNTTKHKLSSFVSYLSVQNRRTTRSLSCNSVPMSAQKSLPADASLKNNGSFRARIFSGF
 PEQMMMMKKGAFKKLIKFYVSPSFPECCSSQCARQLPCCPLEAMV

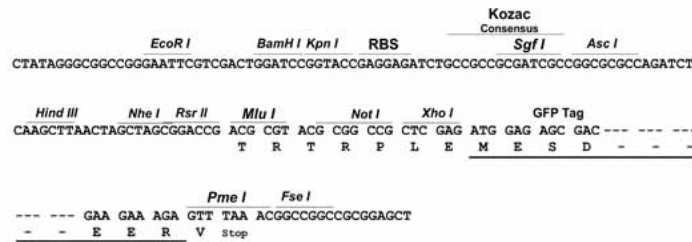
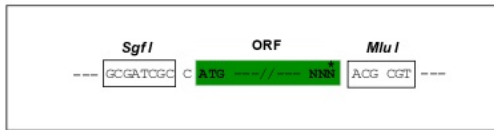
TRTRPLE - GFP Tag - V

Chromatograms: https://cdn.origene.com/chromatograms/ja2659_b08.zip

Restriction Sites: Sgfl-Mlul

Cloning Scheme:

Cloning sites used for ORF Shuttling:



ACCN: NM_008230

ORF Size: 1986 bp

OTI Disclaimer: Due to the inherent nature of this plasmid, standard methods to replicate additional amounts of DNA in E. coli are highly likely to result in mutations and/or rearrangements. Therefore, OriGene does not guarantee the capability to replicate this plasmid DNA. Additional amounts of DNA can be purchased from OriGene with batch-specific, full-sequence verification at a reduced cost. Please contact our customer care team at custsupport@origene.com or by calling 301.340.3188 option 3 for pricing and delivery.

The molecular sequence of this clone aligns with the gene accession number as a point of reference only. However, individual transcript sequences of the same gene can differ through naturally occurring variations (e.g. polymorphisms), each with its own valid existence. This clone is substantially in agreement with the reference, but a complete review of all prevailing variants is recommended prior to use. [More info](#)

OTI Annotation: This clone was engineered to express the complete ORF with an expression tag. Expression varies depending on the nature of the gene.

Components: The ORF clone is ion-exchange column purified and shipped in a 2D barcoded Matrix tube containing 10ug of transfection-ready, dried plasmid DNA (reconstitute with 100 ul of water).

Reconstitution Method:

1. Centrifuge at 5,000xg for 5min.
2. Carefully open the tube and add 100ul of sterile water to dissolve the DNA.
3. Close the tube and incubate for 10 minutes at room temperature.
4. Briefly vortex the tube and then do a quick spin (less than 5000xg) to concentrate the liquid at the bottom.
5. Store the suspended plasmid at -20°C. The DNA is stable for at least one year from date of shipping when stored at -20°C.

RefSeq: [NM_008230.6](#), [NP_032256.3](#)

RefSeq Size: 2378 bp

RefSeq ORF: 1989 bp

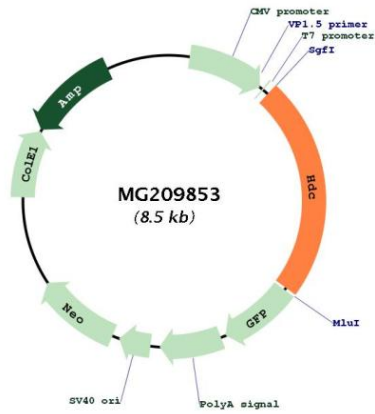
Locus ID: 15186

UniProt ID: [P23738](#)

Cytogenetics: 2 61.76 cM

Gene Summary: Catalyzes the biosynthesis of histamine from histidine.[UniProtKB/Swiss-Prot Function]

Product images:



Circular map for MG209853