

Product datasheet for **MG209851**

Wdr48 (BC048155) Mouse Tagged ORF Clone

Product data:

Product Type:	Expression Plasmids
Product Name:	Wdr48 (BC048155) Mouse Tagged ORF Clone
Tag:	TurboGFP
Symbol:	Wdr48
Synonyms:	8430408H12Rik; mKIAA1449; Uaf1
Mammalian Cell Selection:	Neomycin
Vector:	pCMV6-AC-GFP (PS100010)
E. coli Selection:	Ampicillin (100 ug/mL)



[View online »](#)

ORF Nucleotide
Sequence:

>MG209851 representing BC048155
Red=Cloning site Blue=ORF Green=Tags(s)

TTTTGTAATACGACTCACTATAGGGCGGCCGGGAATTCGTCGACTGGATCCGGTACCGAGGAGATCTGCC
GCCGCGATCGCC

ATGGCGGCCCATCACCGCAGAACACAGCCGGCGGAGGAAAGTGCAGGTTTCTTATGTAATTCGAGATG
AAGTGGAGAAATACAATCGGAATGGAGTCAATGCCCTGCAACTGGACCCAGCACTCAACAGACTCTTCAC
AGCAGGTCGAGACTCCATCATAAGAATATGGAGTGTCAATCAGCACAAGCAAGATCCGTACATAGCATCT
ATGGAGCACCATACAGACTGGGTAATGATGTCGTGCTCTGTTGCAATGGGAAAACGCTAATTTCTGCTT
CTTCAGACACAACAGTCAAAGTCTGGAATGCACATAAAGGGTTCTGCATGTCCACACTCAGGACGCATAA
GGACTATGTAAGGCCTTAGCGTACGCCAAGGATAAAGAGCTGGTAGCGTCAGCTGGGCTGGACAGACAG
ATATTCCTTTGGGATGTGAACACTCTGACGGCACTGACTGCCTCAAACAACACCGTTACAACCTTCTTCTT
TAAGTGGGAACAAAGACTCCATTTATAGCCTGGCCATGAACCAACTGGGAACAATCATTGTATCAGGGTC
CACTGAGAAGGTTCTGAGAGTGTGGGATCCAAGAACCTGCGCGAAACTCATGAAGCTGAAAGGACATACG
GACAATGTGAAGGCCTTGTCTGCTGCACAGGGACGGCACACAGTGCCTCTCTGGGAGTTCTGACGGGACCA
TTCGCCTGTGGTCCCTTGGCCAGCAGAGATGTATAGCAACATACCGAGTCCATGATGAAGGTGTTTGGGC
CCTACAGGTCAACGATGCCTTTACACATGTATATTCTGGAGGACGAGACAGGAAAATCTACTGCACAGAC
CTAAGGAACCTGACATTCGGGTACTGATTTGTGAAGAAAAAGCACCAGTTCTCAAGATGGAACCTTGACA
GATCAGCAGATCCCCCTCTGCAATCTGGGTGCAACAACAAAGTCCACAGTAAATAAGTGGACACTGAA
GGGAATTCATAATTTTCGAGCCTCTGGTGATTATGACAATGATTGTACAAACCCATAACGCCCTCTGC
ACACAGCCCGACCAAGTTATTAAGGGGGCGCTAGTATTATTAGTCCACATCCTAAATGACAAGCGAC
ACATATTAACCAAAGATACGAATAACAATGTGGCGTACTGGGATGTATTGAAGGCATGCAAGTGAAGA
TTTGGGCAAAGTGGACTTTGAAGATGAAATTAAGAAAAGATTTAAAATGATGCTGACCATTACCCTGGAT
GAGAGTACTGCTTCGCTGCCTGGGTTTCTGCGAAAGATGCTGGCTTTAGCAGTCTGATGGGTCAGACC
CAAACTGAACCTTAGGAGGACTTCTACTACAGGCACTGCTGGAATACTGGCCAGGACACATGTGACTCC
CATGGATGAAGAAGAGAATGAAGTGAACCATGTGAGTGGGGGACAGGAGACAGAGTCCAGAAGGGAAAT
GGTATTTCCAAGTGCCCCACACACCCCGGTGATCTTTGGAGAAGCTGGAGGTCGCACACTATTCAGGC
TGCTCTGCCGGGACTCCGGGGTGAGACTGAGGCGATGCTTCTCAATGAGACGGTGCCACAATGGGTGAT
TGACATCACTGTGGATAAAAATATGCCAAATTAACAAAATTCCTTTCTACCTCAACCTCATGCATCT
TCAGGAGCAAAAACCTTTAAAAAAGACAGGCTGTCTGCCAGTGCATGCTGCAGGTCGGGAAGGTGATGG
AGCACGTCTACGAGAAGATTATCAACCTGGACAATGAGTCCCAAACCACAGCTCTTCTAATAATGAAAA
GCCAGAGCAGGAGAAGGAGGAGGACATCGCGGTATTGGCAGAGGAGAAAATTGAACCTTCTGTGCCAGGAC
CAGGTTTTGGACCAAATATGGACCTTCGGACAGTAAAGCACTTCATATGGAAGAGTGGTGGGGACCTCA
CCCTCCATTACCGTCAGAAGTCCAG

ACGCGTACGCGGCCGCTCGAG - GFP Tag - GTTTAA

Protein Sequence: >MG209851 representing BC048155
 Red=Cloning site Green=Tags(s)

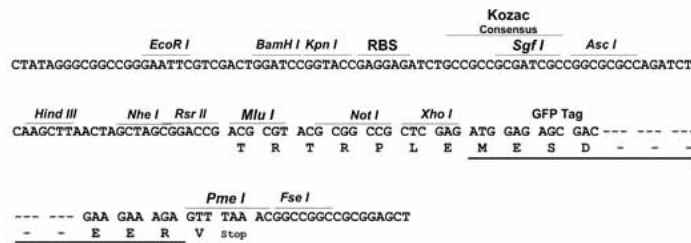
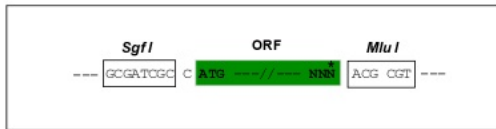
MAAHRQNTAGRKRVQVSIVIRDEVEKYNRNGVNALQLDPALNRLFTAGRDSIIRIWSVNQHKQDPYIAS
 MEHHTDWNVDVLLCCNGKTLISASSDTTVKVWNAHKGFCMSTLRTHKDYKALAYAKDKELVASAGLDRQ
 IFLWDVNTLTAL TASNNTVTTSSL SGNKDSIYSLAMNQLGTIIIVSGSTKVLRVWDPRTCAKLMKLGHT
 DNVKALLLRDGTQCLSGSSDGTIRLWSL GQQRCIATYRVHDEGVWALQVNDAFTHVYSGGRDRKIYCTD
 LRNPDIRVLICEEKAPVLKME LDRSADPPP AIWVATTKSTV NKWTLKGIHNF RASGDYDNDCTNPITPLC
 TQPDQVIKGGASIIQCHILNDRHILTKDTN NN VAYWDV LKACKVEDLGKVFDEI KKRFRKMMLTITLD
 ESDCFAAWVSAKDAGFSSPDGSDPKLNLG LLLQALLEYWP RTHVTPMDEEENEVNHVSGGQESRVQKGN
 GYFQVPPHTPVIFGEAGGRTLFRLLCRDQSGGETEAMLLNETVPQWVIDITVDKNMPKFNKIPFYLQPHAS
 SGAKTLKKDRLSASDMLQVRKVMHVYEKIINLDNESQTTSSSNNEKPEQEKEEDI AVLAEKIELLCQD
 QVLDPNMDLRTVKHF IWKSGGDL TLHYRQKST

TRTRPLE - GFP Tag - V

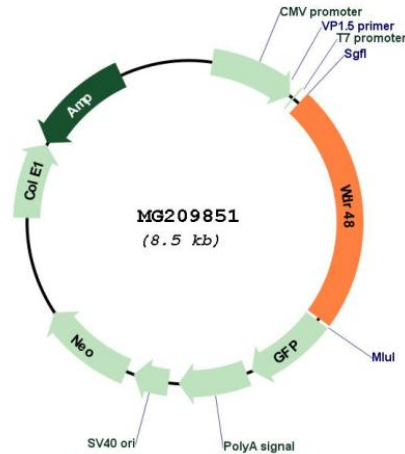
Restriction Sites: SgfI-MluI

Cloning Scheme:

Cloning sites used for ORF Shuttling:



Plasmid Map:



ACCN: BC048155

ORF Size: 1988 bp

OTI Disclaimer: The molecular sequence of this clone aligns with the gene accession number as a point of reference only. However, individual transcript sequences of the same gene can differ through naturally occurring variations (e.g. polymorphisms), each with its own valid existence. This clone is substantially in agreement with the reference, but a complete review of all prevailing variants is recommended prior to use. [More info](#)

OTI Annotation: This clone was engineered to express the complete ORF with an expression tag. Expression varies depending on the nature of the gene.

Components: The ORF clone is ion-exchange column purified and shipped in a 2D barcoded Matrix tube containing 10ug of transfection-ready, dried plasmid DNA (reconstitute with 100 ul of water).

Reconstitution Method:

1. Centrifuge at 5,000xg for 5min.
2. Carefully open the tube and add 100ul of sterile water to dissolve the DNA.
3. Close the tube and incubate for 10 minutes at room temperature.
4. Briefly vortex the tube and then do a quick spin (less than 5000xg) to concentrate the liquid at the bottom.
5. Store the suspended plasmid at -20°C. The DNA is stable for at least one year from date of shipping when stored at -20°C.

RefSeq: [BC048155](#), [AAH48155](#)

RefSeq Size: 3799 bp

RefSeq ORF: 1988 bp

Locus ID: 67561

Cytogenetics: 9 F4

Gene Summary: Regulator of deubiquitinating complexes. Acts as a strong activator of USP1 and USP46. Enhances the USP1-mediated deubiquitination of FANCD2; USP1 being almost inactive by itself. Also activates deubiquitinating activity of complexes containing USP12. Activates deubiquitination by increasing the catalytic turnover without increasing the affinity of deubiquitinating enzymes for the substrate.[UniProtKB/Swiss-Prot Function]