

## Product datasheet for **MG209849**

### **Acox1 (NM\_015729) Mouse Tagged ORF Clone**

#### **Product data:**

Product Type:	Expression Plasmids
Product Name:	Acox1 (NM_015729) Mouse Tagged ORF Clone
Tag:	TurboGFP
Symbol:	Acox1
Synonyms:	A; Acox; AOX; D130055E20Rik; Paox
Mammalian Cell Selection:	Neomycin
Vector:	pCMV6-AC-GFP (PS100010)
E. coli Selection:	Ampicillin (100 ug/mL)



[View online »](#)

ORF Nucleotide  
Sequence:

>MG209849 representing NM\_015729  
Red=Cloning site Blue=ORF Green=Tags(s)

TTTTGTAATACGACTCACTATAGGGCGGCCGGGAATTCGTCGACTGGATCCGGTACCGAGGAGATCTGCC  
GCCGCGATCGCC

ATGAATCCCGATCTGCGCAAGGAGCGGGCCGCCACCTTCAATCCAGAGTTAATCACGCACATCTTGG  
ATGGTAGTCCGGAGAACACCCGGCGCCGTCGAGAAATCGAGAACTTGATTCTGAACGATCCAGACTTCCA  
ACATGAGGACTATAAATTCTCACTCGAAGCCAGCGTTACGAGGTGGCTGTTAAGAAGAGTGCCACCATG  
GTGAAGAAGATGAGGGAATTTGGCATCGCAGACCCTGAAGAAATCATGTGGTTTAAAACTCTGTGCACC  
GAGGGCATCTGAGCCTTTGGACCTTCACTTGGGCATGTTCTGCCACCTTGCTTACCAGGCCACCGA  
AGAGCAGCAGGAGCGTTTCTTCATGCCGGCCTGGAATCTGGAGATCACGGGCACTTATGCGCAGACAGAG  
ATGGGTGATGGAACCTCATCTTCGAGGCTTGAAACCCTGCCACATATGACCCCAAGACCAAGAGTTCA  
TTCTCAACAGCCCAACTGTGACTTCCATCAAGTGGTGGCCTGGGGGCTTGGGAAGACTTCAATCATGC  
GATAGTCTGGCTCAGCTCATCACTCGAGGGGAGTGTACGGGTTACATGCCTTTGTTGCCCTATCCGT  
GAGATTGGGACCCACAAGCCTCTGCCAGGCATCACTGTTGGGGATATCGGCCCAAGTTTGGTTATGAAG  
AGATGGATAATGGCTACCTGAAGATGGACAATTACCGTATTCTAGAGAGAATGTTGATGAAATATGC  
CCAGGTGAAGCCTGACGGCACGTATGTAACCTCTGAGTAAACAAGCTGACATATGGGACCATGGTTTTT  
GTAAGGTCCTTCTCGTGGGAAGTGCAGCTCAGAGTCTGTCCAAGGCATGCACATTGCCATTCGATACA  
GTGCTGTGAGGCGCCAGTCTGAAATCAAGAGAAGCGAGCCAGAGCCCAAGATTTTGGATTTTTCAGACGCA  
GCAGTATAAACTTCCCGCTCTGGCCACCGCTATGCCTTCCACTTCTCGGAAGATACATAAAGGAG  
ACCTACATGCGGATTAATGAGAGCATTGGCCAAGGCGACCTGAGTGAGCTGCCTGAGCTTCATGCCCTCA  
CAGCTGGGCTGAAGGCTTTTACTACCTGGACAGCCAATGCTGGTATCGAAGAATGTCGGATGGCTTGGCG  
TGGGCACGGCTATTCTCACAGCAGTGGGATTCCAAATATTTACGTCACGTTTACCCCGCCCTGCACCTTC  
GAGGGGAGAACTGTTATGATGCTGCAGACGGCCAGGTTCTTGATGAAAATCTATGACCAGGTTCACT  
CGGGGAAGCTGGTGGTGGTATGGTGTGCTACTTGAATGACCTGCCGAGCCAGCGTATCCAGCCGACGCA  
GGTGGCAGTCTGGCCAACCTGTTGGACATTAACAGCCTGGACAGCCTGACAGAAGCCTACAAGCTACGT  
GCAGCCAGATTGGTAGAAATGCTGCAAAAAACCTTCAGGCCAAGTGAGTACAGGAAGAGCAAGGAAG  
TGGCGTGAACCTGACTTCTGTCGACCTTGTTCGCGCAAGTGAGGCGCACTGCCACTACGTGACCCTTAA  
GGTCTTTGCAGATAAACTCCCAAGATTCAAGACAGAGCCGTGCAAGCCGTGCTGAGGAACCTGTGTCTC  
TTATATCTCTCTATGGGATCAGCCAGAAAGGAGGGGATTTTCTTGGGGGAACATCATCACAGGGGCTC  
AGATGTCACAGGTAACAGTCCGATCCTGGAGCTGCTCACAGTACTCGCCCAACGCTGTGGCTTTGGT  
GGATGCCTTTGACTTTAAGGATGTGACCTTGGCTCTGTTCTCGGCCGCTATGATGGCAATGTGTATGAA  
AACTTGTTTGAGTGGCCAAGAAGTCCCACTGAACAAGACAGAGGTCCACGAATCTTACTACAAGCACT  
TGAAGCCCTGCAGTCGAAGCTT

ACGCGTACGCGGCCGCTCGAG - GFP Tag - GTTTAA

**Protein Sequence:** >MG209849 representing NM\_015729  
 Red=Cloning site Green=Tags(s)

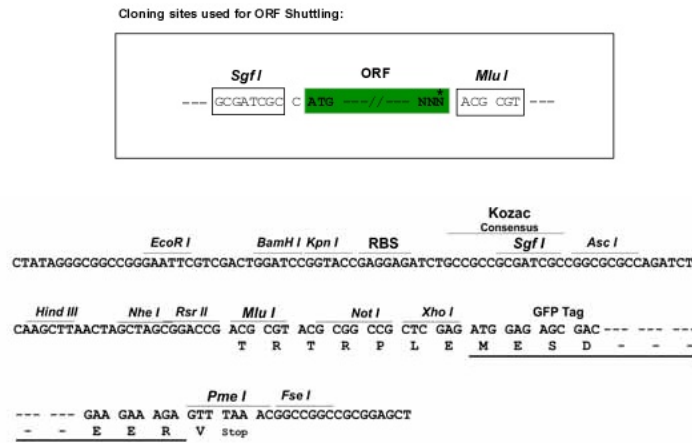
MNPDLRKERAAATFNPELITHILDGSPENTRRRREIENLILNDPDFQHEDYNFLTRSQRVEVAVKKSATM  
 VKKMFREFGIADPEEIMWFKNSVHRGHPEPLDLHLGMFLPTLLHQATEEQQERFFMPAWNLEITGTYAQTE  
 MGHGTHLRLETTATYDPKTQEFILNSPTVTSIKWPGGLGKTSNHAIVLAQLITRGECYGLHAFVVP  
 EIGTHKPLPGITVGDIGPKFGYEEMDNGYLKMDNYRIPRENMLMKYAQVKPDGTYYKPLSNKLT  
 TYMRINESIGQGDLSPELHALTAGLKAFTTWTANAGIEECRMACGGHGYSHSSGIPNIYVTF  
 PACTFEGENTVMMLQATARFLMKIYDQVQSGKLVGGMVSYLNDLPSQRIQPQVAVWPTLVDINSLDSL  
 TEAYKLR AARLVEIAAKNLQAQVSHRKSKEVAVNLT SVDLVRASEAHCHYVTVKVFADKLPKIQDRAV  
 QAVLRNLCL LYSLYGISQKGGDFLEGNIITGAQMSQVNSRILELLTVTRPNAVALVDAFDFKDV  
 TLGSVLGRYDGNVYENLFEWAKKSPLNKTEVHESYYKHLKPLQSKL

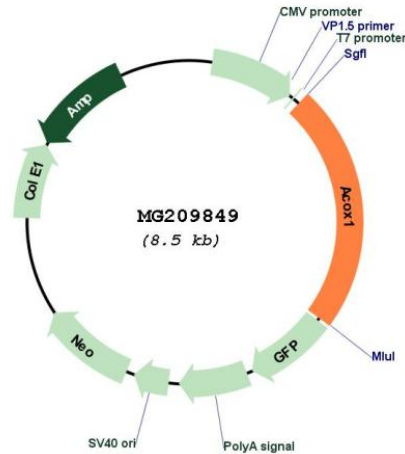
TRTRPLE - GFP Tag - V

**Restriction Sites:**

Sgfl-MluI

**Cloning Scheme:**



**Plasmid Map:**


**ACCN:** NM\_015729

**ORF Size:** 1983 bp

**OTI Disclaimer:** Due to the inherent nature of this plasmid, standard methods to replicate additional amounts of DNA in E. coli are highly likely to result in mutations and/or rearrangements. Therefore, OriGene does not guarantee the capability to replicate this plasmid DNA. Additional amounts of DNA can be purchased from OriGene with batch-specific, full-sequence verification at a reduced cost. Please contact our customer care team at [custsupport@origene.com](mailto:custsupport@origene.com) or by calling 301.340.3188 option 3 for pricing and delivery.

The molecular sequence of this clone aligns with the gene accession number as a point of reference only. However, individual transcript sequences of the same gene can differ through naturally occurring variations (e.g. polymorphisms), each with its own valid existence. This clone is substantially in agreement with the reference, but a complete review of all prevailing variants is recommended prior to use. [More info](#)

**OTI Annotation:** This clone was engineered to express the complete ORF with an expression tag. Expression varies depending on the nature of the gene.

**Components:** The ORF clone is ion-exchange column purified and shipped in a 2D barcoded Matrix tube containing 10ug of transfection-ready, dried plasmid DNA (reconstitute with 100 ul of water).

**Reconstitution Method:**

1. Centrifuge at 5,000xg for 5min.
2. Carefully open the tube and add 100ul of sterile water to dissolve the DNA.
3. Close the tube and incubate for 10 minutes at room temperature.
4. Briefly vortex the tube and then do a quick spin (less than 5000xg) to concentrate the liquid at the bottom.
5. Store the suspended plasmid at -20°C. The DNA is stable for at least one year from date of shipping when stored at -20°C.

**RefSeq:** [NM\\_015729.3](#), [NP\\_056544.2](#)

**RefSeq Size:** 3992 bp

**RefSeq ORF:** 1986 bp

**Locus ID:** 11430

**UniProt ID:** [Q9R0H0](#)

**Cytogenetics:** 11 E2

**Gene Summary:** This gene encodes a member of the acyl-coenzyme A oxidase family. The encoded protein is localized to peroxisomes and is the first enzyme of the fatty acid beta-oxidation pathway, which catalyzes the desaturation of acyl-coenzyme A to 2-trans-enoyl-coenzyme A. Disruption of this gene results in microvesicular steatohepatitis, spontaneous peroxisome proliferation, and the eventual development of hepatocellular carcinomas. Alternative splicing results in multiple transcript variants. [provided by RefSeq, Dec 2012]