

Product datasheet for **MG209844**

Nfe2l3 (NM_010903) Mouse Tagged ORF Clone

Product data:

Product Type:	Expression Plasmids
Product Name:	Nfe2l3 (NM_010903) Mouse Tagged ORF Clone
Tag:	TurboGFP
Symbol:	Nfe2l3
Synonyms:	Nrf3
Mammalian Cell Selection:	Neomycin
Vector:	pCMV6-AC-GFP (PS100010)
E. coli Selection:	Ampicillin (100 ug/mL)



[View online »](#)

ORF Nucleotide Sequence:

>MG209844 representing NM_010903
 Red=Cloning site Blue=ORF Green=Tags(s)

TTTTGTAATACGACTCACTATAGGGCGGCCGGGAATTCGTCGACTGGATCCGGTACCGAGGAGATCTGCC
 GCC**CGGATCGCC**

ATGAAGCTCCCGAAGCCTTGGTGGGCGGGCGGCCCTCTGCAACTCACGATTCTGTTGAGCTTGGTAG
 GGCTCCGTGTGGACCTGGACCTTCTCTGCCGCCGCCGGCCGCCCACTTTGGGAAGAGCTGCTCCCACT
 CTGCCCCACCCGCCCGCCTCGGCTTCTAACCCCTTCTCGGCTTCGGAAGGCTGGGAACGCACCCCCCTG
 CTACCTGCCAAAGGCCGGCTGCTGCACGAAGTGCAGCGCTCGGGTCCCCTTATTCCCCGCACCCCGC
 TGGACGCTGGCTAGTGCACAGCGTGGCGACTGGGAACGCAGACGGGGCCACGGGCTGCTCGGCACCGC
 CGCCTCGTCGGCCGTGGGAGACGGCGCCAGTCAGCATCCGCGGGCGGGGACCCCCGAGCGGCTCAT
 AGCAGCCCTCTGGCCGTGAGGAAGAGGAGGAGAAGGCCGCCGAACCGACGGCGCAGGTGCCAGATGCAG
 GCGGATGCGGGAGCCAGGAGAACGGGATGCTAAGAGAAAAGAGCGAAGCTGTGGATCACAGTTCCCAGCA
 GGAGAAAACGAGGAAGGGGTGTCAGCCAGGCAAAATCGCGACAGCAGAGTAAGACGGAGGAACACAAA
 ATGGCGTGTGCCTCTGCCAGGGAAGCCGAGAAGATCACCGAGGCTAGGAACGAGAGCCATCTACATTGGT
 CAGATACATCTTTCTCTTTGGAAGATTTATTCCAACACTTTTCATCACAGCCTGAACATTCTCTGGAGGG
 CATCTCAGTGGAAAGCATTCCACCTTTTCTGAGCAGTGTCTGTGAAAGTGTAAATTCCTCAGCACAGAAC
 ATAAATTTGAGCCAAGCTATAAGCCATGATGTCAATCTTCATGAAGCCATGCTGTTGTACCCCAACAACA
 CATTTAGAAGAGATCCATCAGCAAGGTCTTCACAGGCACAAGAACCATTTCTGCAGTTAAATCCTCATA
 AAATCTGAGCAAGCCACTCTGCAATGTCTCTCCACCGTTTGACAATCAAATGAGGAACCTAACAAAGC
 CAAGATCTCCTGTATGACCTGGATTCAAATATATTTGATGGAATAAACCTAATGTCATTGGCCACAGGTT
 TCAGTCCATTGGAAGTTTCTCAACTTTTTGAAGAACCAGATTCCGGGCTCTCATTAAATTCAAGTTACAA
 CAGCACCTCTCTACAAATTCTTACCGTATTTATGATGGGACTGTAGGTTACAATAGCGACCTACAGTCT
 CTTTGTATGATTTAGGTGCTGTAGGAGGCTGCTACCCAGAACCATAAACATTGTCATATGGACCATA
 GGACTATAGTGGCTTTCATGTGTCCCTTGAATGTGAGCAAGTATTTTCATGACCACACTTACCATTTACA
 GTCAGGTGCATCAGAGCCACATCTGAATCTTTTGCATGGTCTGAGAAGTCGAGAAAACAGTGGATGC
 CTTGATAACCCAGATAGAACTTGAGCCGTGATGAACAGCGTGTAAAGCTCTGCACATTCCTTTTCTG
 TAGATGAAATTGCCGTATGCCTGTTGACTCTTCAACAGCATGTTAAGCAGATACTACCTGACAGACTT
 ACAAGTGTCTCTCATCCGTGATATCAGGCGAAGAGGAAAAATAAAGTTGCTGCTCAGAAGTCCCGTAAA
 CGTAAACTAGACATCATTTTGAATCTAGAGGATGATATATGTAAGTTCGAAGCAAAGAAAGGCCCTTA
 AAAATGAGCAAACCTCAATGTAGCAAAGCTATTGACATAATGAGGCGAAGCTACATGGCCTTCACAGGA
 TGTTTTTAATAGATTAAGAGATGACCAAGGTAGGCCAGTCAATCCAAGCCAATATGCACTTCAGTACAGC
 CATGATGGAAGTGTGTTGATTGTACCCAAAGAACTCATCTCATCAGGCCACAAAAGGAAGCCCAAAGG
 GAAAGAGAGAGAGAAGAAAC

AG**CGGACCG**ACGCGTACGCGGCCGCTCGAG - GFP Tag - GTTTAA

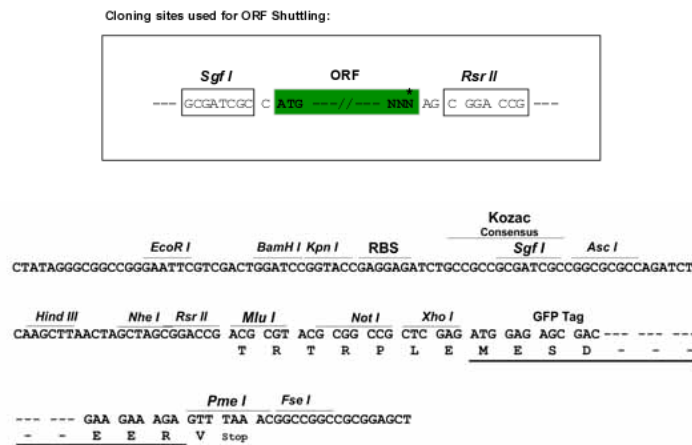
Protein Sequence: >MG209844 representing NM_010903
 Red=Cloning site Green=Tags(s)

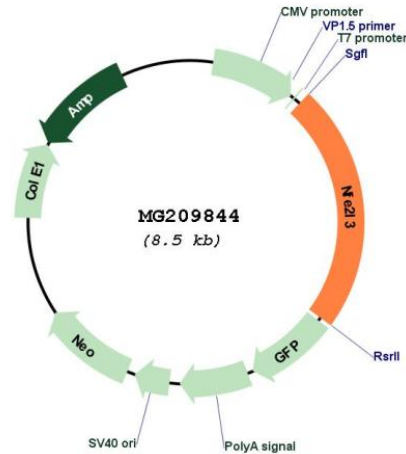
MKLPKPWWAGGGLLQLTILLSLVGLRVDLDFLPPPAALWEELLPLCPTRPASASNPFSASEGWERTPL
 LPAKGRLLHEVRALGVFFIPRTRVDAWL VHSVATGNADGAHLLGTAASSAVDGGQASAGGGDPRAAH
 SSPLAEEEEEEKAAEPTAQVPDAGGCGSQENGLREKSEAVDHSSQQEENEEGVSAQAKSRQQSKTEEHK
 MACASAREAEKITEARNESHLSHSDTSFSLEDLFLQLSSQPEHSLEGISVEDIPPFLSSVCEVNSSAQN
 INLSQAI SHDVNLHEAMLLYPNNTFRRDPSARSSQAQEPFLQLNPHTNPEQATPAMSLPPFDNQMRNLTS
 QDLLYDLDSNIFDGINLSLATGFSPLVSQLFEEDSGLSLNSSYNSTSLTNSYRIYDGTGVGYNSDLQS
 LCHDLGAVGGCYPEPHKHCHMDHRTIAGFHVSLCQQVFHDHTYHLQSGASEPTSESAWSEKSKTSGC
 LDNPDRNLSRDEQRKALHIPPFSVDEIVRMPVDSFNMSLSRYL TDLQVSLIRDIRRRGNKVAQNCRK
 RKLDIILNLEDDICNLQAKKEALKNEQTQCSKAIDIMRQKLHGLHQDVFNRRLRDDQGRPVNPSQYALQYS
 HDGTVLIVPKELISSGHKKEAPKGRERRN

SGPTRRRLE - GFP Tag - V

Restriction Sites: SgfI-RsrII

Cloning Scheme:



Plasmid Map:


ACCN: NM_010903

ORF Size: 1980 bp

OTI Disclaimer: The molecular sequence of this clone aligns with the gene accession number as a point of reference only. However, individual transcript sequences of the same gene can differ through naturally occurring variations (e.g. polymorphisms), each with its own valid existence. This clone is substantially in agreement with the reference, but a complete review of all prevailing variants is recommended prior to use. [More info](#)

OTI Annotation: This clone was engineered to express the complete ORF with an expression tag. Expression varies depending on the nature of the gene.

Components: The ORF clone is ion-exchange column purified and shipped in a 2D barcoded Matrix tube containing 10ug of transfection-ready, dried plasmid DNA (reconstitute with 100 ul of water).

Reconstitution Method:

1. Centrifuge at 5,000xg for 5min.
2. Carefully open the tube and add 100ul of sterile water to dissolve the DNA.
3. Close the tube and incubate for 10 minutes at room temperature.
4. Briefly vortex the tube and then do a quick spin (less than 5000xg) to concentrate the liquid at the bottom.
5. Store the suspended plasmid at -20°C. The DNA is stable for at least one year from date of shipping when stored at -20°C.

RefSeq: [NM_010903.2](#)

RefSeq Size: 2544 bp
RefSeq ORF: 1983 bp
Locus ID: 18025
UniProt ID: [Q9WTM4](#)
Cytogenetics: 6 24.84 cM
Gene Summary: Activates erythroid-specific, globin gene expression.[UniProtKB/Swiss-Prot Function]