

Product datasheet for **MG209842**

Pomgnt1 (NM_026651) Mouse Tagged ORF Clone

Product data:

Product Type:	Expression Plasmids
Product Name:	Pomgnt1 (NM_026651) Mouse Tagged ORF Clone
Tag:	TurboGFP
Symbol:	Pomgnt1
Synonyms:	0610016I07Rik; 4930467B06Rik
Mammalian Cell Selection:	Neomycin
Vector:	pCMV6-AC-GFP (PS100010)
E. coli Selection:	Ampicillin (100 ug/mL)



[View online »](#)

ORF Nucleotide
Sequence:

>MG209842 representing NM_026651
Red=Cloning site Blue=ORF Green=Tags(s)

TTTTGTAATACGACTCACTATAGGGCGGCCGGGAATTCGTCGACTGGATCCGGTACCGAGGAGATCTGCC
GCCGCGATCGCC

ATGGATGACTGGAAGCCAGTCCCCTCATCAAGCCCTTTGGGGCTAGGAAGAAACGGAGCTGGTACCTTA
CCTGGAAGTATAAACTGACAAACCAGCGGCCCTGAGGAGATTCTGTGACACAGGGGCTGTGCTTTTCCT
GCTGGTACCCTCATTGTCAACATCAAGTTGATCCTGGACACTCGGAGAGCAATCAGCGAGGCCAATGAA
GACCCAGAACCAGAGCAAGACTATGATGAGGCCCTAGGACGTCTGGAGTCCCCTCGGCGCAGAGGCAGCA
GTCCCCGACGGGTGCTGGATGTGGAAGTAACTCCAGTAGAAGCAAAGTGTATGTGGCTGTGGATGGCAC
CACGGTGTCTGAGGATGAAGCCCGGAGCAGGGCCGAGGCATCCATGTCATAGTCTCAACCAGGCCACG
GGCCACGTGATGGCAAAGCGCGTGTGGACACATACTCTCCTCATGAGGATGAGGCCATGGTGTCTTCC
TCAACATGGTGGCCCCCGCCGCTGCTGATCTGCACGGTGAAGGATGAGGGTTCCTTCCACCTCAAGGA
CACAGCAAAGGCTCTGCTGAGGAGCCTGGGAAGTCAGGCAGGCCCTGCCCTTGGCTGGAGGGACACCTGG
GCCTTCGTGGGACGAAAAGGAGGTCTGTACTTGGCGAGAAACATTCTAAATCTCCTGCCCTCTCCTCCT
GGGGTGACCCAGTCTGTGAAGACAGATGTGCCACTGAGCTCAGCTGAAGAGGCTGAGTGTCACTGGGC
AGATACGGAGTTGAACCGCCGCCGACGGCGCTTCTGCAGCAAAGTGGAGGGCTACGGGAGCGTGTGCAGC
TGCAAGGACCCGACGCCTATTGAGTTACGCCCTGACCCACTTCCAGACAATAAGGTCCTCAATGTGCCTG
TGGCTGTCAATGCAGGGAACCGGCCAATTACCTGTACAGGATGCTGCGCTCTCTGCTCTCAGCCCAAGG
GGTATCTCCACAGATGATAACGGTCTTCATTGATGGCTACTATGAGGAGCCAATGGATGTGGTGGCGCTG
TTTGGTCTGAGAGGCATCCAGCATACTCCTATCAGCATCAAGAACGCCCGTGTGTCTCAGCACTACAAGG
CCAGCCTCACTGCCACTTCAACCTGTTCCGGAGGCCAAGTTTGTGTGTTCTGGAAGAGGACCTGGA
CATTGCCGTGGATTTTTTCAGTTTCTGAGCCAGTCCATCCACCTGCTGGAGGAAGATGACAGCCTGTAC
TGCATCTCTGCCTGGAATGACCAGGGTATGAACACACAGCTGAGGATCCAGCACTACTGTACCGTGTGG
AGACCATGCCTGGGCTAGGATGGGTGCTCAGGAAATCTTTATACAAGGAGGAGCTTGGAGCCCAAGTGGCC
CACACCAGAAAAGCTGTGGGATTGGGACATGTGGATGCGGATGCCGGAACAGCGCCGGGGCCGAGAGTGT
ATCATCCCGGATGTTCCCGATCCTACCACTTTGGCATCGTCGGCCTCAACATGAACGGCTACTTTCATG
AGGCCTACTTCAAGAAGCACAAGTTCAACACAGTTCAGGTGTCCAGCTCAGGAATGTAGACAGTCTGAA
GAAAGAAGCTTATGAAGTGGAAATTCACAGACTGCTCAGTGAAGCCGAGGTTTTGGACCACAGCAAGGAC
CCTTGTGAAGACTCCTTCTGCCAGACACGGAGGCCACACCTATGTGGCGTTTATCCGAATGGAGACAG
ATGATGACTTCGCCACCTGGACTCAGCTTGCCAAGTGCCTCCATATTTGGGACCTGGATGTTCTGTGGCAA
CCACCGGGGCTGTGGAGATTATTCGGAAGAAGAACCCTTTTTGGTGGTGGGGTCCCAGCCTCCCCT
TACTCAGTGAAGAAGCCACCATCAGTCACCCCTATTTCTGGAGCCACCCCAAGGAAGAAGGAGGCC
CAGGGGCTGTGAACAAACG

ACGCGTACGCGGCCGCTCGAG - GFP Tag - GTTTAA

Protein Sequence: >MG209842 representing NM_026651
 Red=Cloning site Green=Tags(s)

MDDWKPSPLIKPFGARKKRSWYLTWKYKLTNQRALRRFCQTGAVLFLLVTVIVNIKLILDTRRAISEANE
 DPEPEQDYDEALGRLESPRRRGSSPRRVLDEVEYSSRSKVVYVAVDGTTVLEDEAREQGRGIHVIVLNQAT
 GHVMAKRVFDTYSPHEDEAMVFLNMVAPGRVLICTVKDEGSFHLKDTAKALLRSLGSQAGPALGWRDWTW
 AFVGRKGGPVLGEKHSKSPALSSWGDVLLKTDVPLSSAEEAECHWADTELNRRRRRFCSKVEGYGSVCS
 CKDPTPIEFSPDPLPDNKVLNVPVAVIAGNRPNYL YRMLRSLLSAQGVSPQMITVFDGYYEPMDVVAL
 FGLRGIQHTPI SIKNARVSQHYKASLTATFNLFPEAKFAVLEEDLDIAVDFFSFLS QSIHLL EEDDSLY
 CISAWNDQGYEHTAEDPALLYRVETMPGLGWVLRKSLYKEELEPKWPTPEKLWDWDMWRRMPEQRRGREG
 IIPDVSRSYHFGIVGLNMNGYFHEAYFKKHKFNTVPGVQLRNVDL KKEAYEVEIHRLLSEAEVLDHSDK
 PCEDSFLPDTEGHTYVAFIRMETDDDFATWTQLAKCLHIWDL DVRGNHRGLWRLFRKKNHFLVVGVPASP
 YSVKKPPSVTPIFLEPPPKEEGAPGAAEQT

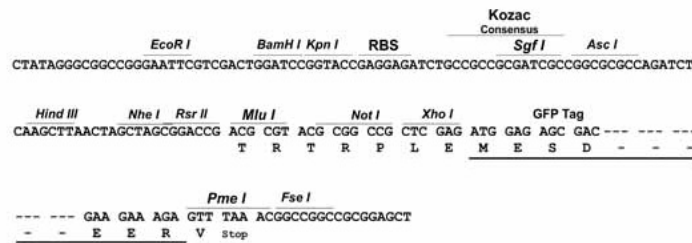
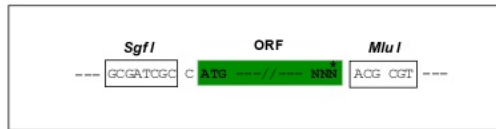
TRTRPLE - GFP Tag - V

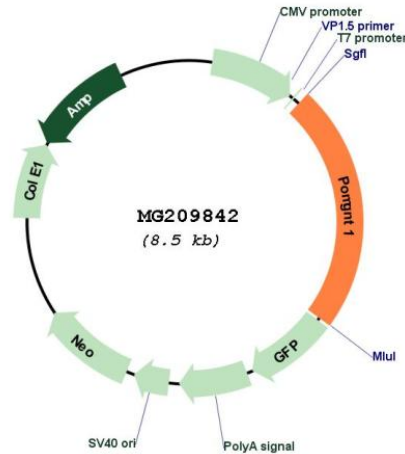
Restriction Sites:

Sgfl-MluI

Cloning Scheme:

Cloning sites used for ORF Shuttling:



Plasmid Map:


ACCN: NM_026651

ORF Size: 1980 bp

OTI Disclaimer: The molecular sequence of this clone aligns with the gene accession number as a point of reference only. However, individual transcript sequences of the same gene can differ through naturally occurring variations (e.g. polymorphisms), each with its own valid existence. This clone is substantially in agreement with the reference, but a complete review of all prevailing variants is recommended prior to use. [More info](#)

OTI Annotation: This clone was engineered to express the complete ORF with an expression tag. Expression varies depending on the nature of the gene.

Components: The ORF clone is ion-exchange column purified and shipped in a 2D barcoded Matrix tube containing 10ug of transfection-ready, dried plasmid DNA (reconstitute with 100 ul of water).

Reconstitution Method:

1. Centrifuge at 5,000xg for 5min.
2. Carefully open the tube and add 100ul of sterile water to dissolve the DNA.
3. Close the tube and incubate for 10 minutes at room temperature.
4. Briefly vortex the tube and then do a quick spin (less than 5000xg) to concentrate the liquid at the bottom.
5. Store the suspended plasmid at -20°C. The DNA is stable for at least one year from date of shipping when stored at -20°C.

RefSeq: [NM_026651.2](#)

RefSeq Size: 2656 bp

RefSeq ORF: 1983 bp

Locus ID: 68273

UniProt ID: [Q91X88](#)

Cytogenetics: 4 D1

Gene Summary: Participates in O-mannosyl glycosylation by catalyzing the addition of N-acetylglucosamine to O-linked mannose on glycoproteins. Catalyzes the synthesis of the GlcNAc(beta1-2)Man(alpha1-)O-Ser/Thr moiety on alpha-dystroglycan and other O-mannosylated proteins, providing the necessary basis for the addition of further carbohydrate moieties. Is specific for alpha linked terminal mannose.[UniProtKB/Swiss-Prot Function]