

## Product datasheet for **MG209840**

### **Dbn1 (NM\_019813) Mouse Tagged ORF Clone**

#### **Product data:**

Product Type:	Expression Plasmids
Product Name:	Dbn1 (NM_019813) Mouse Tagged ORF Clone
Tag:	TurboGFP
Symbol:	Dbn1
Mammalian Cell Selection:	Neomycin
Vector:	pCMV6-AC-GFP (PS100010)
E. coli Selection:	Ampicillin (100 ug/mL)



[View online »](#)

ORF Nucleotide  
Sequence:

>MG209840 representing NM\_019813  
Red=Cloning site Blue=ORF Green=Tags(s)

TTTTGTAATACGACTCACTATAGGGCGGCCGGGAATTCGTCGACTGGATCCGGTACCGAGGAGATCTGCC  
GCCCGCATCGCC

ATGGCCGGCGTCAGCTTCAGCGCCACCGCTGGAGCTGTGGCGGCGTACGAGGAGGTGATCCGGGAGG  
AGAGCGCAGCCGACTGGGCTCTGTACACATACGAGGATGGCTCAGATGACCTCAAGCTTGCAGCGTCAGG  
AGAAGGGGGCTTGCAGGAGCTTCCGGCCACTTCGAGAACCAGAAAGTGATGTATGGTTTCTGCAGCGTC  
AAGGACTCCCAAGCTGCCCTGCCAAAATATGTGCTCATCAACTGGGTTGGTGAGGATGTGCCTGATGCC  
GAAAATGTGCTTGCAGCAGTGTGTGGCCAAGGTGGTGAATTCTCCAGGGTGTGATGTCATTGTGAA  
TGCCAGCAGTGTGAAGACATCGATGCTGGTGCCATTGGGCGAGCGGCTCTCCAATGGACTGGCACGGCTC  
TCCAGCCCAGTATTGCACCGCTGCGCCTTCGGGAGGATGAAAATGCTGAACCGTGGGTACCACCTACC  
AGAAGACGGATGCAGCAGTGGAGATGAAGCGGATTAACCGTGAGCAGTTTTGGGAGCAGGCCAAGAAGGA  
GGAAGAGCTGCGGAAGGAGGAGGAGCGGAAGAAGGCTCTGGACGCCAGGCTCAGGTTTGAACAGGAACGG  
ATGGAGCAGGAGCGGCAGGAGCAGGAAGAAGCTGAGCGGCGCTACCGGGAGCGGGAGCAGCAGATTGAGG  
AGCACAGGAGGAAACAGCAGAGTCTGGAAGCTGAAGAAGCCAAGAGGAGGTTAAAGGAGCAGTCTATCTT  
TGGTGACCAGCGGGATGAAGAGGAAGAGTCCCAGATGAAGAAGTCGGAGTCAGAGGTGGAGGAGCGGCT  
GCCATCATTGCCAGCGGCTGATAACCCACGGGAGTTCTTCAGACAGCAGGAACGAGTGGCATCGGCT  
CTGGTGGCAGCTGTGACGCGCTGCGCCTGCACCTTCAACCACCGACCAGGCAGCCACCTGGACAGCCA  
CCGGAGGATGGCACCCTCCTATTCCCACCGGAGCCCATCTGATTCCAGCACAGCCTTACCCCCATC  
GCTGAGCAGATCGAGAGGGCCCTGGATGAGGTCACATCCTCGCAGCCTCCACCTCCACCTCCACCACCTC  
CACCAACTCAAGAGGCCAGGAGACTACCCCAAGCCTGGATGAAGAGCTCAGCAAGGAGGCCAAAGTAAC  
AGCAGCTCCTGAGGTCTGGGCTGGCTGTGCGGCAGAGCCCCCTCAGGCACAGGAACCTCCCCTGTTGCAA  
AGCAGCCCCCTGGAGGACTCGATGTGCACAGAATCTCCAGAGCAGGCTGCCCTGGCTGCCCTGCGGAGC  
CTGCTGCCTCTGTACCTCAGTAGCTGATGTCCATGCAGCTGACACCATTGAGACCACCTGCCACTAC  
TGACACCCTATTGCCAACACGTACCCCTGCCGCTGCCAGCCTCATTGATCTATGGCCTGGCAACGGG  
GAAGAGGCCTCAACACTCAGGCTGAACCCAGGGTGCCACACCACCTCAGGTGCTGAGGCCTCCCTGG  
CAGAGGTGCCCTGCTGAATGAGGCGCTCAGGAGCCGCTGCCGCGGTAGGCGAAGGCTGTGCTAACCT  
TCTTAATTTTGTGAGCTGCCAGAACCTCAGCCACCTTCTGTGACCCAGAGGAGGAAGTAGGAGAAACG  
CTGGCTGCCTCCAGGTCTAATATGCCCTCAGCTCTAGAGGAGGTAGATCAGGTGCTGGAGCAGGAGC  
TGGAGCCAGAACCTCACCTGCTGACCAATGGAGAGACCTCAAAAGGAGGGGACCCAGGCCAGCGAAGG  
ATACTTCACTCAGTCACAGGAGGAAGAGTTCGCCCAATCAGAAGAGCCATGTGCAAAGGTTCCGCTCCT  
GTATTTTACAACAAGCTCCAGAAATCGACATCACCTGCTGGGATGCAGACCCAGTTCCTGAAGAGGAAG  
AGGGCTTCGAGGGTGGTAT

ACCGCTACGCGGCCGCTCGAG – GFP Tag – GTTTAA

**Protein Sequence:** >MG209840 representing NM\_019813  
 Red=Cloning site Green=Tags(s)

MAGVSFSGHRLELLAAYEEVIREESAADWALYTYEDGSDDLKLAASGEGGLQELSGHFENQKVMYGFCSV  
 KDSQAALPKYVLINWVGEDVPDARKCACASHVAKVAEFFQGVVDIVNASSVEDIDAGAIGQRLSNGLARL  
 SSPVLHRLRLREDENAEPVGTTYQKTDAAVEMKRINREQFWEQAKKEEELRKEEERKKALDARLRFEQER  
 MEQERQEQEERERRRYREREQQIEEHRRKQQSLEAEEAKRRLKEQSIFGDQRDEEEESQMKKSESEVEEAA  
 AIIAQRPDNPREFFRQQERVASASGGSCDAPAPPFNHRPGSHLDSHRRMAPTPIPTRSPSDSSTASTPI  
 AEQIERALDEVTSSQPPPPPPPPPTQEAQETTPSLDEELSKAKVTAAPVWAGCAAEPQAQEPPLLQ  
 SSPLEDSMCTESPEQAALAAPAEPAAASVTSVADVHAADTIETTTATDITIANNVTPAAASLIDLWPGNG  
 EEASTLQAEPRVPTPPSGAEASLAEVPLLNEAAQEPLPPVGECCANLLNFDELPEPPATFCDEEEVGET  
 LAASQVLTPMSALEEVDQVLEQELEPEPHLLTNGETTQKEGTQASEGYFSQSQEEFAQSEEPKAVPPP  
 VFYKPPPEIDITCWDADVPVEEEEGFEGGD

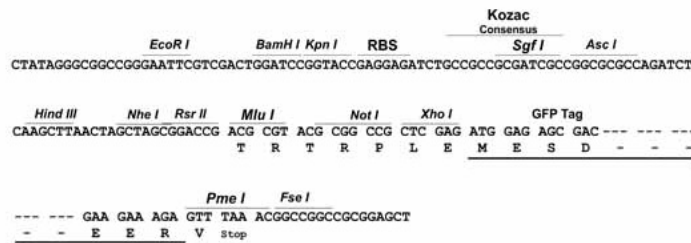
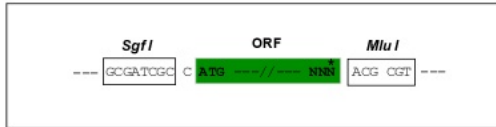
TRTRPLE - GFP Tag - V

**Restriction Sites:**

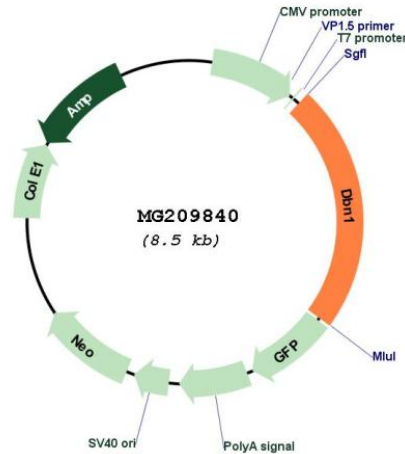
Sgfl-MluI

**Cloning Scheme:**

Cloning sites used for ORF Shuttling:



## Plasmid Map:



ACCN: NM\_019813

ORF Size: 1980 bp

OTI Disclaimer: The molecular sequence of this clone aligns with the gene accession number as a point of reference only. However, individual transcript sequences of the same gene can differ through naturally occurring variations (e.g. polymorphisms), each with its own valid existence. This clone is substantially in agreement with the reference, but a complete review of all prevailing variants is recommended prior to use. [More info](#)

OTI Annotation: This clone was engineered to express the complete ORF with an expression tag. Expression varies depending on the nature of the gene.

Components: The ORF clone is ion-exchange column purified and shipped in a 2D barcoded Matrix tube containing 10ug of transfection-ready, dried plasmid DNA (reconstitute with 100 ul of water).

Reconstitution Method:

1. Centrifuge at 5,000xg for 5min.
2. Carefully open the tube and add 100ul of sterile water to dissolve the DNA.
3. Close the tube and incubate for 10 minutes at room temperature.
4. Briefly vortex the tube and then do a quick spin (less than 5000xg) to concentrate the liquid at the bottom.
5. Store the suspended plasmid at -20°C. The DNA is stable for at least one year from date of shipping when stored at -20°C.

RefSeq: [NM\\_019813.4](#)

RefSeq Size: 2495 bp

RefSeq ORF: 1983 bp

Locus ID: 56320

UniProt ID: [Q9QXS6](#)

Cytogenetics: 13 30.06 cM

**Gene Summary:** Actin cytoskeleton-organizing protein that plays a role in the formation of cell projections (By similarity). Required for actin polymerization at immunological synapses (IS) and for the recruitment of the chemokine receptor CXCR4 to IS (By similarity). Plays a role in dendritic spine morphogenesis and organization, including the localization of the dopamine receptor DRD1 to the dendritic spines (PubMed:25865831). Involved in memory-related synaptic plasticity in the hippocampus (PubMed:25865831).[UniProtKB/Swiss-Prot Function]