

## Product datasheet for **MG209833**

### Eef1d (NM\_029663) Mouse Tagged ORF Clone

#### Product data:

Product Type:	Expression Plasmids
Product Name:	Eef1d (NM_029663) Mouse Tagged ORF Clone
Tag:	TurboGFP
Symbol:	Eef1d
Synonyms:	EF-1-delta
Mammalian Cell Selection:	Neomycin
Vector:	pCMV6-AC-GFP (PS100010)
E. coli Selection:	Ampicillin (100 ug/mL)



[View online »](#)

ORF Nucleotide  
Sequence:

>MG209833 representing NM\_029663  
Red=Cloning site Blue=ORF Green=Tags(s)

TTTTGTAATACGACTCACTATAGGGCGGCCGGGAATTCGTCGACTGGATCCGGTACCGAGGAGATCTGCC  
GCCGCGATCGCC

ATGAGGAGTGGGAAGGCCTCTTGTGCACCTGGAGACCGTCTGGGAGGACAGGCACAAGTATGAGGGAGCCG  
AGCGGCGCTTCCACGAGCAGGAGGCCACACAAGTCGTGCGCGCCGCCACTGCCGCGCCACTGCCTC  
CGCCTCTGTCCAGCAGCTCCTGGACGAAGTGCCAGCTGTGAACGGGCCAGCCAGGAGGACACAGAGGAC  
ACTGAGGAGGCAGAGGCCCAACACCAGCAGCAGGAGTGATCCCGGAAGAGCCACGAGTGCAAGAAGC  
CGATACAGAAAAAGAGGAAGCGCTCCCCGAAAAGTTGGCTGGGCCAGGCAGACCTGGCCCTTGTGGCCCT  
CTCGGCTGACCACGTATGGTTAGACAAGCCACTTTCGACCAGGCAGAAAGCTCCTACCGTCAGAGGCTG  
GCAGATGTAGCTGCCAGGCAGCCAGCCGCTGCTCTGGCCCTCGGGGGCCCTGTACACATGGAAGCC  
ATGTGGCATGCCACCATGTAACCTGGGGATCTGGGTCAACAAGTCTTGTCTTATCAAGCCGAGCGGGC  
TTTTGTGGAGTGGTCTCAGTCTTGGCTGCTGGCTGCAGAGGGGAGCCATAGGCAGGGGACTCCTGACACA  
GGCCAGCAGGCTGCACTCCTGACCTGGCCTGGCCTGCCAGCCTTGCCACCAGCAATGGCCAGCCTC  
CTCTGGGCAGCCTGCAGGCACTGGTGCGGGAGGTATGGCTGGAGAAGCCCGGTACGATGCCGCTGAGAG  
GGGCTTCTATGAGGCCCTGTTTGTGTCATCCCCAGGGAAAGTGCGCCTGCAGGAGCGAGCCAGTCA  
GCAGAGGGTACCCGGAGGGGCGCAGAGACCATCGGAGCTGCAATAACGTAGGAAACAAGAGAGCTGGGT  
CAAAACGGGCCAACGGGGAGGCTCCTCTGCTTTTCCCTACTGGTACTTCTACACAAGGACGCAGAGGC  
CCCCTGGCTCAGCAAGCTACCTACGACAGCGCTGAGTGCCGCCACCATGCCGTTGAGGCCCTGCGCATA  
GCCTGGCGCCTAGAAGCTGCCTCCCTGGCTCACCAGCCACACCCCGTTCTGGCCATCCATGTCAGCC  
TGAGACCAACAGAAAAATGGCTACAACTTTCTAGCGCATGAGAAGATCTGGTTTGACAAGTTTAAATA  
TGATGATGCAGAAAGGAGATTCTATGAGCAGATGAACGGGCTGTGACCTCCGGCTCCCGCCAGGGAAT  
GGTGCCAGCGTATCCTCCGAGACATTGCAAGAGCCAGAGAGAACATCCAGAAATCCTTGCTGGAAGCT  
CAGGCCCTGGAGCCTCCAGTGGACCTGGTGGAGACCACAGTGAGCTCATTGTGAGGATTACCAGTCTGGA  
AGTGGAGAACCAGAACCTTCGAGGCGTGGTGAAGATTTGCAGCAGGCCATTTCCAAGTTGGAGGCCCGG  
CTGAGCTCTCTAGAGAAGAGTTCACCTACTCCCCGAGCCACGGCCCCACAGACCAACATGTCTCTCCTA  
TGCGTCAAGTGGAGCCCCAACCAAGAAAGGAGCCACACCAGCAGAGGACGATGAGGACAAGGACATTGA  
CCTGTTCCGCGAGTGACGAGGAGGAAGAAGATAAGGAGGCTGCCCGACTACGGGAGGAGAGGCTACGCCAG  
TACGCAGAGAAGAAGGCCAAGAAGCCCACTGGTGGCCAAATCCTCCATCCTTTTGGATGTTAAACCTT  
GGGATGATGAGACTGACATGGCCAGCTAGAGACTTGTGTGCGTTCCATCCAATTGGACGGGCTGGTTTG  
GGGGCCCTCCAAGCTTGTGCCTGTTGGCTATGGCATCCGGAAGCTGCAGATCCAGTGTGTGGTGGAGGAT  
GACAAAGTGGGCACCGACTTGTCTGAGGAGGAGATCACCAATTTGAGGAGCATGTGCAGAGTGTGACACA  
TCGCAGCTTTCAACAAGATC

ACGCGTACGCGGCCGCTCGAG - GFP Tag - GTTTAA

**Protein Sequence:** >MG209833 representing NM\_029663  
 Red=Cloning site Green=Tags(s)

MRSKGASCALETVWEDRHKYEGAERRFHEQEATQVAAAAATAAATASASVQQLLDEVPVNGPSQEDTED  
 TEEAEAPNTSSRSDPGKSHECKPIQKKRKRSPKSWLGQADLALVGLSADHVWLDKPLFDQAESSYRQL  
 ADVAAQAAQPPALAPRGPCCTHGSHVACHHVTWGIWVNKSCFDQAERAFVEWSQSLLLAAEGSHRQGTPTD  
 GQQAVTPDLALACQP CPPANGQPPLGSLQALVREVWLEKPRYDAAERGFYEALFDGHPPGKVRQLQERASQ  
 AEGTRRRRRDRSCNNVGNKRAGSKRANGEAPPAFPYWFYFLHKDAEAPWLSKPTYDSAECRHHAVEALRI  
 AWRLEAASLAHRPPTPRSGPSMSSLRPNRKMATNFLAHEKIWFDFKDYDDAERRFYEQMNGPVTSGSRQEN  
 GASVILRDIARARENIQKSLAGSSGPGASSGPGGDHSELIVRITSLEVENQNLRGVVQDLQQAISKLEAR  
 LSSLEKSSPTPRATAPQTQHVSPMRQVEPPTKKGATPAEDDEDKIDLFGSDEEEEDKEAARLREERLRQ  
 YAEKKAKKPTLVAKSSILLDVKPWDETDMAQLETCVRSIQLDGLVWGASKLVPVGYGIRKQLQIQCVVED  
 DKVGTDLLEEEITKFEHVQSVDIAAFNKI

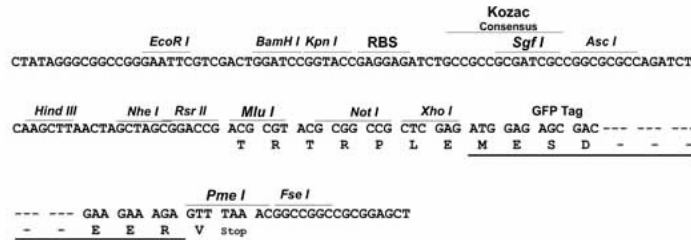
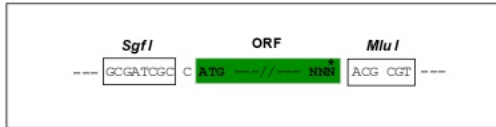
TRTRPLE - GFP Tag - V

**Restriction Sites:**

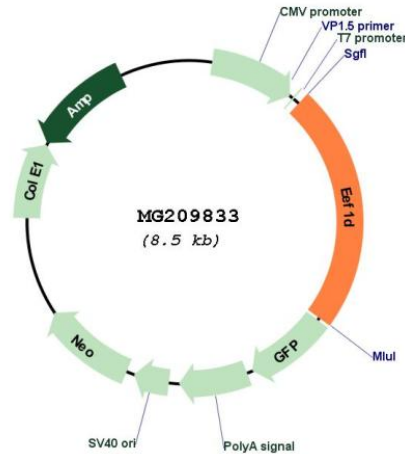
Sgfl-MluI

**Cloning Scheme:**

Cloning sites used for ORF Shuttling:



## Plasmid Map:



ACCN: NM\_029663

ORF Size: 1980 bp

**OTI Disclaimer:** The molecular sequence of this clone aligns with the gene accession number as a point of reference only. However, individual transcript sequences of the same gene can differ through naturally occurring variations (e.g. polymorphisms), each with its own valid existence. This clone is substantially in agreement with the reference, but a complete review of all prevailing variants is recommended prior to use. [More info](#)

**OTI Annotation:** This clone was engineered to express the complete ORF with an expression tag. Expression varies depending on the nature of the gene.

**Components:** The ORF clone is ion-exchange column purified and shipped in a 2D barcoded Matrix tube containing 10ug of transfection-ready, dried plasmid DNA (reconstitute with 100 ul of water).

**Reconstitution Method:**

1. Centrifuge at 5,000xg for 5min.
2. Carefully open the tube and add 100ul of sterile water to dissolve the DNA.
3. Close the tube and incubate for 10 minutes at room temperature.
4. Briefly vortex the tube and then do a quick spin (less than 5000xg) to concentrate the liquid at the bottom.
5. Store the suspended plasmid at -20°C. The DNA is stable for at least one year from date of shipping when stored at -20°C.

RefSeq: [NM\\_029663.2](#)

RefSeq Size: 2847 bp  
RefSeq ORF: 1983 bp  
Locus ID: 66656  
UniProt ID: [P57776](#)  
Cytogenetics: 15 D3  
Gene Summary: Isoform 1: EF-1-beta and EF-1-delta stimulate the exchange of GDP bound to EF-1-alpha to GTP, regenerating EF-1-alpha for another round of transfer of aminoacyl-tRNAs to the ribosome.[UniProtKB/Swiss-Prot Function]