

Product datasheet for **MG209830**

Kif22 (NM_145588) Mouse Tagged ORF Clone

Product data:

Product Type:	Expression Plasmids
Product Name:	Kif22 (NM_145588) Mouse Tagged ORF Clone
Tag:	TurboGFP
Symbol:	Kif22
Synonyms:	AU021460; C81217; Kid; Kif22a
Mammalian Cell Selection:	Neomycin
Vector:	pCMV6-AC-GFP (PS100010)
E. coli Selection:	Ampicillin (100 ug/mL)



[View online »](#)

ORF Nucleotide
Sequence:

>MG209830 representing NM_145588
Red=Cloning site Blue=ORF Green=Tags(s)

TTTTGTAATACGACTCACTATAGGGCGGCCGGGAATTCGTCGACTGGATCCGGTACCGAGGAGATCTGCC
GCCGCGATCGCC

ATGAGCTTAAGGGCTAAGACGTGTCCGACGACGGGAGATGGCGTCGGCCACCTCAGGACCTGGCCGCT
GTGTAAGCAAAGGAGGGCTTGGCCGGCGTCCGCCCTTAGCTCGAGTAAGGGTGGCTGTGCGGCTGCGCCC
GTTTATGGATGGAGAGACAGAAGCGAAGGAGCTCCCTGTGTCCGAGCCATAGACAGCTGCTCTCTTGAA
GTGGCTAACTGGAAGAAATACCAGGAGACGCTCAAATATCAGTTTGATGCCTTCTATGGCGAGAAGAGCA
CTCAGCAGGAAGTCTATGTAGGTTCACTACAGCCCATCTAAGGCACTTGTGGAAGGGCAGAATGCCAG
TGTAATGCTATGGCCCTACTGGGACAGGGAAGACACACAATGCTGGGACAGCCAGAGCAACCTGGA
GTGATTCCTCGGGCTCTCATGGACCTCTGCAACTAGCAAGGGAAGAGAGTGTGAGGGACGGCCATGGG
ACGTTTCTGTTGCTATGCTCTATTTAGAGATCTACCAGGAAAAGTATTAGACCTCTTGATCCTGCATC
AGGAGACCTCGTGATCCGCGAAGACTGCCGAGGGAACATCCTGATCCCAGGCCTCACACAGAAGCCCATC
ACCAGTCTCTGACTTCGAGCAGCACTTCCTTCCAGCCAGTAGAAATCGAGCTGTAGGAGCCACCCGGC
TTAACCAGCGCTCTTCCCGTAGTCACGCAGTGTCTTGGTCAAGGTAGATCAGCGTGAACGTTTGACTCC
ATTTCCGACGCGGGAAGGAAAATCTACCTTATTGATTTGGTGGTTCAGAGGACAACCGTCGCACAGGC
AACCAGGGCATTGCGCTCAAAGAGAGCGGAGCCATCAACACCTCCCTCTTGTACTGGGCAAAGTGGTGG
ATGCATTAACCAGGGCCTCCCTCGCATACCATACCGGACAGCAAGTCACTCGTCTGCTGCAGGACTC
TCTGGGAGGCTCAGCTCATAGCATCCTCATTGCCAACATTGCTCCTGAAAGACGTTTTTACCAGGATACA
ATTTGAGCATTGAACTTCACTGCTAGGTCCAAGGAGGTGATTAACCGGCCTTCCACCAATGAGAGTCTAC
AGCCTCATGCCTTGGCACCTGTTAAGCTGTCTCAGAAAGAAGTGTAGGCCCGTCAGAGGCAAAGAAGGC
CAAAGGCCCTGAAGAAGAATCAACTGGGAGCCCTGAGTCTACAGCAGCTCCAGCGTCTGCCTCCAGAAA
CTAAGCCTCTTACAGAAGCTAAGCAATATGGATCCAGCCATGTTGGAGAACCCTCTGAGTATGGAACGTT
TGCTGGGTTCCAGGGAAGCCAAGGGACCCCTACTGAATACCCCAAAGCGAGAACGAATGGTGTCTCAT
GAAGACAGTGGAGGAAAAGAAGTCTAGAGATTGAGAGGCTTAAGATGAAGCAAAAAGAAGTGGAAAGCAAG
GTGTTGGCCAGGAGGCACCGGATCCAAGGAAAAAGAGAACAATCCACAATTCTCCAGCCGCTGCTCT
CTTATAGTGGCACAGTGGCAAAGCCCTGAAAAAGGCTGTAGTGTGCCCTGCAACGGATTGAGAAAGCA
GCGAGAGTCTCAAACCAATCCAGCTCCTGAAGAAAGGCCCAAAGGAAGCTGGAGCCATCCCCTGAG
TCAGAAGCTGTGAAAAGGATGAGGACTACTGGGAGGTACAGATTAGCCAGAGTACTGGCACATGGGC
GCAAAAAATTATTGGATCTGCTGAATGAAGGCTCAGCTCGGGAAGTGCAGCAGCTGCAGCGCATTGGCCA
GAAGAAAGCCAGCTCATCGTGGGCTGGAGGGAGCTCCACGGCCCTTCAAGTGAAGTGGAGGACTTGGAA
CAGGTGGAAGGCATCTCTGGGAAGCAGGTGGAGTCTTCTGAAGGCGAATCTCTTGAGCTTGGCCGCCA
GCCAGCACAGCGGTCCCTCT

ACGCGTACGCGGGCCGCTCGAG – GFP Tag – GTTTAA

Protein Sequence: >MG209830 representing NM_145588
 Red=Cloning site Green=Tags(s)

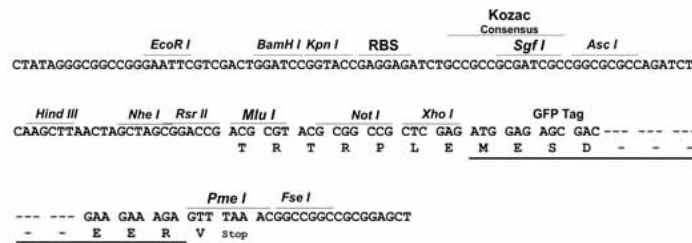
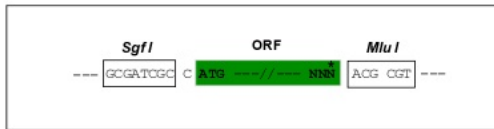
MSLRAKTCPQRREMASATSGPGRVCVSKGGLGRRPPLARVRVAVRLRPFMDGETEAKELPCVRAIDSCSLE
 VANWKYQETLKYQFDFAYGEKSTQQEVYVGSVQPILRHLLLEGQNASVLAYGPTGAGKTHMLGSPEQPG
 VIPRALMDLLQLAREESAEGRPWDVSVAMSYLEIYQEKVLDLLDPASGDLVIREDCRGNILIPGLTQKPI
 TSFSDFEQHFLPASRNRAVGATRLNQRSSRSHAVLLVKVDQRERLTPFRQREGKLYLIDLAGSEDNRRTG
 NQGIRLKESGAINSTLFLVKGKVDALNQGRLPRIPYRDSKLRLLQDSLGGSAHSILIANIAPERRFYQDT
 ISALNFTARSKEVINRPFNTESLQPHALAPVKLSQKELLGPSEAKKAKGPEEESTGSPESTAAPASASQK
 LSLQKLSNMDPAMLENLLSMERLLGSQGSQGTPLNTPKRERMVLMKTVEEKNEIERLKMKELEAK
 VLAQEAPDPREKENTPTILQPPASYSQVAKPLKAVVMPLQRIQKQRESSNQIQLLKKGPKRKLEPSPE
 SEAVEKDEYWEVQISPELLAHGRKLLDLLNEGSARELRSLQRIGQKKAQLIVGWRELHGPFSEVEDLE
 QVEGISGKQVESFLKANLLSLAASQHSGPS

TRTRPLE - GFP Tag - V

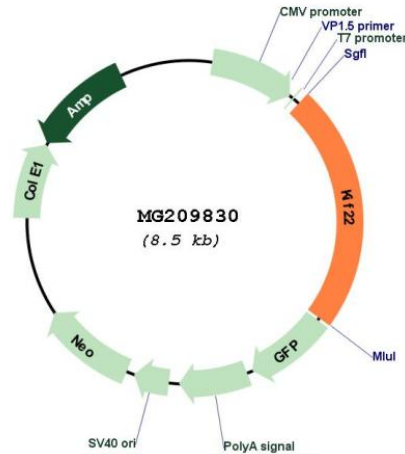
Restriction Sites: SgfI-MluI

Cloning Scheme:

Cloning sites used for ORF Shuttling:



Plasmid Map:



ACCN: NM_145588

ORF Size: 1980 bp

OTI Disclaimer: The molecular sequence of this clone aligns with the gene accession number as a point of reference only. However, individual transcript sequences of the same gene can differ through naturally occurring variations (e.g. polymorphisms), each with its own valid existence. This clone is substantially in agreement with the reference, but a complete review of all prevailing variants is recommended prior to use. [More info](#)

OTI Annotation: This clone was engineered to express the complete ORF with an expression tag. Expression varies depending on the nature of the gene.

Components: The ORF clone is ion-exchange column purified and shipped in a 2D barcoded Matrix tube containing 10ug of transfection-ready, dried plasmid DNA (reconstitute with 100 ul of water).

Reconstitution Method:

1. Centrifuge at 5,000xg for 5min.
2. Carefully open the tube and add 100ul of sterile water to dissolve the DNA.
3. Close the tube and incubate for 10 minutes at room temperature.
4. Briefly vortex the tube and then do a quick spin (less than 5000xg) to concentrate the liquid at the bottom.
5. Store the suspended plasmid at -20°C. The DNA is stable for at least one year from date of shipping when stored at -20°C.

RefSeq: [NM_145588.1](#), [NP_663563.1](#)

RefSeq Size:	2086 bp
RefSeq ORF:	1983 bp
Locus ID:	110033
UniProt ID:	Q3V300
Cytogenetics:	7 69.29 cM
Gene Summary:	Kinesin family member that is involved in spindle formation and the movements of chromosomes during mitosis and meiosis. Binds to microtubules and to DNA. Plays a role in congression of laterally attached chromosomes in NDC80-depleted cells.[UniProtKB/Swiss-Prot Function]