

Product datasheet for **MG209814**

Hal (NM_010401) Mouse Tagged ORF Clone

Product data:

Product Type:	Expression Plasmids
Product Name:	Hal (NM_010401) Mouse Tagged ORF Clone
Tag:	TurboGFP
Symbol:	Hal
Synonyms:	his; hist; histidase; Hs; Hsd
Mammalian Cell Selection:	Neomycin
Vector:	pCMV6-AC-GFP (PS100010)
E. coli Selection:	Ampicillin (100 ug/mL)



[View online »](#)

ORF Nucleotide Sequence:

>MG209814 representing NM_010401
 Red=Cloning site Blue=ORF Green=Tags(s)

TTTTGTAATACGACTCACTATAGGGCGGCCGGAATTCGTCGACTGGATCCGGTACCGAGGAGATCTGCC
 GCC**CGATCGCC**

ATGCCTAGGTACACAGTGCACGTGCGTGGGAATGGCTGGCGGTGCCCTGTCAGGATGGGAAGCTCACTG
 TTGGCTGGCTGGCCGTGAGGCTGTGCGACGCTACATGAAGAACAACCGGACAATGGTGGCTTCACTTC
 CGTGGATGAAGTCAATTCTTTGTGCATCGGTGCAAGGGCCTGGGCTGCTGGACAATGAGGACGAGCTG
 GAGGTGGCCTTAGAGGACAATGAGTTCGTAAGAAGTGGTATTGAAGGTGATGTGATGTCTCCTGATTTC
 TTCCGTCGCAGCCAGAAGGAGTTTTCTATACAGCAAATACCGGGAGCCTGAAAAATACATTGCCCTAGA
 TGGGGACAGTCTGAGCACAGAGGATCTGGTCAACCTGGGCAAGGGACGTTACAAGATAAAGCTCACTTCG
 ATTGCTGAGAAGAAAGTGCAGCAGTCCCGGGAGGTCATCGACAGCATCATCAAAGAAAGAACAGTTGTTT
 ACGGCATCACCACAGTTTTGGAAAATTTGCTAGAAGTGAATCCCTGCCAATAAGCTACAGGAGCTTCA
 AGTCAACTTAGTCCGTTCCATTCTTCAGGTGTTGGGAAACCACTCAGTCTGAGAGGTGTCGGATGCTC
 TTGGCTTTGAGGATCAAGTCTTAGCCAAAGGTTACAGTGGGATTTCTTGGAGACTGAAACAAGTTA
 TTGAAGCATTTAATGCCTCCTGCCTGCTCCTATGTTCCAGAGAAAGGAACTGTGGGTGCCAGCGGAGACCT
 TGCCCCACTCTCTCATCTCGCTCTGGGGCTCATCGGAGAAGGAAAGATGTGGTCCCCGAAGAGTGGCTGG
 GCAGATGCTAAATATGTTCTAGAAGCCCATGGACTGAAACCAATTGTCTTGAAACCAAAAGAAGGCTGG
 CACTCATCAACGGGACACAGATGATCACTTCCCTGGGCTGTGAAGCCCTGGAGCGAGCCAGCGCTATTGC
 CCGCAAGCTGATATTGTGGCTGCCTTGACCCTGGAGGTGCTGAAGGGCACCAACAAAGCCTTCGATAAC
 GACATCCATGCTGTCCGACCTCACCGGGCAAATTAAGTTGCTTTCCGATTCCGGTCCCTCCTGGACT
 CGGATCACCAACATCAGAAATCGCAGAAAGCCACAGTTCTGCGATCGTGTTCAGGACGCGTACACCTT
 ACGCTGCTGTCCACAGGTCCACGGTGTGGTGAACGACACAATAGCCTTTGTGAAGGACATCATCACTACA
 GAACTGAACAGCGCCACAGACAATCCTATGGTCTTTGCCAGTTCGAGGGGAGACAATTTAGGAGGAACT
 TCCATGGTGAATACCCAGCCAAAGCCCTGGACTATTTGGCCATTGGTGTCCATGAACTTGCAGCAATTAG
 TGAAAGAAGAATCGAAAGGCTGTGTAATCCTTCCCTCAGCGAGCTGCCTGCCTTCTGGTGGCTGAAGGA
 GGTCTCAATTCTGGTTCATGATAGCCCACTGCACCGCAGCAGCCCTGGTGTCTGAGAGCAAGGCTCTGT
 GCCACCTTCATCTGTGGACTCACTCTCGACCAGTGTCTACAGAGGACCACGCTCCATGGGAGGATG
 GGCAGCCAGGAAAGCCCTCAGGGTGTGCGAGCAGTGAACAAGTGTAGCCATTGAGCTTCTCGCGGCC
 TGCCAGGGTATAGAGTTTCTGCGCCCCTGAAAACAACCACTCCGCTGGAGAAGGTGTACGACCTGGTGC
 GCTCCGTAGTAAGGCCCTGGATAAAAGATCGCTTCATGGCCCCGACATTGAGGCAGCACACAGGTTGCT
 TCTTGACCAAAAGGTTTGGGAGGTTGCCGACCGTACATCGAGAAATACAGAATGGAGCACAATCCAGAA
 TCCAGACCGCTTCTCCAACAGCGTTTTCACTAGAATCTCTCGAAAGAACTCAGCCACAATCCCAGAGT
 CTGACGATCTT

AG**CGGACCG**ACGCGTACGCGGCCGCTCGAG - GFP Tag - GTTTAA

Protein Sequence: >MG209814 representing NM_010401
Red=Cloning site Green=Tags(s)

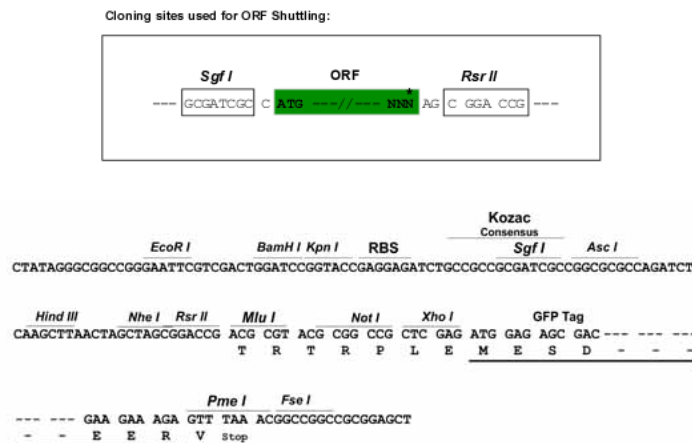
```

MPRYTVHVRGEWLAVPCQDGKLVGWLGREAVRRYMKNKPDNGGFTSVDEVQFLVHRCKGLGLLDNEDEL
EVALEDNEFVEVIEGDVMSPDFIPSQPEGVFLYSKYREPEKYIALDGDSLSTEDLVNLGKGRYKIKLTS
IAEKVQQSREVIDSIIKERTVVYGITTFGKGFARTVIPANKLQELQVNLVRSHSSGVGKPLSPERCRL
LALRINVLAKGYSGISLETLKQVIEAFNASCLSYVPEKGTVGASGDLAPLSHLALGLIGEKMWSPKSGW
ADAKYVLEAHGLKPIVLKPK EGLALINGTQMITS LGCEALERASAIARQADIVAALTLEVLKGTTKAFDT
DIHAVRPHRGQIEVAFRFRSLDSDHHPSEIAESHRCDRVQDAYTLRCCPQVHGVVNDTIAFVKDIITT
ELNSATDNPMVFASRGETISGGNFHGEYPAKALDYLAIGVHELAAISERRIERLCNPSELPAFLVAEG
GLNSGFMI AHCTAAALVSESKALCHPSSVDSLSTSAATEDHVSMGGWAARKALRVVEHVEQVLAIELLAA
CQGI EFLRPLKTTT PLEKVVYDLVRSVVRPWIKDRFMAPDIEAAHRLLLDQKVWEVAAPYIEKYRMEHIPE
SRPLSPTAFSLES LRKNSATIPESDDL
    
```

SGPTRRRLE - GFP Tag - V

Restriction Sites: SgfI-RsrII

Cloning Scheme:



ACCN: NM_010401

ORF Size: 1971 bp

OTI Disclaimer: The molecular sequence of this clone aligns with the gene accession number as a point of reference only. However, individual transcript sequences of the same gene can differ through naturally occurring variations (e.g. polymorphisms), each with its own valid existence. This clone is substantially in agreement with the reference, but a complete review of all prevailing variants is recommended prior to use. [More info](#)

OTI Annotation: This clone was engineered to express the complete ORF with an expression tag. Expression varies depending on the nature of the gene.

Components: The ORF clone is ion-exchange column purified and shipped in a 2D barcoded Matrix tube containing 10ug of transfection-ready, dried plasmid DNA (reconstitute with 100 ul of water).

Reconstitution Method:

1. Centrifuge at 5,000xg for 5min.
2. Carefully open the tube and add 100ul of sterile water to dissolve the DNA.
3. Close the tube and incubate for 10 minutes at room temperature.
4. Briefly vortex the tube and then do a quick spin (less than 5000xg) to concentrate the liquid at the bottom.
5. Store the suspended plasmid at -20°C. The DNA is stable for at least one year from date of shipping when stored at -20°C.

RefSeq: [NM_010401.3](#), [NP_034531.1](#)

RefSeq Size: 2758 bp

RefSeq ORF: 1974 bp

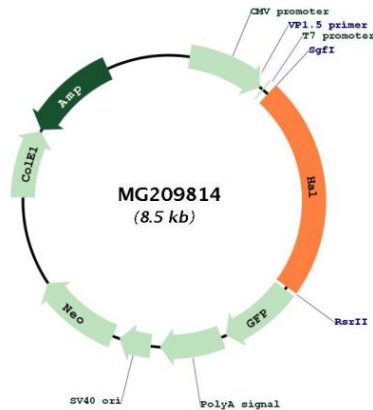
Locus ID: 15109

UniProt ID: [P35492](#)

Cytogenetics: 10 48.49 cM

Gene Summary: This gene encodes a member of the histidase protein family. The encoded protein is a cytosolic enzyme which catalyzes the first reaction in histidine catabolism. Defects in this protein cause histidinemia, which is characterized by increased histidine in blood, urine, and cerebrospinal fluid. [provided by RefSeq, Dec 2015]

Product images:



Circular map for MG209814