

Product datasheet for **MG209808**

Rap1gap (BC052065) Mouse Tagged ORF Clone

Product data:

Product Type:	Expression Plasmids
Product Name:	Rap1gap (BC052065) Mouse Tagged ORF Clone
Tag:	TurboGFP
Symbol:	Rap1gap
Synonyms:	1300019I11Rik; 2310004O14Rik; AI427470; ARPP-90; Gap; Rap1ga1; Rap1GAP1
Mammalian Cell Selection:	Neomycin
Vector:	pCMV6-AC-GFP (PS100010)
E. coli Selection:	Ampicillin (100 ug/mL)



[View online »](#)

ORF Nucleotide Sequence:

>MG209808 representing BC052065
 Red=Cloning site Blue=ORF Green=Tags(s)

TTTTGTAATACGACTCACTATAGGGCGGCCGGGAATTCGTCGACTGGATCCGGTACCGAGGAGATCTGCC
 GCC**CGGATCGCC**

ATGGATGAACAGCGATGCTCCTCCCGCCACCCTCAAGACGGAGGAGGACTACATTCCTACCCAAGTG
 TCCATGAGGTTTTGGGGCGAGAAGGGCCCTTCCCCTCATCCTACTGCCCAAGTTTGGGGGCTACTGGAT
 TGAAGGCACCAACCATGAAATCAGCAGCCTCCCTGAGACAGAGCCGCTGCAGTCTCCACCAACCAAGGTC
 AAGCTGGAGTGCAACCCACAGCCGAATCTACCGGAAGCACTTCTGGGCAAGGAGCACTTCAATTACT
 ATTCACTGGACTGCTCTCGGCCACCTGGTATTCTCGCTCAAGTATGATGTCATCGGGGATCAGGAGCA
 CCTGCGGTGTTGCTTAGGACCAAGTGTGCGACCCACCACGATGTCATCCCCATCTCTGCCTCACCGAG
 TTCCCAACGTGGTCCAGATGGCAAAGTGGTATGTGAGGATGTCAATGTGGATCGATTCTACCCGTGC
 TTTACCCTAAGGCCTCCAGGCTCATTGTCACCTTTGACGAACATGTTATCAGCAATAACTCAAGTTTGG
 AGTCATTTATCAGAAGCTTGGCCAGACCTTGAGGAAGAACTATTCAGTACCAACGAGGAAAGTCCCTGCC
 TTCGTGGAATTCCTGGAGTTCTGGGCCAGAAAGTGAATTCAGGATTTCAAGGGGTCCGAGGAGGCC
 TTGACGTGACTCACGGGACAGCGGGACCGAGTCCGTATACTGCAACTTCCGCAACAAGGAGATCATGTT
 TCACGTGTCCACCAAGCTGCCATACACAGAAGGGGACGCTCAGCAGTTGCAGCGGAAGCGGCATATCGGG
 AACGACATCGTCGCTGTGGTCTTCCAGGACGAAAAACGCGCTTTCGTGCCAGACATGATTGCATCCAAC
 TTCTGCATGCCTATGTGGTGGTGCAGGCAGAGGGGGTGGCCCCGATGGCCCCCTCTACAAGTCTCTGT
 CACTGCTAGAGACGATGTGCCCTTTTTGGGCCCTCCCTCCCGGATCCTGCTGTGTTAGGAAGGGGCT
 GAGTCCAGGAATTTCTGCTGACGAAGTTGATCAATGCCGAGTATGCGTGTTACAAGCAGAGAAGTTTG
 CCAAACCTGGAGGACGGACGCGTCCCGCCCTTCTTGAGACGCTCTACGAGGAGCTCCATATTCACAGCCA
 GTCCATGATGGGCCTCGGCGGCACGACGACAAGATGGAGAACGGCAGCGGTGGGGGTGGCTTCTTCGAG
 TCTTTCAAGAGGGTCATCCGGAGCCGGAGTCAAGTCCATGGATGCCATGGGACTGAGCAACAAGAAACCA
 ACACCGTGTCAACTAGCCACAGTGGGAGCTTACCCCCAACAACCCTGACCTGGCCAAGGACGCGGCAT
 ATCCCTGATTGTCCCTGGAAAAAGCCCCACAAGGAAGAAGTCTGGTCCGTTTGGCTCACGCCGACGAGT
 GCCATTGGCATCGAGAACATCCAGGAGTTTCCAGGAGAAGAGGGAGAGCCCTCCAGCTGGCCAGAAGACCC
 CAGACAGCGGGCATGTCTACAAGAGCCCAAGTCAAGAACTCATCCACTCAGAGCTCCCCAGAGATGCC
 CACGACCAAGAACAGAGTGGAGTCCGCTGCCAGAGAACGGAAGTGTGCAGGGCTTCTCCAGATCTTCC
 TCCAGCGCCAGCAGCTTACCAGCGTGGTGGAGGAGACGGAGGGGTAGACGGGGATGATACAGGCCTGC
 ACATGGCTGGACGACAGCGTGTGACACCAGAGCGGGGGCAGCTCCCCAGTGAGGTGGCTCCCTCCTGCC
 CCCTTCCAGGCCTCACACGGTCAACCCACCCAGACGTCGGCAAGTCCGGGGACCTGCGTGTCCCAGAGA
 TCAAGTCCAACCTGAAACATCTGAGCAGCACACCCAGATGGGCTGCTAGCTGTACCTCATCAGCA
 GGCGGGAC

AG**CGGACCG**ACGCGTACGCGGCCGCTCGAG - GFP Tag - GTTTAA

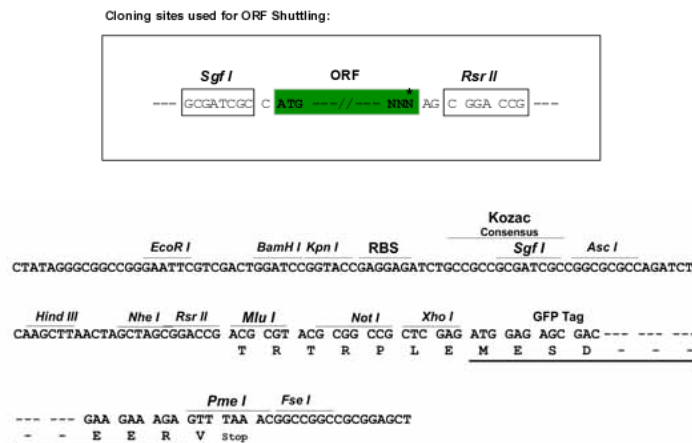
Protein Sequence: >MG209808 representing BC052065
Red=Cloning site Green=Tags(s)

```
MDEQRCSFPPPLKTEEDYIPYPSVHEVLGREGPFPLILLPQFGGYWIEGTNHEISSLPETEPLQSPPTTKV
KLECNPTARIYRKHFLGKEHFNYYSLDTALGHLVFLSKYDVIQDQEHLRLLLRTKCRTHHDVIPISCLTE
FPNVVQMAKLVCEDVNVDRFYVPLYPKASRLIVTFDEHVISNNFKFVGIYQKLGQTSSEELFSTNEESPA
FVEFLEFLGQKVKLQDFKGFGRGLDVTHGQTGTESVYCNFRNKEIMFHVSTKLPYTEGDAQQLQRKRHIG
NDIVAVVFQDENTPFVPMIASNFLHAYVVVQAEGGPDGPLYKVSVTARDDVPPFGPPLPDPVAVFRKGP
EFQEFLLTKLINAAYACYKAEKFAKLEERTRAALLETLYEELHIHSQSMMLGGDDDKMENGSGGGGFFE
SFKRVIRSRQSMDAMGLSNKKPNTVSTSHSGSFTPNNDLAKAAGISLIVPGKSPTRKKSFPFGSRRSS
AIGIENIQEVQEKRESPPAGQKTPDSGHVSQEPKSENSSTQSSPEMPTTKNRVESAAQRTEVLQGFSSRS
SSASSFTSVVEETEGVDGDDTGLHMAGRQREHHERGQLPSEVAPSCPPSQASHGHPTQTSASRGLRVRP
SRSNWKHLSSTHPRWAASCHLISRRD
```

SGPTRRRLE - GFP Tag - V

Restriction Sites: SgfI-RsrII

Cloning Scheme:



ACCN: BC052065

ORF Size: 1970 bp

OTI Disclaimer: The molecular sequence of this clone aligns with the gene accession number as a point of reference only. However, individual transcript sequences of the same gene can differ through naturally occurring variations (e.g. polymorphisms), each with its own valid existence. This clone is substantially in agreement with the reference, but a complete review of all prevailing variants is recommended prior to use. [More info](#)

OTI Annotation: This clone was engineered to express the complete ORF with an expression tag. Expression varies depending on the nature of the gene.

Components: The ORF clone is ion-exchange column purified and shipped in a 2D barcoded Matrix tube containing 10ug of transfection-ready, dried plasmid DNA (reconstitute with 100 ul of water).

Reconstitution Method:

1. Centrifuge at 5,000xg for 5min.
2. Carefully open the tube and add 100ul of sterile water to dissolve the DNA.
3. Close the tube and incubate for 10 minutes at room temperature.
4. Briefly vortex the tube and then do a quick spin (less than 5000xg) to concentrate the liquid at the bottom.
5. Store the suspended plasmid at -20°C. The DNA is stable for at least one year from date of shipping when stored at -20°C.

RefSeq: [BC052065](#), [AAH52065](#)

RefSeq Size: 3215 bp

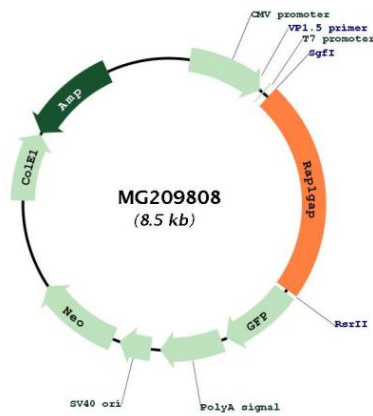
RefSeq ORF: 1970 bp

Locus ID: 110351

Cytogenetics: 4 70.02 cM

Gene Summary: GTPase activator for the nuclear Ras-related regulatory protein RAP-1A (KREV-1), converting it to the putatively inactive GDP-bound state.[UniProtKB/Swiss-Prot Function]

Product images:



Circular map for MG209808