

Product datasheet for **MG209793**

Scnn1g (NM_011326) Mouse Tagged ORF Clone

Product data:

Product Type:	Expression Plasmids
Product Name:	Scnn1g (NM_011326) Mouse Tagged ORF Clone
Tag:	TurboGFP
Symbol:	Scnn1g
Synonyms:	SCNEG
Mammalian Cell Selection:	Neomycin
Vector:	pCMV6-AC-GFP (PS100010)
E. coli Selection:	Ampicillin (100 ug/mL)



[View online »](#)

ORF Nucleotide
Sequence:

>MG209793 representing NM_011326
Red=Cloning site Blue=ORF Green=Tags(s)

TTTTGTAATACGACTCACTATAGGGCGGCCGGAATTCGTCGACTGGATCCGGTACCGAGGAGATCTGCC
GCCGCGATCGCC

ATGGCGCCTGGAGAGAAGATCAAAGCCAAAATCAAAAAGAATCTGCCAGTTCGAGGCCCCAGGCACCGA
CCATTAAGGACCTGATGCATTGGTACTGCCTGAACACCAACACCCACGGCTGCCGCGCATCGTGGTGTC
CCGAGGCCGCTTCGCGCCTGTTGTGGATTGCGTTCACGCTGACAGCAGTGGCCCTCATTATCTGGCAG
TGCGCCCTCCTCGTCTTCTTTCTACACCGTCTCTGTCTCCATCAAAGTCCACTCCAGAACTGGATT
TCCCCGCTGTCACTATCTGCAATATCAACCCCTACAAGTACAGTGTGTGAGTGACCTCCTGACTGACTT
GGACAGTGAGACAAAACAGGCCTTGCTGTCTTGTATGGGGTCAAAGATGTTCTAGACAGTACACCTCGG
AAACGCCGGGAAGCAGGATCCATGCGGTCCACGTGGGAAGGCACACCACCCAGATTTCTCAACCTGATCC
CATTGTTGGTCTTCAATGAGAACGAGAAGGAAAGGCCAGGGACTTCTTCACTGGTGGAAAGCGGAAAAT
CAGTGGGAAAATCATACACAAGGCTTCTAATGTATGCACGTTTATGAGTGAAGAACTGGTGGGATTT
CAGTTGTGCTCAAATGACACCTCTGACTGTGCCACCTACACCTTCACTCAGGAATCAATGCCATCCAGG
AGTGGTACAACTTCACTACATGAATATCATGGCACAGGTGCCTCTAGAGAAGAAAATCAACATGAGCTA
TTCTGCCGAAGAAGTCTGGTGACCTGCTTCTTCGATGGGATGTCCTGTGATGCCAGGAACCTCACTCTT
TTCCACCATCCAATGTATGGGAAGTGTACACGTTCAACAACAGAGAAAACGCCACCATCCTCAGCACCT
CCATGGGAGGCAGTGAGTATGGTCTGCAAGTCACTTATACATAAACGAAGATGAGTACAACCCCTTCT
GGTGTCACTCCACTGGAGCCAAGGTGCTTGTCCATCAGCAGAATGAATACCTTTCATCGAAGACGTGGGG
ACCGAGATCGAGACAGCAATGTCCACTTCCATAGGAATGCACCTGACAGAATCCTTCAAGCTGAGCGAAC
CTTACAGCCAGTGCACAGAGGACGCGAGCGATGTGCCCGTCAACAACATCTACAATGCTGCCTATTCCT
CCAGATCTGCCTTACTCATGCTTCCAACGAAGATGGTGGAAAATGTGGCTGTGCCAGTACAGTCAG
CCTCTACCTCCAGCAGCCAATTACTGCAACTACCAGCAACACCCCAACTGGATGTATTGCTACTACCAGC
TGTACCAGGCCTTGTCCGGGAAGAAGTGGGCTGCCAATCAGTGTGCAAGCAATCCTGCAGCTTTAAGGA
ATGGCACTGACCACCAGCTTGGCACAGTGGCCATCTGAGGCTTCTGAGAAATGGTTGTGAATGTTCTC
ACCTGGGACCAAAGCCAGCAAATAAACAAAAGCTCAACAAGACTGACCTGGCCAAGCTCTTGATATTCT
ACAAAGACCTGAACCAAAGATCCATCATGGAGAGCCAGCCAACAGTATTGAGATGCTCCTGTCTAACTT
TGGTGGACAGCTCGCCCTGTGGATGAGCTGCTCGGTCTGTGTCATCGAAATCATCGAAGTCTTCTTC
ATTGATTTCTTCTATTATTGCCCGCCCGCAGTGGCAGAAAGCCAAGGATTGGTGGCCCGTAGGCCGA
CACCACCCTCCACTGAGACTCCCTCCAGCCAGCAGGGTCAAGATAATCCAGCCCTGGATACGGACGATGA
TCTGCCCACTTTTACCTCTGCTATGCGCCTGCCTCCAGCCCCGGAGGCTCCGGTGCCTGGCACACCAACC
CCCAGATAACAATACCTTGCCTTGGACAGTGCCTTTCTCCAGCTCACAGACACTCAGTTGACCAATG
AGTTC

ACGCGTACGCGGCCGCTCGAG - GFP Tag - GTTTAA

Protein Sequence: >MG209793 representing NM_011326
 Red=Cloning site Green=Tags(s)

MAPGEKIKAKIKKLNLPVRGPQAPTIKDLMHWYCLNTNTHGCRRIVVSRRGLRRLWIAFTLTAVALIIWQ
 CALLVFSFYTVSVSIKVHFQKLDPAVTCININPYKYSVSDLLTDLSETKQALLSLYGKVDVLDSTPR
 KRREAGSMRSTWEGTPPRFLNLIPLLVFNENEKGDFFTGRRKISGKIIHKASNMHVHESKLLVGF
 QLCSNDTSDCATYTFSSGINAIQEWYKLYHMNIMAQVPLEKKINMSYSAEELLVTCFFDGMSCDARNFTL
 FHHPMYGNCYTFNNRENATILSTSMGGSEYGLQVILYINDEYNPFLVSSTGAKVLVHQQNEYPFIEDVG
 TEIETAMSTSIGMHLTESFKLSEPYEQCTEDGSDVPVTNIYNAAYSLQICLYSCFQTKMVEKCGCAQYSQ
 PLPPAANYCNYQQHPNWMYCYQLYQAFVREELGCQSVCKQSCSFKEWTLTSLAQWPSEASEKWLLNVL
 TWDQSQQINKKLNKTDLAKLLIFYKDLNQRSIMESPANSIEMLLSNFGGQLGLWMSCSVVCVIEIEVFF
 IDFFSIIARRQWQAKDWWARRRTPPSTETPSSQQQDNPALDTPFTSAMRLPPAPEAPVPGTTP
 PRYNTLRLLDSAFSSQLTDTQLTNEF

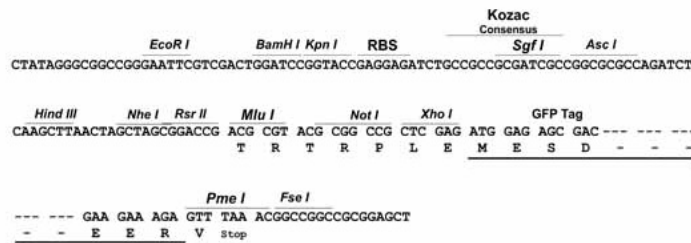
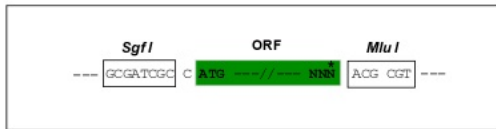
TRTRPLE - GFP Tag - V

Restriction Sites:

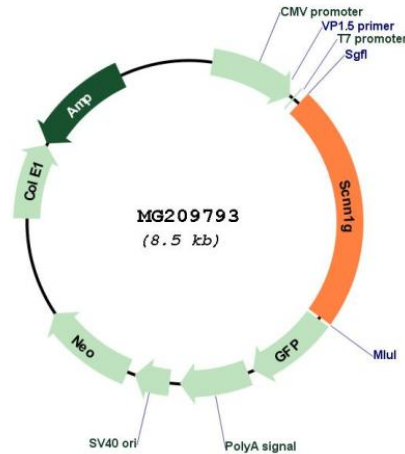
SgfI-MluI

Cloning Scheme:

Cloning sites used for ORF Shuttling:



Plasmid Map:



ACCN: NM_011326

ORF Size: 1965 bp

OTI Disclaimer: The molecular sequence of this clone aligns with the gene accession number as a point of reference only. However, individual transcript sequences of the same gene can differ through naturally occurring variations (e.g. polymorphisms), each with its own valid existence. This clone is substantially in agreement with the reference, but a complete review of all prevailing variants is recommended prior to use. [More info](#)

OTI Annotation: This clone was engineered to express the complete ORF with an expression tag. Expression varies depending on the nature of the gene.

Components: The ORF clone is ion-exchange column purified and shipped in a 2D barcoded Matrix tube containing 10ug of transfection-ready, dried plasmid DNA (reconstitute with 100 ul of water).

Reconstitution Method:

1. Centrifuge at 5,000xg for 5min.
2. Carefully open the tube and add 100ul of sterile water to dissolve the DNA.
3. Close the tube and incubate for 10 minutes at room temperature.
4. Briefly vortex the tube and then do a quick spin (less than 5000xg) to concentrate the liquid at the bottom.
5. Store the suspended plasmid at -20°C. The DNA is stable for at least one year from date of shipping when stored at -20°C.

RefSeq: [NM_011326.3](#)

RefSeq Size: 2965 bp

RefSeq ORF: 1968 bp

Locus ID: 20278

UniProt ID: [Q9WU39](#)

Cytogenetics: 7 65.07 cM

Gene Summary: This gene encodes the gamma subunit of the epithelial sodium channel, a member of the amiloride-sensitive sodium channel family of proteins. This channel regulates sodium homeostasis and blood pressure, by controlling sodium transport in the kidney, colon and lung. Proteolytic processing of the encoded protein results in the release of an inhibitory peptide and channel activation. Homozygous knockout mice for this gene exhibit perinatal lethality, likely due to excess serum potassium. [provided by RefSeq, Oct 2015]