

Product datasheet for **MG209792**

Aplp1 (NM_007467) Mouse Tagged ORF Clone

Product data:

Product Type:	Expression Plasmids
Product Name:	Aplp1 (NM_007467) Mouse Tagged ORF Clone
Tag:	TurboGFP
Symbol:	Aplp1
Mammalian Cell Selection:	Neomycin
Vector:	pCMV6-AC-GFP (PS100010)
E. coli Selection:	Ampicillin (100 ug/mL)



[View online »](#)

ORF Nucleotide Sequence:

>MG209792 representing NM_007467
 Red=Cloning site Blue=ORF Green=Tags(s)

TTTTGTAATACGACTCACTATAGGGCGGCCGGGAATTCGTCGACTGGATCCGGTACCGAGGAGATCTGCC
 GCC**GCGATCGCC**

ATGGGGCCACCAGCCCCGCGCTCGGGTTCAGGGTTCGCGCTGGCGACCGCCGCTGCCGCTGTTGC
 TGCCACTGTCATTGCTGCTTCTGCGCGCGCAGCTCGCCGTCGGAACCTGGCTGTTGGGAGCCCCAGCGC
 GGCCGAGGCTCCGGGTTCGGCTCAAGTGGCTGGACTATGTGGCGCTTAACCCCTCACCGGGACCTGCGC
 ACCGGCCGCTGGGAACCAGACCCACAGCGATCACGACGCTGTCTTCTGGACCCGACGCGCTGCTGGAGT
 ACTGCAGACAGATGTACCCCGAGCTGCACATAGCACGCTGGAGCAGGCTGCACAGGCCATCCCGATGGA
 GCGCTGGTGTGGGGTACCCGAGTGGCAGATGCGCCACCCCAACCATGAGGTTGTGCCCTTCCATTGC
 CTGCTGGCGAATTCGTGAGTGAAGCCCTGCTAGTCCCGAAGGCTGTCGGTTCCTGCACCAGGAGCGTA
 TGGACCAGTGTGAGATTCAACCAGGAGGCATCAGGAGGCTCAGGAGGCTGCAGCTCTCAGGGCCAT
 CCTGCATGGCTCTGGCATGCTTTTGCCTGTGGCTCTGATCGGTTCCGAGGTGTGGAGTATGTATGCTGT
 CCACCTCTGCAACTCCCAACCCATCTGGGATGGCAGCTGGTACCCCTCTACCCGGTCTGGCCCTGG
 GGGCAGAGCAGAGGGAGGTGAGGATGAAGAGGAGGTGGAATCTTCCCTCAGCCAGTAGACGATTACTT
 CGTAGAGCCCCCTCAGGCTGAAGAAGAAGAGGAAGAGGAGGAAGAAGGGCCCCACCTCCAGCTCCAC
 ACCCTGTGATGGTTAGCAGAGTCACTCCACCCCAAGGCTACTGATGGTGTGGATGTTTACTTTGGCA
 TGCTGGGGAAATCGGCGAGCATGAGGGTTTCTGAGGGCCAAGTGGACCTGGAGGAGCGTAGGATGCG
 CCAGATTAATGAGGTGATGCGTGAATGGCCATGGCTGACAGCCAATCTAAGAACCTGCCAAAGGCGGAC
 AGGCAGGCCCTGAATGAGCACTTCCAGTCCATTCTGCAGACCTGGAAGAACAAGTGTCTGGTGAACGGC
 AACGCTGGTGGAGACCCACGCCACAGAGTCACTGCTGATCAACGACCGCCGAGCAGCCCTGGA
 AGGTTTCTGGCAGCCTTACAGGGCGATCCGCCTCAGGCTGAGCGAGTTCTGATGGCCCTGAGGCGTAC
 CTGCGCGCCGAGCAGAAAGAGCAGAGGCACACTCTGAGGCACTACCAGCACGTTGGCCGAGTGGATCCTG
 AGAAGGCCAGCAGATGCGCTTTCAGGTCCAGACCCACCTTCCAGGTGATCGAAGAGCGAATGAATCAGAG
 CCTGGGGTCTCGACCAGAACCCTCACCTGGCTCAGGAGCTGCGGCCACAGATCCAGGAGCTTCTCCTT
 GCTGAACACTTGGGTCCCAGTGAAGTGGACGCTCTGTGCCCGGAGCAGCAGTGGACAAAGGTAGCC
 TCCAGCCTCCCGAATCCAAGGACGATCCCCAGTACCCTTCCAAAAGGGTCCACAGATCAAGATCATC
 CTCCTCTGGGAGAGAGAAGCTAACTCCACTGGAGCAGTATGAGCAAAAGGTGAATGCATCCGCCCGAGG
 GGGTTTCCCTTCCACTCGTCAGATATCCAGCGGATGAACTGGCTCCTTCCGGGACTGGAGTGTCCCGAG
 AGGCCTTGTGAGTCTGCTGATCATGGGAGCTGGAGGAGGCTCCCTCATTGCTCTATCCTTGTCTTCT
 GCGCAAGAAGAAACCCTATGGGACTATCAGCCATGGAGTGGTGGAGGTGGACCCATGCTGACCCTGGAG
 GAGCAGAGCTCCGGAACTTCAGAGGCATGGCTATGAGAACCCACCTACCGCTTCTGGAAGAACGAC
 CT

AG**CGGACCG**ACGCGTACGCGGCCGCTCGAG - GFP Tag - GTTTAA

Protein Sequence: >MG209792 representing NM_007467
 Red=Cloning site Green=Tags(s)

```

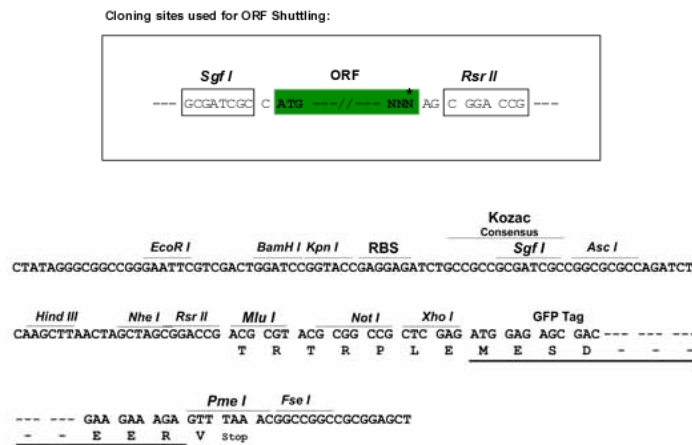
MGPTSPAARGQGRWRPPPLPLLLPLSLLLRAQLAVGNLAVGSPSAAEAPGSAQVAGLCGRLTLHRDLR
TGRWEPDPQRSRRCLLDPQRVLEYCRQMYPELHIARVEQAAQAIPMERWCGGTRSGRCAHPHHEVVPFHC
LPGEFVSEALLVPEGCRFLHQERMDQCESSTRRHQEAQEACSSQGLILHGSGMLLPCGSDRFRGVEYVCC
PPPATPNPSGMAAGDPSTRSWPLGGRAEGGEDEEEVESFPQPVDYFVEPPPQAEAAAAAAAAAERAPPSSH
TPVMVSRVTPRPTDGDVDFYFGMPGEIGEHEGFLRAKMDLEERRMRQINEVMREWAMADSQSKNLPKAD
RQALNEHFQSILQTLQEEQVSGERQLVETHATRIVIALINDQRRAALEGFLAALQGDPPQAERVLMLRRY
LRAEQKEQRHLRHYQHVAAVDPEKAQQMRQVQVTHLQVIEERMNQLGLLDQNPHLAQELRPQIQELLL
AEHLGPSELDASVPGSSSEDKGSLQPPEKDDPPVTLKPGSTDQESSSSGREKLTPLEQYEQKVNASAPR
GFPFHSSDIQRDELAPSGTGVSRREALSGLLIMGAGGSLIVLSLLLRRKKPYGTISHGVVEVDPMLTLE
EQLRELQRHGYENPTYRFLEERP
  
```

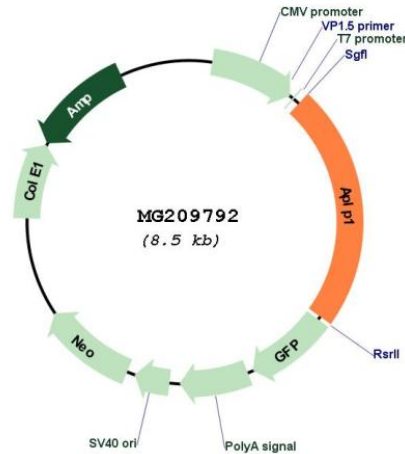
SGP TRRRLE - GFP Tag - V

Restriction Sites:

SgfI-RsrII

Cloning Scheme:



Plasmid Map:


ACCN: NM_007467

ORF Size: 1962 bp

OTI Disclaimer: The molecular sequence of this clone aligns with the gene accession number as a point of reference only. However, individual transcript sequences of the same gene can differ through naturally occurring variations (e.g. polymorphisms), each with its own valid existence. This clone is substantially in agreement with the reference, but a complete review of all prevailing variants is recommended prior to use. [More info](#)

OTI Annotation: This clone was engineered to express the complete ORF with an expression tag. Expression varies depending on the nature of the gene.

Components: The ORF clone is ion-exchange column purified and shipped in a 2D barcoded Matrix tube containing 10ug of transfection-ready, dried plasmid DNA (reconstitute with 100 ul of water).

Reconstitution Method:

1. Centrifuge at 5,000xg for 5min.
2. Carefully open the tube and add 100ul of sterile water to dissolve the DNA.
3. Close the tube and incubate for 10 minutes at room temperature.
4. Briefly vortex the tube and then do a quick spin (less than 5000xg) to concentrate the liquid at the bottom.
5. Store the suspended plasmid at -20°C. The DNA is stable for at least one year from date of shipping when stored at -20°C.

RefSeq:	<u>NM_007467.3</u>
RefSeq Size:	2389 bp
RefSeq ORF:	1965 bp
Locus ID:	11803
UniProt ID:	<u>Q03157</u>
Cytogenetics:	7 18.32 cM
Gene Summary:	May play a role in postsynaptic function. The C-terminal gamma-secretase processed fragment, ALID1, activates transcription activation through APBB1 (Fe65) binding. Couples to JIP signal transduction through C-terminal binding. May interact with cellular G-protein signaling pathways. Can regulate neurite outgrowth through binding to components of the extracellular matrix such as heparin and collagen I.[UniProtKB/Swiss-Prot Function]