

Product datasheet for **MG209779**

Dars2 (NM_172644) Mouse Tagged ORF Clone

Product data:

Product Type:	Expression Plasmids
Product Name:	Dars2 (NM_172644) Mouse Tagged ORF Clone
Tag:	TurboGFP
Symbol:	Dars2
Synonyms:	5830468K18Rik; aspRS
Mammalian Cell Selection:	Neomycin
Vector:	pCMV6-AC-GFP (PS100010)
E. coli Selection:	Ampicillin (100 ug/mL)



[View online »](#)

ORF Nucleotide Sequence:

>MG209779 representing NM_172644
 Red=Cloning site Blue=ORF Green=Tags(s)

TTTTGTAATACGACTCACTATAGGGCGGCCGGAATTCGTCGACTGGATCCGGTACCGAGGAGATCTGCC
 GCC**CGCATCGCC**

ATGTATCTTGGTTTTTGGTTAAGTCGTCTATGCAGGGTTTATCCAGACCCATCGGGAAGACCATGCGGC
 CAATCTGGGGTTCTTTCCAGAAATCTGGCGTTGAGTTCACAAAGAATTCCAGAATTCAGTAGCTTTGT
 TGCTCGGACCAACACATGTGGAGAGTTGCGTTCGTCCTTAGGCCAAGAAGTCACTCTGTGTGGATGG
 GTTCAGTACCGCAGGCAGAACACCTTCTTAGTCCTAAGAGATTGCCACGGCCTTGTTCAGATTCTCATT
 CCCAGGATGAGTCAGCCGCATCTGTGAGGGGATTTTGTGTGAAGCCCTGTGGAGTCTGTGGTGAAGT
 ATCTGGGACAGTAATCTCCGCTCTCCAGGACAAGAGAATCCGAAAATGCCGACGGGTGAGATTGAAATC
 AAAGTTAAACAGCTGAGCTCCTGAATGCCTGCAAAAAGCTGCCCTTTGAGATTAAGACTTTGTGAAGA
 AAACAGAGGCGCTCCGTTTGCAGTATCGCTACTTAGATCTGCCAGCTTCCAGATGCAGTACAATTGCG
 GCTGAGGTGCGAGATGGTCATGAAAATGCGGGAATATCTCTGTAATCTGCACGGGTTTGTGGATATAGAA
 ACCCCAACCTTGTTAAGAGGACCCCTGGAGGTGCCAAGGAGTTTTTGTAGTACCATCCAGGGAACCTGGAA
 AGTTTTATTCCCTCCCTCAAAGTCTCAGCAATTTAAGCAGCTTCTGATGGTTGGAGGTTTAGACAGGTA
 TTTTCAGTGCCTCGGTGTACCAGATGAAGGCTCAAGACCCGATAGACAGCCAGAGTTCACTCAGATT
 GACATAGAGATGCTCTTTGTAGAGCAGACTGGCATTACAGCGTTTGTGGAGGTTTGTGTCAGTATTCT
 GGCCTGGTGATAAAGACCCTCTAGTGACTCCTTTCCCTCCATGACTTTTGTGAGGCACTGGCCACCTA
 TGGAACTGATAAGCCAGATACTCGCTTTGGGATGAAGATTGTGGATGTCAGTGTGTTCAGAAACACA
 GAGCTCAGATTCCTTCCAGATGCAGTGGCTAAGCCCAAGGAAGTCAAAGCAATATGTGTTTCATGACG
 GAGCGAAATACTTAAGGAAGGAAGACATTGAGTTCATTAGGAAGTTTGCAGTTCACCAATTCAGTCAGGA
 AGTCTACCTATATTCTGAATGCCAAGAAGAAGTGGAGTTCGCCATTTGCTAAGTTTCAATATGGAGGAG
 GAAAGACTGGAATTGGCCAGATCGATGGAGATACAAGAAGAAGACATAGTGTACTGACTGCTGGGGAAC
 ATGAGAAAGCATGCTCTCTGTTGGGAAAGTTACGGCTAGAGTGTGCAGACCTTTTGGAGATGAGAGGAGC
 GGTGCTCCGAGACCCAGCAGTGTCTCTTTTCTTTGGGTGGTTGACTTTCCACTCTTCTTGCCAAGGAA
 GAGAGTCCACAGAGCTGGAGTCAGCCATCACCCATTTACTGCTCCTAACTCCAGTGCATTACCTCC
 TCTATACTGAGCCGAAAAGGTTCTGGCCAACACTATGACTTGGTTTTAAACGGCAATGAGATAGGAGG
 TGGTTCTGCCGAATCCATGATGCACAGCTACAGAGGTACATCCTGGAACACTGCTAAAGGAAGATGTG
 AAATTGCTTTCCATCTGCTTCCAGCTTTAGACTATGGGGCACCCACACGGAGGAATTGCCTTAGGGT
 TAGACAGACTGGTATGTCTTGTACGGGAGCACCCAGCATCAGAGATGTCATAGCCTTCCCTAAATCCTA
 CCGAGGACAGGACCTTATGAGCAATGCTCCAGACTCCGTGTCTCCAGAAGAGCTGAAGCCTTACCATATC
 CAGTCTTGTGGCCAGCAGACTCAGAAGAGGAGAGTGCATCCGCCACACCTTCCAAACACTTGAGCTCT

ACGCGTACGCGGCCGCTCGAG - GFP Tag - GTTTAA

Protein Sequence:

>MG209779 representing NM_172644
 Red=Cloning site Green=Tags(s)

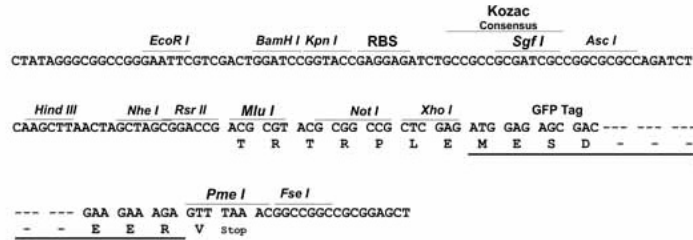
MYLGFWLSRLCRGLSRPIGKTMRPDIWGSLSRNLALSSQRIPEFSSFVARTNTCGELRSSHLGQEVTLCGW
 VQYRRQNTFLVLRDCHGLVQILIPQDESAASVRGILCEAPVESVVRVSGTVISRPPGQENPKMPTGEIEI
 KVKTAELLNACKKLPFEIKDFVKKTEALRLQYRYLDLRSFQMQYNLRLRSQMVMKMREYLCNLHGFVDIE
 TPTLFKRTPGGAKEFLVPSREPGKFYSLPQSPQQFKQLLMVGGLDYFQVRCYRDEGSRPDRQPEFTQI
 DIEMSFVEQTGIQRLVEGLLQYWPQDKDPLVTPFPSTFAEALATYGTDPDRFGMKIVDVSDFVRNT
 ELRFLQDALAKPQGTVKAICVHDGAKYLRKEDIEFIRKFAVHHFSQEVLPFLNKKNNWSSPFAKFIEMEE
 ERLELARSMEIQEEDIVLLTAGEHEKACSLGKLRLECADLLEMRGAVLRDPAVFSFLWVDFPLFLAKE
 ESPTLESAHHPFTAPNSSDIHLLYTEPEKVRGQHYDLVINGNEIGGGSARIHDAQLQRYILETLKEDV
 KLLSHLLQALDYGAPPHGGIALGLDRLVCLVTGAPSIKDVIAFPKSYRGQDLMSNAPDSVSPEELKPYHI
 HVLWPADEEESASATPSKHLSS

TRTRPLE - GFP Tag - V

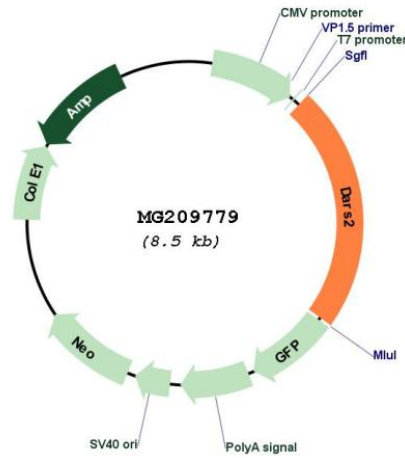
Restriction Sites: SgfI-MluI

Cloning Scheme:

Cloning sites used for ORF Shutting:



Plasmid Map:



ACCN: NM_172644

ORF Size: 1959 bp

OTI Disclaimer:	The molecular sequence of this clone aligns with the gene accession number as a point of reference only. However, individual transcript sequences of the same gene can differ through naturally occurring variations (e.g. polymorphisms), each with its own valid existence. This clone is substantially in agreement with the reference, but a complete review of all prevailing variants is recommended prior to use. More info
OTI Annotation:	This clone was engineered to express the complete ORF with an expression tag. Expression varies depending on the nature of the gene.
Components:	The ORF clone is ion-exchange column purified and shipped in a 2D barcoded Matrix tube containing 10ug of transfection-ready, dried plasmid DNA (reconstitute with 100 ul of water).
Reconstitution Method:	<ol style="list-style-type: none"> 1. Centrifuge at 5,000xg for 5min. 2. Carefully open the tube and add 100ul of sterile water to dissolve the DNA. 3. Close the tube and incubate for 10 minutes at room temperature. 4. Briefly vortex the tube and then do a quick spin (less than 5000xg) to concentrate the liquid at the bottom. 5. Store the suspended plasmid at -20°C. The DNA is stable for at least one year from date of shipping when stored at -20°C.
RefSeq:	NM_172644.2 , NP_766232.1
RefSeq Size:	3582 bp
RefSeq ORF:	1962 bp
Locus ID:	226539
UniProt ID:	Q8BIPO
Cytogenetics:	1 H2.1