

Product datasheet for **MG209768**

Rnpep (NM_145417) Mouse Tagged ORF Clone

Product data:

Product Type:	Expression Plasmids
Product Name:	Rnpep (NM_145417) Mouse Tagged ORF Clone
Tag:	TurboGFP
Symbol:	Rnpep
Synonyms:	MGC29229
Mammalian Cell Selection:	Neomycin
Vector:	pCMV6-AC-GFP (PS100010)
E. coli Selection:	Ampicillin (100 ug/mL)



[View online »](#)

ORF Nucleotide Sequence:

>MG209768 representing NM_145417
 Red=Cloning site Blue=ORF Green=Tags(s)

TTTTGTAATACGACTCACTATAGGGCGGCCGGGAATTCGTCGACTGGATCCGGTACCGAGGAGATCTGCC
 GCC**CGGATCGCC**

ATGGAGAGCGCGGACCAGGCAACTACAGCGGGCCGCCCGCGGCCACTGCACTCGGCCAAGCCGTGG
 ACGTGGCCTCGGCTCCAGCTTCCGCGCCTTCGAGATCCTGCACCTGCACCTGGACCTGCGGGCCGAGTT
 CGGGCCTCCGGGCCGGGTCCGGGAAGCCGCGGATTGAGCGGCACGGCGACGCTGGAGCTGCGTTGTTTG
 CTTCCCGAGGGCGCTCGGAGCTCGGGCTCGACTCGCACAGCTGCTTGGAGGTGACGGCGGCGACGCTGC
 GACGGGGACAGCCGGGAGACCAGCAGGCCCGGCAGAGCCGTGCCTTTCCACACACAGCCCTTCTCGCA
 CTATGGCCAGGCCCTGTGCGTGGCCTTCCCGCAGCCCTGCGGTGCCGCCGATCGTTGAGCTGGAGCTC
 ACCTACCGCGTCGGGGAGGGACCCGGGTTTGTGTTGGCTCCTGAGCAGACAGCAGGAAAGAAGAAAC
 CCTTTGTCTATACCCAGGGTCAGGCGGTCTTAACCGAGCCTTTTCCCTTGCTTTGACACTCCAGCAGT
 GAAATGCACGTATTCGGCTCTTATTGAGGTTCCAGATGGCTTCCAGCTGTGATGAGTGCAGACACCTGG
 GAGAAGAGAGGACCAAATAAGTTCTTCCAGATGAGCCATCCCATCCCTCCTATCTGATAGCTTTGG
 CCATTGGAGATCTGGCTTCACTGAGGTTGGACCCAGGAGCCGGGTGTGGGCGGAGCCCTGCCTGATTGA
 AGCTGCCAAGGAGGAATACAGTGGGGTCATAGAAGAATTTCTGGCAACAGGAGAGAAGCTTTTCCGACCC
 TATGTTTGGGGAAGGTATGACTTGTCTTTATGCCACCGTCTTTCCATTTGGAGGAATGGAAAAATCCTT
 GCCTGACCTTTGTCACTCCGTGCCTGCTAGCAGGGGACCCTCGTTAGCCGACGTCATCATCCATGAGAT
 CTCCACAGTTGGTTTGGGAACCTGGTCACCAATGCCAAGTGGGGGAGTTCTGGCTCAATGAAGGCTTC
 ACCATGTATGCCAGAGGAGGATCTCCACCATCTGTTTGGAGCTGCTTACACTTGTCTGGAGGCTGCCA
 CAGGGAGGGCTCTGCTGCGTCAGCACATGAATGTCTCCGGAGAGGAAAACCCACTCAACAAGCTCCGGGT
 GAAGATTGAACCAAGGTGGACCCGATGACACCTACAATGAGACCCCTACGAGAAAGTTACTGCTTT
 GTCTCATACCTGGCCACCTGGTGGGTGATCAGGATCAGTTTGACAAGTTTCTCAAGGCCTATGTAGATG
 AGTTTAAATTCAAAGTATCTTGGCTGAAGACTTTCTGGAATTCTACCTGGAGTATTTCCCTGAGTTGAA
 GAAGAAGGGAGTAGATCCATTCAGGTTTTGAGTTTGTGATCGATGGCTGAACACCCCTGGATGGCCCCC
 TACCTCCCGACCTCTCCCTGGGGACTCACTCATGAAGCCAGCTGAAGAGCTGGCAGAAGTGTGGGTGA
 CCTCAGAGCCAGACATGCAAGCCATTGAAGCCGTGGCCATCTCTACCTGGAAGACCTACCAGCTTGCTA
 CTTCTAGATAAGATCTGCAGAAGTCTCTCTCCCTCCTGGGAATGTGAAAAAACTTGGGAGACATAC
 CCAAAGATTTCCAATGCTCAGAATGCTGAGTTACGGCTAAGATGGGGCCAATCATCCTTAAAGATGACT
 ACCAAGAGGAATTCAGAAAGTGAAGGACTTCTGCAGAGCCAGGGAAAGCAGAAGTACACTCTGCCTCT
 GTACCACGCCATGATGGGTGGCAGTGAAGTGGCCCGGACCTGGCCAAGGACACCTTTGCCGCCACTGCT
 TCCAGCTCCACAGCAACGTCGTAACCTATGTCCAGCAGATCCTGGCGCCCAAGGACAGT

ACGCGTACGCGGGCCGCTCGAG – GFP Tag – GTTTAA

Protein Sequence:

>MG209768 representing NM_145417
 Red=Cloning site Green=Tags(s)

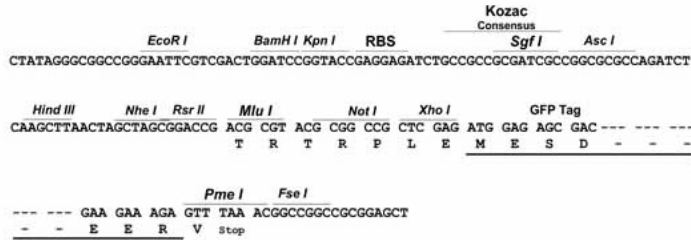
MESGGPGNYSGAARRPLHSAQAVDVAASSSFRAFEILHLHLDLRAEFGPPGPGPSRGLSGTATLELRLCL
 LPEGASELRDLSHCLEVTAATLRRGQPGDQQAPEVPFHTQPF SHYQALCVAFPQPCGAADRFEL
 TYRVGEGPGVCWLAPEQTAGKKKPFVYTGQAVLNRAFFPCFDTPAVKCTYSALIEVPDGF TAVMSADTW
 EKRGPNKFFFQMSHPIPSYLI ALAIGDLASAIEVGP RSRVWAEPCLIEAAKEEYSGVIEEF L ATGEKLF
 GP YWGRYDLLFMPPSFPFGGMENPCLTFVTPCLLAGDRSLADVI IHEI SHSWFGNLVTNANWGEFWLNEGF
 TMYAQRRI STILFGAAYTCL EAATGRALLRQH MNVSGEENPLNKL RVKIEPGVDPDDTYNETPYEKGYCF
 VSYLAHLVGDQDQDFDKFLKAYVDEFKFSIL AEDFLEFYFPELKKKGVD SIPGFEFDRWL NTPGWPP
 YLPDLSPGDSLMKPAEELAE LWVTSEPD MQAIEA VAISTWKTYQLVYFLDKILQK SPLPPGNVKKLGETY
 PKISNAQNAELRLRWGQIILKNDYQEEFQKVKDFLQSQGKQKYLPLYHAMMGSEMARTLAKDTFAATA
 SQLHSNVVNYVQQILAPKDS

TRTRPLE – GFP Tag – V

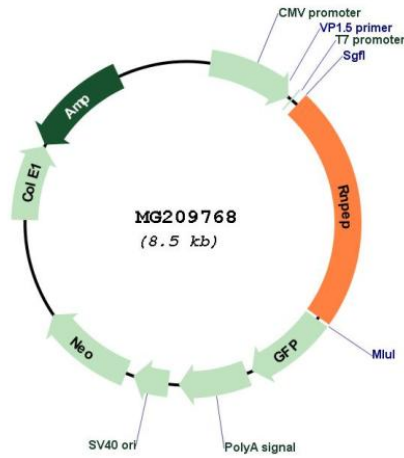
Restriction Sites: SgfI-MluI

Cloning Scheme:

Cloning sites used for ORF Shutting:



Plasmid Map:



ACCN: NM_145417

ORF Size: 1950 bp

OTI Disclaimer:	The molecular sequence of this clone aligns with the gene accession number as a point of reference only. However, individual transcript sequences of the same gene can differ through naturally occurring variations (e.g. polymorphisms), each with its own valid existence. This clone is substantially in agreement with the reference, but a complete review of all prevailing variants is recommended prior to use. More info
OTI Annotation:	This clone was engineered to express the complete ORF with an expression tag. Expression varies depending on the nature of the gene.
Components:	The ORF clone is ion-exchange column purified and shipped in a 2D barcoded Matrix tube containing 10ug of transfection-ready, dried plasmid DNA (reconstitute with 100 ul of water).
Reconstitution Method:	<ol style="list-style-type: none"> 1. Centrifuge at 5,000xg for 5min. 2. Carefully open the tube and add 100ul of sterile water to dissolve the DNA. 3. Close the tube and incubate for 10 minutes at room temperature. 4. Briefly vortex the tube and then do a quick spin (less than 5000xg) to concentrate the liquid at the bottom. 5. Store the suspended plasmid at -20°C. The DNA is stable for at least one year from date of shipping when stored at -20°C.
RefSeq:	NM_145417.2
RefSeq Size:	2275 bp
RefSeq ORF:	1953 bp
Locus ID:	215615
UniProt ID:	Q8VCT3
Cytogenetics:	1 E4
Gene Summary:	Exopeptidase which selectively removes arginine and/or lysine residues from the N-terminus of several peptide substrates including Arg(0)-Leu-enkephalin, Arg(0)-Met-enkephalin and Arg(-1)-Lys(0)-somatostatin-14. Can hydrolyze leukotriene A4 (LTA-4) into leukotriene B4 (LTB-4) (By similarity).[UniProtKB/Swiss-Prot Function]