

Product datasheet for **MG209766**

Ghr (BC075720) Mouse Tagged ORF Clone

Product data:

Product Type:	Expression Plasmids
Product Name:	Ghr (BC075720) Mouse Tagged ORF Clone
Tag:	TurboGFP
Symbol:	Ghr
Synonyms:	GHBP, GHR/BP
Mammalian Cell Selection:	Neomycin
Vector:	pCMV6-AC-GFP (PS100010)
E. coli Selection:	Ampicillin (100 ug/mL)



[View online »](#)

ORF Nucleotide Sequence:

>MG209766 representing BC075720
 Red=Cloning site Blue=ORF Green=Tags(s)

TTTTGTAATACGACTCACTATAGGGCGGCCGGAATTCGTCGACTGGATCCGGTACCGAGGAGATCTGCC
 GCC**CGCATCGCC**

ATGGATCTTTGTCAGGTCTTCTTAACCTTGGCACTGGCAGTCACCAGCAGCACATTTTCTGGAAGTGAAG
 CTACACCAGCTACTCTTGGCAAAGCTTCCCCAGTTCTGCAAAGAATCAATCCAAGCCTGGGACAAAGTTC
 TTCTGGGAAGCCTCGATTACCAAGTGTGCTTCCCTGAACTGGAGACATTTTTCATGCTACTGGACAGAA
 GGAGATAATCCTGATTTAAAGACCCAGGATCTATTAGCTGTACTATGCTAAAAGGGAAAGCCAACGAC
 AAGCTGCAAGAATTGCTCATGAATGGACCCAGGAATGAAAGAATGCCCTGATTATGCTCTGCTGGAAA
 AAACAGCTGTTACTTCAACTCATATACCTCCATTTGGATACCTACTGCATCAAGCTAACTACAAT
 GGTGATTTGCTGGACAAAAATGTTTCACTGTTGACGAAATAGTGAACCTGATCCACCCATTGGCCTCA
 ACTGGACTTTACTAAACATTAGTTTACCGGGATTCTGGAGACATCCAAGTGAGTTGGCAACCACCACC
 CAATGCAGATGTTCTGAAGGGATGGATAATTCTGGAGTATGAAATTCAGTACAAAGAAGTAAATGAATCA
 AAATGAAAGTATGGGCCCTATATGGTTAACATACTGTCCAGTGTACTATTGAGAATGGATAAAGAAC
 ATGAAGTGCAGGATCCAGACAACGGAGCTTTGAAAAGTACAGCGAGTTCAGCGAAGTCCCTCCGTGT
 AATATTTCCCTCAGACGAACATATTGGAAGCATGTGAAGAAGATATCCAGTTTCCATGGTTCTTAATTATT
 ATCTTTGGAAATTTGGAGTAGCAGTGTGCTATTTGTAGTTATATTTTCAAAGCAGCAAAGGATTAAGA
 TGCTGATTTTACCCAGTCCCAGTTCCAAAGATTAAGGGATTGATCCAGATCTTCTCAAGGAAGGGAA
 GTTGGAGGAGGTGAACACCATCTTAGGCATTATGATAACTACAAACCCGACTTCTACAATGATGATTCC
 TGGGTCGAGTTCATTGAGCTAGATATTGATGAAGCAGATGTGGATGAGAAGACTGAAGGGTCTGACACAG
 ACAGACTTCTAAGCAATGATCATGAGAAATCAGCTGGTATCCTTGGAGCAAAGGATGATGATTTGGGCG
 TACCAGCTGTTACGACCCTGACATTTTGGATACTGATTTCCATACCAGTGACATGTGTGATGGTACCTTG
 AAGTTTGCTCAGTCACAGAAGTTAAATATGGAAGCTGATCTCTTGTGCCTTGATCAGAAGAATCTGAAGA
 ACTTGCCTTATGATGCTTCCCTGGCTCTCTGCATCCCTCCATTACCCAGACAGTAGAAGAAAACAAGCC
 ACAGCCACTTTTGGAGCAGGAACTGAGGCAACCCACCAACTCGCTCTACACCGATGAGTAATCCACACA
 TCACTGGCAAACATTGACTTTTTATGCCAAGTAAGCGACATTACACCAGCAGGTGGTGTAGTCTTTCCC
 CAGGCCAAAAGATTAAGGCAGGGATAGCCCAAGGCAATACCCAGCGGGAGGTGGCCACGCCCTGCCAAGA
 AAATTACAGCATGAACAGTGCCTACTTTTGTGAGTCAGATGCCAAAAATGCATCGTGTGGCCCTCGC
 ATGGAAGCCACGTCTTGTATAAAACCAAGCTTTAACCAAGAGGACATTTACATCACCACAGAAAGCCTTA
 CCACTACTGCCAGATGTCTGAGACAGCAGATATTGCTCCAGATGCTGAGATGTCTGCCAGACTACAC
 CACGGTTCACACCGTGCAGTCTCCAAGGGCCTATACTCAACGCAACTGCTTTGCCTTTGCCTGACAAA
 AAGAATTTTCCCTCCTCGTGTGTTATGTGAGCACAGACCAACTGAACAAAATCATGCAG

ACGCGTACGCGGCCGCTCGAG - GFP Tag - GTTTAA

Protein Sequence:

>MG209766 representing BC075720
 Red=Cloning site Green=Tags(s)

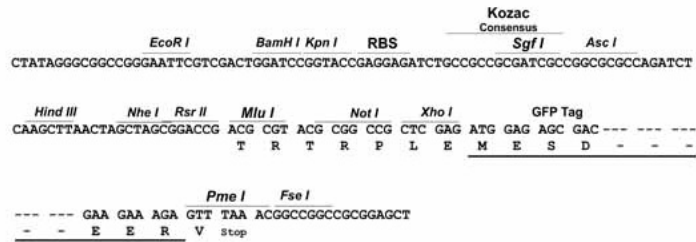
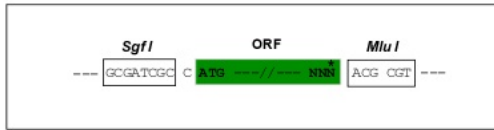
MDLCQVFLTLALAVTSSTFSGSEATPATLGKASPVLQRINPSLGTSSSGKPRFTKCRSPELETFSYWTE
 GDNPDLKTPGSIQLYYAKRESQRQAARIAHEWTQEWKECPDYVSAGKNSCYFNSSYTSIWIPYCIKLTN
 GDLLDQKCFVDEIVQDPPPIGLNWTLLNISLTGIRGDIQVSWQPPPNADVLKGIWILEYEQYKEVNES
 KWKVMGPIWLTYPVYSLRMDKEHEVRVRSRQSFKEYSEFSEVLRVIFPQTNILEACEEDIQFPWFLLII
 IFGIFGVAVMLFVVIFSKQQRKMLILPPVPVKIKGIDPDLLKEGKLEEVNTILGIHDNYKPDFYNDSS
 WVEFIELDIDEADVDEKTEGSDTDRLLSNDHEKSAGILGAKDDSGRTSCYDPDILDTFHTSDMCDGTL
 KFAQSQKLNMEADLLCLDQKNLKNLPYDASLGSHPISITQVVEENKQPPLLSSSETEATHQLASTPMSNPT
 SLANIDFYAQVSDITPAGGVVLSPGQKIKAGIAQNTQREVATPCQENYSMNSAYFCESDAKKCIAVAPR
 MEATSCIKPSFNQEDIYITTESLTTTAQMSSETADIAPDAEMSVDPDYTTVHTVQSPRGLILNATALPLPDK
 KNFPSSCGYVSTDQLNKIMQ

TRTRPLE - GFP Tag - V

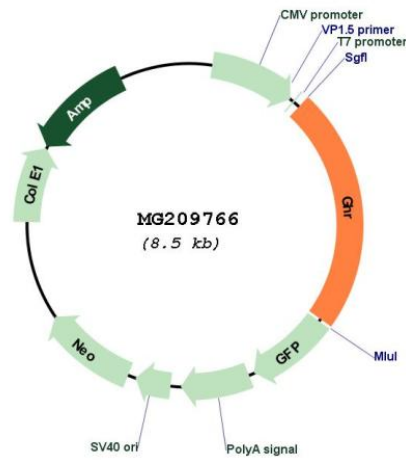
Restriction Sites: SgfI-MluI

Cloning Scheme:

Cloning sites used for ORF Shutting:



Plasmid Map:



ACCN: BC075720

ORF Size: 1952 bp

OTI Disclaimer:	The molecular sequence of this clone aligns with the gene accession number as a point of reference only. However, individual transcript sequences of the same gene can differ through naturally occurring variations (e.g. polymorphisms), each with its own valid existence. This clone is substantially in agreement with the reference, but a complete review of all prevailing variants is recommended prior to use. More info
OTI Annotation:	This clone was engineered to express the complete ORF with an expression tag. Expression varies depending on the nature of the gene.
Components:	The ORF clone is ion-exchange column purified and shipped in a 2D barcoded Matrix tube containing 10ug of transfection-ready, dried plasmid DNA (reconstitute with 100 ul of water).
Reconstitution Method:	<ol style="list-style-type: none">1. Centrifuge at 5,000xg for 5min.2. Carefully open the tube and add 100ul of sterile water to dissolve the DNA.3. Close the tube and incubate for 10 minutes at room temperature.4. Briefly vortex the tube and then do a quick spin (less than 5000xg) to concentrate the liquid at the bottom.5. Store the suspended plasmid at -20°C. The DNA is stable for at least one year from date of shipping when stored at -20°C.
RefSeq:	BC075720 , AAH75720
RefSeq Size:	4180 bp
RefSeq ORF:	1952 bp
Locus ID:	14600
Cytogenetics:	15 1.84 cM
Gene Summary:	Receptor for pituitary gland growth hormone involved in regulating postnatal body growth. On ligand binding, couples to, and activates the JAK2/STAT5 pathway (By similarity). [UniProtKB/Swiss-Prot Function]