

Product datasheet for **MG209763**

Vit (NM_028813) Mouse Tagged ORF Clone

Product data:

| | |
|---------------------------|---|
| Product Type: | Expression Plasmids |
| Product Name: | Vit (NM_028813) Mouse Tagged ORF Clone |
| Tag: | TurboGFP |
| Symbol: | Vit |
| Synonyms: | 1700052E02Rik; 1700110E08Rik; 2810429K11Rik |
| Mammalian Cell Selection: | Neomycin |
| Vector: | pCMV6-AC-GFP (PS100010) |
| E. coli Selection: | Ampicillin (100 ug/mL) |



[View online »](#)

ORF Nucleotide Sequence:

>MG209763 representing NM_028813
 Red=Cloning site Blue=ORF Green=Tags(s)

TTTTGTAATACGACTCACTATAGGGCGGCCGGAATTCGTCGACTGGATCCGGTACCGAGGAGATCTGCC
 GCC**CGCATCGCC**

ATGGGAATTGTTGTTCCCACTATGAAGGCATCTGTTATTGAAGTGTGCTTGTGTTTCTGGTAACTGGAA
 TACATTTCAAATAAAGAAACGCCAAAGAAGACTAAAAGGCCAAACTCACTGTGCCTCAGATCAACTGCGA
 TGTCAAAGCTGGAAGATCATCAATCCTGAGTTCATGGTAAATGTCAGCGGGCTGCCAGGACCCAAA
 TACCATGTTTACGGCACTGGCGTCTACGCGTCTTACTCCAGCGTGTGGCGCCGCAATTCACAGCGGTG
 TGCTGGATAATTCAGGAGGGAAAATACTTGTTCGGAAAGTTGCTGGGCAGTCTGGTTACAAAGGAAGCTA
 CTCGAATGGGGTTCAGTCTTTATCTTTACCCAGATGGCGAGAGTCTTTCATCGTCGAGAAAAGTAAGCCC
 CAAAAGGTGTAGCCTACCCATCGACTCTTACATATTCATCATCGAAAAGTGCAGCTGCTAAAGCAGGTG
 AGACCACAAAAGCCTATGAGAAGCCATCTATTCCAGGGACAACCATACAGCCTGTACCCTGACACAGGC
 TCAAGCTACCCCTGTAGCTGAGGTACCCACAGATCCACCTCAAAGCCATTTGCAGCATCTGTACCAAC
 AGCCCCAGACCCCAACCTGTGGGCCACAGGAGTCAAGGAGTGAAGAGGTGGACGGGTGGAAGCCTGGAC
 CAGTCTTTTAGATTAGGATTTGTGCCAAAAGAAGAACTCAGCACACAGTCTTCGGAGCCAGTGCCGCA
 GGGAGATCCAAACTGCAAATTGACTTGTCTTCTTAATTGATGGGAGCACAGCATCGGCAAGCGCCGC
 TTCCGGATCCAGAAGCAGTTCCTAGCGGACGTCGTCAGGCTCTTGACATCGGCCCTGCCGGTCCCTCG
 TGGGTGTTGTTTACGACGAGACAATCTGCTACCCAGTTAACCTCAAACTCATATGAATTTCTCAAGA
 TCTGAAGACAGCTATAGAGAAAATTACCCAGAGAGGAGGCCTTTCTAATGTAGGCCGTGCCATCTCCTTT
 GTAACCAAGACCTTCTTTTCAAAGCCAATGGGAACAGAGGTGGTCTCCAATGTGGCTGTGGTCATGG
 TGGATGGCTGGCCACAGACAAGGTGGAAGAGGTGTCACGAGTTGCCAGAGAGTCTGGGATCAACGTCCTT
 CTTTCATACCGTGAAGGGGCCCGGAAAGGGACATACAGCATGTGGTGGAGCCCGGTTTTGCCAGCAAG
 GCAGTGTGCAACAACAACGGGTTCTACTCTTCAATGTGACAGAGTGGCTCAGCCTTCACAAAACAGTGC
 AGCCCCTGGTGAAGCGGTCTGCGACACGGACCGCTAGCCTGCAGCAAGACCTGTTAACTCTGCGGA
 CATAGGCTTTGTCATCGATGGGTCTAGCAGCATGGGGACAAGCAACTTCCGCACGGTCTGCAGTTCGTG
 GCCAACCTCAGCAAGGAGTTTGAATTTAGACACCGACACACGCGTGGGGCCGTGCAGTACACCTACG
 AGCAGCGGCTCGAATTTGGTTCGACAAGTATAACAGCAAAGCCGACATCCTCAGTGCCATCAGGAGGT
 GGGTACTGGAGCGGAGGCACCAGCACAGGGGCTGCCATCCAGTATGCCCTCGAACAGCTCTTCAAGAAG
 TCCAAACCGAACAGAGGAAGGTAAATGATCATTACTGACGGCAGGTCTTACGATGACGTGCGGATCC
 CAGCCATGGCTGCCTACCAGAAGGGGTGATCAGTATGCAATAGGCATTGCGTGGGCTGCTCAGGACGA
 GCTGGAGGTAATGGCCACTACCCCGCCAAAGGACCATTCTTCTTTGTGGATGATTTTGACAACCTCTAC
 AAAATTGCCCCAGGATCATCCAGAATATTTGTACAGAGTTCAACTCACAGCCTCGAAAC

AC**GGGCCGCTCGAG** – GFP Tag – GTTTAA

Protein Sequence:

>MG209763 representing NM_028813
 Red=Cloning site Green=Tags(s)

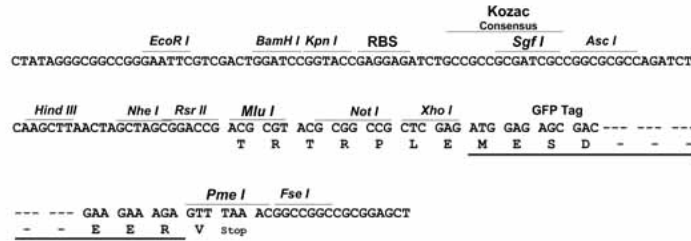
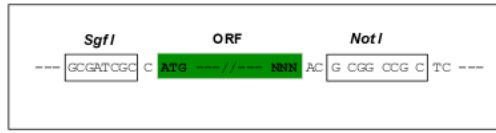
MGIVVPTMKASVIEVLLVLLVTGIHNSKETPKKTRPKLTVPQINCDVKAGKIINPEFMVKCPAGCQDPK
 YHYYGTGVYASYSSVCGAAIHSGVLDNSGGKILVRKVAGQSGYKGSYSNGVQSLSLPRWRESFIVAESKP
 QKGVAYPSTLTYSSKTAATAKAGETTKAYEKPSIPGTTIQPVTLTQAQATPVAEVTHRSTSKPFAASVTN
 SPRPQPVGHRSSQEMEEVDGWKPGPVLLDSGFVPKEELSTQSSEPVPQGDPNCKIDL SFLIDGSTSIGKRR
 FRIQKQFLADVVALDIGPAGPLVGVVQYGDNPATQFNLKTHMNSQDLKTAIEKITQRGGLSNVGRAISF
 VTKTFFSKANGNRGGAPNVAVVMVDGWPTDKVEEVSRAVRESGINVFFITVEGAAERDIQHVVEPGFASK
 AVCRTNGFYSFNVQSWLSLHKTVQPLVKRVCDDRLACSKTCLNSADIGFVIDGSSSMGTSNFRTVLQFV
 ANLSKEFEISDTRVGAQYTYEQRLFQFDKYNKADILSAIRRVGYWSSGGTSTGAAIQYALEQLFKK
 SKPNKRKVMIIITDGRSYDDVRIPAMAAYQKGVITYAIGIAWAAQDELEVMAHPAKDHSFFVDDFDNLY
 KIAPRIIQNICTEFNSQPRN

TR**PLE** – GFP Tag – V

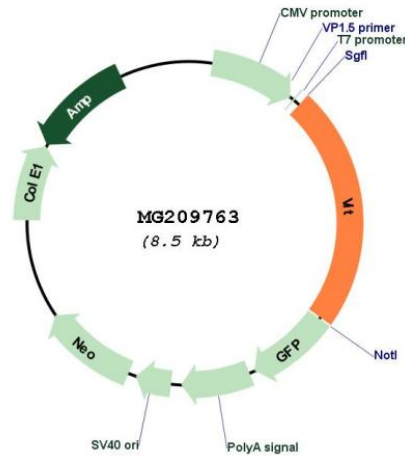
Restriction Sites: SgfI-NotI

Cloning Scheme:

Cloning sites used for ORF Shuttling:



Plasmid Map:



ACCN: NM_028813

ORF Size: 1950 bp

| | |
|-------------------------------|---|
| OTI Disclaimer: | The molecular sequence of this clone aligns with the gene accession number as a point of reference only. However, individual transcript sequences of the same gene can differ through naturally occurring variations (e.g. polymorphisms), each with its own valid existence. This clone is substantially in agreement with the reference, but a complete review of all prevailing variants is recommended prior to use. More info |
| OTI Annotation: | This clone was engineered to express the complete ORF with an expression tag. Expression varies depending on the nature of the gene. |
| Components: | The ORF clone is ion-exchange column purified and shipped in a 2D barcoded Matrix tube containing 10ug of transfection-ready, dried plasmid DNA (reconstitute with 100 ul of water). |
| Reconstitution Method: | <ol style="list-style-type: none">1. Centrifuge at 5,000xg for 5min.2. Carefully open the tube and add 100ul of sterile water to dissolve the DNA.3. Close the tube and incubate for 10 minutes at room temperature.4. Briefly vortex the tube and then do a quick spin (less than 5000xg) to concentrate the liquid at the bottom.5. Store the suspended plasmid at -20°C. The DNA is stable for at least one year from date of shipping when stored at -20°C. |
| RefSeq: | NM_028813.2 , NP_083089.1 |
| RefSeq Size: | 2737 bp |
| RefSeq ORF: | 1953 bp |
| Locus ID: | 74199 |
| UniProt ID: | Q8VHI5 |
| Cytogenetics: | 17 E3 |
| Gene Summary: | Promotes matrix assembly and cell adhesiveness (PubMed:18757743). Plays a role in spinal cord formation by regulating the proliferation and differentiation of neural stem cells (PubMed:25331329).[UniProtKB/Swiss-Prot Function] |