

Product datasheet for **MG209758**

Ssh3 (NM_198113) Mouse Tagged ORF Clone

Product data:

Product Type:	Expression Plasmids
Product Name:	Ssh3 (NM_198113) Mouse Tagged ORF Clone
Tag:	TurboGFP
Symbol:	Ssh3
Synonyms:	BC028922; mSSH-3L; SSH-3; SSH-3L
Mammalian Cell Selection:	Neomycin
Vector:	pCMV6-AC-GFP (PS100010)
E. coli Selection:	Ampicillin (100 ug/mL)



[View online »](#)

ORF Nucleotide Sequence:

>MG209758 representing NM_198113
 Red=Cloning site Blue=ORF Green=Tags(s)

TTTTGTAATACGACTCACTATAGGGCGGCCGGGAATTCGTCGACTGGATCCGGTACCGAGGAGATCTGCC
 GCC**CGGATCGCC**

ATGGCGCTGGTCACAGTGAAGTGCCTCGCCGCCGCAAGTGGCCACTCCACGCCTGTGGGACCCACGCAGG
 ACCGAGTGGTAAGACGCAGAGGCCGGCTCCAGCGCAGGCAGAGTTTTGCGGTGCTCCGAGGGGCTGTCT
 GGGACTTCAGGATGGAGGGGACAGTAATGTTGCATCTGAGGCTGACTCTGAGCCAATGGAGGAACCTCA
 GGTGAGGAACAGCCACCGAGGACCAGACTGACAAAGGGCAAGGACTCCAGAGTCCCTGGAAACAAGTGC
 AAAAGCGGCACCTGCACCTCATGGTGGAGCTACTGAGGCCGAGGATGATATCCGCCTGGCAGCCAGCT
 GGAGGCAGCCCGACCCCCAGACTTCGCTACCTGCTGGTAGTATCCACGGGAGAAGAACTGAGTGAGGAG
 GCCATCTGCTTGGGTGGACTTCCTGACAGCAGTTCACACAGCTGCACCCTGGCCTGGTCTTGCCCC
 TCTGGAGTGATACCCAGGTGTACCTGGACGGCGATGGGGCTTCAGTGTGACATCTGGTGGTCAAAGCCG
 AATCTTCAAGCCTGTCTCTATCCAGACCATGTGGGCCACTGCAGGTATTGCACCAGGCATGTGAGGTA
 GCTCTAGGCAGTGGCCTTGTGCCTGGTGGCAGTGCCTTGCCTGGGCTACTTACTACCAGGAGAACTCA
 ACTCTGACCAGGGTTGCCTCAATGAGTGGATGGCCATGTCTGACCTGGAGTCTTTTCGACCACCTAATGC
 TGAGCCTGGACAGGCTTCAGAGCAGGAAAAGATGGAGCAGGCGATCCTGGCTGAATTGTGGCAGGTGTTG
 GACACCAGTGACCTGGACAGCGTCACTTCTAAAGAGATCCGTACGGCCCTGGAGCTGCGTCTGGGATGTC
 CTCTCCAGCAGTACCGTGACTTTATTGACAACCAGATGTTGCTGCTCATGGCCAGCAAGACCGGGCCTC
 TCGCATCTCCCCACCTCTACTTGGGCTCTGAGTGAATGCTGCCAACCTGGAGGAACTTCAGAAAAAC
 AGAGTAAGTACATCCTGAACATGGCCCGGAGATTGACAACCTTCTCCCTGAGCGCTTCACCTATTACA
 ATGTACGTGCTGGGATGAGGAATCGGCACAGCTTCTGCCCACTGGAAGGAGACACATCGATTCATTGA
 GGATGCCAGAGCACAGGGCACTCGGTGCTAGTCCACTGTAAGATGGGTGTCAGCCGTTCTGCCGCCACG
 GACTAGCCTATGCCATGAAACAGTATGGCTGGGACCTGGAGCAAGCCCTGATCCACGTGCAGGAGCTCC
 GGCCATTGTACGCCCAACCACGGCTTCTGCGCCAGCTACGGACCTACCAGGGCATTCTGACTGCCAG
 CCGGCAGAGCCACGTCTGGGAGCAGAAAGTGGTGTGGTCTCCCCAGAGGAGCCCTGGCGCTGAAGTT
 TCTACACCATTGCCACCTCTCCACCAGAACCAGGGGCGAGTGGGAGGTGATGGTAATGGGCTGGAAG
 GAAGCCAGGAAACCCAAAAGAAGAACTGGACTGCGGCCCGCATCAACCTTCGAGGGGTGATGCGCTC
 CATCAGTCTCCTGGAGCCCTCAGAGTCAGAGAGTACCCAGAGGGGGAGGCCTGCCAGAAGTTTCTCT
 TCAGATGAAGAGCCTCTCATCCATTCTCTCAGCTTTCAAGAGCCAAAGGTGGCCAGCGGTCCGAAAG
 GGCTTGGCCTGCCTGAAGTCTCGACAGTCTGTGGTTGCCCTTCATAGTGTGCCTGGTGGCCAGCAG
 GACACGGGCTTCCAAGAACAGGGGCAAGGGCAAGAGCAGAGTGAAGCCTGGTATGTCTTCTACCCCTAGG
 CTCGGGAAGGTGATGAGGCAGGCCAGTGTAGATGACAGCAGGGAGGAGGACAAGGCC

ACGCGTACGCGGCCGCTCGAG - GFP Tag - GTTTAA

Protein Sequence:

>MG209758 representing NM_198113
 Red=Cloning site Green=Tags(s)

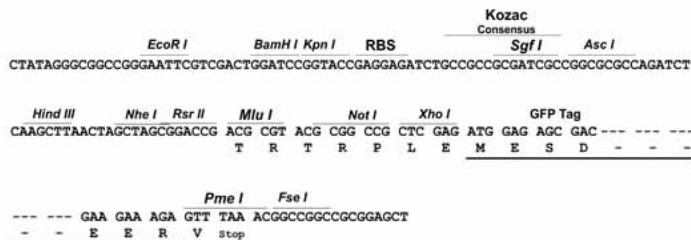
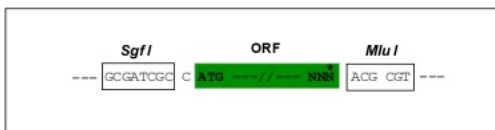
MALVTVSRSPASGHSTPVGPTQDRVRRRRLQRRQSF AVLRGAVLGLQDGGDSNVASEADSEPMEEPS
 GEEQPTEDQTDKGQLQSPWKQVQKRHLHLMVELLRPQDDIRLAAQLEAARPPRLRYLLVVSTGEELSEE
 AILLGVDFPDSSSHSCTLGLVPLWSDTQVYLDGDDGFSVTSGGQSRIFKPVSIQTMWATLQVLHQACEV
 ALGSLVPGGSALAWATYYQEKLNSDQGLNEWMAASDLESFRPPNAEPGQASEQEKMEQAILAELWQVL
 DTSDLDSVTSKEIRQALELRLGCPLQYRDFIDNQMLLLMAQQDRASRIFPHLYLGSEWNAANLEELQKN
 RVSHILNMAREIDNFFPERFTYNNVRVWDEESAQLLPHWKETHRFIEDARAQGTRVLVHCKMGVSRSAAT
 VLAYAMKQYGDLEQALIHVQELRPVIRPNHGFLRQLRQTYQGILTASRQSHVWEQKVGVSPEEPLAPEV
 STPLPPLPPEPGGSGEVMVMGLEGSQETPKHEELGLRPRINLRGMRSISLLEPSESESTPEAGGLPEVFS
 SDEEPLHPFSQLSRAKGGQVRKGPWPALKSRQSVVALHSAALVASRTRAFQEQGGQEQSEPGMSSTPR
 LRKVMRQASVDDSREEDKA

TRTRPLE - GFP Tag - V

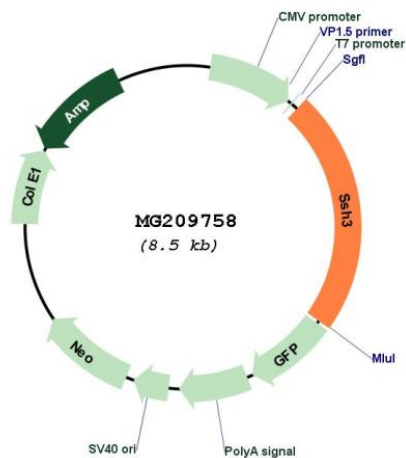
Restriction Sites: SgfI-MluI

Cloning Scheme:

Cloning sites used for ORF Shutting:



Plasmid Map:



ACCN: NM_198113

ORF Size: 1947 bp

OTI Disclaimer:	The molecular sequence of this clone aligns with the gene accession number as a point of reference only. However, individual transcript sequences of the same gene can differ through naturally occurring variations (e.g. polymorphisms), each with its own valid existence. This clone is substantially in agreement with the reference, but a complete review of all prevailing variants is recommended prior to use. More info
OTI Annotation:	This clone was engineered to express the complete ORF with an expression tag. Expression varies depending on the nature of the gene.
Components:	The ORF clone is ion-exchange column purified and shipped in a 2D barcoded Matrix tube containing 10ug of transfection-ready, dried plasmid DNA (reconstitute with 100 ul of water).
Reconstitution Method:	<ol style="list-style-type: none">1. Centrifuge at 5,000xg for 5min.2. Carefully open the tube and add 100ul of sterile water to dissolve the DNA.3. Close the tube and incubate for 10 minutes at room temperature.4. Briefly vortex the tube and then do a quick spin (less than 5000xg) to concentrate the liquid at the bottom.5. Store the suspended plasmid at -20°C. The DNA is stable for at least one year from date of shipping when stored at -20°C.
RefSeq:	NM_198113.1
RefSeq Size:	2728 bp
RefSeq ORF:	1950 bp
Locus ID:	245857
UniProt ID:	Q8K330
Cytogenetics:	19 A
Gene Summary:	Protein phosphatase which may play a role in the regulation of actin filament dynamics. Can dephosphorylate and activate the actin binding/depolymerizing factor cofilin, which subsequently binds to actin filaments and stimulates their disassembly.[UniProtKB/Swiss-Prot Function]