

## Product datasheet for **MG209752**

### Misp (NM\_030218) Mouse Tagged ORF Clone

#### Product data:

Product Type:	Expression Plasmids
Product Name:	Misp (NM_030218) Mouse Tagged ORF Clone
Tag:	TurboGFP
Symbol:	Misp
Synonyms:	9130017N09Rik
Mammalian Cell Selection:	Neomycin
Vector:	pCMV6-AC-GFP (PS100010)
E. coli Selection:	Ampicillin (100 ug/mL)



[View online »](#)

**ORF Nucleotide Sequence:**

>MG209752 representing NM\_030218  
 Red=Cloning site Blue=ORF Green=Tags(s)

TTTTGTAATACGACTCACTATAGGGCGGCCGGAATTCGTCGACTGGATCCGGTACCGAGGAGATCTGCC  
 GCC**CGATCGCC**

ATGGATCGAGTGACCAGATACCCATCTTCAGCAACCCCGCTCAGCACGTGTACCAGCTTGGTACTGG  
 ATGAAGATACCAGCTACACCGTTGAGCTAGTGGCGTGGGCCTGAGGCTGGTTGGAGCCAGGGTATCT  
 GCAGGCCCTGGTCCACTGAGTACCAGACCAGACCAGATGTAAGAGAAACAAACGTGTCTTCCAACAGACGC  
 GTCTTCTTGGCCAGCAGTCCCCGAGGTCACTGTACTTGGAAAGATGAGGATGAGGAGATAAAGTCTTATC  
 ACCTGGACGACAGCAGTACACCCTCTGCAGGCAGCGGAGGGAGCTGGAGGCTGAGCGCTGGGCAGTCAT  
 CCAGAGCCAGGCAGTCAAGAAAGGTGGCACAGTGGCCACACTCCAGGCTGCATCAGACCATGGGGACCTC  
 AGGATTGCCAGACAACCTCAGTCCACAGTCACAGAGGAGATCTTGGTGGACACGGAGCAAATTGATTTCC  
 TGGCTGCTCGACAGCAATTCCTGAGCTTAGAAAAGGCAAAACAAACCCGGTCCCCTGCGGCCCTCACAGC  
 CAGGGAGACCTTCCACGAACCCACCAGGCATCAACCAAGCCCAAGGCTTCCACTGGGCCCCACCTA  
 GCCAATGGCTATACCACTGCCGTACGTACCAATGAAGGAAGTGACCCTGGAGAAGTCTTCCATGTTT  
 CCCCAGCTAGATCCATCCATATAGTCAATGATCCTGGCAGTCAGACCCAGGCAGAATCCCCTGAGACCCC  
 CAAAGAGACGCCCATCGAGAGAGAGATCAGGCTGGCCAGGAGCGAGAGGAGAGCTGAGGGAGCAGAGA  
 GGGCTTGGGCGAGCTGCCGGGCATCAAGAGCTGGTACAGATCCCCAGCAGGCCACTGCTCAGCAAGATGA  
 GCTTGACAGAGACACCTCCACGAAGAGACAGGGGCCGCCATCCCTCTATGTGCAAAGGGACATGGTGCA  
 AGAGACACAGCGGAAGAAGATCATCGACGAGAGGGGCTGCAGGTGGCAGGGCATCCACACCTGACTGG  
 CCTTCCAGGACCTCAGCCTGGGCTCCAGAGAAGCCTGAGCTCCGATTGCATCCTCAGCCAGATGCC  
 GAGCCACAGACCCGGCTCCAGAGGCAAGGAAAGTCAACCGGATCCCAGTGGATGCCTACCAATGATCT  
 AGGCCCTGGGACCCCTAAACTAGAAATTCAGCCTTTGGAGTATACAGCAAGCAAGTGGTGTCTCCACC  
 GAAGACACCAAAGCCACAGTCTTCCAGAAGGCCAGGAGTCTCCAAGGCATGTCTCAGAATCCTCCGGCA  
 GATCGCTGAGCTCAAAGCAAGAGTGGTCCAAGCCTCCTGGAAAAGCTACCAACGTGGGTGTGGTGA  
 AGGGAATTTCCACCTGCGTCCACTGCGATTCAAGGTCCCAGATGTCCCCAGGGGACTGAGACCCCCAT  
 ACCTGGGGCTGGGAAGTGGCTGGAGGCCCATATTGAGGCTACAAAAGTACAGTCATCTGACCTGCTGG  
 AGAGGGAAATGGAGAGTGTCTGCGGAGGGAGCGGAGGTGGCTGAAGAGCGGAGGAATGCTTTCTTCCC  
 AGAGGTGTTCTCCCAGTCCAGCCGAGGATGAGAGCCATGAGCAAGACTCCCGGAGTCTCCCGGGCA  
 TCTGGCATCACTGGCAGTATTCAAGTGTGAGAATCACCACTCTTACCCCGTCCACCTGAATTCGGGGC  
 TGGTGTGGAAGGTGGAGGCCCTGAGGACAGTGTCCCCAGGGCAGAAGACTAGGAAGGAGATGTGGTA  
 TGCAGGTATCAACCCCTCAGACAGTGTCAACTCAGAGGTCTGGGAGCCCAAGGGTAAAGCGGCACAAG  
 AATCTCTTGGCGAACGCTGGGAAGCACACATCTATGCCAGCGAGGATGAAAAAC

AG**CGGACCG**ACGCGTACGCGGCCGCTCGAG - GFP Tag - GTTTAA

**Protein Sequence:**

>MG209752 representing NM\_030218  
 Red=Cloning site Green=Tags(s)

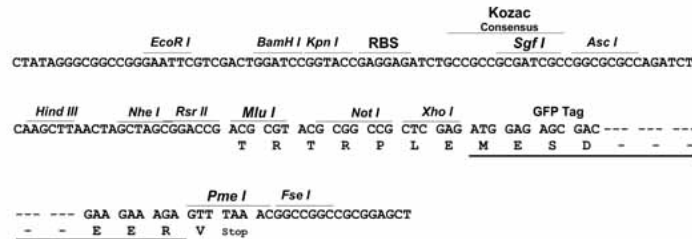
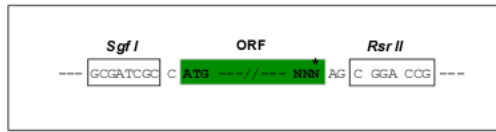
MDRVTRYPIFSNPRSARVTSVLDEEDTSYTVELVGVGPEAGWSQGDLQAWSTEYQTRPDVKRTNVSSNRR  
 VFLGQQSPRSLYLEDEDEEIKSYHLDDSSDTLCRQRRELEAERWAVIQSQAVRKGGTVATLQAASDHGDL  
 RIARQPQSTVTEEILVDTEQIDFLAARQQFLSLEKANTNPVPCGLTARETFPRTPPGINQAPKASTGPHL  
 ANGYTTAVTSPMKEVTLEKSFHVSPARSIHIVNDPGSQTQAESPETPKETPIEREIRLAQEREAELEQR  
 GLGRAAGHQELVQIPSRPLL SKMSLTETPPRRDRGRPSLYVQRDMVQETQREEDHRREGLQVGRASPDW  
 PSQDPQPLQRSLSSDCILSPDARATDPAPEARKNRIPLDAYQPYLGPSTPKLEFSAFGVYSKPSGVST  
 EDTKATVFQKATESPRHVSESSGRSLSSKQEWKPPGKATNVGVVRLGNFHLRPLRFKVPDVPQGTETPH  
 TWGWEVAGGPILRLQKSQSSDLLEREMESVLRREVEAEERRNAFFPEVFSVPAEDESHEQDSRSSRA  
 SGITGSYSVSESPLFTPVHLNSGLVWKVEAPEDSAPPQKTRKEMWYAGINPSDSVNSEVLGATRVKRHK  
 NLLAERWEAHIYASEDEN

SGP**TRRRLE** - GFP Tag - V

Restriction Sites: SgfI-RsrII

Cloning Scheme:

Cloning sites used for ORF Shuttling:



ACCN: NM\_030218

ORF Size: 1944 bp

OTI Disclaimer: The molecular sequence of this clone aligns with the gene accession number as a point of reference only. However, individual transcript sequences of the same gene can differ through naturally occurring variations (e.g. polymorphisms), each with its own valid existence. This clone is substantially in agreement with the reference, but a complete review of all prevailing variants is recommended prior to use. [More info](#)

OTI Annotation: This clone was engineered to express the complete ORF with an expression tag. Expression varies depending on the nature of the gene.

Components: The ORF clone is ion-exchange column purified and shipped in a 2D barcoded Matrix tube containing 10ug of transfection-ready, dried plasmid DNA (reconstitute with 100 ul of water).

Reconstitution Method:

1. Centrifuge at 5,000xg for 5min.
2. Carefully open the tube and add 100ul of sterile water to dissolve the DNA.
3. Close the tube and incubate for 10 minutes at room temperature.
4. Briefly vortex the tube and then do a quick spin (less than 5000xg) to concentrate the liquid at the bottom.
5. Store the suspended plasmid at -20°C. The DNA is stable for at least one year from date of shipping when stored at -20°C.

RefSeq: [NM\\_030218.2](#), [NP\\_084494.1](#)

RefSeq Size: 2427 bp

RefSeq ORF: 1947 bp

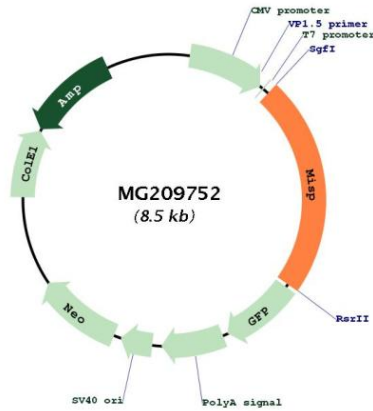
Locus ID: 78906

UniProt ID: [Q9D279](#)

Cytogenetics: 10 C1

Gene Summary: Plays a role in mitotic spindle orientation and mitotic progression. Regulates the distribution of dynactin at the cell cortex in a PLK1-dependent manner, thus stabilizing cortical and astral microtubule attachments required for proper mitotic spindle positioning. May link microtubules to the actin cytoskeleton and focal adhesions. May be required for directed cell migration and centrosome orientation. May also be necessary for proper stacking of the Golgi apparatus (By similarity).[UniProtKB/Swiss-Prot Function]

**Product images:**



Circular map for MG209752