

## Product datasheet for **MG209748**

### Ralbp1 (NM\_009067) Mouse Tagged ORF Clone

#### Product data:

Product Type:	Expression Plasmids
Product Name:	Ralbp1 (NM_009067) Mouse Tagged ORF Clone
Tag:	TurboGFP
Symbol:	Ralbp1
Synonyms:	Rip1; RLIP76
Mammalian Cell Selection:	Neomycin
Vector:	pCMV6-AC-GFP (PS100010)
E. coli Selection:	Ampicillin (100 ug/mL)



[View online »](#)

**ORF Nucleotide Sequence:**

>MG209748 representing NM\_009067  
 Red=Cloning site Blue=ORF Green=Tags(s)

TTTTGTAATACGACTCACTATAGGGCGGCCGGAATTCGTCGACTGGATCCGGTACCGAGGAGATCTGCC  
 GCC**CGCATCGCC**

ATGACTGAGTGCTTCCTGCCCCGAGCAGCAGCCCTAGTGAACACCCGAGGGCCGAGCATGGCAGCGGGC  
 TGACCCGACCCCGAGCTCTGAGGAGATCAGTCCCTACAAAGTTCCCTGGATTGTACCGGACGGGCGAGCC  
 CTCGCCTCCCATGACGTCTCCATGAGCCTCCTGATACAGTGTGATGACGACAAAGACCATGGAAAG  
 AAAAAAGGAAATTTAAGAAAAAGGAGAAAAAGGACTGAAGGCTACGCTGCCTTCCAGGAAGACAGCTCTG  
 GAGATGAAGCTGAAAGTCTTCAAGGTGAAGAGGTCCAAGGGAATCCATGTGTTCAAAAAGCCAGTTT  
 CTCTAAAAAGAAGAAAAAGATTTTAAATCAAAGAAAAACCAAGAAGAAAAGCATAAAGAAGAAAAAG  
 CACAAAGAGGAAAAGCATAAAGAAAAGAAATCGAAAGACTTGACAGCAGCTGATGTTGTTAAACAGTGGA  
 AGGAAAAGAAGAAAAAGAAAAGCCAATTCAGGAGCCAGAGGTGCCTCAGATGGACGCACCGAGTGTCAA  
 GCCATTTTTGGGGTTCCTTGGTTGACGCAGTAGAGAGGACCATGATGTACGACGGCGTCCGGCTGCCA  
 GCTGTCTTCCGGGAGTGTGTGGACTACATGGAGAAGCACGGCATGAAGTGTGAAGGCGTCTACCGGTGT  
 CAGGAATCAAATCAAAGGTAGATGAGCTAAAAGCAGCCTATGACCGAGAGGAGTCTCAAACCTAGAAAG  
 ATATGAGCCTAACACTGTAGCCAGCTTGTGGAAGCAGTATTTGCGAGACCTTCCAGAGAATTTGCTTACC  
 AAAGAGCTTATGCCCGATTTGAAGAGGCTTGTGGGAAGACCACAGAGATGGAGAAAAGTGCAGGAATTC  
 AGCGCTTGTCCGGGAAGTCCGGAGTGAATCATCTTCTGCTTTCCTGGCTCATTGTGCACCTGGACCA  
 CGTCATTGCGAAGGAGCTGGAACGAAGATGAACATCCAGAACATCTCTATAGTGTGAGCCCCACCGTG  
 CAGATCAGCAATCGGGTCTGTACGTGCTTTTACACATGTGCAAGAGCTTTTGGCACCGTGGTCTCTGA  
 AGCAAGTAACAAGACCTCTGCGCTGGTCCAACATGGCCACGATGCCACACTGCCAGACCCCAAGCAGG  
 CATCAAGGAGGAGATCAGGAGACAGGAGTTCCTTTTGAATTGTTTACATCGAGATCTGCAGGGCGGGATA  
 AAGGACTTATCTAAAGAAGAAAGATTATGGGAAGTACAGAGGATTCTGACTGCCCTCAAGAGAAAAGCTGA  
 GGAAGCTAAAAGACAAGAGTGTGAAACCAAGATTGCACAGGAGATAGCTAGTCTTTCGAAAAGAGGATGT  
 TTCAAAGAAGAAATGAATGAAAACGAAGAAGTTATAAATATCTTCTTGGCCAGGAGAATGAAATCCTG  
 ACAGAACAGGAGGAGCTCCTGGCCATGGAGCAGTTCCTGCGTCGTGATGCGCTCAGAGAAAGAAGAGA  
 TCGACCGCTCCGAGCTGAAATTCGGAGATCCAGAGCCGTGAGCAGCATGGCCGAGTGCAGCGGAGGA  
 GTACTCGTCCGACAGCAGAGTGTGAGAGCAGGAGGAGGAGTGCAGCTCATCTGGAGGACCTGCAG  
 CGGCAGAACGAGGAGTTAGAAATAAAGAACAATCACTTGAACCAAGCAGTCCATGAGGAGCGGGAGGCCA  
 TCATCGAGCTCCGAGTGCAGCTCCGGCTGCTCCAGATGCAGCGAGCCAAGTCTGAGCAGCAGCCGAGGA  
 GGAGGAGGAGCCGAGAGGCGAGGGGACAGGCCACCGCCCTGTGACGGTGTCTCGAGGTGCGGGTA  
 GCCAAGGAGCAGGCGAAGGCCTCGCCAGCAAAGACCGGAAGGAGACGCCCATC

**ACGCGT**ACGCGGGCCGCTCGAG - GFP Tag - GTTTAA

**Protein Sequence:**

>MG209748 representing NM\_009067  
 Red=Cloning site Green=Tags(s)

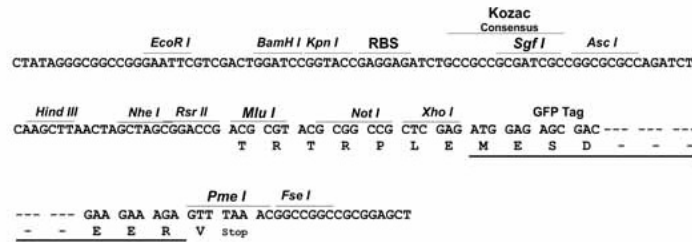
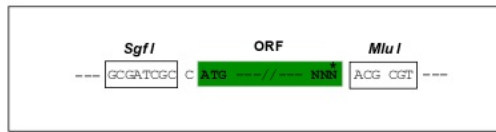
MTECFPPSSSPSEHRRAEHSGSLTRTPSSEIISPTKFPGLYRTGEPSPPHDVLHEPDTVSDDDKDHGK  
 KKKGKFKKKEKRTEGYAAFQEDSSGDEAESPSKVKRSKGIHVFKKPSFKKKEKDFKIKEKPKKEKHKEEK  
 HKEEKHKEKSKDLTAADVVKQWKEKKKKKPIQEPEVPQMDAPSVKPIFGVPLVDAVERTMMYDGVRLP  
 AVFRECDYMEKHGMKCEGVYRVSGIKSVDELKAAYDREESPNLEEYEPNTVASLLKQYLRDLPENLLT  
 KELMPRFEEACGKTTMEKVQEFQRLRELPECNHLLSWLIVHLDHVIAKELETMNIQNISIVLSPTV  
 QISNRVLYVLFTHVQELFGTVVLKQVTRPLRWSNMATMPTLPETQAGIKEEIRRQEFLLNCLHRDLQGGI  
 KDL SKEERLWEVQRILTALKRKLREAKRQECETKIAQEIASLSKEDVSKEEMNEEVEINILLAQENEIL  
 TEQEELLAMEQLRRQIASEKEEIDRLRAEIAEIQSRQQHGRSETEEYSSDSESESEDEEELQLILEDLQ  
 RQNEELEIKNNHLNQA VHEEREAI IELRVQLRLLQMRAKSEQQPQEEEEPERGGTGP PCDGVLEVRV  
 AKEQAKASPSKDRKETPI

**TRTRPLE** - GFP Tag - V

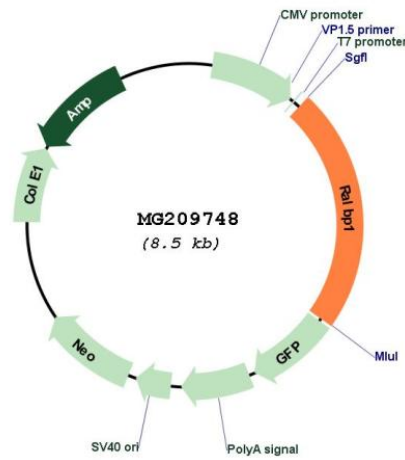
Restriction Sites: SgfI-MluI

Cloning Scheme:

Cloning sites used for ORF Shutting:



Plasmid Map:



ACCN: NM\_009067

ORF Size: 1944 bp

<b>OTI Disclaimer:</b>	The molecular sequence of this clone aligns with the gene accession number as a point of reference only. However, individual transcript sequences of the same gene can differ through naturally occurring variations (e.g. polymorphisms), each with its own valid existence. This clone is substantially in agreement with the reference, but a complete review of all prevailing variants is recommended prior to use. <a href="#">More info</a>
<b>OTI Annotation:</b>	This clone was engineered to express the complete ORF with an expression tag. Expression varies depending on the nature of the gene.
<b>Components:</b>	The ORF clone is ion-exchange column purified and shipped in a 2D barcoded Matrix tube containing 10ug of transfection-ready, dried plasmid DNA (reconstitute with 100 ul of water).
<b>Reconstitution Method:</b>	<ol style="list-style-type: none"><li>1. Centrifuge at 5,000xg for 5min.</li><li>2. Carefully open the tube and add 100ul of sterile water to dissolve the DNA.</li><li>3. Close the tube and incubate for 10 minutes at room temperature.</li><li>4. Briefly vortex the tube and then do a quick spin (less than 5000xg) to concentrate the liquid at the bottom.</li><li>5. Store the suspended plasmid at -20°C. The DNA is stable for at least one year from date of shipping when stored at -20°C.</li></ol>
<b>RefSeq:</b>	<a href="#">NM_009067.2</a>
<b>RefSeq Size:</b>	3661 bp
<b>RefSeq ORF:</b>	1947 bp
<b>Locus ID:</b>	19765
<b>UniProt ID:</b>	<a href="#">Q62172</a>
<b>Cytogenetics:</b>	17 35.26 cM
<b>Gene Summary:</b>	Can activate specifically hydrolysis of GTP bound to RAC1 and CDC42, but not RALA. Mediates ATP-dependent transport of S-(2,4-dinitrophenyl)-glutathione (DNP-SG) and doxorubicin (DOX) and is the major ATP-dependent transporter of glutathione conjugates of electrophiles (GS-E) and DOX in erythrocytes. Can catalyze transport of glutathione conjugates and xenobiotics, and may contribute to the multidrug resistance phenomenon. Serves as a scaffold protein that brings together proteins forming an endocytotic complex during interphase and also with CDK1 to switch off endocytosis, One of its substrates would be EPN1/Epsin (By similarity).[UniProtKB/Swiss-Prot Function]