

Product datasheet for **MG209742**

Slc23a2 (NM_018824) Mouse Tagged ORF Clone

Product data:

Product Type:	Expression Plasmids
Product Name:	Slc23a2 (NM_018824) Mouse Tagged ORF Clone
Tag:	TurboGFP
Symbol:	Slc23a2
Synonyms:	AI844736; mKIAA0238; NBTL1; Slc23a1; SVCT2; YSPL2; YSPL3
Mammalian Cell Selection:	Neomycin
Vector:	pCMV6-AC-GFP (PS100010)
E. coli Selection:	Ampicillin (100 ug/mL)



[View online »](#)

ORF Nucleotide Sequence:

>MG209742 representing NM_018824
 Red=Cloning site Blue=ORF Green=Tags(s)

TTTTGTAATACGACTCACTATAGGGCGGCCGGAATTCGTCGACTGGATCCGGTACCGAGGAGATCTGCC
 GCC**CGGATCGCC**

ATGATGGGTATCGCAAGAACACGGCATCCAAGTCAGTGGAGGCTGGGGCTCCACGGAAGCAATATG
 AAGAGGAGGCGAAGCACTCGAATTTCTTTACTCTCCCGTGGTATCAATGGTGGGGCCACATCCAGCGG
 AGAGCAGGACAACGAGGACACGGAGCTCATGGCAATCTACACCACAGAGAACGGCATTGCAGAGAAGAGC
 TCTCTTGACAGAGACCCTGGACAGCACTGGGAGCCTGGATCCCCAGAGGTCGGATATGATCTACACTATAG
 AAGATGTTCTCCCTGGTACTTGTGCATATTCCTGGGATTGCAGCACTACCTGACGTGTTTCAGTGGCAC
 GATCGCGGTGCCCTTTTCTGGCTGATGCCATGTGCGTGGGGATGACCAGTGGGCCACCAGCCAGCTC
 ATCGGGACCATTTCTTCTGCGTGGGAATCACTACATTGCTGCAGACAACATTTGGATGCAGTTACCCC
 TGTTTCAGGCCAGTGCTTTTGCATTTTGGCCCTGCTCGAGCCATCCTGTCTTTAGATAAATGAAATG
 TAACACCACAGAGATTACAGTTGCAATGGAACGGCAGAGCTGTTGGAACACATCTGGCATCCCCGAATC
 CAAGAGATCCAGGGGGCTATCATCATGTCTCACTGATAGAAGTGGTCATTGGCCCTCTTGGCCTGCCTG
 GGGCTCTGCTGAGGTATATTGGACCCTGACCATCACACCACCCTGGCCCTCATTGGCCTCTCTGGTTT
 CCAGGCAGCAGGAGAGAGAGCCGAAAGCACTGGGGCATTGCCATGCTGACGATTTTCTAGTGTACTC
 TTCTCACAGTATGCCAGAAATGTTAAATTTCTCTCCAAATTTACAAATCCAAGAAAGGATGGACGGCAT
 ACAAGTTCAGCTTTTCAAATGTTTCTATAATCCTGGCTATCCTCGTGTCTGGCTGCTGTGCTTCAT
 CTTACGGTGACTGATGTCTTCCCTTCAAACAGCACCGACTATGGCTACTATGCACGCACAGATGCCAGG
 AAGGGTACTTCTGGTAGCCCCATGGTTAAGGTTCCATACCCATTTCACTGGGGATGCCACCCTCT
 CTGCAGCTGGCGTCATTGGCATGCTCAGTGGCTCGTAGCCAGTATCATTGAGTCCATCGGTACTACTA
 CGCCTGTGCCAGGCTCTCCTGTGCCCGCCGCGCCTATCCATGCAATAAACAGGGGTATTTTCGTGGAG
 GGTCTTCTGTGTTCTTGTGATGGCATATTTGGTACCGGAATGGCTCTACCTCCTCCAGTCCCAATATTG
 GAGTTTGGGAATTACAAAGGTCGGCAGCCGCCGGTGTCCAGTACGGTGCAGCTCTCATGCTGGGCTT
 GGGCATGGTTGGCAAGTTCAGCGCCCTCTTGCCTCCCTCCAGACCCTGTGCTCGGAGCCCTCTTCTGC
 ACACTCTTTGGAATGATCACGGCGTGGCCTCTCGAACCTGCAGTTCATTGACTTGAATCTTCCCGGA
 ACCTGTTTGTGCTTGATTCTCCATCTTCTTGGCCTGTTCTTCCAAGTTACCTCCGACAAAACCTCT
 GGTTACAGGAATAACAGGAATCGACCAATCCTGAATGCCTTCTCACCACCGCTATGTTGTAGGAGGC
 TGTGTGGCTTTCATTTTGGACAACACCATCCAGGTACCCAGAGGAAAGAGGAATCAAGAAATGGAAGA
 AGGGTGTGAGCAAAGGAAGCAAGTCTCTGGACGGCATGGAGTCTACAATCTGCCATTTGGCATGAACAT
 TATTA AAAAGTACCGATGCTTACGCTACCTGCCATCAGCCCCACCTTTGCAGGCTACACTTGGAAAGGC
 TTTGGGAAGAGTGAGAACAGCCGGAGTTCAGACAAAGATTTCCAGGCCACAGTA

ACGCGTACGCGGCCGCTCGAG - GFP Tag - GTTTAA

Protein Sequence:

>MG209742 representing NM_018824
 Red=Cloning site Green=Tags(s)

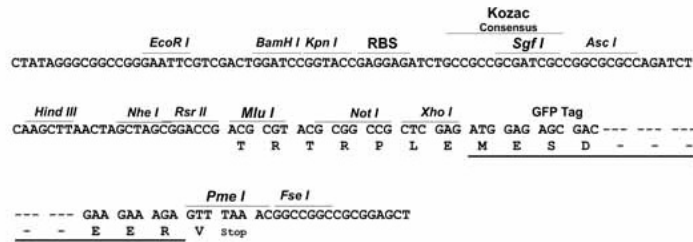
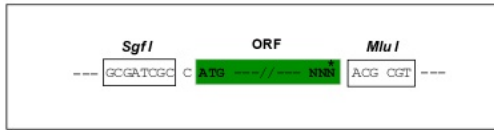
MMGIGKNTASKSVEAGGSTEGKYEEEAKHSNFFTLPVVINGGATSSGEQDNEDTELMAIYTTENGIAEKS
 SLAETLDSTGSLDPQRSDMIYTIEDVPPWYLCIFLGLQHLYLTCFSGTIAVPFLLADAMCVGDDQWATSQ
 IGTIFFCVGITLLQTTFGCRLPLFQASAFAPLAPARAILSLDKWCNTTEITVANGTAELLEHIWHPRI
 QEIQGAIIMSSLIEVVIIGLLGLPGALLRYIGPLTITPTVALIGLSGFQAAGERAGKHWGIAMLTIFLVLL
 FSQYARNVKFPLPIYKSKKGTAYKFLFKMFPIILAILVSWLLCFIFTVDVFPNSNDYGYARTDAR
 KGVLLVAPWFKVPYFPQWGMPTVSAAGVIGMLS AVVASIIESIGDYACARLSCAPPPPIHAINRGIFVE
 GLSCVLDGIFGTGNGSTSSPNIGVLGITKVGSRRIQYGAALMLGLGMVGKFSALFASLPDPVLGALFC
 TLFGMITAVGLSNLQFIDLNSSRNLFVLFGSIFFGLVLPYLRQNPLVTGITGIDQILNLLTTAMFVGG
 CVAFILDNTIPGTPEERGIKKWKKGVSKGSKSLDGMESYNL PFGMNI IKKYRCFSYLPISPTFAGYTWK
 FGKSENSRSSDKDSQATV

TRTRPLE - GFP Tag - V

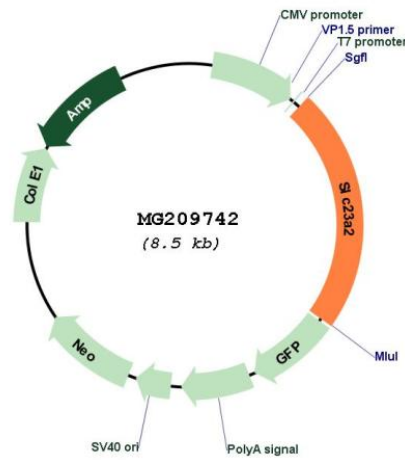
Restriction Sites: Sgfl-MluI

Cloning Scheme:

Cloning sites used for ORF Shutting:



Plasmid Map:



ACCN: NM_018824

ORF Size: 1944 bp

OTI Disclaimer:	The molecular sequence of this clone aligns with the gene accession number as a point of reference only. However, individual transcript sequences of the same gene can differ through naturally occurring variations (e.g. polymorphisms), each with its own valid existence. This clone is substantially in agreement with the reference, but a complete review of all prevailing variants is recommended prior to use. More info
OTI Annotation:	This clone was engineered to express the complete ORF with an expression tag. Expression varies depending on the nature of the gene.
Components:	The ORF clone is ion-exchange column purified and shipped in a 2D barcoded Matrix tube containing 10ug of transfection-ready, dried plasmid DNA (reconstitute with 100 ul of water).
Reconstitution Method:	<ol style="list-style-type: none">1. Centrifuge at 5,000xg for 5min.2. Carefully open the tube and add 100ul of sterile water to dissolve the DNA.3. Close the tube and incubate for 10 minutes at room temperature.4. Briefly vortex the tube and then do a quick spin (less than 5000xg) to concentrate the liquid at the bottom.5. Store the suspended plasmid at -20°C. The DNA is stable for at least one year from date of shipping when stored at -20°C.
RefSeq:	NM_018824.2 , NP_061294.2
RefSeq Size:	6487 bp
RefSeq ORF:	1947 bp
Locus ID:	54338
UniProt ID:	Q9EPR4
Cytogenetics:	2 F2
Gene Summary:	Sodium/ascorbate cotransporter. Mediates electrogenic uptake of vitamin C, with a stoichiometry of 2 Na(+) for each ascorbate (By similarity).[UniProtKB/Swiss-Prot Function]