

Product datasheet for **MG209739**

Srpk1 (NM_016795) Mouse Tagged ORF Clone

Product data:

Product Type:	Expression Plasmids
Product Name:	Srpk1 (NM_016795) Mouse Tagged ORF Clone
Tag:	TurboGFP
Symbol:	Srpk1
Synonyms:	AU017960
Mammalian Cell Selection:	Neomycin
Vector:	pCMV6-AC-GFP (PS100010)
E. coli Selection:	Ampicillin (100 ug/mL)



[View online »](#)

ORF Nucleotide Sequence:

>MG209739 representing NM_016795
 Red=Cloning site Blue=ORF Green=Tags(s)

TTTTGTAATACGACTCACTATAGGGCGGCCGGAATTCGTCGACTGGATCCGGTACCGAGGAGATCTGCC
 GCC**CGGATCGCC**

ATGGAGCGGAAAGTGCTCGCGCTCCAGGCCGAAAGAAAAGGACCAAGGCCAAGAAGGACAAAGCCAAA
 GGAAGCCTGAAACTCAGCACCGAGGCTCTGCACCCCACTCCGAGAGCGACATCCCAGAGCAGGAGGAGGA
 GATTCTAGGGTCTGACGATGACGAGCAGGAAGACCCCAATGACTACTGTAAGGAGGTTATCATCTTGTG
 AAAATTGGAGATCTATTTAACGGGAGATACCATGTGATTGAAAAATTGGGCTGGGACACTTTTCCACAG
 TGTGGTTATCATGGGATATTCAGGGAAAGAAGTTGTAGCAATGAAAGTAGTTAAAAGTCTGAGCATT
 CACAGAAACAGCACTAGATGAAATCCGGCTGCTGAAATCGGTTGCAACTCAGACCCGAATGATCCAAAT
 GGAGAAATGGTTGTTCACTACTAGATGACTTTAAAATATCAGGCGTTAATGGAACACATATCTGCATGG
 TGTTTGGAGTTTGGGGCATCATCTACTCAAGTGGATCATCAAGTCCAATATCAGGGGCTCCGCTGCC
 TTGTGTCAAAAAAATTATTCAGCAAGTGTACAGGGCCTGGATTACTTACACACCAAGTGCCGGATCATC
 CACACGGACATCAAACCAGAGAACATCTTGTGTCTGTGAATGAGCAGTACATTCGAAGGCTGGCTGCAG
 AGGCCACAGAGTGGCAGCGCTCAGGAGCTCCCCACCATCGGGTCTGCAGTCAGCACTGCTCCACAGCC
 TAAGCCAGCTGACAAAATGTCAAAGAATAAGAAGAAGAAATTGAAGAAGAAGCAGAAGCGCCAGGAGAA
 TTACTAGAGAAGCGAATGCAGGAAATGAGGAAATGGAGAAAGAGTCGGGCCCTGGGCAAAAAAGACCTA
 ACAAGCAAAGAAGATCAGAGAGTCTGTTGACAGACCCCTGACAGAGAACCCACCTAATAAAATGACCCA
 AGAGAACTTGAAGAGTCAAATTCATTGGCCAGGACCAGACACTCACGGAGCGTGGTGGAGAGGGTGGT
 GCGCCAGAGATTAATTGCAATGGAGTATTGGAGTCGTTAATTACCCTGAGAACAGTAATAATGAGACAC
 TGAGGCATAAAGAGGATCTGCATAATGCTAATGACTGTGATGTCCACACTTTGAAGCAGGAACTAGTTT
 CCTAAACTCTTCAAATGGAGACAGCAGTCCATCTCAAGACACAGACTCTTGCACACCCACGGCCTCTGAG
 ACCATGGTGTGCCAATCCTCTGCAGAGCAGTCACTCACCCGACAGGACATCACCCAGCTGGAGGAGAGCA
 TTCGGGCAGATACACCTTCTGGGGATGAGCAGGAGCCCAATGGAGCCCTGGACAGCAAAGGAAAATTCTC
 TGCTGGAATTTTCTTATTAATCCCCTTGGCCAAAAATGCAGAGAAGCTCCAAGTGAAGATCGCAGAC
 CTCGGGAACGCCTGCTGGGTGCACAAGCATTCTACTGAAGATATCCAGACAGGCAGTATCGGTCTTTGG
 AAGTCTGATAGGATCTGGCTACAACACCCTGCTGACATCTGGAGCACAGCATGCATGGCCTTTGAACT
 AGCCACAGGGGACTATTTGTTTGGCCTATTGAGGGGAGGATTACACACGAGATGAAGACCACATCGCC
 CTGATCATAGAATTCTGGGGAAGTGCCTCGCAAGCTCATTGTGCAGGAAAATACTCCAAGGAATTTT
 TCACCAAAAAAGGTGACCTGAAGCACATACCAAGTTGAAGCCTTGGGGTCTTCTGGAGGTTCTGGTGG
 GAAATATGAGTGGCCTCAGGAGGAGGCTGCCGGCTTACAGATTTCTGTGCTGCCATGTTGGAGCTTATG
 CCTGAGAAGAGAGCCACTGCTGCTGAGTGTCTCCGGCATCCTTGCTAAACTCC

ACGCGTACGCGGCCGCTCGAG - GFP Tag - GTTTAA

Protein Sequence:

>MG209739 representing NM_016795
 Red=Cloning site Green=Tags(s)

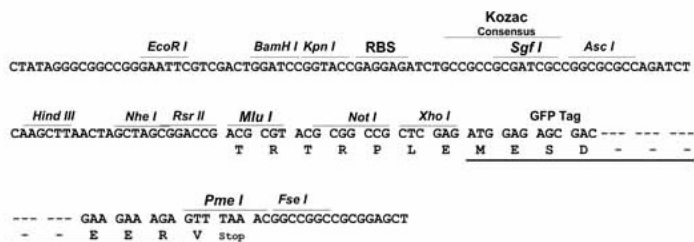
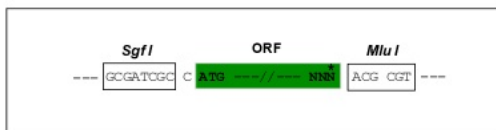
MERKVLALQARKKRTKAKKDKAQRKPKETQHRGSAPHSESDIPEQEEEILGSDDEQEDPNDYCKGGYHLV
 KIGDLFNGRYHVIRKLGWHFSTVWLWDIQGKKFVAMKVVKSAEHYTETALDEIRLLKSVRNSDPNDPN
 GEMVVQLLDDFKISGVNGTHICMVFEVLGHLLKWIISNYQGLPLPCVKKIIQQVLQGLDYLHTKCRII
 HTDIKPENILLVNEQYIRRLAAEATEWQRSGAPPPSGSAVSTAPQPKPADKMSKNNKKKKKQKQRAE
 LLEKRMQEIEEMEKESGPGQKRPNKQEESESPVDRPLTENPPNKMTQEKLEESNSIGDQTLTERGGEGG
 APEINCNGVIGVNYNPENSNNETLRHKEDLHNANDCDVHTLKQEPSFLNSNGDSSPSQDTSCTPTASE
 TMVCQSSAEQSLTRQDITQLEESIRADTPSGDEQEPNGALDSKGFSAAGNFINPLEPKNAEKLQVKIAD
 LGNACVWHKHFTEDIQTRQYRSLEVLIGSGYNTPADIWSTACMAFELATGDYLFEPHSGEDYTRDEDHIA
 LIIELLGKVPRLIVAGKYSKEFFTKKGDCLKHITKLPWGLLEVLVEKYEWPQEEAAGFTDFLLPMLLELM
 PEKRATAAECLRHPWLNS

TRTRPLE - GFP Tag - V

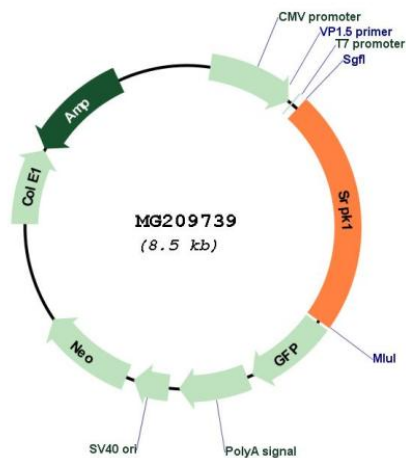
Restriction Sites: SgfI-MluI

Cloning Scheme:

Cloning sites used for ORF Shuttling:



Plasmid Map:



ACCN: NM_016795

ORF Size: 1944 bp

OTI Disclaimer:	The molecular sequence of this clone aligns with the gene accession number as a point of reference only. However, individual transcript sequences of the same gene can differ through naturally occurring variations (e.g. polymorphisms), each with its own valid existence. This clone is substantially in agreement with the reference, but a complete review of all prevailing variants is recommended prior to use. More info
OTI Annotation:	This clone was engineered to express the complete ORF with an expression tag. Expression varies depending on the nature of the gene.
Components:	The ORF clone is ion-exchange column purified and shipped in a 2D barcoded Matrix tube containing 10ug of transfection-ready, dried plasmid DNA (reconstitute with 100 ul of water).
Reconstitution Method:	<ol style="list-style-type: none">1. Centrifuge at 5,000xg for 5min.2. Carefully open the tube and add 100ul of sterile water to dissolve the DNA.3. Close the tube and incubate for 10 minutes at room temperature.4. Briefly vortex the tube and then do a quick spin (less than 5000xg) to concentrate the liquid at the bottom.5. Store the suspended plasmid at -20°C. The DNA is stable for at least one year from date of shipping when stored at -20°C.
RefSeq:	NM_016795.4
RefSeq Size:	2484 bp
RefSeq ORF:	1947 bp
Locus ID:	20815
UniProt ID:	O70551
Cytogenetics:	17 A3.3

Gene Summary:

Serine/arginine-rich protein-specific kinase which specifically phosphorylates its substrates at serine residues located in regions rich in arginine/serine dipeptides, known as RS domains and is involved in the phosphorylation of SR splicing factors and the regulation of splicing. Plays a central role in the regulatory network for splicing, controlling the intranuclear distribution of splicing factors in interphase cells and the reorganization of nuclear speckles during mitosis. Can influence additional steps of mRNA maturation, as well as other cellular activities, such as chromatin reorganization in somatic and sperm cells and cell cycle progression. Phosphorylates SFRS2, ZRSR2, LBR and PRM1. Phosphorylates SRSF1 using a directional (C-terminal to N-terminal) and a dual-track mechanism incorporating both processive phosphorylation (in which the kinase stays attached to the substrate after each round of phosphorylation) and distributive phosphorylation steps (in which the kinase and substrate dissociate after each phosphorylation event). The RS domain of SRSF1 binds first to a docking groove in the large lobe of the kinase domain of SRPK1. This induces certain structural changes in SRPK1 and/or RRM2 domain of SRSF1, allowing RRM2 to bind the kinase and initiate phosphorylation. The cycles continue for several phosphorylation steps in a processive manner (steps 1-8) until the last few phosphorylation steps (approximately steps 9-12). During that time, a mechanical stress induces the unfolding of the beta-4 motif in RRM2, which then docks at the docking groove of SRPK1. This also signals RRM2 to begin to dissociate, which facilitates SRSF1 dissociation after phosphorylation is completed. Can mediate hepatitis B virus (HBV) core protein phosphorylation. It plays a negative role in the regulation of HBV replication through a mechanism not involving the phosphorylation of the core protein but by reducing the packaging efficiency of the pregenomic RNA (pgRNA) without affecting the formation of the viral core particles. Can induce splicing of exon 10 in MAPT/TAU (By similarity).[UniProtKB/Swiss-Prot Function]