

Product datasheet for **MG209737**

Raf1 (NM_029780) Mouse Tagged ORF Clone

Product data:

Product Type:	Expression Plasmids
Product Name:	Raf1 (NM_029780) Mouse Tagged ORF Clone
Tag:	TurboGFP
Symbol:	Raf1
Synonyms:	6430402F14Rik; AA990557; BB129353; c-Raf; CraF1; D830050J10Rik; Raf-1; v-Raf
Mammalian Cell Selection:	Neomycin
Vector:	pCMV6-AC-GFP (PS100010)
E. coli Selection:	Ampicillin (100 ug/mL)



[View online »](#)

ORF Nucleotide Sequence:

>MG209737 representing NM_029780
 Red=Cloning site Blue=ORF Green=Tags(s)

TTTTGTAATACGACTCACTATAGGGCGGCCGGGAATTCGTCGACTGGATCCGGTACCGAGGAGATCTGCC
 GCC**CGGATCGCC**

ATGGAGCACATACAGGGAGCTTGAAGACGATCAGCAATGGCTTTGGACTCAAAGATGCGGTGTTTGATG
 GCTCCAGCTGCATCTCCCTACCATTGTTGAGCAGTTTGGCTATCAGCGCGGGCCTCAGATGATGGCAA
 GCTCACGGATTCTTAAGACAAGCAATACTATCCGGTTTTCTTGCCGAATAAGCAAAGGACTGTGGTC
 AATGTGCGGAATGGAATGAGCTTACATGACTGCCTTATGAAAGCTCTGAAGGTGAGAGGCCTGCAGCCAG
 AGTGCTGTGCAGTGTTCAGACTTCTCCAGGAACACAAAGGTAAGAAAGCACGCTTAGATTGGAACCCGA
 TGCCGCCTCTCTGATTGGAGAAGAACTGCAAGTGGATTTTTGGATCATGTTCCACTCACAACCTACAAC
 TTTGCTCGAAAACGTTCTGAAGCTTGCATTCTGTGACATCTGTGAGAAGTTCTGCTAAATGGATTTT
 GATGTCAGACTTGTGGCTACAAGTTTCATGAGCACTGTAGCACAAAGTACCTACTATGTGTGTGGACTG
 GAGTAATATCAGACAGCTTGTGCTTTCCAAATTCCTGTTGGTGACAGTGGAGTCCCAGCACCACT
 TCTTTCCCAATGCGTCCGATGCGAGAATCTGTTCCCGGATGCCTGCTAGTTCACAGCAGATACTCTA
 CACCCATGCCTTCACTTCAACACCTCCAGCCCTTCTCAGAAGGTTCCCTGTCCAGAGGCAGAGGTC
 AACGTCCACTCCCAATGTCCACATGGTCAGCACCACCCTGCATGTGGACAGCAGGATGATTGAGGATGCA
 ATTCGAAGTCACAGTGAATCAGCCTCACCTTCCAGCCCTGTCCAGCAGCCAAACAACCTGAGTCCAACAG
 GCTGGTACAGCCAAAACCCCTGTGCCAGCACAAAGAGAGCGGGCACCAGGATCTGGGACCCAGGAAAA
 AAACAAAATTAGGCCTCGTGGGCAGAGAGACTCGAGTTATTACTGGGAAATAGAAGCCAGTGAAGTGTG
 CTGCTACTCGGATCGGGTCAGGTTCTTTGGCACTGTGTACAAGGGCAAGTGGCATGGAGATGTTGCAG
 TAAAGATCCTAAAGTGGTTGACCAACTCCAGAGCAACTTCCAGCCCTCAGGAACGAGTGGCTGTTTT
 GCGCAAAACACGGCATGTTAACATCCTGCTGTTTATGGGGTACATGACAAGGACAACCTGGCGATTGTG
 ACTCAGTGGTGTGAAGGCAGCAGTCTCTACAAACACCTGCATGTCCAGGAGACCAATTCAGATGTTCC
 AGCTAATTGACATTGCCGACAGACAGCTCAGGGAATGGACTATTTGCATGCAAAGAACATCATCCACAG
 AGACATGAAATCCAACAATATATTTCTCCATGAAGGCCTCACGGTAAAAATTGGAGATTTTGGTTTGGCA
 ACAGTGAAGTACGCTGGAGTGGTTCTCAGCAGGTTGAACAGCCACTGGCTCTGTGCTGTGGATGGCC
 CAGAAGTAATCCGGATGCAGGATGACAACCCGTTACGCTCCAGTCCGACGTGTACTCGTACGGCATCGT
 GCTGTACGAGCTGATGGCTGGGAGCTTCCCTACGCCACATCAACAACCGAGACCAGATCATCTTCATG
 GTAGGCCGTGGGTATGCATCCCCTGATCTCAGCAGGCTCTACAAGAAGTCCCAAGGCAATGAAGAGGT
 TGGTGGCTGACTGTGTGAAGAAAGTCAAAGAAGAGAGACCTTTGTTTCCAGATCCTGTCTCCATCGA
 GCTGCTTACGACTCTCTGCCAAAATCAACAGGAGCGCCTCTGAGCCTTCCCTGCATCGGGCAGCTCAC
 ACTGAGGACATCAATGCTTGACGCTGACTACATCCCAAGGCTACCAGTCTTC

ACGCGTACGCGGCCGCTCGAG - GFP Tag - GTTTAA

Protein Sequence:

>MG209737 representing NM_029780
 Red=Cloning site Green=Tags(s)

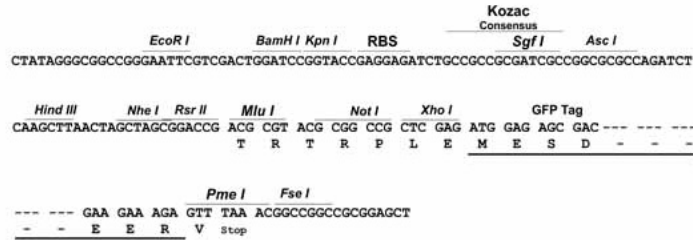
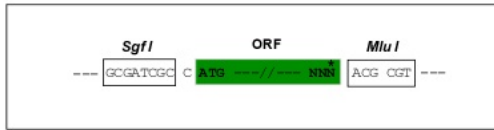
MEHIQGAWKTIISNGFGLKDAVFDGSSCISPTIVQQFGYQRRASDDGKLTDSKTSNTIRVFLPNKQRTVV
 NVRNGMSLHDCLMKALKVRGLQPECCAVFRLQEHKGGKARLDWNTDAASLIGEELQVDFLDHVPLTTHN
 FARKTFLKLAFCDICQKFLNLFRCQTCGYKFHEHCSTKVPTMCDVWSNIRQLLLFPNSTVGD SGVPAPP
 SFPMMRMRRESVSRMPASSQHRYSTPHAF TFNTSSPSSEGLSQRQRSTSTPNVHMVSTTLHVDSRMIEDA
 IRSHSESASPALS SSPNLSPTGWSQPKTPVPAQRERAPGSGTQEKNKIRPRGQRDSSYYWEIEASEVM
 LSTRIGSGSFGTYVYKGVHGDVAVKILKVVDPTEQLQAFRNEVAVLRKTRHVNILLFMGYMTKDNLAIV
 TQWCEGSSLYKHLHVQETKQMFQLIDIARQTAQGM DYLHAKNIIHRDMKSNNIFLHEGLTVKIGDFGLA
 TVKSRWSGSQQVEQPTGSVLWMAPEVIRMQDDNPF SFQSDVYSYGI VLYELMAGELPYAHINNRDQIIFM
 VGRGYASPDL SRLYKNC PKAMKRLVADCVKVKKEERPLFPQILSSI ELLQHSLPKINRSASEPSLHRAAH
 TEDINACTLTTSPRLPVF

TRTRPLE - GFP Tag - V

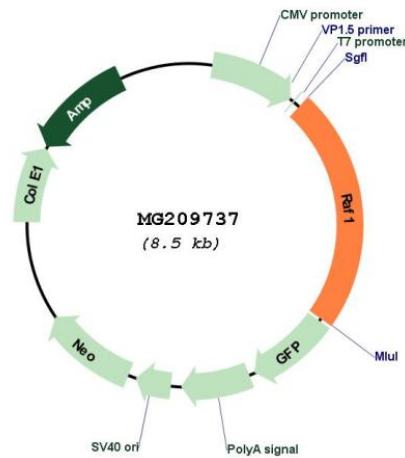
Restriction Sites: SgfI-MluI

Cloning Scheme:

Cloning sites used for ORF Shuttling:



Plasmid Map:



ACCN: NM_029780

ORF Size: 1944 bp

OTI Disclaimer:	The molecular sequence of this clone aligns with the gene accession number as a point of reference only. However, individual transcript sequences of the same gene can differ through naturally occurring variations (e.g. polymorphisms), each with its own valid existence. This clone is substantially in agreement with the reference, but a complete review of all prevailing variants is recommended prior to use. More info
OTI Annotation:	This clone was engineered to express the complete ORF with an expression tag. Expression varies depending on the nature of the gene.
Components:	The ORF clone is ion-exchange column purified and shipped in a 2D barcoded Matrix tube containing 10ug of transfection-ready, dried plasmid DNA (reconstitute with 100 ul of water).
Reconstitution Method:	<ol style="list-style-type: none">1. Centrifuge at 5,000xg for 5min.2. Carefully open the tube and add 100ul of sterile water to dissolve the DNA.3. Close the tube and incubate for 10 minutes at room temperature.4. Briefly vortex the tube and then do a quick spin (less than 5000xg) to concentrate the liquid at the bottom.5. Store the suspended plasmid at -20°C. The DNA is stable for at least one year from date of shipping when stored at -20°C.
RefSeq:	NM_029780.4
RefSeq Size:	3067 bp
RefSeq ORF:	1947 bp
Locus ID:	110157
UniProt ID:	Q99N57
Cytogenetics:	6 53.62 cM

Gene Summary:

Serine/threonine-protein kinase that acts as a regulatory link between the membrane-associated Ras GTPases and the MAPK/ERK cascade, and this critical regulatory link functions as a switch determining cell fate decisions including proliferation, differentiation, apoptosis, survival and oncogenic transformation. RAF1 activation initiates a mitogen-activated protein kinase (MAPK) cascade that comprises a sequential phosphorylation of the dual-specific MAPK kinases (MAP2K1/MEK1 and MAP2K2/MEK2) and the extracellular signal-regulated kinases (MAPK3/ERK1 and MAPK1/ERK2). The phosphorylated form of RAF1 (on residues Ser-338 and Ser-339, by PAK1) phosphorylates BAD/Bcl2-antagonist of cell death at 'Ser-75'. Phosphorylates adenylyl cyclases: ADCY2, ADCY5 and ADCY6, resulting in their activation. Phosphorylates PPP1R12A resulting in inhibition of the phosphatase activity. Phosphorylates TNNT2/cardiac muscle troponin T. Can promote NF-kB activation and inhibit signal transducers involved in motility (ROCK2), apoptosis (MAP3K5/ASK1 and STK3/MST2), proliferation and angiogenesis (RB1). Can protect cells from apoptosis also by translocating to the mitochondria where it binds BCL2 and displaces BAD/Bcl2-antagonist of cell death. Plays a role in the oncogenic transformation of epithelial cells via repression of the TJ protein, occludin (OCLN) by inducing the up-regulation of a transcriptional repressor SNAI2/SLUG, which induces down-regulation of OCLN. Restricts caspase activation in response to selected stimuli, notably Fas stimulation, pathogen-mediated macrophage apoptosis, and erythroid differentiation (By similarity). Regulates Rho signaling and migration, and is required for normal wound healing.[UniProtKB/Swiss-Prot Function]