

Product datasheet for **MG209735**

Glb1 (NM_009752) Mouse Tagged ORF Clone

Product data:

Product Type:	Expression Plasmids
Product Name:	Glb1 (NM_009752) Mouse Tagged ORF Clone
Tag:	TurboGFP
Symbol:	Glb1
Synonyms:	AW125515; Bg; Bge; Bgl; Bgl-; Bgl-e; Bgl-s; Bgl-t; Bgs; Bgt; C130097A14Rik
Mammalian Cell Selection:	Neomycin
Vector:	pCMV6-AC-GFP (PS100010)
E. coli Selection:	Ampicillin (100 ug/mL)



[View online »](#)

ORF Nucleotide Sequence:

>MG209735 representing NM_009752
 Red=Cloning site Blue=ORF Green=Tags(s)

TTTTGTAATACGACTCACTATAGGGCGGCCGGAATTCGTCGACTGGATCCGGTACCGAGGAGATCTGCC
 GCC**CGGATCGCC**

ATGCTCCGGGTCCCCTGTGTACGCCGCTCCCGCTCTGGCACTGCTGCAACTGCTGGGCGCTGCGCAGC
 GCATCTATAATGTCACCCAGAGGACATTTAAGCTCGACTACAGCCGGGACCGCTTCTCAAGGATGGACA
 GCCATTCCGATACATCTCGGGAAGCATTACTTCCGATACCCCGCTTCTACTGGGAGGACCGGCTG
 CTGAAGATGAAGATGGCTGGGCTGAATGCTATCCAGATGTACGTGCCCTGGAACCTCCATGAACCCCAAC
 CAGGACAATATGAGTTTTCTGGGACCGTGATGTGGAGCATTTTCCAGCTGGCTCATGAGCTGGGACT
 CCTGGTATCCTGAGGCCTGGGCCCTACATCTGTGCAGAGTGGGACATGGGGGGCTTACCTGCTTGCTA
 CTAGAGAAACAATCTATCGTTCTCCGGTCTTGACCCAGACTACCTGTAGCTGTGGATAAATGGCTGG
 CAGTCTTCTGCCAAGATGAAGCCCTGCTCTACCAGAACGGAGACCGATCATAACCGTGCAGGTTGA
 GAATGAGTACGGGTCCTACTTTGCTGCGATTACGACTACCTACGCTTCTGGTGCACCGCTTCCGCTAC
 CATCTGGGTAATGACGTCATTCTCTTACCACCGACGGAGCAAGTGAAAAAATGCTGAAGTGTGGGACCC
 TGCAGGACCTGTACGCCACAGTGGATTTTGAACAGGCAACAATCACACAAGCTTTTCTGGTCCAGAG
 GAAGTTTGAACCTAAAGGACCTTGTATCAATTCTGAGTTCTATACTGGCTGGCTAGACCACTGGGGTAAA
 CCCCATTCACGGTGAAGAACTAAACACTGGCTACCTCCCTCTATAACCTGCTTGCCCGTGGGGCCAACG
 TGAAGTTGACATGTTTATAGGTGGGACCAATTTTGCCTATTGGAATGGTCCAACACGCCTATGAGCC
 ACAGCCCACAGCTATGACTACGACGCCCACTGAGCGAGGCTGGGGACCTCACTAAGAAGTATTTTGTCT
 CTTGAGAAGTCAATCAGATGTTTAAAGAAGTCCAGAAGGCCCTATCCCTCCGCTACACCCAAATTTG
 CATATGGAAAAGTTGCTCTGAGAAAAGTCAAGACAGTGGCTGAAGCTCTGGGTATCCTGTGTCCTCAATGG
 GCCAGTGAAAAGCCTCTATCCCTGACATTCACCTCAGGTAAAACAGTATTTTGGGTATGTGCTGTACCGA
 ACAACGCTTCTCAAGATTGCAGTAACCCGAAACCCATTTTCTTCCACCTTCAATGGCGTCCGTGATC
 GGGCTTACGTCTCTGTGGACGGGTCCCCAAGGAATCCTTGATCGAAACCTCATGACAGCTCTGAACAT
 ACAGGGGAAGGCTGGAGCCACGCTGGACATCCTGGTGGAGAACATGGGGCGTGTGAAGTATGGCAGATTC
 ATCAATGACTTCAAGGGTTTGAATTTCAACATGACTATCAACTCCACTGCTCCTACCAACTGGACGGTCT
 TCCCACTGGACACTGAGGCCATGGTACGCAACCATCTCTGGGGCCGGGAGGCCAGTATGGGGTCACT
 TGACGGACGGTCGACCTCAATTTCTCGACCTCATACTCCCACCTTTTACGTGGGCAACTTCTCCATC
 CCCTCGGGCATCCAGACCTGCCACAGGACACCTTCATCCAGTTTCTGGGTGGTCCAAGGTTCAAGTAT
 GGATCAATGGCTTAACTCGGGCGATACTGGCCACAATGGGCCACAAAAGACCTTGTTCGTGCCAAG
 GAACATCCTGACCACTTACGCCCCAAACAACATCACAGTGTGGAGCTAGAGTTTGCACCTGCAGCGAG
 GGGACCCAGAGCTGTGTACAGTAGAGTTTGTGACACTCCGGTCATTTCC

ACGCGTACGCGGCCGCTCGAG - GFP Tag - GTTTAA

Protein Sequence:

>MG209735 representing NM_009752
 Red=Cloning site Green=Tags(s)

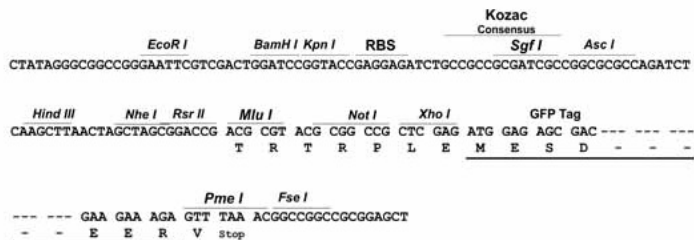
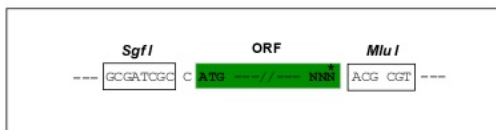
MLRVPLCTPLPLLALLQLLGAAGHIYNVTQRFTKLDYSRDRFLKDGQPPFRYISGSIHYFRIPRFYWEDRL
 LKMKMAGLNAIQMYVPWNFHEPQPGQYEFSGDRDVEHF IQLAHELGLLVILRPGPYICAEDWMGGLPAWL
 LEKQSIIVLRSSDPDYLVAVDKWLAVLLPKMKPLLQNGGPIITVQVENEYGSYFACDYDYLRFVHRFRY
 HLGNDVILFTTDGASEKMLKCGTLQDL YATVDFGTGNNITQAFVQRKFEKGPLINSEFYTGWLDHWGK
 PHSTVKTTLATSLYNLLARGANVNL YMF IGGTNFAYWNGANTPYEPQPTS YDYDAPLSEAGDLTKKYFA
 LREVIQMFKEVPEGPIPPSTPKFAYGKVALRKFKTVAEALGILCPNGPVKSLYPLTFTQVKQYFGYVLYR
 TTLPQDCSNPKPIFSSPFNGVRDRAYVSVDGVPQGILDRLNMTALNIQKGAGATLDILVENMGRVNYGRF
 INDFKGLISNMTINSTVL TNWTVFPLDTEAMVRNHLWGREASDGGHLDGRSTSNSSDLILPTFYVGNFSI
 PSGIPDL PQDTFIQFPGWSKGQVWINGFNLGRYWPTMGPQKTLFVPRNILTTSAPNNITVLELEFAPCSE
 GTEPELCTVEFVDTPVIS

TRTRPLE - GFP Tag - V

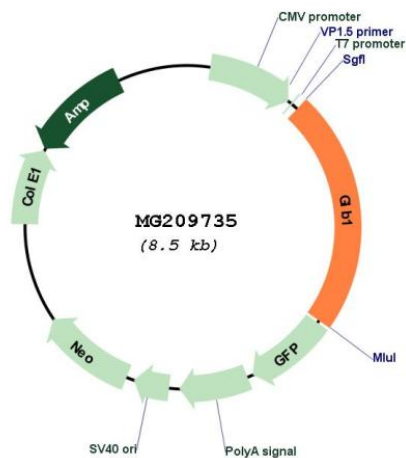
Restriction Sites: SgfI-MluI

Cloning Scheme:

Cloning sites used for ORF Shuttling:



Plasmid Map:



ACCN: NM_009752

ORF Size: 1941 bp

OTI Disclaimer:	The molecular sequence of this clone aligns with the gene accession number as a point of reference only. However, individual transcript sequences of the same gene can differ through naturally occurring variations (e.g. polymorphisms), each with its own valid existence. This clone is substantially in agreement with the reference, but a complete review of all prevailing variants is recommended prior to use. More info
OTI Annotation:	This clone was engineered to express the complete ORF with an expression tag. Expression varies depending on the nature of the gene.
Components:	The ORF clone is ion-exchange column purified and shipped in a 2D barcoded Matrix tube containing 10ug of transfection-ready, dried plasmid DNA (reconstitute with 100 ul of water).
Reconstitution Method:	<ol style="list-style-type: none">1. Centrifuge at 5,000xg for 5min.2. Carefully open the tube and add 100ul of sterile water to dissolve the DNA.3. Close the tube and incubate for 10 minutes at room temperature.4. Briefly vortex the tube and then do a quick spin (less than 5000xg) to concentrate the liquid at the bottom.5. Store the suspended plasmid at -20°C. The DNA is stable for at least one year from date of shipping when stored at -20°C.
RefSeq:	NM_009752.1 , NP_033882.1
RefSeq Size:	2360 bp
RefSeq ORF:	1944 bp
Locus ID:	12091
UniProt ID:	P23780
Cytogenetics:	9 64.4 cM
Gene Summary:	This gene encodes a preproprotein that is proteolytically cleaved to yield a signal peptide and a proprotein that is subsequently processed to generate the active mature peptide. The encoded protein is a lysosomal enzyme that catalyzes the hydrolysis of terminal beta-D-galactose residues in various substrates like lactose, ganglioside GM1 and other glycoproteins. Mutations in the human gene are associated with GM1-gangliosidosis and Morquio B syndrome. Disruption of the mouse gene mirrors the symptoms of human gangliosidosis. Alternative splicing results in multiple transcript variants. [provided by RefSeq, Dec 2013]