

Product datasheet for **MG209734**

Tie1 (BC060182) Mouse Tagged ORF Clone

Product data:

Product Type:	Expression Plasmids
Product Name:	Tie1 (BC060182) Mouse Tagged ORF Clone
Tag:	TurboGFP
Symbol:	Tie1
Synonyms:	D430008P04Rik; TIE; tie-1
Mammalian Cell Selection:	Neomycin
Vector:	pCMV6-AC-GFP (PS100010)
E. coli Selection:	Ampicillin (100 ug/mL)



[View online »](#)

ORF Nucleotide Sequence:

>MG209734 representing BC060182
 Red=Cloning site Blue=ORF Green=Tags(s)

TTTTGTAATACGACTCACTATAGGGCGGCCGGAATTCGTCGACTGGATCCGGTACCGAGGAGATCTGCC
 GCC**CGCATCGCC**

ATGGTCTGGTGGGATCCTCTTTGCTGCTCCCACTCTTTTCTTGGCCTCTCATGTTGGTGCCTGTTG
 ACTTAACATTGCTGGCAACCTGCGCATCACAGACCCCAAGCGTTTCTTCTGACCTGCGTGTCTGGTGA
 GGCCGGAGCAGGAGGAGCTCGGACCCGCCCTGCTGCTGGAGAAGGATGATCGCATCGTGCACACCTTC
 CCGCTGGCAGCCCTGTACTTGGCACGAACGGTTCTCACCAGGTACGCTGAGGGGCTTCTCCAAGC
 CCTCGATTGGTAGGCGTCTTCTCTGTGTGGTGGTGTGGCGCGGGCGCACTCGAGTTCTCTATGT
 GCACAACAGCCAGGGGCACACCTGTTTCCAGACAAGGTACACACACGGTGAACAAAGGTGACTGCT
 GTGCTTCTGCCATGTGCACAAGGAAAAGCAGACTGACGTGATCTGGAAGAACAACGGATCCTACTTCA
 ATACCCTAGACTGGCAAGAGGCCGATGACGGGCGTTTTCAACTGCAGCTCCAAAATGTACAGCCACCATC
 AAGTGGCATCTACAGTGCACCTACCTAGAGGCCAGCCCTGGGCAGTGCCTTCTTTCGGCTCATCGTG
 CGAGGCTGTGGGCTGGACGCTGGGGGCCAGGATGTGTCAAGGATTGCCAGGCTGCCTGCATGGAGGTG
 TCTGTCATGACCATGATGGCAATGTGTGTGTCCCCAGGATTCCTGGCACCCGCTGTGAGCAGGCCTG
 CAGGGAGGGTCTTTTGGACAGAGCTGTGAGAACAGTCCCAGGCACAGCAGGTTGTAGAGGTCTCACC
 TTCTGCCTCCCGATCCCTATGGCTGTTCTGTGGATCTGGTGGAGAGGAAGCCAGTGCAGGAAGCAT
 GTGCACCTGGTCAATTTGGGGCTGATTGTGCCTCCAGTGCAGTGTCAAATGGTGGCACTTGTGACCG
 GTTCAGCGGCTGCGTCTGCCCTCTGGGTGGCATGGAGTCCACTGTGAAAAGTCAAGCCGATCCCCAG
 ATCCTCAGTATGGCCACAGAGGTGGAGTCAACATAGGGACGATGCCCGGATCAACTGTGCAGCTGCC
 GGATCCCTTCCAGTGCGGGGCAGCATGAAACTTCGCAAGCCAGATGGCACCATGCTTTTGTCTACCAA
 AGTCATTGTGGAGCCAGACAGGACCACAGCAGAGTTTGAAGTGCCAGTTTGACTCTTGGGGACAGTGGG
 TTCTGGGAATGCCCGTATCGACTTCTGGTGGCAAGACAGCCGCGCTTCAAGGTCAATGTCAAAGTAC
 CCCCAGTGCCTTTGACTGCACCTCGACTCCTGGCCAAGCAGAGCCGTCAGCTTGTGGTCTCCCACTGGT
 CTCCTTTAGTGGGGATGGACCATCTCCTCTGTCCGCTGCACTACCGGCCCCAGGACAGCAGATTGCC
 TGGTCTGCCATTGTGGTGGATCCAGTGAAGTGTGACATTAATGAACCTGAAGCCAAAGACAGGATACA
 ATGTCCGAGTGCAGCTGAGCCGGCCAGGGGAAGGAGGAGAAGGAGGCTGGGGACCTTCTGCCCTTATGAC
 TACTGACTGTCTGAGCCTTTGTGTCAGCCCTGGCTAGAGAGCTGGCACGTGGAGGGTCTGACAGGCTC
 CGTGTGAGCTGGTCTCTACCCTCGGTGCCACTGTCCGGTATGGTTTCTGCTGCGCTGTGGGATGGGG
 CCCGGGGACAGGAGAGGGGGGAGAACATCTCATTCCCCAGGCCGCACTGCCCTCTGACTGGACTCAC
 GCCGGGCACCCACTACCAGCTGGATGTGCGACTGTACTGTACCCTCCTGGGCCCTGCCTCACCCCT
 GCGCATGTGCACCTGCCCCAGCGGTAGGCCACTCTGGGAAGGATGGG

ACGCGTACGCGGCCGCTCGAG - GFP Tag - GTTTAA

Protein Sequence:

>MG209734 representing BC060182
 Red=Cloning site Green=Tags(s)

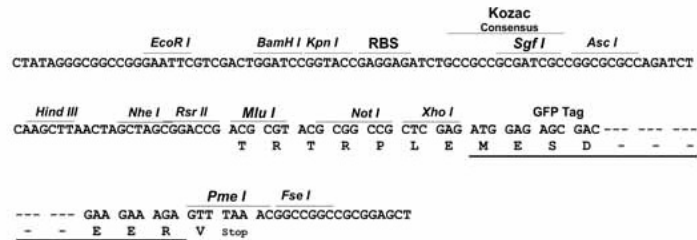
MVWVGSSLLPLFLASHV GASVDLTLANLRITDPQRFFLTCVSGEAGAGRSDPPLLEKDDRIVRTF
 PPGQPLYLARNGSHQVTLRGF SKPSDLVGVFSCVGGAGARRTRVLYVHNSPGAHLFPDKVTHTVNKGDTA
 VLSAHVHKEKQTDVIWKNNNGSYFNTLDWQEADDGRFQLQLQNVQPPSSGIYSATYLEASPLGSAFFRLIV
 RCGGAGRWGPVGDPCGCLHGGVCHDHDGECVPPGFTGTRCEQACREGRFGQSCQECPGTAGCRGLT
 FCLPDPYGCSCGSGWRGSQCQEACAPGHFGADCRLQCQCQNGGTCDFRSGCVCPSGWHGVHCEKSDRIPQ
 ILSMATEVEFNIGTMPRINCAAAGNPFVVRGSMKLRKPDGTMLLSTKVIIEPDRTTAEFEVPSLTLGDSG
 FWEICRVSTSGGQDSRRFKVNVKVPVPLTAPRLLAKQSRQLVVSPLVSFSGDGP.ISSVRLHYRPQDSTIA
 WSAIVVDPSENVTLMNLPKPTGYNVRVQLSRPEGEGGEGWGPSALMTTDCPEPLLQPWLESWHVEGPDRL
 RVSWSLPSVPLSGDGFLLRLWDGARGQERRENI SFPQARTALLTGLTPGTHYQLDVRLYHCTLLGPASPP
 AHVHLPPSGRPTLGRMG

TRTRPLE - GFP Tag - V

Restriction Sites: Sgfl-MluI

Cloning Scheme:

Cloning sites used for ORF Shutting:



ACCN: BC060182

ORF Size: 1941 bp

OTI Disclaimer: Due to the inherent nature of this plasmid, standard methods to replicate additional amounts of DNA in E. coli are highly likely to result in mutations and/or rearrangements. Therefore, OriGene does not guarantee the capability to replicate this plasmid DNA. Additional amounts of DNA can be purchased from OriGene with batch-specific, full-sequence verification at a reduced cost. Please contact our customer care team at custsupport@origene.com or by calling 301.340.3188 option 3 for pricing and delivery.

The molecular sequence of this clone aligns with the gene accession number as a point of reference only. However, individual transcript sequences of the same gene can differ through naturally occurring variations (e.g. polymorphisms), each with its own valid existence. This clone is substantially in agreement with the reference, but a complete review of all prevailing variants is recommended prior to use. [More info](#)

OTI Annotation: This clone was engineered to express the complete ORF with an expression tag. Expression varies depending on the nature of the gene.

Components: The ORF clone is ion-exchange column purified and shipped in a 2D barcoded Matrix tube containing 10ug of transfection-ready, dried plasmid DNA (reconstitute with 100 ul of water).

Reconstitution Method:

1. Centrifuge at 5,000xg for 5min.
2. Carefully open the tube and add 100ul of sterile water to dissolve the DNA.
3. Close the tube and incubate for 10 minutes at room temperature.
4. Briefly vortex the tube and then do a quick spin (less than 5000xg) to concentrate the liquid at the bottom.
5. Store the suspended plasmid at -20°C. The DNA is stable for at least one year from date of shipping when stored at -20°C.

RefSeq: [BC060182.1](#)

RefSeq Size: 4259 bp

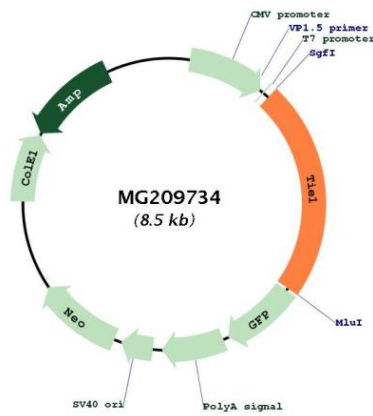
RefSeq ORF: 1943 bp

Locus ID: 21846

Cytogenetics: 4 54.67 cM

Gene Summary: Transmembrane tyrosine-protein kinase that may modulate TEK/TIE2 activity and contribute to the regulation of angiogenesis.[UniProtKB/Swiss-Prot Function]

Product images:



Circular map for MG209734