

## Product datasheet for **MG209727**

### Wac (BC080851) Mouse Tagged ORF Clone

#### Product data:

Product Type:	Expression Plasmids
Product Name:	Wac (BC080851) Mouse Tagged ORF Clone
Tag:	TurboGFP
Symbol:	Wac
Synonyms:	1110067P07Rik; A230035H12Rik; AI256735; AI256776; Wwp4
Mammalian Cell Selection:	Neomycin
Vector:	pCMV6-AC-GFP (PS100010)
E. coli Selection:	Ampicillin (100 ug/mL)



[View online »](#)

**ORF Nucleotide Sequence:**

>MG209727 representing BC080851  
 Red=Cloning site Blue=ORF Green=Tags(s)

TTTTGTAATACGACTCACTATAGGGCGGCCGGAATTCGTCGACTGGATCCGGTACCGAGGAGATCTGCC  
 GCC**CGCATCGCC**

ATGGTAATGTATGCGAGGAAACAGCAGAGACTCAGTGATGGCTGTCACGACCGGAGAGGGGACTCTCAGC  
 CTTTCCAGGCACTTAAGTATTCTTCAAAGAGTACCCCACTAGTGGTGATCACAGACATGAAAAGATGCG  
 AGACGCCGCGAGATCCTTACCACCAAACAAAATGTTGCGGAGATCTAATAGTCCTGAAAAACAAATACAGT  
 GACAGCACAGGTACAACAAGGCCAAAAACGTGCACACTCAGAGAGTTAGAGAAAGGGACGGTGGGACCA  
 GTTACTCTCCACAAGAAAACCTACACAACCACAGTGCACCTTATAGTTCAAATTCACATTCTTCTAATCC  
 AAGCAATAATCCAAGCAAACCTCAGATGCACCTTATGATTCTGCAGATGATTGGTCTGAGCACATTAGC  
 TCATCTGAAAAAAGTACTACTACAATTGTCGCACAGAAGTTTACAGTGGGAGAAACAAAAGAGTGGC  
 TTGAAAGAGAACAGAGACAAAAAGAAGCAAATAAGCTGGCAGTTAATAGTTTCCAAAAGACAGGGATTA  
 CAGAAGAGAGGTGATGCAAGCAACAGCCACTAGTGGGTTACCAGTGGAAATGGAAGACAAGCATTCCAGC  
 GATGCCAGTAGTTTGGCTCCACAGAATATTTTGTCTCAAACAAGCAGACACAATGACAAAGACTACAGAC  
 TGCCAAGAGCAGAGACTCACAGTAGCTCTACGCCAGTACAGCACCCCATCAAACAGTGGTTCATCCAAC  
 CGCTACCCCAAGCACTGTTCTTCTAGTCCATTTACGCTTCAGTCTGATCACCAGCCAAAGAAATCATT  
 GATGCTAATGGAGCATCTACTTTATCCAAACTGCCTACACCCACAGCTTCTCTCCCTGCACAGAAAAACAG  
 AGAGAAAAAGAACTGCTCCAGGAGACAAATCAATACATTCTTGCACAACCTTCCACATCTTCAGC  
 CTCTGGCTGAACCTACATCTGCGCTCCGACATCTGCTTCAGCAGTACCTGTTTCTCCGTTCCACAA  
 TCAACAATACCTCATTACTTACAGACCCAAATCTTTTAGACAGTTGCTTCTGCTTTGCAAGCCACGC  
 TACAGCTTAATAATTCTAATGTGGACATATCCAAAATAAATGAAGTTCTTACAGCAGCTGTAACACAAG  
 TTCCTGCACTATCATCCACAAGTTTCTTACTGCTGGACCATCTGCTTCAACATCACCTCACTGATT  
 TCTCAAGTGCACAGCTTCTACACAAGCCAGCCATCTAATCAGTCTCCAATGTCTCTGACATCTGATG  
 CTTTCATCCCAAGATCCTATGTGTCTCCAAGAATAAGCACACCTCAAACCTAATACAGTCCCTATGAAAC  
 TTTGATTAGTACTCCACCTGTTTCATCCAGCCAAAGGTTAGTACTCCAGTAGTTAAGCAAGGACCAGTG  
 TCACATTCGGCTACACAGCAGCCTGTAAGTCTGACAAGCAGCAGAGCCATGATTCTGTTTCTCCTCGAA  
 GTCTTCAGCGCTAAGTAGCCAGAGAAGTCCATCACCTGGTCCAATCATACTTGTAGTAGTAATGCATC  
 AACTGCAACTGTTGTACCACAGAATGCATCTGCTAGACCTGCGTGCTCATTAAACACCTACTCTAGCAGCG  
 CACTTCAATGATAATCTCATAAAGCATGTTCAAGGGTGGCTGCAGACCACGCAGAGAAACAGGCATCAA  
 GATTGCGTGAAGAAGCCATAATATGGGAAGTGTACATATGTCAGAAATATGACTGAGTTAAAAAATTT  
 GAGATCATTAGTTCGAGTATGTGAAATCAAGCACTTTGCGAGAGCAGAGGATACTATTTTTGAGACAA  
 CAAATTAAGGAACCGAAAAGCTGAAAATCAGAATTCCTTCATGGTT

**ACGCGT**ACGCGGCCGCTCGAG – GFP Tag – GTTTAA

**Protein Sequence:**

>MG209727 representing BC080851  
 Red=Cloning site Green=Tags(s)

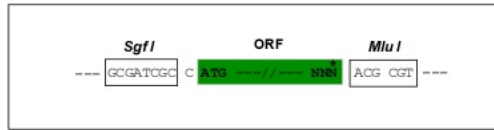
MVMYARKQRLSDGCHDRRGRDQPFQALKYSSKSHPSGDRHEKMRDAADPSPPNKMLRRSNSPENKYS  
 DSTGHNAKKNVHTQVRERDGGTSYSPQENSHNSALHSSNSHSSNPNPSKTSAPYDSADDWSEHIS  
 SSGKYYNCRTEVSQWEKPKWLEREQRQKEANKLAVNSFPKDRDYRREVMQATATSGFTSGMEDKHSS  
 DASSLLPQNILSQTSRHNDKDYRLPRAETHSSSTPVQHPKPVVHPTATPSTVPSSPFTLQSDHQPKKSF  
 DANGASTLSKLPPTASLPAQKTERKESAPGDKSIHSHCTTPSTSSASGLNPTSAPPTSASAVPVPVPPQ  
 STIPPLLQDPNLFRLPALQATLQLNNSNVDISKINEVLTAAVTQASLQSIHFKFLTAGPSAFNITSLI  
 SQAAQLSTQAQPSNQSPMSLTSASSPRSYVSPRISTPQTNTVPMKPLISTPPVSSQPKVSTPVVKQGPV  
 SHSATQQPVTADKQQSHDSVSPRSLQRLSSQRSPSPGNHTCSSNASTATVVPQNASARPACSLTPTLAA  
 HFNDNLIKHVQGWPADHAEKQASRLREEAHNMGSVHMSEICTELKNLRSRVRVCEIQATLREQRILFLRQ  
 QIKELEKLNQNSFMV

**TRTRPLE** – GFP Tag – V

Restriction Sites: SgfI-MluI

Cloning Scheme:

Cloning sites used for ORF Shutting:



ACCN: BC080851

ORF Size: 1940 bp

OTI Disclaimer: The molecular sequence of this clone aligns with the gene accession number as a point of reference only. However, individual transcript sequences of the same gene can differ through naturally occurring variations (e.g. polymorphisms), each with its own valid existence. This clone is substantially in agreement with the reference, but a complete review of all prevailing variants is recommended prior to use. [More info](#)

OTI Annotation: This clone was engineered to express the complete ORF with an expression tag. Expression varies depending on the nature of the gene.

Components: The ORF clone is ion-exchange column purified and shipped in a 2D barcoded Matrix tube containing 10ug of transfection-ready, dried plasmid DNA (reconstitute with 100 ul of water).

Reconstitution Method:

1. Centrifuge at 5,000xg for 5min.
2. Carefully open the tube and add 100ul of sterile water to dissolve the DNA.
3. Close the tube and incubate for 10 minutes at room temperature.
4. Briefly vortex the tube and then do a quick spin (less than 5000xg) to concentrate the liquid at the bottom.
5. Store the suspended plasmid at -20°C. The DNA is stable for at least one year from date of shipping when stored at -20°C.

RefSeq: [BC080851](#), [AAH80851](#)

RefSeq Size: 3282 bp

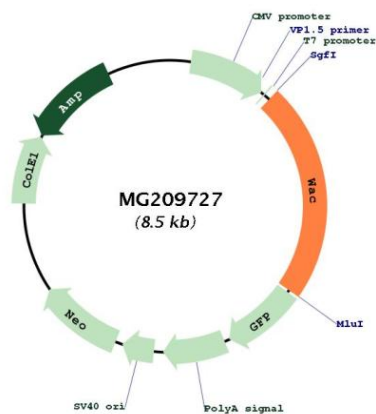
RefSeq ORF: 1940 bp

Locus ID: 225131

Cytogenetics: 18 A1

**Gene Summary:**

Acts as a linker between gene transcription and histone H2B monoubiquitination at 'Lys-120' (H2BK120ub1). Interacts with the RNA polymerase II transcriptional machinery via its WW domain and with RNF20-RNF40 via its coiled coil region, thereby linking and regulating H2BK120ub1 and gene transcription. Regulates the cell-cycle checkpoint activation in response to DNA damage. Positive regulator of amino acid starvation-induced autophagy. Also acts as a negative regulator of basal autophagy. Positively regulates MTOR activity by promoting, in an energy-dependent manner, the assembly of the TTT complex composed of TELO2, TTI1 and TTI2 and the RUVBL complex composed of RUVBL1 and RUVBL2 into the TTT-RUVBL complex. This leads to the dimerization of the mTORC1 complex and its subsequent activation. May negatively regulate the ubiquitin proteasome pathway.[UniProtKB/Swiss-Prot Function]

**Product images:**

Circular map for MG209727