

Product datasheet for **MG209725**

Abcg4 (NM_138955) Mouse Tagged ORF Clone

Product data:

Product Type:	Expression Plasmids
Product Name:	Abcg4 (NM_138955) Mouse Tagged ORF Clone
Tag:	TurboGFP
Symbol:	Abcg4
Synonyms:	6430517O04Rik
Mammalian Cell Selection:	Neomycin
Vector:	pCMV6-AC-GFP (PS100010)
E. coli Selection:	Ampicillin (100 ug/mL)



[View online »](#)

ORF Nucleotide Sequence:

>MG209725 representing NM_138955
 Red=Cloning site Blue=ORF Green=Tags(s)

TTTTGTAATACGACTCACTATAGGGCGGCCGGAATTCGTCGACTGGATCCGGTACCGAGGAGATCTGCC
 GCC**CGCATCGCC**

ATGGCGGAGAAGGCATTGGAGGCCGTGGGCTGTGGACTGGGCCCTGGGGCTGTGGCCATGGCTGTGACAC
 TGGAGGACGGGGCAGAGCCCCCTGTGCTGACCACGCACCTAAAGAAGGTGGAGAACCATATCACAGAAGC
 ACAGCGCTTCTCTCACCTGCCAAGCGCTCTGCTGTGGACATCGAGTTCGTGGAAGTGTCTATTCCGTG
 CGGGAGGGGCCCTGCTGGCGCAAACGGGGTTACAAGACCCTCTCAAGTGCCTGTCTGGTAAATTCTGTC
 GCCGAGAGCTGATTGGCATCATGGGCCCTCTGGGGCTGGCAAGTCCACATTCATGAACATCTTGGCAGG
 GTACAGGGAGTCGGGGATGAAGGGGCAGATCCTGGTTAACGGGAGGCCGCGGAGCTGAGGACCTCCGC
 AAGATGTCCTGCTACATCATGCAGGATGACATGCTACTGCCTCACCTCACAGTCTGGAGGCCATGATGG
 TCTCTGCCAACCTGAAGCTGAGTGAGAAGCAAGAGGTGAAGAAGGAACTGGTACAGAGATCCTGACAGC
 CCTGGGACTGATGCTCTCTCACACGAGGACAGCTCTGCTCTCTGGAGGGCAGAGGAAGCGCCTGGCC
 ATTGCTCTGGAACGGTCAACAACCCGCTGTCATGTTCTTTGATGAGCCTACCAGCGGTCTAGACAGCG
 CTCTTTGTTTCAAGTGGTGTCCCTCATGAAGTCCCTGGCCCATGGGGCCGCACCGTCACTGACCCAT
 CCACCAGCCCAGTGCCAAGCTCTTTGAGATGTTTGACAAGCTCTACATCCTGAGCCAGGGGCAATGCATC
 TTCAAGGGCGTGGTTACCAACCTGATCCCTATCTGAAGGGGCTTGGCTTGCAGTGTCCACCTACCACA
 ACCCCGCTGACTTCATCATTGAGGTGGCCTCTGGAGAGTATGGAGACCTGAACCCCATGCTGTTCCAGGGC
 TGTGCAGAATGGCCTTTGCACCATGGCCGAGAAGAAGAGCAGCCCTGGGAAGAAATGAGCTCCCTGCCAC
 TGCCCCACTTGCCCTCCGGAGCTGGATCCTATTGAAAGCCACACATTTGCCACCAGCACCCATACCCAGT
 TCTGCATCCTCTCAGGAGGACTTTCTTGTCCATCCTCAGGGACACGGTCTGACCCACTTGCAGTTTCAT
 GTCACATGTTGATCGGCGTCCCTATTGGCCTCCTCTACCTGCACATTGGCGATGATGCCAGCAAAGTC
 TTCAACAACACCGGCTTCTCTTTTCCATGCTCTTCTCATGTTTGCAGCCCTCATGCCAGCCTGCTC
 TCACCTTTCCCTTAGAGATGGCGGTCTTCATGAGGGAGCACTTGAAGTACTGGTATACTCTCAAAGCCTA
 TTACTTGGCCAAGACCATGGCTGATGTGCCCTCCAGGTGGTATGCCAGTGGTGTACTGCAGCATCGTG
 TACTGGATGACAGGCCAGCCAGCCGAGACCAGCCGCTTCTGCTTCTCAGCCTTGCCATAGCCACCG
 CCTTAGTTGCCAGTCTTTGGGACTCTTGATTGGCGCTGCCTCTACCTCCTTGCAGTGGCCACTTTTGT
 GGGCCAGTACTGCCATCCCTGTCTCTTGTCTCCGGCTTCTCGTCAGTTTCAAGACCATCCCCTACT
 TACTTGAATGGAGCTCCTACCTCTCCTATGTTAGGTATGGCTTTGAGGGTCTGATCCTGACCATCTATG
 GTATGGAGCGAGGACACCTGACCTGCTTAGATGAACAGTGCCCATTCGGGACCCACAAATCATTTTGGC
 TGAGCTGGATGTAGAGGAGGCCAAACTCTACATGGACTTCTGGTCTGGGCATTTTCTCTTGCCTG
 CGGCTGCTGGCATACTTGTGCTCCGGTACCGGTCAAGTCTGAGAGA

ACGCGTACGCGGCCGCTCGAG - GFP Tag - GTTTAA

Protein Sequence:

>MG209725 representing NM_138955
 Red=Cloning site Green=Tags(s)

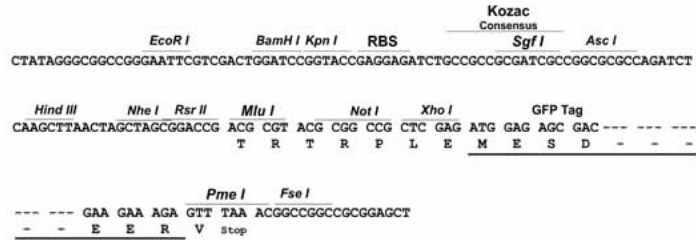
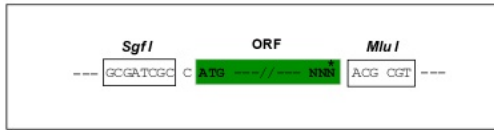
MAEKALEAVGCGLGPGAVAMAVTLEDGAEPVLTTHLKKVENHITAEQRFSHLPKRSAVDIEFVELSYSV
 REGPCWRKRGYKTLKCLSGKFCRRELIGIMPSGAGKSTFMNLAGYRESGMKGQILVNGRPRELRTFR
 KMSCYIMQDDMLLPHLTVLEAMMVSANLKLSEKQEVKKELVTEILTALGLMSCSHTRTALLSGGQRKRLA
 IALELVNPPVMFFDEPTSGLDASCFQVVSLMKSLAHGGRTVICTIHQPSAKLFEMFDKLYILSQGQCI
 FKGVVNTLIPYLKGLGLHCPTYHNPADFIIEVASGEYGLNPMLFRAVQNGLCTMAEKKSSPGKNELPAH
 CPTCPPELDPIESHTFATSTLTQFCILFRRTFLSILRDTVLTHLRFMSHVLIGVLIGLLYLHIGDDASKV
 FNNTGFLFFSMLFLMFAALMPTVLTFFLEMAVFMREHLNYWYTLKAYYLAKTMADVPFQVVCPVYVCSIV
 YWMTGQPAETSRFLLFSALAIATALVAQSLGLLIGAASLQVATFVGPVTAIPVLLSFGFFVFSFKTIPT
 YLQWSSYLSYVRYGFELILTIYGMERGHLTCLDEQCFRDPQIILRELDVEEAKLYMDFLVLGIFFLAL
 RLLAYLVLRYRVKSER

TRTRPLE - GFP Tag - V

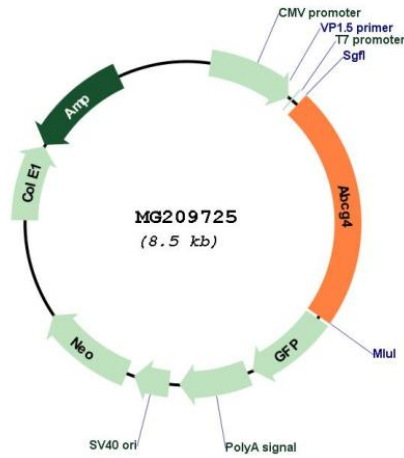
Restriction Sites: SgfI-MluI

Cloning Scheme:

Cloning sites used for ORF Shutting:



Plasmid Map:



ACCN: NM_138955

ORF Size: 1938 bp

OTI Disclaimer:	The molecular sequence of this clone aligns with the gene accession number as a point of reference only. However, individual transcript sequences of the same gene can differ through naturally occurring variations (e.g. polymorphisms), each with its own valid existence. This clone is substantially in agreement with the reference, but a complete review of all prevailing variants is recommended prior to use. More info
OTI Annotation:	This clone was engineered to express the complete ORF with an expression tag. Expression varies depending on the nature of the gene.
Components:	The ORF clone is ion-exchange column purified and shipped in a 2D barcoded Matrix tube containing 10ug of transfection-ready, dried plasmid DNA (reconstitute with 100 ul of water).
Reconstitution Method:	<ol style="list-style-type: none">1. Centrifuge at 5,000xg for 5min.2. Carefully open the tube and add 100ul of sterile water to dissolve the DNA.3. Close the tube and incubate for 10 minutes at room temperature.4. Briefly vortex the tube and then do a quick spin (less than 5000xg) to concentrate the liquid at the bottom.5. Store the suspended plasmid at -20°C. The DNA is stable for at least one year from date of shipping when stored at -20°C.
RefSeq:	NM_138955.3
RefSeq Size:	3628 bp
RefSeq ORF:	1941 bp
Locus ID:	192663
Cytogenetics:	9 A5.2