

Product datasheet for **MG209724**

Wee1 (NM_009516) Mouse Tagged ORF Clone

Product data:

Product Type:	Expression Plasmids
Product Name:	Wee1 (NM_009516) Mouse Tagged ORF Clone
Tag:	TurboGFP
Symbol:	Wee1
Synonyms:	Wee1A
Mammalian Cell Selection:	Neomycin
Vector:	pCMV6-AC-GFP (PS100010)
E. coli Selection:	Ampicillin (100 ug/mL)



[View online »](#)

ORF Nucleotide Sequence:

>MG209724 representing NM_009516
 Red=Cloning site Blue=ORF Green=Tags(s)

TTTTGTAATACGACTCACTATAGGGCGGCCGGGAATTCGTCGACTGGATCCGGTACCGAGGAGATCTGCC
 GCC**CGGATCGCC**

ATGAGTTCCTGAGCCGACAGCAGCCGCCACCCCGCGCTAGGAGCCGCTTACAGTCTGCGGCAGA
 AGCTCATCTTCTCGCCGGCAGCGACTGTGAGGAAGAGGAGGAGGAGGAGGAAGGCAGCGGCCACAG
 TACGGGGGAGGACTCGGCCCTCCAGGAACCGGATTCGCCCTGCCTTCTGCACGCAGCCCTGCCAGGCC
 GAGGCCGAGCGCCGCTCGCTCGCCCGCGCGGAGCCAGCAGCCGGGAGAGCTGGAGGACGACTTGC
 TGCTGCAGGGCGCGCGGAGGCGCAAGCGCGGGTGGAGGCGCCGAGGGCGACTCTTGGGAGGAGGA
 GGGTTTCGGCTCCTCGTCGCCGTCAAATCACCTTCGACCGCCTACTTTCTGAGCAGCCGTTCTCGCCA
 GTGCGCTGCGCGGCCAGGGGATGCCTCCCCGAGGGTTCGCGGGCTCCGCGAGCCATGGACGACCCT
 GCTCGCCGAGCCGACTACCCGAGCACCCTCCGCACAAGACCTCCGCAAGCTGCGCCTGTTGACAC
 GCCGCACACTCCAAGAGTTTGCTTCCAAAGCGCGAGTTATTGATTCCGGCTCTGTTAAACTCCGGGT
 AGTTCTCTATTGACACAGAAAAGTCAAGAAAAGAGAATTCGATACACGGCAAACCTCCCAAGTGA
 ATATTAACCCCTTACTCCGGATCCTGTACTGCTCCATTCTCAGGACGGTGTCTGTTGGGAGAAAAGAGC
 GTATTTAATGATTCTCTGAAGACATGGAAGCCAGTGATTATGAGTTTGAAGATGAAACAAGACCTGCC
 AAAAGAATTACAATTACTGAAAGCAACATGAAGTACCGGTATACAACCTGAATTTTCATGAGCTGGAGAAA
 TTGGTTCTGGAGAATTTGGTTCTGTGTTAAATGTGTGAAGAGGTTAGATGGATGCATTTATGCCATTAA
 ACGATCAAAAAACCATTGGCTGGCTCTGTTGATGAGCAGAATGCTTTGAGAGAAGTGTATGCTCACGCT
 GTGCTTGGACAGCACCCACGTCGTTTCGCTATTTCTGCTGGCAGAGGATGACCACATGCTTATAC
 AGAACGAATACTGTAATGGTGGGAGTTTAGCTGATGCTATAAGTGAGAACTACAGAGTCATGACTACTT
 GACTGAAGTAGAGCTGAAGGATCTCCTTTTGAAGTTGGCCGGGCTTGAGATACATACATTCAATGTCT
 TTGGTTCACATGGATATAAACCTAGTAATATTTTTATATCTCGAACCTCAATCCCAAATGCTGTCTCTG
 AGGAAGGAGATGAAGATGACTGGATATCCAATAAAGTTATGTTTAAAATAGGTGATCTTGGGCATGTAAC
 AAGAATCTCTAGTCTCAAGTTGAAGAAGGTGATAGTCGTTTTCTAGCAAATGAAGTTTTACAAGAGAAC
 TATAGCCATCTACCGAAAGCAGATATTTTTGCTCTTGTCTCACAGTCGATGTGCTGCTGGTGTGAAC
 CCCTTCCAGAAATGGAGAGCAGTGGCACGAGATCCGGCAGGGTCGGTTACCTCGGATCCCAAGTGTCT
 TTCCAGGAGGTGACAGAGTTGCTGAGAGTCATGATTCATCTGACCCAGAGAGAAGGCCTTCAGCAATG
 GAGCTGGTGAAGCATTAGTGTGTTGTCTGCATCTAGAAGAGCGCAGAGCAGTTACGAATAGAATTGA
 ATGCTGAAAAATTCAAAATCTCTTTTGCAGAAAGAACTCAAGAAAGCCCAAATGGCAGCCAAAGTTGC
 AGCTGAGGAACGGGCACTCTTACAGATCGGATGGCCACTAGATCCACCACCCAGAGTAATAGAACTTCT
 CGACTATTGGAAAGAAAATGAACCGCTCTGTCAGCCTTACTATATAC

ACGCGTACGCGGCCGCTCGAG - GFP Tag - GTTTAA

Protein Sequence:

>MG209724 representing NM_009516
 Red=Cloning site Green=Tags(s)

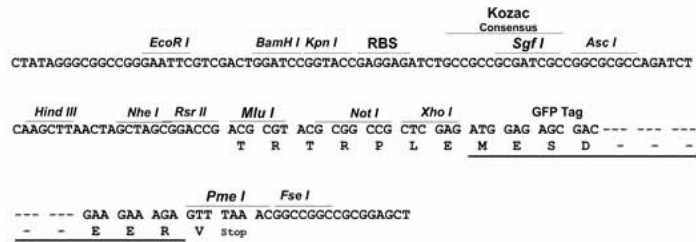
MSFLSRQQPPTRRVGAAYSLRQKLIIFSPGSDCEEEEEEEEGSGHSTGEDSAFQEPDSPLPSARSPAEA
 EAERRRRSPGAEPSSPGELEDDLLLQGGGGAQAAGGGAEGDSWEEEGFGSSSPVKSPSTAYFLSSPSP
 VRCGGPDASPQCGAPRAMDDPCSPQPDYPSTPPHKTFRKLRLFDTPHTPKSLLSKARVIDSGSVKLRG
 SSLFMDTEKSGKREFDTRQTPQVNINPFTDPVLLHSSGRGRKRAYFNDSSEDMESDYEFEDTRPA
 KRITITESNMKSRYTTFEHELEKIGSGEFVFKCVKRLDGCIIYAIKRSKPLAGSVDEQNALREVVYHA
 VLGQHPHVRYFSAWAEDHMLIQNEYCNGSLADAISENYRVMYSYLTEVELKDLLLQVGRGLRYIHSMS
 LVHMDIKPSNIFISRTSIPNAVSEEGEDDWSNKVMFKIGDLGHVTRISSPQVEEGDSRFLANEVLQEN
 YSHLPKADIFALALTVVCAAGAEPLPRNGEQWHEIRQGRLPRIPQVLSQEVTELLRVMIHDPERRPSAM
 ELVKHSVLLSASRKSAEQLRIELNAEKFNLSLLQKELKKAQMAAKVAAEERALFTDRMATRSTTQSNRTS
 RLIGKMMNRSVSLTIY

TRTRPLE - GFP Tag - V

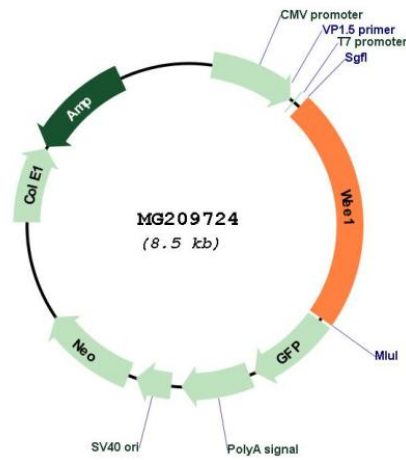
Restriction Sites: SgfI-MluI

Cloning Scheme:

Cloning sites used for ORF Shutting:



Plasmid Map:



ACCN: NM_009516

ORF Size: 1938 bp

OTI Disclaimer:	The molecular sequence of this clone aligns with the gene accession number as a point of reference only. However, individual transcript sequences of the same gene can differ through naturally occurring variations (e.g. polymorphisms), each with its own valid existence. This clone is substantially in agreement with the reference, but a complete review of all prevailing variants is recommended prior to use. More info
OTI Annotation:	This clone was engineered to express the complete ORF with an expression tag. Expression varies depending on the nature of the gene.
Components:	The ORF clone is ion-exchange column purified and shipped in a 2D barcoded Matrix tube containing 10ug of transfection-ready, dried plasmid DNA (reconstitute with 100 ul of water).
Reconstitution Method:	<ol style="list-style-type: none">1. Centrifuge at 5,000xg for 5min.2. Carefully open the tube and add 100ul of sterile water to dissolve the DNA.3. Close the tube and incubate for 10 minutes at room temperature.4. Briefly vortex the tube and then do a quick spin (less than 5000xg) to concentrate the liquid at the bottom.5. Store the suspended plasmid at -20°C. The DNA is stable for at least one year from date of shipping when stored at -20°C.
RefSeq:	NM_009516.3 , NP_033542.2
RefSeq Size:	3419 bp
RefSeq ORF:	1941 bp
Locus ID:	22390
UniProt ID:	P47810
Cytogenetics:	7 E3
Gene Summary:	Acts as a negative regulator of entry into mitosis (G2 to M transition) by protecting the nucleus from cytoplasmically activated cyclin B1-complexed CDK1 before the onset of mitosis by mediating phosphorylation of CDK1 on 'Tyr-15'. Specifically phosphorylates and inactivates cyclin B1-complexed CDK1 reaching a maximum during G2 phase and a minimum as cells enter M phase. Phosphorylation of cyclin B1-CDK1 occurs exclusively on 'Tyr-15' and phosphorylation of monomeric CDK1 does not occur. Its activity increases during S and G2 phases and decreases at M phase when it is hyperphosphorylated. A correlated decrease in protein level occurs at M/G1 phase, probably due to its degradation (By similarity). [UniProtKB/Swiss-Prot Function]