

Product datasheet for **MG209720**

Pja2 (BC017130) Mouse Tagged ORF Clone

Product data:

Product Type:	Expression Plasmids
Product Name:	Pja2 (BC017130) Mouse Tagged ORF Clone
Tag:	TurboGFP
Symbol:	Pja2
Synonyms:	mKIAA0438, MGC27629
Mammalian Cell Selection:	Neomycin
Vector:	pCMV6-AC-GFP (PS100010)
E. coli Selection:	Ampicillin (100 ug/mL)



[View online »](#)

ORF Nucleotide Sequence:

>MG209720 representing BC017130
 Red=Cloning site Blue=ORF Green=Tags(s)

TTTTGTAATACGACTCACTATAGGGCGGCCGGGAATTCGTCGACTGGATCCGGTACCGAGGAGATCTGCC
 GCCCGCATCGCC

ATGTCACAGTACACTGAAAAAGAGCCATCAGTAATGGATCAAGAATCCAGCAAGGCTGCTTGGCCTAAAC
 CAGCAGGAGGATATCAGACTATCACAGGCAGGAGATATGGAAGAAGACATGCGTATGTCAGTTTTAAGCC
 ATGTATGACCAGGCATGAAAGAAGCTTGGGTGGGCTGGTGTACTATGAAGTGTGGAAGTACAGCAGT
 GTTCCAAAGGAGAACACCTCAGGTTCCAGTTCATTGGATCAAGTCCATCTGCTTTACCAAATGAACCTA
 CAGTTGAAAAAGTGAACAGAAATTTCTACTTGGTCCAGCACTGAATCAAAGCACTGAGAGCAGTCC
 ATCCATTGCCACAGTATGTCATAGTGAGGAAGTCAAGGAGACCTAGAAAAGCAATACAAACCTTCATAAT
 CGCACTGAGACAGAGCATACTCCAGCAGTTTGAATGTCTCAAGTGTCCAGAATGGAATTATGTTGGTTC
 ATACTGACTCTTATGATCCAGACAGCAAGCATGATGAGAATGGCTCTTCAACTGGCGCTGAAGCTGT
 GGAAGGTGGTAGACATCAGAAGGGGTTAGGCCGTGCAGTCTTTGAGCTGGAATAAGTGGAGGCGATTC
 TACGCTGACCTGTCAACATCAGTCCCCTCTCTCAACGGTGAATAAGTGGAGGCGTTTGAAGAGCTAGATT
 CAGCACCTTTAGAGAAAAGTTCTACTGCCGATGCTGAGCTTGTCCATCAGAATGGCAGGAATTTACAG
 GTCTTCTGAAGATGGCGTTGTTAGAAAAGAGGCGACAAGACGATACTGATCAGGGAAGACAGACAGAAAAT
 TCAACTGAAGATGACAGACTGTGCTCCAGGCCATGTTGAGCAAAAATACTAGTGTAGAGCCAAACCACATG
 GAAGTTCTCCTGAACAGGTAGTAAGGCCAAAAGTTAGAAAAGTGATAAGTTCAAGCCAGGTGGACCAAGA
 AATTGGTTTTAATAGGCACGAGGCTAAGCAGAGAAGCGTTCAGAGATGGAGAGAGGCTTTGGAAGTGGAG
 GAGTGCAGTTCAGATGACCCTATAATAAGTGTGACGATTATGATGGAGACCAGCACTGCATGTTCTCTAA
 CTCCAACCTTACTCAAGAGTTACACAAAGGGAGACAGAACGGAATCGTGTAAACATCAGAAAATGGAGCTAC
 AGCTTCAGGACGGCAAGAATCTCGGGACAATGCCTTTTTGAATGCCTGCGGAGAGTATTACCAACTCTTT
 GACAAAGATGAAGACAGGGAACAGACATCCTTGAAGAGGGAGAGATCCCTTGGTTACAGTACAATGAGG
 TCAATGAGAGCAGCAGCGATGAAGGGAATGAGCCTGCCAATGAGTTTGCACAGCCGGAAGCTTTCATGTT
 GGATGGGAACAACAACCTTGAAGCAGCTCGAGCGTGAAGACTTGGATGTGGACTGGAGCCTGTTT
 GATGGTTTTGCAGACGGACTTGGAGTTGCTGAAGCTATTTCTTATGTGGATCCTCAGTTCCTTACCTACA
 TGGCACTAGAAGAGCGCTTAGCCCAGGCTATGGAGACTGCGCTGGCACATTTAGAGTCCCTTGCAGTAGA
 CGTTGAGGTGGCCAAATCCACTGCCAGTAAGGAAAGCATTGATGGGCTTCCAGAGACTCTGGTTCTAGAG
 GACCACACGCCATCGGCCAGGAGCAGTGTGCCATCTGCTGCAGCGAGTACATCAAGGATGACATTG
 CCACAGAGCTGCCTTGCATCACTTCTTTCATAAGCCCTGTGCTCCATCTGGCTACAGAAGTCCGGAAC
 ATGCCCTGTGTGCCCGCCGTCACCTCCCACCTGCAGTTATTGACGCATCTGCAGCTGCTTCTCTGACCT
 GACCCTGATGCCTCGCCTGCAAATGACAATGCTGAAGAAGCCCCA

ACGCGTACGCGGCCGCTCGAG – GFP Tag – GTTTAA

Protein Sequence:

>MG209720 representing BC017130
 Red=Cloning site Green=Tags(s)

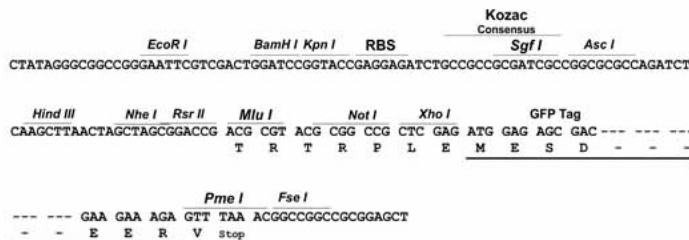
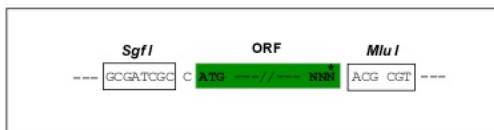
MSQYTEKEPSVMDQESSKAAWPKPAGGYQITIGRRYGRRHAYVSVFKPCMTRHERSLGRAGDDYEVLELDD
 VPKENTSGSSSLDQVHPALPNEPTVEKSETEISTCGPALNQSTESSPSIATVCHSEEVRETLESNTNLHN
 RTETEHTPAVCNVSSVQNGIMLVHTDSYDPDSKHDENGLQLGAEAVEGGRHQKGLGRAVFELNGEAEI
 YADLSPVPSLNGEISEAFEELDSAPLEKSSTADAELVHQNGQEFQRSSDGVVRKRRQDDTDQGRQTEN
 STEDADCAPGHVEQNTSDRANHGGSSPEQVVRPKVRKVISSSQVDQEIFGNRHEAKQRSVQRWREALEVE
 ECSSDDPIIKCDDYDGDHDMFLTPYSRVTQRETERNRVTSENGATASGRQESRDNFVWACGEYYQLF
 DKDEDREQTSLEEGERIPWLQYNEVNESSDEGNEPANFAQPEAFMLDGNLLEDSSVSELDLVDWLSLF
 DGFADGLGVAEAI SYVDPQFLTYMALEERLAQAMETALAHLESLAVDVEVANPPASKESIDGLPETLVLE
 DHTAIGQEQQCPICSEYIKDDIATELPCHHFFHKPCVSIWLQKSGTFCVRRHFPFAVIDASAAASDP
 DPDASPANDNAEEAP

TRTRPLE – GFP Tag – V

Restriction Sites: SgfI-MluI

Cloning Scheme:

Cloning sites used for ORF Shutting:



ACCN: BC017130

ORF Size: 1937 bp

OTI Disclaimer: The molecular sequence of this clone aligns with the gene accession number as a point of reference only. However, individual transcript sequences of the same gene can differ through naturally occurring variations (e.g. polymorphisms), each with its own valid existence. This clone is substantially in agreement with the reference, but a complete review of all prevailing variants is recommended prior to use. [More info](#)

OTI Annotation: This clone was engineered to express the complete ORF with an expression tag. Expression varies depending on the nature of the gene.

Components: The ORF clone is ion-exchange column purified and shipped in a 2D barcoded Matrix tube containing 10ug of transfection-ready, dried plasmid DNA (reconstitute with 100 ul of water).

Reconstitution Method:

1. Centrifuge at 5,000xg for 5min.
2. Carefully open the tube and add 100ul of sterile water to dissolve the DNA.
3. Close the tube and incubate for 10 minutes at room temperature.
4. Briefly vortex the tube and then do a quick spin (less than 5000xg) to concentrate the liquid at the bottom.
5. Store the suspended plasmid at -20°C. The DNA is stable for at least one year from date of shipping when stored at -20°C.

RefSeq: [BC017130](#), [AAH17130](#)

RefSeq Size: 2595 bp

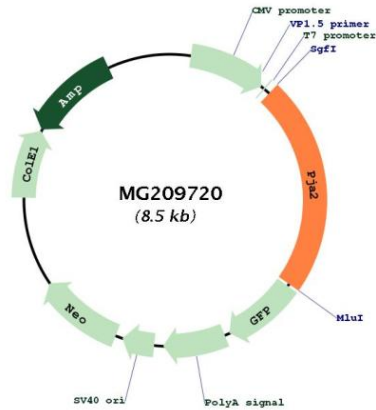
RefSeq ORF: 1937 bp

Locus ID: 224938

Cytogenetics: 17 E1.1

Gene Summary:

Has E2-dependent E3 ubiquitin-protein ligase activity. Responsible for ubiquitination of cAMP-dependent protein kinase type I and type II-alpha/beta regulatory subunits and for targeting them for proteasomal degradation. Essential for PKA-mediated long-term memory processes. Through the ubiquitination of MFHAS1, positively regulates the TLR2 signaling pathway that leads to the activation of the downstream p38 and JNK MAP kinases and promotes the polarization of macrophages toward the pro-inflammatory M1 phenotype.[UniProtKB/Swiss-Prot Function]

Product images:

Circular map for MG209720