

Product datasheet for **MG209711**

Dlat (NM_145614) Mouse Tagged ORF Clone

Product data:

Product Type:	Expression Plasmids
Product Name:	Dlat (NM_145614) Mouse Tagged ORF Clone
Tag:	TurboGFP
Symbol:	Dlat
Synonyms:	6332404G05Rik; DLTA; PDC-E2
Mammalian Cell Selection:	Neomycin
Vector:	pCMV6-AC-GFP (PS100010)
E. coli Selection:	Ampicillin (100 ug/mL)



[View online »](#)

ORF Nucleotide Sequence:

>MG209711 representing NM_145614
 Red=Cloning site Blue=ORF Green=Tags(s)

TTTTGTAATACGACTCACTATAGGGCGGCCGGAATTCGTCGACTGGATCCGGTACCGAGGAGATCTGCC
 GCC**CGCATCGCC**

ATGTGGCGCTGTGCGCGGAGGGCGCGGAGTGTGTGCCAGGGATGGGTTCCAGGGCTCGGTGGCGCG
 CCTTGAAGGAAGCCCCGGGGCCCCATGCGGGAGCCCGCGGATTGGCCCCGCTGCGGTCCGTTGCGGTAG
 TGGGATCCCCCGCTATGGGGTCCGCTCCTTGTGCGGCTGGAGCTCCGGCTCCGGCACTGTCCCGCTAAC
 CGCTTGTGCGACAACCTCTGGGGTCCGCCAGCCCGCGCTTTACAGCCTCCCTCCGCATCAGAAGGTTT
 CATTACCTTCCCTTCCCTACAATGCAGGCAGGCACCATAGCCCGCTGGGAAAAAAGAAGGGGAAAA
 AATCAGTGAGGGTGTCTAATTGCAGAGGTTGAAACTGATAAAGCCACTGTTGGGTTTGGAGCCTGGAG
 GAGTGCTATATGGCCAAGATCCTTGTTCCTGAAGGGACCAGAGATGTTCCAGTTGGGTCCATCATCTGTA
 TCACAGTTGAAAAGCCTCAGGATATTGAGGCCTTAAAAATTATACATTGGATTTGGCGGCGCAGCTGC
 CCCACAGGCAGCCCCAGCTGCAGCCCCAGCTCCAGCTGCTGCCAGCGGCACCTTCTGCAAGCGCTCCC
 GGTAGCTCCTATCCTACTCATATGCAGATTGTTCTTCTGCCCTCTCCCAACCATGACCATGGGCACGG
 TCCAGAGGTGGGAAAAGAAAGTGGGCGAGAAGCTGAGTGAAGGAGACTTGTGGCAGAGATAGAGACCGA
 CAAGGCCACCATAGGCTTTGAAGTACAAGAAGAAGGTTATCTGGCAAAAATCCTGGTCCCTGAAGGCACA
 AGGGATGTTTCTCTGGGAGCTCCACTATGTATCATAGTAGAAAAACAGGAAGATATAGCAGCATTTCGAG
 ACTACAGGCCAACAGAAGTGACCAGCTTAAAGCCACAGGCAGCACCACCTGCCCAACCCCGGTGGCAGC
 TGTTCTCCCACTCCCAGCCTGTAGCACCTACCCCTCAGCTGCTCCTGCTGGACCAAGGGAAGGGTG
 TTCGTTAGTCTCTTGCAGAAGAAGTTGGCAGCAGAGAAAGGGATTGACCTCACCAAGTTAAAGGGACGG
 GACCAGAAGGCAGAATCATCAAGAAGGACATTGACTCTTTTGTGCCTTCTAAGGCTGCTCCTGCTGCAGC
 AGCTGCCATGGCTCCCCGGGTCCAAGAGTGGCACCAGCTCCTGCAGGTGTCTTACAGACATCCCCATC
 AGCAACATTCGTCGAGTGATTGCGCAGAGGCTCATGCAGTCAAGCAGACTATACCTCATTATTACCTTT
 CTGTGATGTAATATGGGAGAGGTGCTGTTGGTACGGAAGGAACTTAATAAGATGCTTGAAGGAAAGG
 GAAAATCTCCGTCAACGACTTCATTATAAAGGCTTCAGCTTTGGCCTGTCTGAAAGTTCCCGAAGCAAAC
 TCGTCTTGGATGGACACAGTTATAAGGCAAAATCATGTGGTTGACGTGAGTGTGCTGTCAGTACCCCTG
 CAGGACTTATCACCCCTATTGTGTTAATGCACACATAAAAGGACTGGAAACCATTGCTAGTGATGTTGT
 TTCTTTAGCTCCAAAGCGAGAGAGGGTAAACTCAGCCTCATGAGTCCAGGGTGAACATTTACAATC
 TCCAATTAGGGATGTTTGAATTAAGAATTTCTCTGCAATTATTAATCCACCTCAGGCATGATTTCTGG
 CAATCGGTGCTTACAGAGATAAACTGATCCAGCAGATAATGAGAAAGGCTTTGATGTGGCTAGTGTGAT
 GTCGTTACACTCAGCTGTGATCATCGAGTTGTGGATGGAGCAGTTGGAGCCAGTGGCTTGTGAATTC
 AAAAGTACCTTGAAGCCTATAACTATGTTGTTA

ACGCGTACGCGGCCGCTCGAG – GFP Tag – GTTTAA

Protein Sequence:

>MG209711 representing NM_145614
 Red=Cloning site Green=Tags(s)

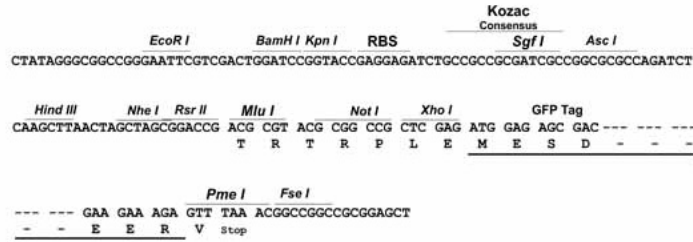
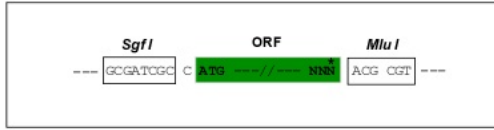
MWRVCARRARSVPRDGRFRARWAALKEGPGAPCGSPRIGPAAVRCGSGIPRYGVRSLCGWSSGSGTVPRN
 RLLRQLLGSPRRSYSLPPHQVPLPSLSPTMQAGTIARWEKKEGEKISEGDLIAEVETDKATVGFESLE
 ECYMAKILVPEGTRDVPVGSIIICITVEKPQDIEAFKNYTLDLAAAAAPQAAPAAAPAPAAAPAPSASAP
 GSSYPHMQIVLPALSPMTMTGTVQRWEKKVGEKLSEGDLAEIETDKATIGFEVQEEGYLAKILVPEGT
 RDVPLGAPLCIIIVEKQEDIAAFADYRPTVETSLKPQAAPPAPPPVAAPVPTPQPVPAPSAAPAGPKGRV
 FVSPLAKLAAEKIDLTQVKGTGPEGRIIKKIDSFVPSKAAPAAAAAMPPGPRVAPAPAGVFTDIPI
 SNIRRVIAQRLMQSKQTI PHYYSVDVNMGEVLLVRKELNKMLEGKGKISVNDFIKASALACLKVPEAN
 SSWMDTVIRQNHVVDVSVAVSTPAGLITPIVFNAHIKGLETIASDVVSLASKAREGKLQPHFQGGFTFI
 SNLGMFGIKNFSAIINPPQACILAI GASEDKLIPADNEKGFVDVASVMSVTLSCDHRVVDGAVGAQWLAEF
 KKYLEKPITMLL

TRTRPLE – GFP Tag – V

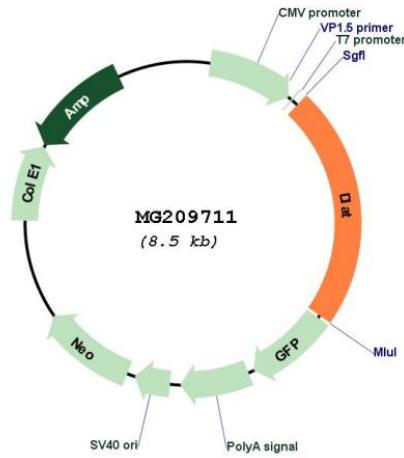
Restriction Sites: SgfI-MluI

Cloning Scheme:

Cloning sites used for ORF Shutting:



Plasmid Map:



ACCN: NM_145614

ORF Size: 1926 bp

OTI Disclaimer:	The molecular sequence of this clone aligns with the gene accession number as a point of reference only. However, individual transcript sequences of the same gene can differ through naturally occurring variations (e.g. polymorphisms), each with its own valid existence. This clone is substantially in agreement with the reference, but a complete review of all prevailing variants is recommended prior to use. More info
OTI Annotation:	This clone was engineered to express the complete ORF with an expression tag. Expression varies depending on the nature of the gene.
Components:	The ORF clone is ion-exchange column purified and shipped in a 2D barcoded Matrix tube containing 10ug of transfection-ready, dried plasmid DNA (reconstitute with 100 ul of water).
Reconstitution Method:	<ol style="list-style-type: none">1. Centrifuge at 5,000xg for 5min.2. Carefully open the tube and add 100ul of sterile water to dissolve the DNA.3. Close the tube and incubate for 10 minutes at room temperature.4. Briefly vortex the tube and then do a quick spin (less than 5000xg) to concentrate the liquid at the bottom.5. Store the suspended plasmid at -20°C. The DNA is stable for at least one year from date of shipping when stored at -20°C.
RefSeq:	NM_145614.4
RefSeq Size:	4034 bp
RefSeq ORF:	1929 bp
Locus ID:	235339
UniProt ID:	Q8BMF4
Cytogenetics:	9 A5.3
Gene Summary:	The pyruvate dehydrogenase complex catalyzes the overall conversion of pyruvate to acetyl-CoA and CO ₂ , and thereby links the glycolytic pathway to the tricarboxylic cycle. [UniProtKB/Swiss-Prot Function]