

Product datasheet for **MG209706**

Ivns1abp (NM_054102) Mouse Tagged ORF Clone

Product data:

Product Type:	Expression Plasmids
Product Name:	Ivns1abp (NM_054102) Mouse Tagged ORF Clone
Tag:	TurboGFP
Symbol:	Ivns1abp
Synonyms:	1190004M08Rik; 1700126I16Rik; AA960440; HSPC068; mKIAA0850; ND1; Nd1-L; Nd1-S; NS-1; NS1-BP
Mammalian Cell Selection:	Neomycin
Vector:	pCMV6-AC-GFP (PS100010)
E. coli Selection:	Ampicillin (100 ug/mL)



[View online »](#)

ORF Nucleotide Sequence:

>MG209706 representing NM_054102
 Red=Cloning site Blue=ORF Green=Tags(s)

TTTTGTAATACGACTCACTATAGGGCGGCCGGAATTCGTCGACTGGATCCGGTACCGAGGAGATCTGCC
 GCC**CGGATCGCC**

ATGATTCCAATGGATATTTGATGTTTGAAGATGAAAATTTTATTGAATCATCTGTTGCCAAATTAATG
 CCTTGAGGAAGAGTGGGAGTTCTGTGATGTTGACTTCAGTCTGTGGCCATGAGATGCTAGCACACAG
 GGCAGTCTGGCTTGCTGTAGCCCTATCTATTTGAAATCTCAATAGTGACAGTGACCCTCATGGAGTT
 TCTCATGTGAAGTTGGATGATCTCAATCCAGAAGCTGTTGAAGTCTTGCTGAATTATGCATACACGGCTC
 AGTTGAAAGCTGATAAGGAATTAGTAAAAGATGTTTATTCTGCAGCCAAGAAGCTGAAGATGGACCGAGT
 CAAGCAGGTCTGCGGAGATTATTTACTATCTAGAATGGATGTTACTAGCTGCATCTTACCAGAAATTTT
 GCAAGTTGATGGGAGACTCCCGTTTGTGAATAAAGTTGACGCTTATATTCAGGAGCATTGTGTACAAA
 TTTCAGAAGAGGAGGAATTTCTAAGCTCCGAGACTAAAGTTGGAGTAATGCTTGAAGATAATGTGTG
 CTTGCCACGAAATGGCAAGTTGTATACAAAGGTAATCAACTGGTGCAGCTAGCATCTGGGAGAATGGA
 GACAGCCTGGAGGAGCTCATGGAAGAGGTTCAAACCTTGTACTACTCAGCTGATCACAAAGCTGCTTGATG
 GGAACCCACTAGATGGACAGGCTGAGGTGTTTGGCAGTGTGATGACCACATTCAGTTTGTGCAGAAAAA
 GCCACCCCGTGAGAAATGGCCATAAGCAGATAAGTGGCAGTTCCTACTGGATGTCTCTCTTCTCCAAATGCT
 TCAATGCAAAGCCCTAAGCATGAGTGGAAAAATCGTTGCTTCAAAAAGACTTCAAATAACACTTACTTGT
 GCCTGGCTGTGCTGGACAGTACATTCTGTGTCATTTTCCCTCATGGGCGGAACAGTCCACAGAGCTCACC
 AACAGTACTCCAAAAGTGAAGAGTTAAGCTTCGAGATGCAACCAGATGAGCTTCTAGAAAAGCCC
 ATGCTCTCCATGCAGTACGCACGGTCTGGACTAGGACAGCAGAGATGAATGGCAAACTCATAGCTGCAG
 GTGGTTATAACAGAGAGGAATGTCTTCAACAGTTGAATGCTATGATCCACATACAGACTGCTGGTCCCT
 CCTTGCTCCCATGAGAACAACCAAGAGCCCGCTTCAAATGGCTGTGCTGATGGGACAGCTCTATGTGGTG
 GGTGGATCAAATGGACACTCAGATGACCTGAGTTGTGGAGAAATGTATGATCCAACATTGATGACTGGA
 CCCCTGTTCCAGAGCTGAGAACCAACCGTTGTAATGCAGGAGTGTGTGCTCTGAATGGGAAATGTACAT
 TGTTGGTGGCTGATCCATATGGTCAAAGGGCCTGAAAAATGTGATGATTTTGTATCTGTAACGAAG
 TCATGGACAAGCTGTGCTCCTCTAACATTCGTCGACACCAGTCTGCAGTTTGTGAACCTGGTGGTTATT
 TGTATATAATTGGAGGTGCAGAATCTTGAATTTGCTGAACACAGTAGAACGATAACAATCCTGAAAAACA
 CACCTGGACTTTAATTGCATCCATGAATGTGGCAGGCGAGGGGCTGGAGTCGCTGTGCTTGTGAAAA
 CTGTTTGTAGGTGGTGGCTTTGATGGTTCTCACCCATCAGTTGTGTGGAGATGTATGATCCAATAGAA
 ATGAATGGAAGATGATGGGAAATGACTTCACCAAGGAGCAATGCTGGGATCACAACTGTAGGGAATAC
 CATTTATGCAGTGGGAGGATTCCATGGCAATGAGTTTCTGAATACTGTGGAAGTCTACAACCCCTCAGTCA
 AATGAGTGGAGCCCTTACACAAAGATTTTCCAGTTT

ACGCGTACGCGGCCGCTCGAG – GFP Tag – GTTTAA

Protein Sequence:

>MG209706 representing NM_054102
 Red=Cloning site Green=Tags(s)

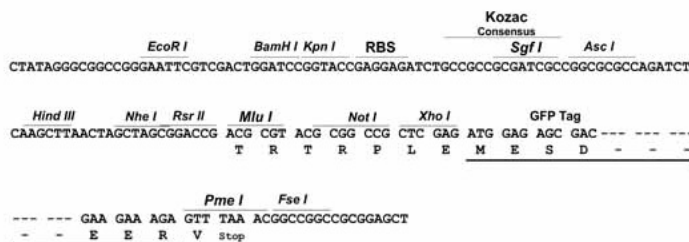
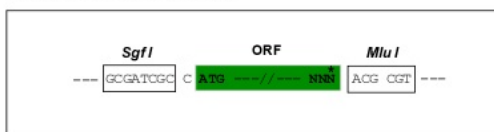
MIPNGYLMFEDENFIESSVAKLNALRKSGQFCDVRLQVCGHEMLAHRVLAACSPYLFEIFNSDSDPHGV
 SHVKLDDLNPEAVEVLLNYAYTAQLKADKELVKDVYSAKKLKMDRVKQVCGDYLLSRMDVTSCISYRNF
 ASCMGDSRLLNKVDAYIQEHLQISEEEFLKLPRLKLEVMLEDNVCLPNSGKLYTKVINWVQRSIWENG
 DSLEELMEEVQTLYYADHKLLDGNPLDGQAEVFGSDDDHIFVQKPPRENGHKQISGSSTGCLSSPNA
 SMQSPKHEWKIVASEKTSNNTYLCLAVLDSTFCVIFLHGRNSPQSPTSTPKLSKLSFEMQPDLELEKP
 MSPMQYARSLGTAEMNGKLIAGGYNREECLRTVECYDPHTDHSFLAPMRTPRARFQMAVLMGQLYVV
 GGSNGHSDDLSCGEMYPNIDDWTPVPELRTNRCNAGVCLNGLYIVGGSDPYGQKGLKNCDVDFPVTK
 SWTSCAPLNIRRHQSAVCELGGYLYIIGGAESWNCLNTVERYNPENNTWTLIASMNVARRGAVAVLDGK
 LFGVGGFDGSHAI SCVEMYDPTRNEWKMMGNMTPRSNAGITTVGNTIYAVGGFDGNEFLNTVEVYNPQS
 NEWSPTYKIFQF

TRTRPLE – GFP Tag – V

Restriction Sites: SgfI-MluI

Cloning Scheme:

Cloning sites used for ORF Shuttling:



ACCN: NM_054102

ORF Size: 1926 bp

OTI Disclaimer: The molecular sequence of this clone aligns with the gene accession number as a point of reference only. However, individual transcript sequences of the same gene can differ through naturally occurring variations (e.g. polymorphisms), each with its own valid existence. This clone is substantially in agreement with the reference, but a complete review of all prevailing variants is recommended prior to use. [More info](#)

OTI Annotation: This clone was engineered to express the complete ORF with an expression tag. Expression varies depending on the nature of the gene.

Components: The ORF clone is ion-exchange column purified and shipped in a 2D barcoded Matrix tube containing 10ug of transfection-ready, dried plasmid DNA (reconstitute with 100 ul of water).

Reconstitution Method:

1. Centrifuge at 5,000xg for 5min.
2. Carefully open the tube and add 100ul of sterile water to dissolve the DNA.
3. Close the tube and incubate for 10 minutes at room temperature.
4. Briefly vortex the tube and then do a quick spin (less than 5000xg) to concentrate the liquid at the bottom.
5. Store the suspended plasmid at -20°C. The DNA is stable for at least one year from date of shipping when stored at -20°C.

RefSeq: [NM_054102.2](#), [NP_473443.2](#)

RefSeq Size: 3513 bp

RefSeq ORF: 1929 bp

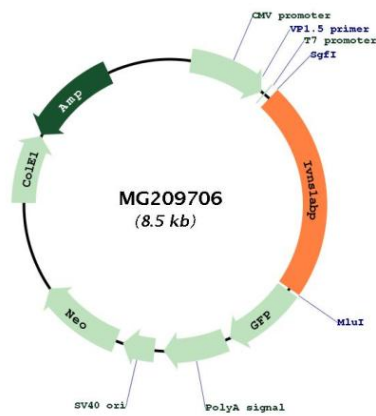
Locus ID: 117198

UniProt ID: [Q920Q8](#)

Cytogenetics: 1 G1

Gene Summary: Involved in many cell functions, including pre-mRNA splicing, the aryl hydrocarbon receptor (AHR) pathway, F-actin organization and protein ubiquitination. Plays a role in the dynamic organization of the actin skeleton as a stabilizer of actin filaments by association with F-actin through Kelch repeats (PubMed:12213805, PubMed:16317045). Protects cells from cell death induced by actin destabilization (PubMed:16952015). Functions as modifier of the AHR/Aryl hydrocarbon receptor pathway increasing the concentration of AHR available to activate transcription (By similarity). In addition, functions as a negative regulator of BCR(KLHL20) E3 ubiquitin ligase complex to prevent ubiquitin-mediated proteolysis of PML and DAPK1, two tumor suppressors (By similarity). Inhibits pre-mRNA splicing (in vitro) (By similarity). [UniProtKB/Swiss-Prot Function]

Product images:



Circular map for MG209706