

Product datasheet for **MG209702**

Capn6 (NM_007603) Mouse Tagged ORF Clone

Product data:

Product Type:	Expression Plasmids
Product Name:	Capn6 (NM_007603) Mouse Tagged ORF Clone
Tag:	TurboGFP
Symbol:	Capn6
Mammalian Cell Selection:	Neomycin
Vector:	pCMV6-AC-GFP (PS100010)
E. coli Selection:	Ampicillin (100 ug/mL)



[View online »](#)

ORF Nucleotide Sequence:

>MG209702 representing NM_007603
 Red=Cloning site Blue=ORF Green=Tags(s)

TTTTGTAATACGACTCACTATAGGGCGGCCGGAATTCGTCGACTGGATCCGGTACCGAGGAGATCTGCC
 GCC**CGGATCGCC**

ATGGGTCCTCTCTGAAGCTCTTCAAAAACCAGAAGTACCAAGAACTGAAGCAGGAGTGCATGAAGGATG
 GCCGCCTTTTCTGTGACCCAACCTTCTACCGGAGAATGATTCTCTGTTTTTCAACCGGCTGCTTCTCGG
 GAAGGTGGTGTGAAGCGTCCACAGGACATTTCTGATGACCCCACTGATTGTGGGCAACATCAGCAAC
 CACCAGCTGATCCAGGGCAGATTGGGAACAAGGCAATGATCTCTGCATTTTCTGTTTGGCTGTTGAGG
 AGTCACACTGGACAAAGGCAATCCCAACCACAAGGATCAGGAATGGGATCCTCGAAAGCCAGAGAAATA
 CGCTGGAATCTTTCACTTCCGCTTCTGGCATTGGAGAATGGACCGAGGTGGTATTGATGACTTGCTT
 CCCACCATCAACGGAGATCTGGTCTTCTCATTCTCCACCTCCATGAATGAGTTTTGGAATGCTCTACTGG
 AAAAAGCGTATGCAAAGCTGCTGGGCTGTTATGAGGCTTTGGATGGTCTGACCATCACTGATATCATCAT
 GGACTTCACTGGCACACTGGCTGAAATCATTGACATGCAGAAAGGACGATACACTGATCTTGTGAGGAG
 AAGTACAAGCTGTTTGGAGAAGTACAAAACGTTACCAAAAGGAGGTCTAATTTGCTGCTCCATTGAGT
 CTCCCAGCCAGGAGGAACAAGAAGTTGAAACAGACTGGGGACTACTGAAGGGTTATACCTACACCATGAC
 TGATATTCGAAAGCTCCGCTCTCGGAGAAAGACTTGTGGAAGTCTTCACTACTGAGAAGCTGTATATGGTT
 CGCCTAAGGAACCCATTGGGAAGACAGGAATGGAGTGGCCCTGGAGTGAATTTTCAAGAGGAGTGGCAGC
 AACTGACTGTAACAGATCGCAAGAACCTAGGACTTGTATGTCTGATGATGGAGAATTTTGGATGAGTCT
 GGAAGATTTTGGCACAACCTTCCAAAAGTGAATGTCTGCCGCAATGTGAATAATCTGTTTTTGGCCGC
 AAGGAGCTGGAATCAGTGGTGGGATGTTGGACTGTGGATGATGACCTCTGATGAACCGATCAGGAGGTT
 GCTATAACAACCGTGATACCTTCTTGCAGAATCCTCAGTACATTTTCACTGTGCCCGAGGATGCCATAA
 AGTCATCATGTCACTGCAACAGAAGGACCTACGCACTTACCGCCGAATGGGAAGACCTGATAATTACATC
 ATTGGTTTTGAGCTCTTCAAGGTGGAGATGAACCGAAGGTTCCGCTTCCACCATCTGTATATTCAGGAGC
 GTGCTGGGACTTCCACTTATATCGACACCCGACTGTGTTTCTGAGCAAGTATCTGAAGAAGGGCAGCTA
 CGTGCTTGTTCACCATGTTCCAACATGGCCGTACCAGTGAATTTCTGCTGAGGATCTTCTCTGAAGTG
 CCCGTCACAGTCAAGGAACTGACCTTGGACATGCCAAGATGTCTTGTGGAACCTGGCAGCTGGCTACC
 CAAAGGTGTTACCCAGATCACTGTCCACAGTCTGAGGGCTGGAGAAGAAGTATGCCAATGAACTGT
 CAATCCATATCTGATCATCAAATGTGAAAGGAGGAAGTCCGTTCCCTGTCCAGAAGAATACTGTGCAT
 GCCATTTTGGACAGCAGGCCATTTTCTACAGAAGGACCACTGACATTCCTATTATCATCCAGGTGTGGA
 ACAGCAGAAAATTCTGTGATCAGTTCCTGGGGCAGGTTACTCTCGATGCTGACCCAGCGACTGCCGTGA
 TCTGAAATCTCTGTACCTGCGTAAGAAGGTGGTCCACTGCCAAAGTCAAGCAAGGTACATCAGCTTC
 AAAGTTATCTCTAGCGATGATCTCACTGAGCTC

ACGCGTACGCGGCCGCTCGAG – GFP Tag – GTTTAA

Protein Sequence:

>MG209702 representing NM_007603
 Red=Cloning site Green=Tags(s)

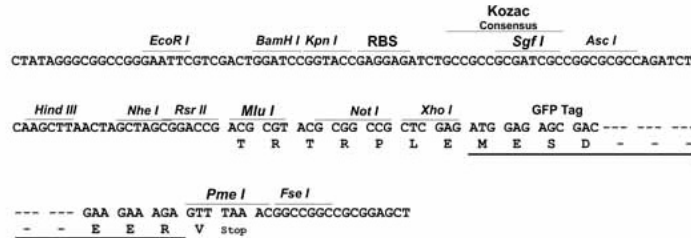
MGPPLKLFKNQKYQELKQECMKDGRFLCDPTFLPENSLEFFNRLLPKVVVWKRQDISDDPHLIVGNISN
 HQLIQGRLGNKAMISAFSCLAVQESHWTKAIPNHKQDEWDPKPEKYAGIFHFRFWHFGWEVVIDDLL
 PTINGDLVFSFSTSMNEFWNALLEKAYAKLLGCYEALDGLTITDIIMDFGTGLAEIIDMQKGRYTDLVEE
 KYKLFGEYKTFKGGILCCSIESPSQEEQEVETDWGLLKGYTYTMDIRKRLRGERLVEVFSTEKLYMV
 RLRNPLGRQEWSPWSEISEEWQQLTVDRKNLGLVMSDDGEFWMSEDFCHNFHKLNVCRNVNPNVFG
 KELESVVGCVTVDDPMLNRSRGGCYNRDTFLQNPQYIFTVPEDGHKIVMSLQQKDLRTYRRMGRP
 DNYIIGFELFKVEMNRRFRLHHLIYIQRAGTSTYIDTRTVFLSKYLKGSYVLVPTMFQHGRTSEFLLRIFSEV
 PVQLRELTLDMPKMSCWNLARGYPKVVVTQITVHSAEGLKKYANETVNPYLIKCKGEEVRSVPQKNTVH
 AIFDTQAIFYRRTDIPIIIQVWNSRKFCDQFLGQVTLADPSCDRDLKSLYLKKGKGP
 TAAKVKQGHISFKVISSDDLTEL

TRTRPLE – GFP Tag – V

Restriction Sites: SgfI-MluI

Cloning Scheme:

Cloning sites used for ORF Shutting:



ACCN: NM_007603

ORF Size: 1923 bp

OTI Disclaimer: The molecular sequence of this clone aligns with the gene accession number as a point of reference only. However, individual transcript sequences of the same gene can differ through naturally occurring variations (e.g. polymorphisms), each with its own valid existence. This clone is substantially in agreement with the reference, but a complete review of all prevailing variants is recommended prior to use. [More info](#)

OTI Annotation: This clone was engineered to express the complete ORF with an expression tag. Expression varies depending on the nature of the gene.

Components: The ORF clone is ion-exchange column purified and shipped in a 2D barcoded Matrix tube containing 10ug of transfection-ready, dried plasmid DNA (reconstitute with 100 ul of water).

- Reconstitution Method:
1. Centrifuge at 5,000xg for 5min.
 2. Carefully open the tube and add 100ul of sterile water to dissolve the DNA.
 3. Close the tube and incubate for 10 minutes at room temperature.
 4. Briefly vortex the tube and then do a quick spin (less than 5000xg) to concentrate the liquid at the bottom.
 5. Store the suspended plasmid at -20°C. The DNA is stable for at least one year from date of shipping when stored at -20°C.

RefSeq: [NM_007603.3](#), [NP_031629.3](#)

RefSeq Size: 3579 bp

RefSeq ORF: 1926 bp

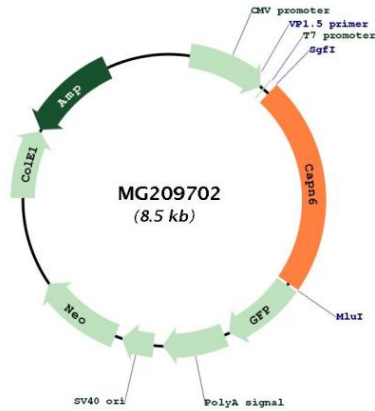
Locus ID: 12338

UniProt ID: [O35646](#)

Cytogenetics: X F2

Gene Summary: Microtubule-stabilizing protein that may be involved in the regulation of microtubule dynamics and cytoskeletal organization. May act as a regulator of RAC1 activity through interaction with ARHGEF2 to control lamellipodial formation and cell mobility. Does not seem to have protease activity as it has lost the active site residues.[UniProtKB/Swiss-Prot Function]

Product images:



Circular map for MG209702