

## Product datasheet for **MG209687**

### Capn5 (NM\_007602) Mouse Tagged ORF Clone

#### Product data:

Product Type:	Expression Plasmids
Product Name:	Capn5 (NM_007602) Mouse Tagged ORF Clone
Tag:	TurboGFP
Symbol:	Capn5
Synonyms:	nCL-3
Mammalian Cell Selection:	Neomycin
Vector:	pCMV6-AC-GFP (PS100010)
E. coli Selection:	Ampicillin (100 ug/mL)



[View online »](#)

**ORF Nucleotide Sequence:**

>MG209687 representing NM\_007602  
 Red=Cloning site Blue=ORF Green=Tags(s)

TTTTGTAATACGACTCACTATAGGGCGGCCGGAATTCGTCGACTGGATCCGGTACCGAGGAGATCTGCC  
 GCCCGCATCGCC

ATGTTCTCCTGCGCAAGGCCTATGAGGACCAGAACTACTCGGCCTGAAGCGGGCCTGCCTGCGCAAGA  
 AGGTGCTGTTTCGAGGATCCCCTCTCCCTGCCACCGACGACTCCCTTTACTATAAAGGGCACCCAGGGCC  
 CACAGTCAGGTGGAAGCGGCCTAAGGATATCTGCGACGATCCCCGGCTCTTCGTAGATGGCATCAGCTCC  
 CATGACCTGCACAGGGCCAGGTGGGCAACTGCTGGTTTGTGGCTGCCTGCTCATCACTGGCCTCCCGAG  
 AGTCACCTGGCAGAAGGTCATCCAGACTGGAAGGAGCAGGAATGGAACCCCGAGAAGCCTGACAGCTA  
 TGCTGGCATCTTCCACTTCAACTTCTGGCGCTTGGGGAGTGGGTGGACGTAATCGTCGATGACCGGCTG  
 CCCACAGTCAACAACCAGCTCATTTACTGCCATTCCAACCCAAAAATGAGTTCTGGTGTGCCCTGGTGG  
 AGAAGGCCTATGCCAAGCTGGCCGGCTGTACCAGGCCCTGGACGGAGGCAACACGGCCGATGCATTGGT  
 GGATTTACAGGTGGTGTCTGAACCCATTGACCTGACCGAGGGGGACTGGCCACTGACGAGGCTAAG  
 AGGAATCAGCTCTTTGAGCGAGTCTGAAGGTGCACAGCAGAGGGCGGCTCATCAGTGCCTCCATCAAGG  
 CTGTGACAGCAGCTGACATGGAGGCCCGCTGGCATGTGGCTGGTGAAGGGCCATGCATACGCTGTCCAC  
 CGATGTGCGCAAGGTGCGCCTGGGCCATGGCCTGCTGGCCTTCTCAAGTCAGAGAAGCTTGATATGATC  
 CGTCTGAGGAACCCCTGGGGCGAGCGGGAGTGGACGGGGCCCTGGAGTGACACGTGACAGGAATGGCAGA  
 AAGTGAGCAAGAGTGAGAGGGAGAAGATGGGCGTGACCGTGCAGGATGATGGGAATTCTGGATGACCTT  
 TGAGGACATGTCCCGTACTTTACTGACATCATTAAATGCCCGCTGATTAACACGTCTACCTGAGCATC  
 CATAAGACATGGGAGGAGCCCGGCTGCATGGTGCCTGGACGAGACATGAGGACCCACAGCAGAACC  
 GTGGAGGCTGCATCAACCACAAGGACACTTTCTCCAGAACCACAGTACGTAATTTGAAGTCAAGAAGCC  
 AGAAGATGAAGTGTGATCAGTATCCAGCAGCGGCCGAAGCGCTCAACTCGCCGGGAGGGCAAGGCGGAG  
 AATCTGGCCATTGGCTTCAACATCTATAAGGTGGAAGAGAACCGCAATACCGTATGCACAGCCTACAGC  
 ATAAGGCCCCAGCTCCATCTACATCAATCCCGCAGCGTTTTTTTTGAGGACAGAGCTGCCCGAGGGCCG  
 CTACGTTATCATCCCTACCACCTTTGAGCCAGGCCACACTGGCGAGTTCTGCTCCGAGTCTTACAGAT  
 GTCCCCTCCAACCGCGGAACACGCCTGGATGAGCCCCCTCGACCTGTTGGAGTTCCCTCTGTGGCT  
 ACCCTCAGCAGGTGGCCAGGTACATGCTCTGGGGCTGCTGGCCTCAAGGACTCCCCAACAGGAGCAAA  
 CTCATATGTGATCATCAAGTGTGAGGGCGAAAAGGTTGCTCAGCTGTGCAGAGAGGGACCTCGACACCA  
 GAGTACAATGTAAGGATCTTCTATCGCAAGAAGCTGGCTCAGCTATCACCTGCGAGTTTGGAAATC  
 ACCGAGTCTGAAGGATGAATTCCTGGCCAGGTGCACCTGAAGACTGCCCGGATGACCTGCGAGGACCT  
 CCACACCTCCATCTCCAGGACCGCAGTAGCCGGCAGCCAGTACCTGCCAGGCATTGTAGCTGTGCGA  
 GTCCTCTGCGAGTGCCTCTCTCACGGCTGTC

ACGCGTACGCGGGCCGCTCGAG – GFP Tag – GTTTAA

**Protein Sequence:**

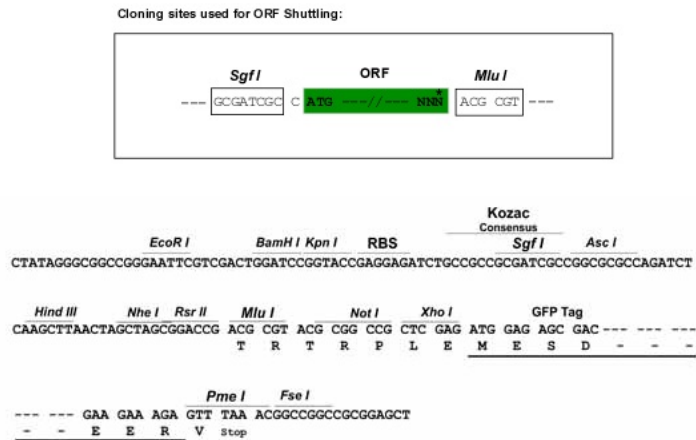
>MG209687 representing NM\_007602  
 Red=Cloning site Green=Tags(s)

MFSCAKAYEDQNYALSALKRACLRKKVLFEDPLFPATDDSLYYKGTGPGTVRWKRPKIDDDPRLFVDGISS  
 HDLHQGQVGNCFVAACSSLASRESLWQKVIPDWKEQEWNPKEPDSYAGIFHFNFWRFGWVDVIVDDRL  
 PTVNNQLIYCHSNSKNEFWCALVEKAYAKLAGCYQALDGGNTADALVDFTTGGVSEPIDL TEGDLATDEAK  
 RNQLFERVLKVHSRGLISASIKAVTAADMEARLACGLVKGHAYAVTDVRKVRLLGHLLAFFKSEKLDMI  
 RL RNPWGEREWTPWSDTSEEWQKVSEREMGVTVQDDGEFWMTFEDMCRYFTDI IICRLINTSYLSI  
 HKTWEEARLHGAWTRHEDPQQNRSGGCINHKDTFFQNPQYVFEVKKPEDEVLISIQRPKRSTRREGKGE  
 NLAIGFNIYKVEENRQYRMHSLQHKAASSIYINSRSVFLRTELPEGRYVIIPFTFEPGHTGEFLLRVFTD  
 VPSNCRELRLEPPRTCWSSLCGYPQQAQVHVLGAAGLKDSPGANSYVI IICKEGEKVRSAVQRGTSTP  
 EYNVKGIFYRKKLAQPITVQVWVHRVLKDEFLGQVHLKTAAPDDLQDLHTLHLQDRSSRQPSDLPGIVAVR  
 VLCSASLTAV

TRTRPLE – GFP Tag – V

Restriction Sites: SgfI-MluI

Cloning Scheme:



ACCN: NM\_007602

ORF Size: 1920 bp

OTI Disclaimer: The molecular sequence of this clone aligns with the gene accession number as a point of reference only. However, individual transcript sequences of the same gene can differ through naturally occurring variations (e.g. polymorphisms), each with its own valid existence. This clone is substantially in agreement with the reference, but a complete review of all prevailing variants is recommended prior to use. [More info](#)

OTI Annotation: This clone was engineered to express the complete ORF with an expression tag. Expression varies depending on the nature of the gene.

Components: The ORF clone is ion-exchange column purified and shipped in a 2D barcoded Matrix tube containing 10ug of transfection-ready, dried plasmid DNA (reconstitute with 100 ul of water).

Reconstitution Method:

1. Centrifuge at 5,000xg for 5min.
2. Carefully open the tube and add 100ul of sterile water to dissolve the DNA.
3. Close the tube and incubate for 10 minutes at room temperature.
4. Briefly vortex the tube and then do a quick spin (less than 5000xg) to concentrate the liquid at the bottom.
5. Store the suspended plasmid at -20°C. The DNA is stable for at least one year from date of shipping when stored at -20°C.

RefSeq: [NM\\_007602.3](#), [NP\\_031628.1](#)

RefSeq Size: 4411 bp

RefSeq ORF: 1923 bp

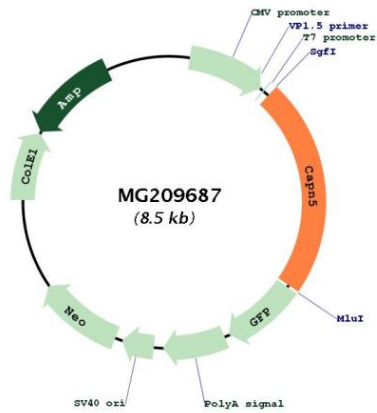
Locus ID: 12337

UniProt ID: [O08688](#)

Cytogenetics: 7 E1

Gene Summary: The protein encoded by this gene is a member of the calpain family of proteins. Unlike many members of the calpain gene family, this gene lacks a calmodulin-like domain, required for calcium binding. Mouse models for Huntington's disease displayed increased levels of the protein encoded by this gene. Alternative splicing results in multiple transcript variants. [provided by RefSeq, Jul 2014]

**Product images:**



Circular map for MG209687