

## Product datasheet for **MG209685**

### **Pck2 (BC010318) Mouse Tagged ORF Clone**

#### **Product data:**

Product Type:	Expression Plasmids
Product Name:	Pck2 (BC010318) Mouse Tagged ORF Clone
Tag:	TurboGFP
Symbol:	Pck2
Synonyms:	1810010O14Rik; 9130022B02Rik; PEPCK-M
Mammalian Cell Selection:	Neomycin
Vector:	pCMV6-AC-GFP (PS100010)
E. coli Selection:	Ampicillin (100 ug/mL)



[View online »](#)

**ORF Nucleotide Sequence:**

>MG209685 representing BC010318  
 Red=Cloning site Blue=ORF Green=Tags(s)

TTTTGTAATACGACTCACTATAGGGCGGCCGGAATTCGTCGACTGGATCCGGTACCGAGGAGATCTGCC  
 GCC**CGGATCGCC**

ATGGCTGTATGTACCTCCCCGGCTGCGGCTTAGCCGGCACGGGCTAAGCCCTGGTGCTGGTCACCGT  
 GCCGTAGCATCCAAACCTGCGTGTCTCAGTGGAGATATGAGTCAGCTGCCGGCTGGAGTTCGAGACTT  
 TGTGGCGCGCAGTGCGCATCTGTGCCAACAGAGGGCATCCACATCTGTGATGGGACCGAGGCTGAGAAC  
 ACTGCCATACTGGCCCTGCTGGAAGAACAGGGTCTTATCCGAAACTCCCCAAGTATAAGAACTGCTGGC  
 TGGCCCGCACAGACCCCAAGGATGTGGCACGGGTAGAAAGCAAGACGGTGATTGTAACCTCTCGCAGCG  
 GGACACAGTGCCTCTCCTGGCTGGTGGGCGAGGGGCGAGCTGGCAACTGGATGTCCCAGATGAGTTC  
 CAGAGAGCTGTGGACGAGAGATCCCAGGATGCATGCAGGGCCGATTATGTATGTGCTTCCATTACGA  
 TGGTCCCGTGGCTCCCCTCTCCCGATTGGAGTGCAGCTCACTGACTCGGTTACGTGGTGGCCAG  
 TATGCGTATTATGACCCGCTTGGGGACACCTGTACTTCAGGCCCTGGGAGATGGTGACTTCACTCAAGTGT  
 CTGCATTCAGTGGCCAGCCCCTGACTGGACATGGGGATCCTGTGGGCCAGTGGCCGTGCAATCCAGAAA  
 AAACCCCTGATTGGCCACGTGCCAGACCAGCGGGAGATCGTCTCCTTCGGCAGCGGCTATGGTGGTAACTC  
 CTTGCTGGGAAGAAGTCTTTGCCCTGCGCATCGCCTCTCGCCTGGCCAGGGATGAGGGCTGGCTGGCA  
 GAGCACATGCTGATTTTGGGCATACCAACCCCTGCAGGGAAAAAGCGCTACGTGGCAGCTGCTTTCCCA  
 GTGCCCTGTGGCAAGACCAATCTGGCCATGATGAGACCTGCATTGCCGGCTGGAAAGTGGAGTGTGTGG  
 GGATGACATCGCCTGGATGAGGTTTGACAGTGAAGGCAACTCCGGGCCATCAACCCTGAGAATGGCTTC  
 TTTGGGTGGCCCTGGTACCTCTGCTGCCACCAATCCAATGCCATGGCCACAATTGAGAGTAACTC  
 TCTTACCAACGTGGCTGAGACCAGTGTGGCGGTGTACTGGGAAGGCATTGACCAGCCTTTCCGCGC  
 TGGTGTACCATAACTCGTGGCTGGGAAAGCCCTGGAACCTGGTGACAAGGAACCCTGTGCACATCCA  
 AACTCGCGCTTTTGTGTCCAGCTCGCCAGTGCCCATCATGGACCCAGCCTGGGAAGCACCAGAAGGTG  
 TCCCTATTGATGCCATCATCTTTGGAGGCCCGACCCAAAGGGTACCCTGGTGTACGAGGCCTTCAA  
 CTGGCGTCATGGGGTGTGTAGGTAGCGCCATGCGCTCTGAGTCCACTGCCGCTGCGGAGCACAAAGGA  
 AAGACCATTATGCATGATCCCTTGGCATGCGGCCTTTTTTGGCTATAACTTTGGACGCTACCTGGAAC  
 ACTGGTTGAGCATGGAGGGACAAAAGGTGCCCGCTGCCTCGTATCTTCCATGTCAATTGGTCCGGAG  
 AGATGAAGCAGGCTGCTTCTGTGGCCAGGCTTTGGAGAGAATGCTCGTGTGCTAGACTGGATCTGCCGA  
 AGATTAGAAGGAGAAGACAGTGCCCAAGAGACTCCCATTGGGCTAGTACCAAAGGAAGGACCCCTGGACC  
 TCAGTGGCCTCAGCGCAGTGGACACCAGTCAGCTGTTCTCCATCCCAAGGACTTCTGGGAGCAGGAGGT  
 TCGTGATATTCGGGGCTACCTGACAGAGCAAGTCAACCAGGACCTGCCCAAGGAGGTGTTGGCTGAGCTC  
 GAGGCTCTGGAAGGACGTGTACAAAAATG

**ACGCGT**ACGCGGCCGCTCGAG – GFP Tag – GTTTAA

**Protein Sequence:**

>MG209685 representing BC010318  
 Red=Cloning site Green=Tags(s)

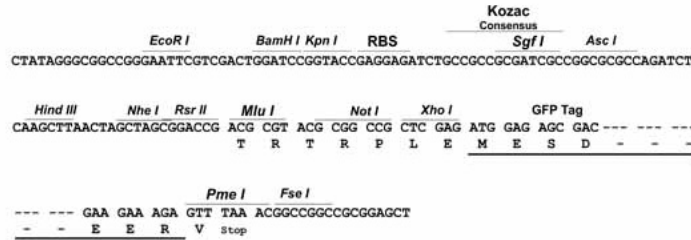
MAAMYLPLRLSRHGLRPWCWSPCRSIQTLRVLSGDMSQLPAGVRDFVARSAHLCPGEGIHICDGTEAEN  
 TAILALLEEQGLIRKLPKYKNCWLARTDPKDVARVESKTVIVTPSQRDVPLLAGGARGQLGNWMSDEF  
 QRAVDERFPGCMQGRIMYVLPFSMGPVGSPLSRIGVQLTDSAYVVASMRIMTRLGTPVLQALGDGDFIKC  
 LHSVQPLTGHGDPVQWPCNPEKTLIGHVPDQREIVSFGSGYGGNSLLGKKCFALRIASRLARDEGWLA  
 EHMLILGITNPAGKKRYVAAAFPSACGKTNLAMMRPALPGWKVECVGDDIAWMRFDSEGLRAINPENG  
 FGVAPGTSAAATNPAMATIQSNTLFTNVAETSDGGVYWEIDQPLPPGVTITSWLGKPKPGDKEPCAHP  
 NSRFCVPARQCPIMDPAWEAPEGVPIIDAIIFGRRPKGVPLVYEAFNWRHGVFVGSAMRSESTAAAHEHG  
 KTIMHDPFAMRPFYGFYNGRYLEHWSMEGQKARLPRIFHVNWFRRDEAGCFLWPGFGENARVLDWICR  
 RLEGEDSAQETPIGLVPKEGALDLSGLSAVDTSQLFSIPKDFWEQEVDRDARGYLTEQVNDLPEVLAEL  
 EALEGRVQKM

**TRTRPLE** – GFP Tag – V

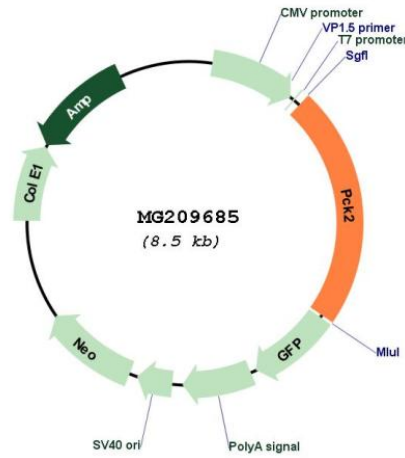
Restriction Sites: SgfI-MluI

Cloning Scheme:

Cloning sites used for ORF Shutting:



Plasmid Map:



ACCN: BC010318

ORF Size: 1920 bp

<b>OTI Disclaimer:</b>	The molecular sequence of this clone aligns with the gene accession number as a point of reference only. However, individual transcript sequences of the same gene can differ through naturally occurring variations (e.g. polymorphisms), each with its own valid existence. This clone is substantially in agreement with the reference, but a complete review of all prevailing variants is recommended prior to use. <a href="#">More info</a>
<b>OTI Annotation:</b>	This clone was engineered to express the complete ORF with an expression tag. Expression varies depending on the nature of the gene.
<b>Components:</b>	The ORF clone is ion-exchange column purified and shipped in a 2D barcoded Matrix tube containing 10ug of transfection-ready, dried plasmid DNA (reconstitute with 100 ul of water).
<b>Reconstitution Method:</b>	<ol style="list-style-type: none"><li>1. Centrifuge at 5,000xg for 5min.</li><li>2. Carefully open the tube and add 100ul of sterile water to dissolve the DNA.</li><li>3. Close the tube and incubate for 10 minutes at room temperature.</li><li>4. Briefly vortex the tube and then do a quick spin (less than 5000xg) to concentrate the liquid at the bottom.</li><li>5. Store the suspended plasmid at -20°C. The DNA is stable for at least one year from date of shipping when stored at -20°C.</li></ol>
<b>RefSeq:</b>	<a href="#">BC010318.1</a>
<b>RefSeq Size:</b>	2143 bp
<b>RefSeq ORF:</b>	1922 bp
<b>Locus ID:</b>	74551
<b>Cytogenetics:</b>	14 28.19 cM
<b>Gene Summary:</b>	Catalyzes the conversion of oxaloacetate (OAA) to phosphoenolpyruvate (PEP), the rate-limiting step in the metabolic pathway that produces glucose from lactate and other precursors derived from the citric acid cycle.[UniProtKB/Swiss-Prot Function]