

Product datasheet for **MG209683**

Qsox2 (NM_153559) Mouse Tagged ORF Clone

Product data:

Product Type:	Expression Plasmids
Product Name:	Qsox2 (NM_153559) Mouse Tagged ORF Clone
Tag:	TurboGFP
Symbol:	Qsox2
Synonyms:	BC030934; Qscn; Qscn6l1; QSO; Soxn
Mammalian Cell Selection:	Neomycin
Vector:	pCMV6-AC-GFP (PS100010)
E. coli Selection:	Ampicillin (100 ug/mL)



[View online »](#)

ORF Nucleotide Sequence:

>MG209683 representing NM_153559
 Red=Cloning site Blue=ORF Green=Tags(s)

TTTTGTAATACGACTCACTATAGGGCGGCCGGAATTCGTCGACTGGATCCGGTACCGAGGAGATCTGCC
 GCC**CGGATCGCC**

ATGGCTGCCGCCCGGGCTGTGGCGGGATCCAGGAGCTTATGCGCGCAGCCACCGTCTCTTCGAGCCG
 CGCGGCTGCCCGGCTGCTCTTCTGCTGGCGGTGGTGGCGCAGTGGGCCCCGGGAGGGCGCGGGC
 GCGGCTCTACCGCAGGGCTCAGACGCCGTGTGGTTGCTGGACAGCGGCAGCGTGCGGTCCGGCCAGGGC
 AACAGCTCAGCCGCTGGCTGGTGCAGTCCACTCGTCGTGGTGCGGCCACTGCATCGGCTACGCACCCA
 CCTGGCGAGCGTGGCGGCGGACGTGCGAGACTGGGCTGCTGCCATCCGTGTTGCTGCTCGGACTGTGC
 AGAAGAAAAGAACCAGGATGTGTGCCGCACATATGACATCCACTTCTACCCACCTTCAGGTATTTTAA
 GCATTTACAAAGGAGTTTACAACGGGAGAAAATTTAAAGGACCTGACAGGGAGCTGCGGACAGTCAGGC
 AGACAATGATCGACTTCTGCAGAACCATACTGAGGGCACCTGGCTCCTGCATGCCACCCTGGACCC
 TATTCAGTCCAGTGACATCCTTCTTTCATGGATAGCCACAGTGGCCAATACCATGCTATTGTGTTTGA
 AGCAATGGTTCTTATGTTGGACGAGAGGTGATCTTAGATTTGATTCCATATGAAAACATCATGGTGAAGC
 GAGCACTGGATACGGACAAGCATTCTGGGGACACTTGGCATTACTTCAGTGCCTTCTGTTACTTGTAT
 TTACCAAATGGGTCTCATGGACTGGTTAATGTTGCAAAGCCTCTACGATCGTTTTTCTCTCTCATTTA
 AAATCCTTACCAGATGTAAGGAAAAAGTCACTTTTCTTGCTGAAAAGTCCAACAAAAGAAAAATCAG
 AGGTGGTGGTTTGGAAAGATTTGACAGGGCAAGCTGTATACTGCAGACCTGGAGTCGGGACTTCACTA
 CCTGCTGAGAGTGGAGCTGGCTGCTCACAGGTCCCTGGCTGGAGCCAGTTAAAGACATTCAGGGACTTC
 GTGACTGTCGTTGCCAAGCTGTTCCCTGGCCGGCTGCAGTCAAGAAGCTGTTGGAGACTGCAGGAGT
 GGTTGGCCAACCTCCCCCTGGACAAGATTCATATAATGCCATCCTAGACCTAGTCAACAACAAAATGCA
 GATTTCTGGAATCTTTCTTACCAGCCACGTAAAGTGGTGGGATGTCAAGGAAGTCGATTGGAGTTGAGG
 GGCTACCCATGCTCCCTCTGAAACTGTTTCACTTTGACGGTTCAGGCCTCCACCCATCCAGAAGCGC
 TGGCTGGCACAGGCTTTGAAGGCCACCCCAAGGCTGTGTTGCAGGCCATCAGGAGATACATTGCGACATT
 CTTTGGGTGCAAAGAATGTGGTGAACATTTTGGAGAAATGGCTAAGGAGTCCATGGATTCTGTGAAAAT
 CCAGACCAAGCTGTTCTGCTGGCTTTGGAGAAAGCACAACATGGTAAACAGCCGCTGGCAGGCCATTTGA
 GTGAGGACCCCAAGTTTCCAAGGTTCCATGGCCACTCCAGACCTTGCAGCCTGCCATGAGGAAAT
 TAAAGGCTGGACAGCTGGAATGAGGGCCAGTGCTTCTGTTCTGAAACAGCACTATAGCAGGGACAAC
 CTGGTGGACGCATACTCTGTGGACCAGGCAGTCTGGATCAGTTCTGAGAGCCAGACCTTGGCTGGGGC
 AGATGGCCAGACTCAGCCACGTGAACCTCCTGCCTCACTCCCTGTGGAGGAAGTTTCTTCTTGAACC
 TGGAGTCTGTGCTTAAAAACAACAAGCCAGATCATCGTTAGGTGTTTCAAGGATGAACACTCTG
 TGTGTCAGCTTGAGAATTGGGCCTATT

ACGCGTACGCGGCCGCTCGAG - GFP Tag - GTTTAA

Protein Sequence:

>MG209683 representing NM_153559
 Red=Cloning site Green=Tags(s)

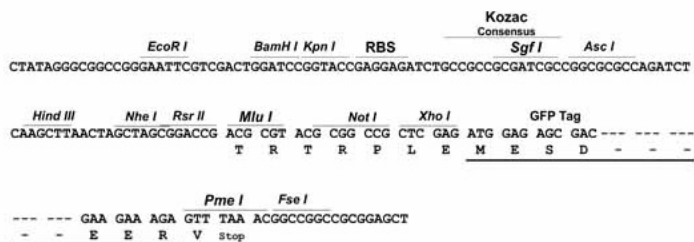
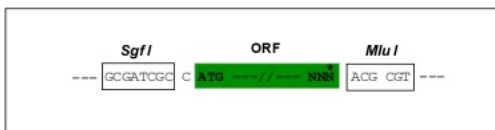
MAAARAVARDPGAYARQPPSLRAARLPRLLFLLAVVAAVGPREGGARLYREGSDAVWLLDSGSVRSATG
 NSSAAWL VQFHSSWCGHCIGYAPTWRALAADVRDWAIRVAALDCAEKNQDVCRTYDIHFYPTFRYFK
 AFTKEFTTGENFKGPDRELRTVRQTMIDFLQNHTEGTWPPACPLDPIQSSDILSFMDSHSGQYHAI VFE
 SNGSYVGREVILDLPYENIMVSRALDQKAFGLGTLGITSVPSCYLIYPNGSHGLVNVAKPLRSFFSSHL
 KSLPDVRKSLFLPEKSNKEEKSEVVVWKEFDRAKLYADLESGLHYLLRVELAAHRSLAGAQLKTRDF
 VTVVAKLFPGRPAVKLLETQLQEWLANLPLDKIPYNAILDVNNKMQISGIFLTSVHWKVCQGSRLRLR
 GYPCSLWKL FHTLTVQASTHPEALAGTFEGHPQAVLQAIRRYIRTFFGKCEGHEFEEMAKESMDSVKT
 PDQAVLWLRKHNMVNSRLAGHLSLDPKFPKVPWPDPDLCPACHEEIKGLDSWNEQVLLFLKQHYSRDN
 LVDAYSVDQGSVLRARLQMARLQMARLQMARLQMARLQMARLQMARLQMARLQMARLQMARLQMARLQMARLQ
 SVSLRIGPI

TRTRPLE - GFP Tag - V

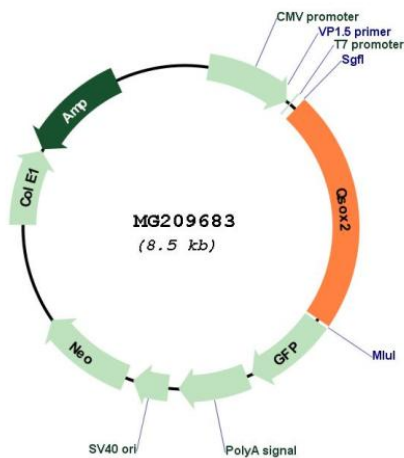
Restriction Sites: SgfI-MluI

Cloning Scheme:

Cloning sites used for ORF Shutting:



Plasmid Map:



ACCN: NM_153559

ORF Size: 1917 bp

OTI Disclaimer:	The molecular sequence of this clone aligns with the gene accession number as a point of reference only. However, individual transcript sequences of the same gene can differ through naturally occurring variations (e.g. polymorphisms), each with its own valid existence. This clone is substantially in agreement with the reference, but a complete review of all prevailing variants is recommended prior to use. More info
OTI Annotation:	This clone was engineered to express the complete ORF with an expression tag. Expression varies depending on the nature of the gene.
Components:	The ORF clone is ion-exchange column purified and shipped in a 2D barcoded Matrix tube containing 10ug of transfection-ready, dried plasmid DNA (reconstitute with 100 ul of water).
Reconstitution Method:	<ol style="list-style-type: none">1. Centrifuge at 5,000xg for 5min.2. Carefully open the tube and add 100ul of sterile water to dissolve the DNA.3. Close the tube and incubate for 10 minutes at room temperature.4. Briefly vortex the tube and then do a quick spin (less than 5000xg) to concentrate the liquid at the bottom.5. Store the suspended plasmid at -20°C. The DNA is stable for at least one year from date of shipping when stored at -20°C.
RefSeq:	NM_153559.3
RefSeq Size:	2449 bp
RefSeq ORF:	1920 bp
Locus ID:	227638
UniProt ID:	Q3TMX7
Cytogenetics:	2 A3
Gene Summary:	This gene encodes a member of the sulfhydryl oxidase protein family. Members of this family catalyze formation of disulfide bonds. A similar protein in humans may sensitize neuroblastoma cells to interferon gamma-induced cell death. Alternate splicing results in multiple transcript variants. [provided by RefSeq, Dec 2014]