

Product datasheet for **MG209681**

Rtn4 (BC032192) Mouse Tagged ORF Clone

Product data:

Product Type:	Expression Plasmids
Product Name:	Rtn4 (BC032192) Mouse Tagged ORF Clone
Tag:	TurboGFP
Symbol:	Rtn4
Synonyms:	ASY, NOGO, NSP-CL, C130026I10Rik
Mammalian Cell Selection:	Neomycin
Vector:	pCMV6-AC-GFP (PS100010)
E. coli Selection:	Ampicillin (100 ug/mL)



[View online »](#)

ORF Nucleotide Sequence:

>MG209681 representing BC032192
 Red=Cloning site Blue=ORF Green=Tags(s)

TTTTGTAATACGACTCACTATAGGGCGGCCGGGAATTCGTCGACTGGATCCGGTACCGAGGAGATCTGCC
 GCC**CGCATCGCC**

ATGCCTGAAGGTCTAACGCCAGATTTAGTTTCAGGAAGCATGTGAAAGTGAAGTGAACGAAGCCACAGGTA
 CAAAGATTGCTTATGAAACAAAAGTGGACTTGGTCCAGACATCAGAAGCTATACAAGAGTCAATTTACCC
 CACAGCACAGCTTTGCCCTCATTGAGGAAGCTGAAGCAACTCCGTACCCAGTTTTGCCTGATATTGTT
 ATGGAAGCGCCATTAAATTCTCTCCTTCCAAGCACTGGTCTTCTGTAGCGCAGCCAGTGCATCCCCAC
 TAGAAGTACCGTCTCCAGTTAGTTATGACGGTATAAAGCTTGGCCTGAAAATCCCCACCATATGAAGA
 AGCCATGAGTGTAGCACTAAAAACATCGGACGCAAAAGGAAGAAATTAAGAGCCTGAAAGTTTTAATGCA
 GCTGCTCAGGAAGCAGAAGCTCCTTATATCCATTGCATGTGATTTAATTAAGAAACAAAGCTCTCCA
 CTGAGCCAAGTCCAGAGTCTCTAATTATTCAGAAATAGCAAAATTTGAGAAGTCGGTGCCTGATCACTG
 TGAGCTCGTGGATGATTCCTCACCCGAATCTGAACCAGTTGACTTATTTAGTGATGATTCATTCCTGAA
 GTCACACAAAACATAAGGAGAGACTTAGTGCTCACCTCAGGAGGTAGGAAAGCCATATTTAGAGTCTTT
 TCAGCCCAATTTACATATTACAAAAGTGTGCTAATGAAATTCCAACATTGACAAAAAGGAGACA
 ATTTCTTTGCAAAATGGAAGAGTTAATACTGCAATTTATTCCAATGATGACTTACTTTCTTAAGGAAG
 ACAAAATGAAAGAAAGTGAACATTTCCGATTCATCTCCATTGAGATAATAGATGAGTTTCCACATT
 TGTCAGTGCTAAAGATGATTCTCCTAAGGAGTACACTGACCTAGAAGTATCCAACAAAAGTGAATTTGCT
 AATGTCCAGAGCGGGCCAATTCGTTGCTTGCCTCAGAATTGCCCTGTGACCTTTCTTCAAGAATACAT
 ATCCTAAAGATGAAGCACATGTCTCAGATGAATCTCCTCAAAAGTGGTCCAGTGTATCTAAGGTGCCCT
 ATTGCTTCCAATGTTTTCTGCTTTGGAATCTCAATAGAAATGGCAACATAGTTAAACCCAAAGTACTT
 ACGAAAGAACGAGAGGAAAACTTCTTCTGATACAGAGAAAGAGGACAGATCCCTGACACTGTATTGT
 CAGCAGAGCTGAATAAACTTCAGTTGTTGACCTCCTGTACTGGAGAGACATTAAGAAGACTGGAGTGGT
 GTTTGGTGCCAGCTTATTCCTGTGCTGTCTCTGACAGTGTTCAGCATTGTGAGTGAACGGCTACATT
 GCCTTGGCCCTGCTCTGTGACTATCAGCTTTAGGATATATAAGGGTGTGATCCAAGCTATCCAGAAAT
 CAGATGAAGGCCACCCATTACAGGCATATTTGGAATCTGAAGTGGCCATATCAGAGGAATGGTTTCAGAA
 ATATAGTAATTCTGCTCTTGGTCATGTGAACAGCACAAATAAAGAATTGAGGCGTCTCTTCTTAGTTGAT
 GATTTAGTTGATTCCTGAAGTTTGCAGTGTGATGTGGGTATTTACTTACGTTGGTGCCTGTTCATG
 GTTTGACACTACTGATTTAGCTCTGATCTCACTTTCAGTATTCTGTTATATATGAACGGCATCAGGC
 GCAGATAGATCATTATCTAGGACTTGCAACAAGAGCGTTAAGGATGCCATGGCCAAAATCCAAGCAAAA
 ATCCCTGGATTGAAGCGCAAAGCAGAA

ACGCGTACGCGGCCGCTCGAG – GFP Tag – GTTTAA

Protein Sequence:

>MG209681 representing BC032192
 Red=Cloning site Green=Tags(s)

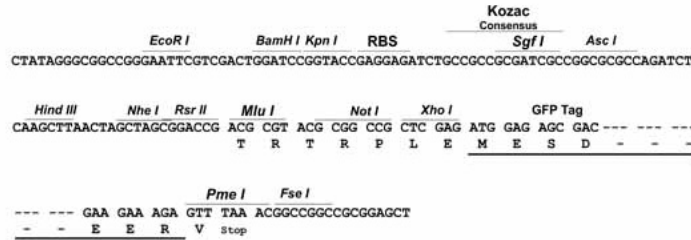
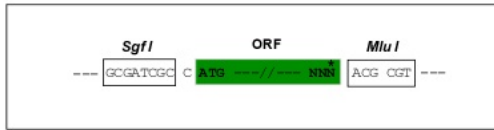
MPEGLTPDLVQEACESELNEATGKIAIYETKVDLVQTSSEAIQESIYPTAQLCPSFEEAEATPSPVLPDIV
 MEAPLNSLLPSTGASVAQPSASPLEVSPVSYDGIKLEPENPPPYEEAMSVALKTSDAKEEIKEPESFNA
 AAQEAEPYISIACDLIKETKLSPEFSNYSEIAKFEKSVDPHCELVDSSPESEPVDFSDDSIPE
 VPQTQEEAVMLMKESTEVSQVTHKHKERLSASPVQVGPYLESFQPNLHITKDAASNEIPTLTKKET
 ISLQMEEFNTAIYSNDDLSSKEDKMKSETFSDSSPIEIIDEFPTFVSAKDDSPKEYTDLEVSNKSEIA
 NVQSGANSLPCSELPDLSFKNTYPKDEAHVSEDFSKSRSSVSKVPLLLPNVSALESQIEMGNIVKPKVL
 TKEAEEKLPSDTEKEDRSLTAVLSAELNKTSVVDLLYWRDIKKTGVVFGASLFLLLSLTVFSIVSVTAYI
 ALALLSVTISFRIYKGVIAIQKSDEGHFPRAYLESEVAISEELVQKYSNSALGHVNSTIKELRRLFLVD
 DLVDSLKFAVLMWVFTYVGFALFNGLTLLILALISLFSIPVIYERHQAQIDHYLGLANKSVKDAMAKIQAK
 IPGLKRKAE

TRTRPLE – GFP Tag – V

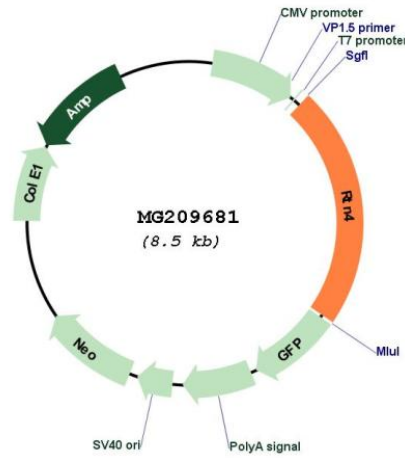
Restriction Sites: SgfI-MluI

Cloning Scheme:

Cloning sites used for ORF Shuttling:



Plasmid Map:



ACCN: BC032192

ORF Size: 1919 bp

OTI Disclaimer: Due to the inherent nature of this plasmid, standard methods to replicate additional amounts of DNA in E. coli are highly likely to result in mutations and/or rearrangements. Therefore, OriGene does not guarantee the capability to replicate this plasmid DNA. Additional amounts of DNA can be purchased from OriGene with batch-specific, full-sequence verification at a reduced cost. Please contact our customer care team at custsupport@origene.com or by calling 301.340.3188 option 3 for pricing and delivery.

The molecular sequence of this clone aligns with the gene accession number as a point of reference only. However, individual transcript sequences of the same gene can differ through naturally occurring variations (e.g. polymorphisms), each with its own valid existence. This clone is substantially in agreement with the reference, but a complete review of all prevailing variants is recommended prior to use. [More info](#)

OTI Annotation: This clone was engineered to express the complete ORF with an expression tag. Expression varies depending on the nature of the gene.

Components: The ORF clone is ion-exchange column purified and shipped in a 2D barcoded Matrix tube containing 10ug of transfection-ready, dried plasmid DNA (reconstitute with 100 ul of water).

Reconstitution Method:

1. Centrifuge at 5,000xg for 5min.
2. Carefully open the tube and add 100ul of sterile water to dissolve the DNA.
3. Close the tube and incubate for 10 minutes at room temperature.
4. Briefly vortex the tube and then do a quick spin (less than 5000xg) to concentrate the liquid at the bottom.
5. Store the suspended plasmid at -20°C. The DNA is stable for at least one year from date of shipping when stored at -20°C.

RefSeq: [BC032192](#), [AAH32192](#)

RefSeq Size: 2958 bp

RefSeq ORF: 1919 bp

Locus ID: 68585

Cytogenetics: 11 A3.3

Gene Summary: Required to induce the formation and stabilization of endoplasmic reticulum (ER) tubules. They regulate membrane morphogenesis in the ER by promoting tubular ER production. They influence nuclear envelope expansion, nuclear pore complex formation and proper localization of inner nuclear membrane proteins. However each isoform have specific functions mainly depending on their tissue expression specificities.[UniProtKB/Swiss-Prot Function]