

## Product datasheet for **MG209672**

### Uba2 (NM\_016682) Mouse Tagged ORF Clone

#### Product data:

Product Type:	Expression Plasmids
Product Name:	Uba2 (NM_016682) Mouse Tagged ORF Clone
Tag:	TurboGFP
Symbol:	Uba2
Synonyms:	AA986091; Arx; Sae2; UBA1; Ubl1a2; Uble1b
Mammalian Cell Selection:	Neomycin
Vector:	pCMV6-AC-GFP (PS100010)
E. coli Selection:	Ampicillin (100 ug/mL)



[View online »](#)

**ORF Nucleotide Sequence:**

>MG209672 representing NM\_016682  
 Red=Cloning site Blue=ORF Green=Tags(s)

TTTTGTAATACGACTCACTATAGGGCGGCCGGGAATTCGTCGACTGGATCCGGTACCGAGGAGATCTGCC  
 GCC**CGCATCGCC**

ATGGCACTGTGCGGGGGTTGCCCGGGAGCTGGCCGAGCGGTTGTCGGCGGCCGGGTGCTGGTGGTTG  
 GCGCGGGTGGGATCGGCTGTGAGCTGCTCAAGAACCTGGTCTCACTGGCTTCTCCACATCGACCTGAT  
 TGATCTGGACACTATCGATGTCAGCAACCTCAACAGGCAGTTCTTGTTCAAAAGAAACATGTGGGAAGA  
 TCAAAGGCTCAGGTTGCCAAAGAAAGTGTCTCCAGTTCCACCCCAAGCCAACATTGAGGCTCACCATG  
 ACAGCATCATGAACCCAGACTATAATGTGGAGTTTTTTCGACAGTTTATATTGGTCATGAATGCATTAGA  
 TAACAGAGCTGCACGAAACCACGTGAATAGGATGTGTCTGGCCGCTGATGTGCCTCTCATTGAGAGCGGG  
 ACTGCTGGGTATCTCGGACAGGTGACCACTATCAAGAAGGGTGTGACTGAGTGTACGAATGTCACCCTA  
 AGCCTACCCAGAGGACGTTCCCTGGCTGTACGATTCGGAACACACCTTCAGAACCTATCCATTGCATCGT  
 ATGGGCCAAGTATTTGTTCAACCAGCTGTTTGGAGAGGAAGATGTGATCAAGAAGTGTCTCCTGACAGA  
 GCTGACCCTGAGGCTGCTTGGGAACCAACAGAGGCTGAAGCTAGAGCTCGAGCATCTAATGAAGACGGAG  
 ACATTAAGCGTATTTCCACTAAGGAATGGGCTAAGTCAACTGGATATGATCCAGTAAACTTTTTACCAA  
 GCTTTTTAAAGATGATATTAGATATCTGCTGACAACTCTGGCGCAAGAGGAAACCTCCAGTT  
 CCACTGGACTGGGCTGAAGTGCAGAGTCAAGGAGAAGCCAATGCCGATCAACAAAATGAGCCCCAGTTGG  
 GTTTGAAAGACCAGCAGGTTCTGGATGTAAAGAGCTATGCGAGTCTGTTTTCAAAGAGCATCGAGACTCT  
 GCGAGTCCATTTAGCGGAGAAGGGGATGGAGCTGAGCTCATCTGGGATAAAGACGACCCACCTGCAATG  
 GATTTTGTACATCTGCTGCAACCTCAGGATGCACATTTTTCAGCATGAATATGAAGACGAGTTTGATA  
 TAAAATCAATGGCAGGGAATATCATTCTGCTATAGCTACTACTAATGCAGTGTGATCGCCGGCTTGATAGT  
 GTTGAAGGATTAAGATTTTATCTGGAATAAGTACGAGTGTAGAACTATTTTTTTGAATAAGCAGCCA  
 AACCCAAGAAAGAGCTCTTGGTGCCCTGTGCACTGGATCCTCCAACACCAACTGTTACGTTTTGTGCCA  
 GCAAGCCAGAGGTGACTGTGCGGCTGAATGTCCACAAAGTACTGTCTCACCTTACAGGATAAGATAGT  
 GAAAGAAAAGTTTGTATGGTGGCACCAGATGTCCAAATGAAGATGGGAAAGGCACAATCCTGATATCT  
 TCAGAAGAGGGAGAGACAGAAGCCAATAACCCCAAGAAGTTGTCTGATTTTGAATTAGAAAACGGCAGCC  
 GGCTTCAAGCAGACGACTTCTCCAGGACTATACTTTGCTGATCAACATCTTTCATAGTGAAGATCTTGG  
 AAAGGATGTTGAATTTGAAGTAGTTGGTACAGCCCTGAAAAAGTGGGGCCAAAACAAGCTGAAGATGCT  
 GCCAAAAGCATTGCCAACGGCAGCGATGACGGTCCCAGCCTTCCACCTCCACAGCACAAAGAGCAAGATG  
 ATGTGCTCATAGTTGATTCAGACGAAGAAGGCCCTTCAAATAGCACCAGCTGCAGCGGGGACGACAAGGC  
 CCGCAAGCGGAAGCTGGAAGAGAATGAGGCTGCCAGTACCAAGAAGTGGCGCTTGAGCAGATGGAAGAT  
 CCAGATGACGTCATAGCGTTAGAC

**ACGCGT**ACGCGGCCGCTCGAG – GFP Tag – GTTTAA

**Protein Sequence:**

>MG209672 representing NM\_016682  
 Red=Cloning site Green=Tags(s)

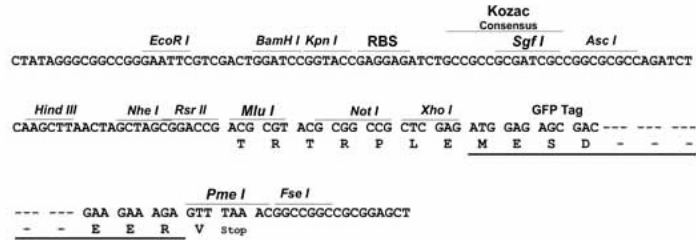
MALSRGLPRELAEAVSGGRVLLVGGAGGIGCELLKNLVLTGFSHIDLIDLDITDVSNLNRQFLFQKKHVGR  
 SKAQVAKESVLQFHPQANIEAHHDSIMNPDYNVEFFRQFILVMNALDNRAARNHVNRMCLAADVPLIESG  
 TAGYLGQVTTIKKGVTECYECHKPQTQRTFPGCTIRNTPSEPIHCIVWAKYLFNQLFGEEDADQEVSPDR  
 ADPEAAWEPTAEARARASNEDGDIKRISTKEWAKSTGYDPVKLFTKLFKDDIRYLLTMDKLWRKRKPPV  
 PLDWAQVQSQGEANADQQNEPQLGLKDQQLDVKSYASLFSKSIETLRVHLAEKGDGAELIWDKDDPPAM  
 DFVTSANLRLMHIFSMNMKSRFDIKSMAGNIIPAIATTNAVIAGLIVLEGLKILSGKIDQCRTIFLNKQP  
 NPRKLLVPCALDPPNTNCYVCASKPEVTVRLNVHKVTVLTLQDKIVKEKFAMVAPDVQIEDGKGTILIS  
 SEEGETEANNPKKLSDFGIRNGSRLQADDFLQDYTLINILHSEDLGKDVFEVVGDSPEKVGPKQAEDA  
 AKSIANGSDDGAQPSTSTAQEQDDVLIVDSDEEGPSNSTDCSGDDKARKRKLLENEAASTKKCRLEQMED  
 PDDVIALD

**TRTRPLE** – GFP Tag – V

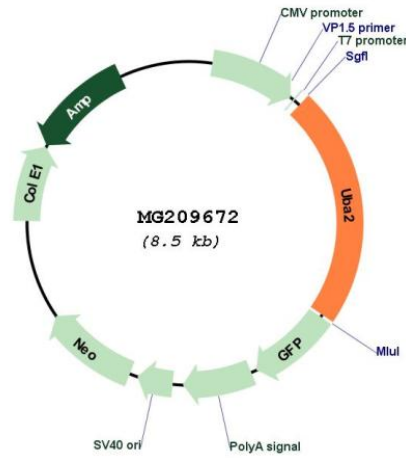
Restriction Sites: SgfI-MluI

Cloning Scheme:

Cloning sites used for ORF Shutting:



Plasmid Map:



ACCN: NM\_016682

ORF Size: 1914 bp

<b>OTI Disclaimer:</b>	The molecular sequence of this clone aligns with the gene accession number as a point of reference only. However, individual transcript sequences of the same gene can differ through naturally occurring variations (e.g. polymorphisms), each with its own valid existence. This clone is substantially in agreement with the reference, but a complete review of all prevailing variants is recommended prior to use. <a href="#">More info</a>
<b>OTI Annotation:</b>	This clone was engineered to express the complete ORF with an expression tag. Expression varies depending on the nature of the gene.
<b>Components:</b>	The ORF clone is ion-exchange column purified and shipped in a 2D barcoded Matrix tube containing 10ug of transfection-ready, dried plasmid DNA (reconstitute with 100 ul of water).
<b>Reconstitution Method:</b>	<ol style="list-style-type: none"><li>1. Centrifuge at 5,000xg for 5min.</li><li>2. Carefully open the tube and add 100ul of sterile water to dissolve the DNA.</li><li>3. Close the tube and incubate for 10 minutes at room temperature.</li><li>4. Briefly vortex the tube and then do a quick spin (less than 5000xg) to concentrate the liquid at the bottom.</li><li>5. Store the suspended plasmid at -20°C. The DNA is stable for at least one year from date of shipping when stored at -20°C.</li></ol>
<b>RefSeq:</b>	<a href="#">NM_016682.2</a> , <a href="#">NP_057891.1</a>
<b>RefSeq Size:</b>	2524 bp
<b>RefSeq ORF:</b>	1917 bp
<b>Locus ID:</b>	50995
<b>UniProt ID:</b>	<a href="#">Q9Z1F9</a>
<b>Cytogenetics:</b>	7 B1
<b>Gene Summary:</b>	The heterodimer acts as an E1 ligase for SUMO1, SUMO2, SUMO3, and probably SUMO4. It mediates ATP-dependent activation of SUMO proteins followed by formation of a thioester bond between a SUMO protein and a conserved active site cysteine residue on UBA2/SAE2 (By similarity).[UniProtKB/Swiss-Prot Function]