

Product datasheet for **MG209649**

Myb (NM_010848) Mouse Tagged ORF Clone

Product data:

Product Type:	Expression Plasmids
Product Name:	Myb (NM_010848) Mouse Tagged ORF Clone
Tag:	TurboGFP
Symbol:	Myb
Synonyms:	A1550390; c-myb; M16449
Mammalian Cell Selection:	Neomycin
Vector:	pCMV6-AC-GFP (PS100010)
E. coli Selection:	Ampicillin (100 ug/mL)



[View online »](#)

ORF Nucleotide Sequence:

>MG209649 representing NM_010848
 Red=Cloning site Blue=ORF Green=Tags(s)

TTTTGTAATACGACTCACTATAGGGCGGCCGGAATTCGTCGACTGGATCCGGTACCGAGGAGATCTGCC
 GCC**GCGATCGCC**

ATGGCCCGGAGACCCCGACACAGCATCTACAGTAGCGATGAAGATGATGAAGACATTGAGATGTGTGACC
 ATGACTACGATGGGCTGCTGCCCAAATCTGAAAAGCGTCACTTGGGAAAAGTAGGTGGACAAGGAAGA
 GGATGAGAAGCTGAAGAAGCTGGTGAACAGAACGGAACAGACGACTGAAAAGTCAATTGCCAATTATCTG
 CCCAACCGGACAGATGTGCACTGCCAACCCGGTGGCAGAAAAGTCTGAACCCTGAACTCATCAAAGGTC
 CCTGGACCAAAGAAGAAGATCAGAGAGTCATAGAGCTTGTCCAGAAAATATGGTCCGAAGCGTTGGTCTGT
 TATTGCCAAGCACTTAAAAGGGAGAATTGGAAAGCAGTGTGGGAGAGGTGGCACAACCATTTGAATCCA
 GAAGTTAAGAAAACCTCCTGGACAGAAGAGGAGGACAGAATCATTTACCAGGCACACAAGCGTCTGGGGA
 ACAGATGGGCAGAGATCGCAAAGCTGCTGCCCGGACGGACTGATAATGCTATCAAGAACCCTGGAATTC
 CACCATGCGTCGAAGGTGGAACAGGAAGGCTACCTGCAGGAGCCTTCCAAGCCAGCCAGACGCCAGTG
 GCCACGAGCTTCCAGAAGAAACAATCATTTGATGGGGTTTGGGCATGCCTCACCTCCATCTCAGCTCTCTC
 CAAGTGGCCAGTCTCCGTCAACAGCGAATATCCCTATTACCACATCGCCGAAGCACAAAACATCTCCAG
 TCACGTTCCCTATCCTGTGCGATTGCATGTTAATATAGTCAACGTCCCTCAGCCGGCTGCGGCAGCCATC
 CAGAGACACTATAACGACGAAGACCCTGAGAAGGAAAAGCGAATAAAGGAGCTGGAGTTGCTCCTGATGT
 CAACAGAGAACGAGCTGAAGGGACAGCAGGCATTACCAACACAGAACCACACTTGCAGCTACCCCGGGTG
 GCACAGCACCTCCATTGTGGACCAGACCAGCCTCATGGGGATAGTGCACCTGTTTCTGTTTGGGAGAA
 CACCATGCCACCCATCTCTGCCTGCAGATCCCAGGCTCCCTACCTGAAGAAAAGTGCCTCACCAGCAAGGT
 GCATGATCGTCCACCAGGCACCATTCTGGACAATGTTAAGAACCTCTTGAATTTGCAGAAAACACTCCA
 GTTTATAGATTCTTTCTTGAACACTTCCAGCAACCATGAAAGCTCGGGCTTAGATGCACCTACCTTACCC
 TCCACTCTCTCATTGGTCACAACTGACACCATGTCGAGACCAGACTGTGAAAACCCAGAAAGGAAAATT
 CCATCTTTAGAACTCCAGCTATCAAAGGTCAATCCTCGAAAAGCTCTCCTCGAACTCCCACACCATTCAA
 ACATGCCCTTGCAGCTCAAGAAATTAATACGGTCCCCTGAAGATGCTACCTCAGACCCCTCCCATGCA
 GTGGAGGACCTACAAGATGTGATTAAGCGGGAATCGGATGAATCTGGAATTGTTGCTGAGTTTCAAGAGA
 GTGGACCACCGTTACTGAAAAAATCAAGCAGGAGGTGGAGTCCCAACTGAGAAATCGGAAAACCTCTT
 CTGCTCAAACCCTGGCAGAGAACAGCCTGAGCACCCAGCTGTTCTCGCAGGCGTCTCCTGTGGCAGAT
 GCCCAAATATTCTTACAAGCTCTGTTTTAATGACACCTGTATCAGAAGATGAAGACAATGCTCCTCAAAG
 CCTTTACCGTACCTAAGAACAGGCCCTGGTGGTCCCTTGCAGCCATGCAGTGGTGCCTGGGAGCCAGC
 ATCCTGTGGGAAGACAGAGGACCAGATGACGGCCTCCGGTCCGGCTCGGAAATACGTGAACGCGTCTCA
 GCTCGAACTCTGGTCATG

AC**GCGGCCGCTCGAG** - GFP Tag - GTTTAA

Protein Sequence:

>MG209649 representing NM_010848
 Red=Cloning site Green=Tags(s)

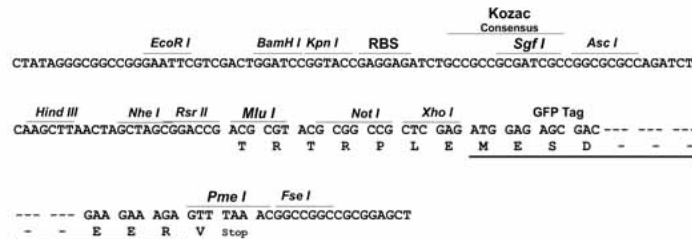
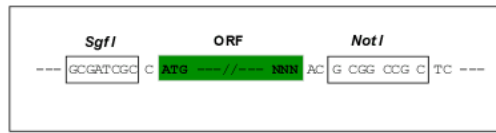
MARRRHSIYSSDEDDEDIEMCDHDYDGLLPKSGKRHLGKTRWTRREEDEKLKLVQNGTDDWKVIANYL
 PNRTDVQCQHRWQKVLNPELIKGPWTKEEDQRVIELVQKYGPKRWSVIAKHLKGRIGKQCRERWHNHLNP
 EVKKTSTWEEEDRIIYQAHKRLGNRWAEIAKLLPGRDINAIKNHWNSTMRRKVEQEGYLQEPSKASQTPV
 ATSFQKNNHLMGFHASPPSQLSPSGQSSVNSEYPYYHIAEAQNISSHVPYPVALHVNIIVNPQAAAAI
 QRHYNDEDPEKEKRIKELELLLMSTENELKGQALPTQNHTCSYPGWHTSIVDQTRPHGDSAPVSCLGE
 HHATPSLPADPGSLPEESASPARCMIVHQGTILDNVKNLLEFAETLQFIDSFLNTSSNHESGLDAPTL
 STPLIGHKLTPCRQTVKTQKENSIFRTPAIKRSILESSPRTPPFKHALAAQEIYKGPLKMLPQTPSHA
 VEDLQDVIKRESDESGIVAEFQESGPPLKKIKQEVESPTKSGNFFCSNHWAEENSLSTQLFSQASPVAD
 APNILTSSVLMTPVSEDEDNVLKAFVTPKNRPLVGPLQPCSGAWEPASCGKTEDQMTASGPARKYVNAFS
 ARTLVM

TRPLE - GFP Tag - V

Restriction Sites: SgfI-NotI

Cloning Scheme:

Cloning sites used for ORF Shuttling:



ACCN: NM_010848

ORF Size: 1908 bp

OTI Disclaimer: The molecular sequence of this clone aligns with the gene accession number as a point of reference only. However, individual transcript sequences of the same gene can differ through naturally occurring variations (e.g. polymorphisms), each with its own valid existence. This clone is substantially in agreement with the reference, but a complete review of all prevailing variants is recommended prior to use. [More info](#)

OTI Annotation: This clone was engineered to express the complete ORF with an expression tag. Expression varies depending on the nature of the gene.

Components: The ORF clone is ion-exchange column purified and shipped in a 2D barcoded Matrix tube containing 10ug of transfection-ready, dried plasmid DNA (reconstitute with 100 ul of water).

Reconstitution Method:

1. Centrifuge at 5,000xg for 5min.
2. Carefully open the tube and add 100ul of sterile water to dissolve the DNA.
3. Close the tube and incubate for 10 minutes at room temperature.
4. Briefly vortex the tube and then do a quick spin (less than 5000xg) to concentrate the liquid at the bottom.
5. Store the suspended plasmid at -20°C. The DNA is stable for at least one year from date of shipping when stored at -20°C.

RefSeq: [NM_010848.3](#), [NP_034978.3](#)

RefSeq Size: 3420 bp

RefSeq ORF: 1911 bp

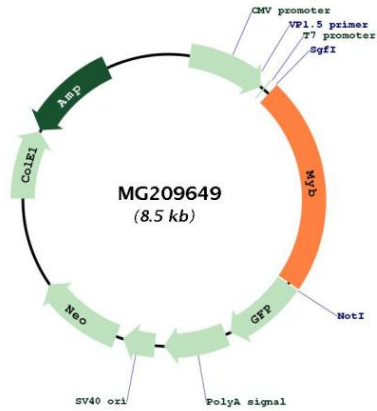
Locus ID: 17863

UniProt ID: [P06876](#)

Cytogenetics: 10 9.75 cM

Gene Summary: Transcriptional activator; DNA-binding protein that specifically recognize the sequence 5'-YAAC[GT]G-3'. Plays an important role in the control of proliferation and differentiation of hematopoietic progenitor cells.[UniProtKB/Swiss-Prot Function]

Product images:



Circular map for MG209649