

Product datasheet for **MG209648**

Lrfn4 (NM_153388) Mouse Tagged ORF Clone

Product data:

Product Type:	Expression Plasmids
Product Name:	Lrfn4 (NM_153388) Mouse Tagged ORF Clone
Tag:	TurboGFP
Symbol:	Lrfn4
Synonyms:	BC023156; Salm3
Mammalian Cell Selection:	Neomycin
Vector:	pCMV6-AC-GFP (PS100010)
E. coli Selection:	Ampicillin (100 ug/mL)



[View online »](#)

ORF Nucleotide Sequence:

>MG209648 representing NM_153388
 Red=Cloning site Blue=ORF Green=Tags(s)

TTTTGTAATACGACTCACTATAGGGCGGCCGGGAATTCGTCGACTGGATCCGGTACCGAGGAGATCTGCC
 GCC**CGCATCGCC**

ATGGCCCCGCGCTCCTATTGCTGCTGCTGGCCAGTGGAGCCGCTGCTTGCCCGCTACCCTGTGTGTGCC
 AGAACCTGTCGGAGTCACTCAGCACCCCTTTGTGCCACCGAGGCCTGCTGTTGTGCCACCAACCTGGA
 CAGGCGCACAGTTGAACTGCGCCTGGCCGACAACCTTCATCCAGGCCCTGGGACCCTGACTTCCGCAAC
 ATGACAGGGCTGGTGGACCTAACATTGTCTCGAAATGCCATCACCCGATTGGGGCTCGCTCCTTTGGGG
 ACCTGGAGAGCCTGCGCTCCTTGCACCTGGATGGCAACAGGCTGGTGGAGCTGGGAGCAGCAGCCTACG
 GGGCCTGTCAACCTCCAGCATCTATTCTCAGTGGCAATCAACTGGGCCGATCGCCCCGGGGCCTTC
 GACGACTCCTTGACAGTCTCGAGGACCTGGATGTGTCTATAACAACCTCCGGCAGGTTCCCTGGGCTG
 GCATAGGCTCCATGCCTGCCCTGCATACCCTGAACCTGGACCATAACCTCATCGATGCACTACCCCCAGG
 TGTCTTTGCTCAGCTCAGCCAGCTCTCCGCCTTGACCTCACCTCCAACCGCCTGGCCACCCTGGCACCT
 GATCCACTCTTCTCCCGAGGCCGGGATGCTGAGGCCTCACCTTCTCCCTGGTGTGAGTTTCAGCGGGA
 ACCCACTGCACTGCAACTGTGAGCTGCTGTGGCTGCGGGCGCTGGCCCGCCGATGACCTGGAAACCTG
 CGCTTCTCCACCAACCTGGCAGGCCGCTACTTCTGGGAGTGCCTGAGGGAGAGTTCTCCTGTGAGCCT
 CCGCTGATTGCCCGGCACACACAGCGCCTGTGGGTGCTAGAGGGCCAGCGGGCCACCCTACGGTGCAGGG
 CCCTTGGTGAACCTGTACCTACCATGCACTGGGTTGGCCCTGATGACAGGCTGGTTGGCAACTCTTCTCG
 AGCCTGGGCTTTCCCAATGGGACCCTAGAGATTGGGGTGACGGGCGCTGGAGATGCAGGAGCCTATACC
 TGCATTGCCACCAACCTGCTGGTGAGGCCACAGCCGAGTGGAGCTCCGGTACTGGCCTTGGCCCATG
 GTGGGAACACCAAGTGTGAGGGGGCCGCTCTGGGCCTTCGGACATTGCTGCTTCTGCTAGAACTGCTG
 CGAAGGCCGAGGGAACCTTGAATCTGAACCAGCAGTGAAGTGACGGAGGTGACTGCCACCTCTGGCCTG
 GTGAGCTGGGGCCTGGGGCGCCAGCTGACCCAGTGTGGATGTTCCAAATCCAGTACAACAGCAGCGAGG
 ATGAGACCCTCATCTACCGGATTGTACCAGCCTCCAGCCACCCTTCTGCTGAAGCACCTGGTTCCCGG
 TGCTGACTACGACCTCTGCCTGTGGCCCTGTACCTGCTGCTGGGCCCTCCGACCTCACGGCCACTAGA
 CTGCTGGGCTGTGCCACTTCTCTACGCTACCAGCCACCCCTGTGCCATGCCCTACAGGCCCATGTGC
 TGGGGGGACCCTGACTGTGGCAGTGGGGGGCTCCTAGTGGCTGCCTACTGGTCTTCACTGTGGCCTT
 GCTGGTTCGGGGCCGGGAGCTGGGAATGGCCGCTCCCACTCAAACCTCAGCCATGTCCAATCCCAGACC
 AATGGTGGCACCAGCCCATGCCAAGAGCCACCACCACGGAGCCCTCCACCCGCTCCTCAGCGCAGCT
 GCTCCCTGGACCTAGGAGACACCGGAGGATGCTACGGGTATGCCAGGCGCCTGGGAGGAGCTGGGCCCCG
 GCGGAGCCACTCTGTACATGGGGGGCTGCTGGGAGCTGGGTGTGGGGGGTGGGGGGCAGTGGGAGCGG
 CTGGAGGAGAGTGTGGT

ACGCGTACGCGGCCGCTCGAG – GFP Tag – GTTTAA

Protein Sequence:

>MG209648 representing NM_153388
 Red=Cloning site Green=Tags(s)

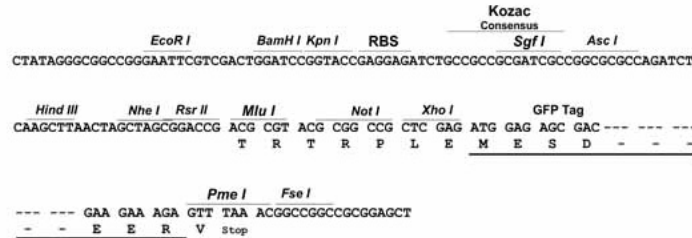
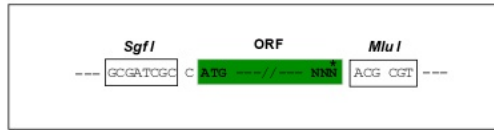
MAPLLLLLLASGAAACPLPCVCQNLSESLSTLCAHRGLLFVPPNVDRRTVELRLADNFIQALGPPDFRN
 MTGLVDLTLSRNAITRIGARSFGDLESLRSLHLDGNRLVELGSSSLRGPVNLQHLILSGNQLGRIAPGAF
 DDFLDSLEDLDVSYNNLRQVPWAGIGSMPALHTLNLDHNLIDALPPGVFAQLSQLSRLDLTSNRLATLAP
 DPLFSRGRDAEASPSPLVLSFSGNPLHCNCELLWLRRLARPDDLETASPPTLAGRYFWAVPEGEFSCEP
 PLIARHTQRLWVLEQRATLRCRALGDPVPTMHVWGPDDRLVGNSRAWAFPNGTLEIGVTGAGDAGAYT
 CIATNPAGEATARVELRVLALPHGGNTSAEGGRGPSDIAASARTAAEGETLESEPAVQVTEVTATSGL
 VSWGLGRPADPVWFMFIQYNSSEDETLIYRIVPASSHFLKHLVPGADYDLCLLALSPAAGPSDLTATR
 LLGCAHFSTLPATPLCHALQAHVGGTLTVAVGGVLAALLVFTVALLVRGRGAGNGRLPLKLSHVQSQT
 NGGTSPMPKSHPPRPPRQRSCSLDLGDTGGCYGYARRLGGAWARRSHSVHGLLGGAGCRVGGSAER
 LEESV

TRTRPLE – GFP Tag – V

Restriction Sites: SgfI-MluI

Cloning Scheme:

Cloning sites used for ORF Shutting:



ACCN: NM_153388

ORF Size: 1908 bp

OTI Disclaimer: Due to the inherent nature of this plasmid, standard methods to replicate additional amounts of DNA in E. coli are highly likely to result in mutations and/or rearrangements. Therefore, OriGene does not guarantee the capability to replicate this plasmid DNA. Additional amounts of DNA can be purchased from OriGene with batch-specific, full-sequence verification at a reduced cost. Please contact our customer care team at custsupport@origene.com or by calling 301.340.3188 option 3 for pricing and delivery.

The molecular sequence of this clone aligns with the gene accession number as a point of reference only. However, individual transcript sequences of the same gene can differ through naturally occurring variations (e.g. polymorphisms), each with its own valid existence. This clone is substantially in agreement with the reference, but a complete review of all prevailing variants is recommended prior to use. [More info](#)

OTI Annotation: This clone was engineered to express the complete ORF with an expression tag. Expression varies depending on the nature of the gene.

Components: The ORF clone is ion-exchange column purified and shipped in a 2D barcoded Matrix tube containing 10ug of transfection-ready, dried plasmid DNA (reconstitute with 100 ul of water).

Reconstitution Method:

1. Centrifuge at 5,000xg for 5min.
2. Carefully open the tube and add 100ul of sterile water to dissolve the DNA.
3. Close the tube and incubate for 10 minutes at room temperature.
4. Briefly vortex the tube and then do a quick spin (less than 5000xg) to concentrate the liquid at the bottom.
5. Store the suspended plasmid at -20°C. The DNA is stable for at least one year from date of shipping when stored at -20°C.

RefSeq: [NM_153388.4](#)

RefSeq Size: 3194 bp

RefSeq ORF: 1911 bp

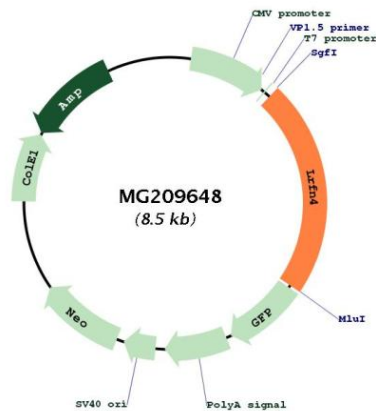
Locus ID: 225875

UniProt ID: [Q80XU8](#)

Cytogenetics: 19 A

Gene Summary: Promotes neurite outgrowth in hippocampal neurons. May play a role in redistributing DLG4 to the cell periphery.[UniProtKB/Swiss-Prot Function]

Product images:



Circular map for MG209648