

## Product datasheet for **MG209629**

### 2510039O18Rik (NM\_029841) Mouse Tagged ORF Clone

#### Product data:

Product Type:	Expression Plasmids
Product Name:	2510039O18Rik (NM_029841) Mouse Tagged ORF Clone
Tag:	TurboGFP
Symbol:	2510039O18Rik
Synonyms:	Kiaa2013
Mammalian Cell Selection:	Neomycin
Vector:	pCMV6-AC-GFP (PS100010)
E. coli Selection:	Ampicillin (100 ug/mL)



[View online »](#)

**ORF Nucleotide Sequence:**

>MG209629 representing NM\_029841  
 Red=Cloning site Blue=ORF Green=Tags(s)

TTTTGTAATACGACTCACTATAGGGCGGCCGGAATTCGTCGACTGGATCCGGTACCGAGGAGATCTGCC  
 GCC**GCGATCGCC**

ATGTGGCTGCAGCAGCGCCTGAAGGGGCTGCCGGGCTGTGTGAGCAGCTGGGCCCGCCCTCTCT  
 GCCTGCTCGGCCCTTTGGTGTCTCTGTGGTTCGCGAGCTCCGGGGCGCGGGCGGGCGGCCCT  
 GCACCTGCCGTCTGGGCCCGCAGCGAGCCGGGCGCCGCGAGCCGTCTGCCTGTCTGGAGGCGCCACC  
 CGCGCGTGGCGGGCTGCGTGTGCGGGCAGGCGGTGCCGCTTGGCCCGGGGTGCCAGCCCTGGTGG  
 CCAACGGCTTCTGGCTCTGGACGCTCCAACAACCGGCTGTGGGTGACGCCCGGAGAGCGGGAGCTGC  
 CGTGACGCCGACTTCGTGCCCTTCGTGCAGCTACGCCGCTGAATGTGGTGGCCGAGGCTGGAGAGGG  
 GTGCTGCTTCTCGGGAGGGCTGCTGCGCCGAGTGCCTGCCTGCAGCTGGGGACCCCGGGCTCGGGCC  
 CTGCCGCTGGTGTCCCCGGGCCCGCTCGGCTCCGGGCTCTCCGCGGGTGGGGCCGGGACTGCGTGT  
 ACTGCAGGAGACTTCTGGCGCACCGAGGCCGACCCACGTCTATCTGCAGCGCATCCAGCTCAACAAT  
 CCCACGGAGCGCTGGCCGCGTTGACAGACTGTGGGGCCACCGCAGGCCAGTCCCCAAATCCTTACCA  
 GCACCTGGAGAAGTCCGAGATCACCAGTTTCTCCTTACTCGGGCCGGTCCACACCCCTTCCATCGGG  
 GCTGGTCACTTGGTCTGGTGACCTCTAAGAAGTTAGTGAACAGGCTCCAGGTGGCTCCCAAGACACAG  
 CTGGACGAGACGGTGTGTGGTGGTGACATCTCTGGTCCCATCCACCCCGAGGTGCTCAAAGCAAAG  
 GAGCAAGGAGCTCAAGGCGCTGCAGGACTTAGCACGGAAGGAGATGCTGGAGCTGTTGGAGATGCCCGC  
 CTCGGAGCTGCTCAGGATCACCAGTACCTCTGGGCCAGCTCTCAGTCCCGGTGTGGAGATGAAGAGG  
 ATCACGGATGCTCACAGCCATCTGGCCTGACCGTGAACCTGACCCTGTACTACATGCTCTCCTGCTCTC  
 CAGCCCCACTGCTCAGCCCCCTCTGAGCCACAGGGAACCGGAGCAGATGGAGGCAACGCTCAACTATGA  
 AGACCAGTCTTCAAGTGGCCATGCCACCATGCATGCCGAGAACCCTGTGGCCTGGCCAGCTCTCCTCAGT  
 CAGCAGATCCTGCAGCTGGCTGACCTGTGGAAGTTGACCTCCAGAAGCGCGGCTGCAAGGGGCTGGTGA  
 AGGTTGGCGCTCCGGGCATCCTGCAAGGCATGGTGTGAGCTTCCGGCGGCTACAGTTACAGAAAAACA  
 CCTGCAGTTCAGGCCGACCCCGAGGTGCTCCACAACAGCTATGCGCTTACAGGCATCCGCTACAAGAAC  
 GACCACATCAACCTGGCTGTGCTGGTGGACGCTGAGGGCAAGCCCTACCTGCATGTGTCTTTGGAGTCCC  
 GAGGCCAACCCGTCAGATCTACGCTGTGAGGCAGGCTGCCTCCATGACCCCGTAGAGCTGACCTCAGA  
 GCCTGGAGGCCACACCTTCTGTGTATGGTGAACAGCCATCACACCACTGTTGTACATCTCCACCGAC  
 CTCACACATCTGCAGGACCTGCGGCACAGCTGCACCTTAAGGCCATCCTGGCCACGATGAGCACATGG  
 CCAGCAGGATCCCGCCCTGCCCTTCTCTTCTGGTTCAGTGTGGCCTCCCTCATACCCTTCCACCT  
 TTCTCTTTAAACTCATCTATAATGAGTACTGTGGCCTGGAGCCAAGCCCTTCTCAGGAGCAAGGAA  
 GATCCAGTGTC

**ACGCGT**ACGCGGCCGCTCGAG – GFP Tag – GTTTAA

**Protein Sequence:**

>MG209629 representing NM\_029841  
 Red=Cloning site Green=Tags(s)

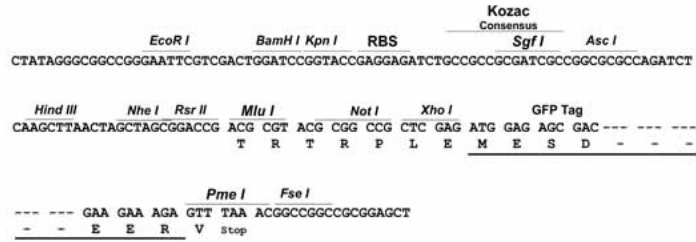
MWLQQRKGLPGLLSSSWARRLLCLLGLLVLLWFASSGARRAAGGLHLPWAREPAAEPSACLEAAT  
 RAWRGLRDRGEAVPLGPGVPALVANGFLALDASNRLWVTPGEREPAVTPDFVPFVQLRPLNVVAEAGEA  
 VLLLREGLLRVRCLQLGTPGSGPAAGVPGPASASGLSAGSGRDCVLLQEDFLAHRGRPHVYLQRIQLNN  
 PTERVAALQTVGPTAGPVPKSFSTLEKVDHQFLLYSGRSTPLPSGLVHLVVVTSKKLVNRLQVAPKTQ  
 LDETVLVVVHISGPIHPQVLKSKGAKELKALQDLARKEMLELLEMPASELLQDHQYLWAQLFSPGVEMKR  
 ITDAHTPSGLTVNLTLYYMLSCSPAPLLSPSLSHREREQMEATLNYEDHCFSGHATMHAENLWPGQLSSV  
 QQILQLADLWKLTLQKRGCKGLVKVGAPGILQGMVLSFGGLQFTENHLQFQADPEVLHNSYALHGIRYKN  
 DHINLAVLVDAEGKPYLHVSLESRGQPVKIYACEAGCLHDPVELTSEPGGHTFSVMVTQPITPLLYISTD  
 LTHLQDLRHTLHLKAILAHDEHMAQQDPGLPFLFWFSVASLITLFLFLFKLIYNEYCGPGAKPLFRSKE  
 DPSV

**TRTRPLE** – GFP Tag – V

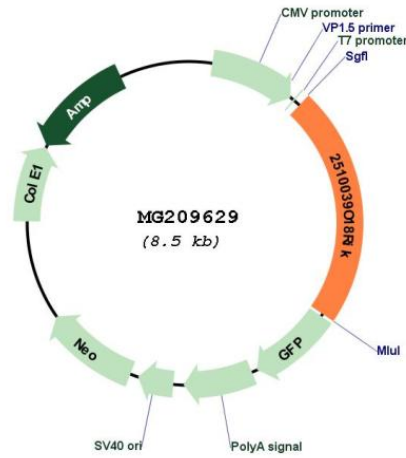
Restriction Sites: SgfI-MluI

Cloning Scheme:

Cloning sites used for ORF Shutting:



Plasmid Map:



ACCN: NM\_029841

ORF Size: 1902 bp

<b>OTI Disclaimer:</b>	The molecular sequence of this clone aligns with the gene accession number as a point of reference only. However, individual transcript sequences of the same gene can differ through naturally occurring variations (e.g. polymorphisms), each with its own valid existence. This clone is substantially in agreement with the reference, but a complete review of all prevailing variants is recommended prior to use. <a href="#">More info</a>
<b>OTI Annotation:</b>	This clone was engineered to express the complete ORF with an expression tag. Expression varies depending on the nature of the gene.
<b>Components:</b>	The ORF clone is ion-exchange column purified and shipped in a 2D barcoded Matrix tube containing 10ug of transfection-ready, dried plasmid DNA (reconstitute with 100 ul of water).
<b>Reconstitution Method:</b>	<ol style="list-style-type: none"><li>1. Centrifuge at 5,000xg for 5min.</li><li>2. Carefully open the tube and add 100ul of sterile water to dissolve the DNA.</li><li>3. Close the tube and incubate for 10 minutes at room temperature.</li><li>4. Briefly vortex the tube and then do a quick spin (less than 5000xg) to concentrate the liquid at the bottom.</li><li>5. Store the suspended plasmid at -20°C. The DNA is stable for at least one year from date of shipping when stored at -20°C.</li></ol>
<b>RefSeq:</b>	<a href="#">NM_029841.3</a> , <a href="#">NP_084117.2</a>
<b>RefSeq Size:</b>	2731 bp
<b>RefSeq ORF:</b>	1905 bp
<b>Locus ID:</b>	77034
<b>UniProt ID:</b>	<a href="#">Q91X21</a>
<b>Cytogenetics:</b>	4 E2