

Product datasheet for **MG209609**

Pde1c (BC032277) Mouse Tagged ORF Clone

Product data:

Product Type:	Expression Plasmids
Product Name:	Pde1c (BC032277) Mouse Tagged ORF Clone
Tag:	TurboGFP
Symbol:	Pde1c
Mammalian Cell Selection:	Neomycin
Vector:	pCMV6-AC-GFP (PS100010)
E. coli Selection:	Ampicillin (100 ug/mL)



[View online »](#)

ORF Nucleotide Sequence:

>MG209609 representing BC032277
 Red=Cloning site Blue=ORF Green=Tags(s)

TTTTGTAATACGACTCACTATAGGGCGGCCGGAATTCGTCGACTGGATCCGGTACCGAGGAGATCTGCC
 GCC**CGCATCGCC**

ATGGAGTCTCAACCAAGGAAATTGAAGAATTCGAGAGCAACTCTCTGAAACACCTGCAACCTGAGCAGA
 TCGAGAAAATCTGGCTTCGGCTCCGCGGCTGAGGAAATATAAGAAAACGTCCCAGAGGTTACGGTCTTT
 GGTCAAGCAATTAGAACGAGGAGAGGCCTCTGTGGTAGACCTTAAGAAAGATCTGGAATATGCAGCCACA
 GTGCTTGAATCTGTATATATTGATGAAACAAGCGACTGCTGGATACAGAGGATGAGCTTAGTGACATTC
 AATCAGATGCTGTGCCTCAGAAGTTCGGGATTGGCTGGCCTCCACCTTCACACGCAGATGGGGATGAT
 GCTTAGGAGAAGTGATGAGAAGCCAGGTTCAAGAGCATCGTCCATGCGGTGCAAGCTGGGATATTTGTG
 GAAAGAATGTACAGACGGACATCAAACATGGTTGGGCTGAGCTATCCACCGGCTGTAATCGATGCATTGA
 AGGATGTGGATACGTGGTCTTCGATGTCTTTCCCTCAATGAGGCCAGTGGAGATCATGCACTGAAGTT
 CATTTTCTATGAATTACTCACACGTTATGACCTGATCAGCCGTTTTAAGATACCGATTTCTGCATTGTC
 TCAATTTGTGGAGGCCCTCGAAGTGGTTACAGCAAGCACAAAAATCCTTACCATAACCTGATGCATGCAG
 CTGACGTCACACAGACTGTGCATTACCTCCTTTATAAGACAGGAGTAGCAAACCTGGCTGACAGAGCTGGA
 GATCTTTGCAATAATCTTTTCGGCTGCCATCCATGACTATGAACATACTGGAACACAAAACATTTCCAC
 ATTCAGACTCGGTGAGATCCAGCTATCCTGTACAATGACAGATCTGTCCTGGAGAACCACCACCTGAGTG
 CAGCCTACCGCCTTCTGCAGGAAGACGAAGAGATGAATATTCTGGTTAACCTCTCAAAGGATGACTGGAG
 GGAGTTTCAACTTTGGTTATTGAGATGGTAATGGCCACAGATATGTCCTGTCAATTTCCAGCAAATCAA
 GCCATGAAGACAGCCCTGCAGCAACCAGAAGCAATTGAGAAGCCGAAAGCCTTATCCCTCATGTTACACA
 CAGCAGACATCAGTCATCCTGCGAAAGCATGGACCTGCACCAGCTGGACCATGTCTCTCTGGAGGA
 GTTCTTTAGACAGGGTGACAGAGAAGCAGAGCTGGGGCTGCCATTTTCTCCTTTTGTGACAGAAAAGTCA
 ACCATGGTTGCTCAGTCAACAAGTGGGTTTTATTGACTTATTGTGGAGCCACCTTCACTGTGCTCACGG
 ACATGACCGAGAAGATTGTGAGTCCATTAATTGACGAAAGCTCCCAGACTGGTGGGACAGGGCAGAGGAG
 ATCAAGTTTGAACAGCATCAACTCATCAGATGCAAAGCGATCCGGTGTCAAGAGTTCTGGGTGAGTGG
 AGTGCTCCCATCAACAATTCTGTCACTTCTGTTGACTATAAGAGTTTTAAAGCCACTTGGACTGAGGTGG
 TGCAGATCAATCGGGAGCGGTGGCGAGCCAAGGTACCCAAAGAAGAAAAAGCCAAGAAGGAAAGCTGAAGA
 GAAGGCTCGCCTGGCTGCTGAGGAAAAGCAAAGGAAATGGAAGCCAAAAGCCAAGCTGAACAAGGCACA
 ACCAGCAAAGGCGAGAAAAGACATCAGGAGAAGCCAAAAGTCAAGTCAATGGAACACGCAAGGGTGATA
 ACCCTCGTGGGAAGAACTCCAAAGGAGAAAAGGCAGGCGAAAAGCAGCAGAACGGTGACTTGAAAGACGG
 TAAAAATAAGGCAGACAAGAAGGATCACTCCAACACCGGAAATGAGTCAAAGAAAACAGATGATCCAGAG
 GAG

ACGCGTACGCGGCCGCTCGAG – GFP Tag – GTTTAA

Protein Sequence:

>MG209609 representing BC032277
 Red=Cloning site Green=Tags(s)

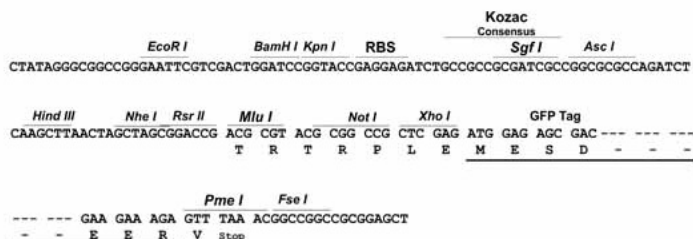
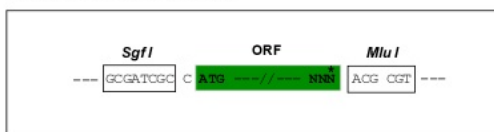
MESPTKEIEEFESNSLKHLLQPEQIEKIWLRLRGLRKYKTSQRLRSLVKQLERGEASVVDLKKNLEYAAT
 VLESVYIDETRLLDTEDELSDIQSDAVPSEVRDWLASTFTRQMGMLRRSDEKPRFKSIVHAVQAGIFV
 ERMYYRRTSNMVGLSYPPAVIDALKDVTWFSDFVSLNEASGDHALKFIYELLTRYDLISRFKIPISALV
 SFVEALEVGYSKHKNPYHNLMAADVTQTVHYLLYKTGVANWLTELEIFAIIFSAAIHDYEHTGTTNNFH
 IQTRSDPAILYNDRSVLENHHL SAAAYRLLQEDEEMNILVNL SKDDWREFRTLVIEMVMATDMSCHFQQIK
 AMKTLQQPEAIEKPKALSLMLHTADISHPAKAWDLHHRWTMSLLEEFFRQGDREAELGLPFSPLCDRKS
 TMVAQSQVGFIDFIVEPTFTVL TDMTEKIVSPL IDESSQTGGTGQRRSSLNSINSSDAKRSVKSQSSGSDG
 SAPINNSVIPVDYKSFKATWTEVVQINRERWRRAKVPKEEKAKKEAEKARLAAEEKQKEMEAQSQAEQGT
 TSKGEKKTSGEAKSQVNGTRKGDNPRGKNSKGEKAGEKQQNGDLKDGKNKADKDHSTGNESSKKTDDPE
 E

TRTRPLE – GFP Tag – V

Restriction Sites: SgfI-MluI

Cloning Scheme:

Cloning sites used for ORF Shutting:



ACCN: BC032277

ORF Size: 1895 bp

OTI Disclaimer: The molecular sequence of this clone aligns with the gene accession number as a point of reference only. However, individual transcript sequences of the same gene can differ through naturally occurring variations (e.g. polymorphisms), each with its own valid existence. This clone is substantially in agreement with the reference, but a complete review of all prevailing variants is recommended prior to use. [More info](#)

OTI Annotation: This clone was engineered to express the complete ORF with an expression tag. Expression varies depending on the nature of the gene.

Components: The ORF clone is ion-exchange column purified and shipped in a 2D barcoded Matrix tube containing 10ug of transfection-ready, dried plasmid DNA (reconstitute with 100 ul of water).

Reconstitution Method:

1. Centrifuge at 5,000xg for 5min.
2. Carefully open the tube and add 100ul of sterile water to dissolve the DNA.
3. Close the tube and incubate for 10 minutes at room temperature.
4. Briefly vortex the tube and then do a quick spin (less than 5000xg) to concentrate the liquid at the bottom.
5. Store the suspended plasmid at -20°C. The DNA is stable for at least one year from date of shipping when stored at -20°C.

RefSeq: [BC032277](#), [AAH32277](#)

RefSeq Size: 6154 bp

RefSeq ORF: 1895 bp

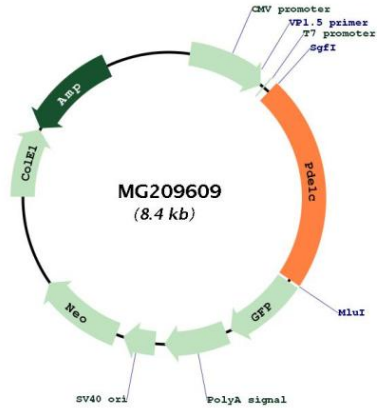
Locus ID: 18575

Cytogenetics: 6 27.65 cM

Gene Summary:

Calmodulin-dependent cyclic nucleotide phosphodiesterase with a dual-specificity for cAMP and cGMP, which are key regulators of many important physiological processes (PubMed:8810348). Exhibits high affinity for both cAMP and cGMP (By similarity). Modulates the amplitude and duration of the cAMP signal in sensory cilia in response to odorant stimulation, hence contributing to the generation of action potentials. Regulates smooth muscle cell proliferation. Regulates the stability of growth factor receptors, including PDGFRB (Probable).[UniProtKB/Swiss-Prot Function]

Product images:



Circular map for MG209609