

Product datasheet for **MG209608**

Rpn2 (BC046806) Mouse Tagged ORF Clone

Product data:

Product Type:	Expression Plasmids
Product Name:	Rpn2 (BC046806) Mouse Tagged ORF Clone
Tag:	TurboGFP
Symbol:	Rpn2
Synonyms:	1300012C06Rik; AV261018; Rpn-2
Mammalian Cell Selection:	Neomycin
Vector:	pCMV6-AC-GFP (PS100010)
E. coli Selection:	Ampicillin (100 ug/mL)



[View online »](#)

ORF Nucleotide Sequence:

>MG209608 representing BC046806
 Red=Cloning site Blue=ORF Green=Tags(s)

TTTTGTAATACGACTCACTATAGGGCGGCCGGAATTCGTCGACTGGATCCGGTACCGAGGAGATCTGCC
 GCC**CGCATCGCC**

ATGGCGCCGCGGGTTCAAGCGCTGTCTTCTGTGGCCCTGACAATCACTGCCAGCGTCCAGGCTCTGA
 CCCCACCCACTACCTCACCAAGCAGGATGTGAAAGGCTGAAGGCCTCACTGGACCGCCCTTCACAGA
 TTTGGAGTCTGCCTTCTACTCCATCGTGGGACTCAGCAGCCTTGGGGTACAGGTGCCAGATGTCAAGAAA
 GCGTGTACCTTCAAGTCCAACCTTGATCCCAGCAACGTGGATTCTCTTCTATGCAGCCCAGTCCA
 GCCAGGTCCTCTCAGGCTGTGAGATATCTGTTTCAAATGAGACCAAAGAGCTCCTGCTGGCAGCAGTGAG
 TGAAGACTCCCCATTGCCAGATCTACCATGCAGTTCAGCACTCAGCGGGTTTGGGCTTCCCTTGGCA
 TCCAATGAAGCCCTCGGTGCCCTTACCCTCGCCTCGGCAAGGAAGAGACTGTGCTAGCAACGGTCCAGG
 CTCTGCAGACAGCGTCCCACCTCTCCAGCAGGCTGACCTGAGGAACATTGTAGAGGAGATTGAGGACCT
 TGTGCTCGGCTGGATGAACTAGGGGGTGTGTATCTGCAGTTTGGGAAGGACTGGAGCTCACGGCGCTG
 TTTGTTGCTGCCACCTACAAGCTCATGGACCACGTGGGGACCGAACCCTCATGAAGGAGGATCAGGTTA
 TCCAGCTCATGAACACAATCTTACGAAGAAGAACTTTGAGTCCCTCTCAGAAGCCTTCACTGTGGCCTC
 TGCTGCTGCTGCATTGTCCCAGAATCGCTACCAGTACCAGTGGTGGTTGTGCCGAGGGCTCTACTTCT
 GACACTCAAGAACAGGCTATCCTGAGGTTGAGGTCAGCAATGTTTTGTCTCAGCCTCTGGCTCAAGCTG
 CAGTGAAGCTGGAGCATGCTAAGTCGGCGGCTACCAGGGTACCCTCTGCAGAAGACGCCCTTTTCGCT
 TGTGGGAATGTTTTGAGCTAACTTCAAGATGTTAACTTTCCAGTGGCTACTATGACTTCTCTGTC
 CGAGTTGAAGGTGACAGCCGTTACATTGCAAACACTGTAGAGCTCGAGTCAAGATCTCCACTGAAGTTG
 GCATCACAAATGTTGATCTTCCACTGTGGATAAGGATCAGAGCATTGCACCCAAAACACCCGGGTGAC
 CTACCCAGCCAAAGCCAAGGGTACATTCATCGCAGACAGCCATCAGAACCTTTGCCCTGTTTTCCAGCTG
 GTAGATGTGAACACCGGTGCGGAGCTCACCCCTACCAGACGTTTGTTCGACTTCATAACCAAGAAGACTG
 GCCAGGAAGTGGTGGTTGTGCTGAGCCAGATAACAAGAATGTATATAAGTTTGAAGTGGACACCTCTGA
 AAGGAAGATTGAATTTGACTCTGCCTCTGGCACCTACACACTCTACTTAATCATCGGGGATGCCACATTG
 AAGAACCAATCCTCTGGAACGTGGCTGACGTGGTTATCAAGTCCCTGAGGAGGAAGCCCCCTCGACTG
 TGCTGTCCAGAGCCTGTTTACCCAAAACAGGAAATTCAGCACCTGTTCCGAGAGCCTGAGAAGAGGCC
 CCCCACAGTGGTCCAATACATTCACGGCCCTCATCCTCTGCCCTTGCTCTGCTCTTTGCAGCTGGG
 ATCCGGATTGGAGCCAATGTCTCAACTTCACATTTGCTCCTAGCACAGTTATCTCCACCTGGGACATG
 CTGCGATGCTGGCCTCATGTATATCTACTGGACTCAGCTCAACATGTTCCAGACCTCAAGTACCTGGC
 TGTCTGGGCACTGTGACGTTTCTGGCTGGCAACCGAATGCTGGCCAGCATGCAGTTAAGAGAACAGCA
 CAT

ACGCGTACGCGGCCGCTCGAG - GFP Tag - GTTTAA

Protein Sequence:

>MG209608 representing BC046806
 Red=Cloning site Green=Tags(s)

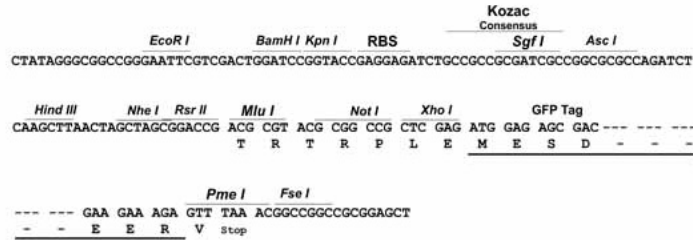
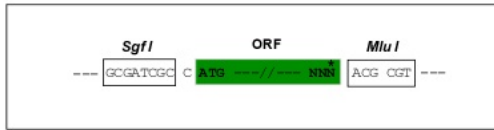
MAPPGSSAVFLLALTITASVQALTPHYLTKQDVERLKAASLDRPFTDLESAFYISIVGLSSLGVQVPDVKK
 ACTFIKSNLDPSNVDSLFYAAQSSQVLSGCEISVSNETKELLLAAVSEDSPIAQIYHAVAALSGFGLPLA
 SNEALGALTARLGKEETVLATVQALQTASHLSQQADLRNIVEEIEDLVARLDELGGVYLQFEELLETAL
 FVAATYKLMDHVGTPEPMKEDQVIQLMNTIFSKNFESLSEAFSVASAAAALSQNRHYHVPVVVPEGSTS
 DTQEQAILRLQVSNVLSQPLAQAARKLEHAKSAATRATVLRKTPFSLVGNVFELNFKNVKLSGGYDFSV
 RVEGDSRYIANTVELRVKISTEVGITNVDLSTVDKQSIAPKTRVYTPAKAKGTFIADSHQNFALFFQL
 VDVTGAEELTPHQTFRVRLHNQKQGQEVVFAEPDNKNVYKFEELDTSERKIEFDSASGTYTLYLIIIGD
 ATLNKPIILWNVADVVIKFPPEEAPSTVLSQSLFQTPKQEIQLHFRPEKRPPTVVSNTFTALILSPLLLFALW
 IRIGANVSNFTFAPSTVIFHLGHAAMLGLMIYWTQLNMFQTLKYLAVLGTVTFLAGNRMLAQHAVKRTA
 H

TRTRPLE - GFP Tag - V

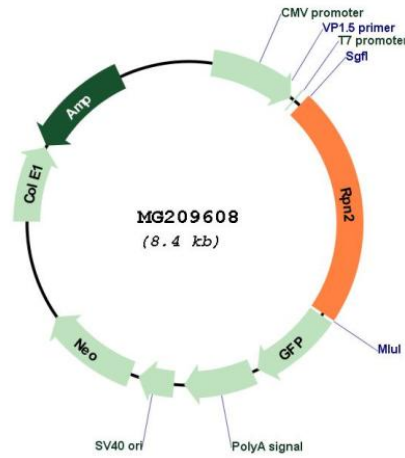
Restriction Sites: SgfI-MluI

Cloning Scheme:

Cloning sites used for ORF Shutting:



Plasmid Map:



ACCN: BC046806

ORF Size: 1895 bp

OTI Disclaimer:	The molecular sequence of this clone aligns with the gene accession number as a point of reference only. However, individual transcript sequences of the same gene can differ through naturally occurring variations (e.g. polymorphisms), each with its own valid existence. This clone is substantially in agreement with the reference, but a complete review of all prevailing variants is recommended prior to use. More info
OTI Annotation:	This clone was engineered to express the complete ORF with an expression tag. Expression varies depending on the nature of the gene.
Components:	The ORF clone is ion-exchange column purified and shipped in a 2D barcoded Matrix tube containing 10ug of transfection-ready, dried plasmid DNA (reconstitute with 100 ul of water).
Reconstitution Method:	<ol style="list-style-type: none">1. Centrifuge at 5,000xg for 5min.2. Carefully open the tube and add 100ul of sterile water to dissolve the DNA.3. Close the tube and incubate for 10 minutes at room temperature.4. Briefly vortex the tube and then do a quick spin (less than 5000xg) to concentrate the liquid at the bottom.5. Store the suspended plasmid at -20°C. The DNA is stable for at least one year from date of shipping when stored at -20°C.
RefSeq:	BC046806 , AAH46806
RefSeq Size:	2494 bp
RefSeq ORF:	1895 bp
Locus ID:	20014
Cytogenetics:	2 78.2 cM
Gene Summary:	Subunit of the oligosaccharyl transferase (OST) complex that catalyzes the initial transfer of a defined glycan (Glc(3)Man(9)GlcNAc(2) in eukaryotes) from the lipid carrier dolichol-pyrophosphate to an asparagine residue within an Asn-X-Ser/Thr consensus motif in nascent polypeptide chains, the first step in protein N-glycosylation. N-glycosylation occurs cotranslationally and the complex associates with the Sec61 complex at the channel-forming translocon complex that mediates protein translocation across the endoplasmic reticulum (ER). All subunits are required for a maximal enzyme activity.[UniProtKB/Swiss-Prot Function]