

Product datasheet for **MG209606**

Rhot1 (NM_021536) Mouse Tagged ORF Clone

Product data:

Product Type:	Expression Plasmids
Product Name:	Rhot1 (NM_021536) Mouse Tagged ORF Clone
Tag:	TurboGFP
Symbol:	Rhot1
Synonyms:	2210403N23Rik; AA415293; AF244542; AI834919; Arht1; C430039G08Rik; Miro1
Mammalian Cell Selection:	Neomycin
Vector:	pCMV6-AC-GFP (PS100010)
E. coli Selection:	Ampicillin (100 ug/mL)



[View online »](#)

ORF Nucleotide Sequence:

>MG209606 representing NM_021536
 Red=Cloning site Blue=ORF Green=Tags(s)

TTTTGTAATACGACTCACTATAGGGCGGCCGGAATTCGTCGACTGGATCCGGTACCGAGGAGATCTGCC
 GCC**CGCATCGCC**

ATGCGTGGCGGCCGAGTGGCCCTCGGAGCCTCCGACATGAAGAAAGACGTGAGGATCCTGCTGGTGG
 GAGAACCTCGAGTTGGGAAGACATCACTGATTATGTGCGTGGTCAGTGAAGAATTTCCGGAAGAGTTCC
 TCCCGAGCAGAAGAAATCACCATTCCAGCTGACGTCAACCCCTGAAAGAGTTCCAACACACATTGTCGAT
 TATTCAGAAGCAGAACAGAGTGATGAACAACCTTCATCAAGAAATATCACAGGCTAATGTTATCTGCATAG
 TTTATGCTGTTAAACAACAAACATTCTATTGATAAGGTAACAAGCCGATGGATTCTCTCATAAATGAAAG
 AACAGACAAAGACAGCAGGCTGCCTTTGATATTGGTTGGGAACAAATCTGATCTGGTGGAAATATAGTAGT
 ATGGAGACCATCCTTCCAATTATGAACCAAGTATACAGAGATAGAGACCTGTGTGGAGTGTTCAGCAAAAA
 ACCTAAAGAATATCTCAGAGCTGTTTTATTATGCACAGAAAGCTGTTCTTCATCTACAGGGCCTCTATA
 CTGCCAGAGGAGAAAGAGATGAAACCGGCTTGTATAAAGGCCCTCACTCGTATATTTAAAAATATCTGAT
 CAGGATAACGACGGCACTCTGAATGATGCTGAGCTCAACTTCTCCAGAGAATTTGTTTCAACACTCCTT
 TAGCTCCGCAAGCGCTGGAAGATGTCAAGAATGTGGTTAGAAAGCACTTAAGTGACGGTGTGGCTGACAG
 TGGGCTGACGCTCAGAGTTTTCTTTTTTACATACACTTTTTATCCAGAGGGGGAGGCATGAGACTACT
 TGGACTGTGCTTCGACGATTTGGTTATGACGATGACCTGGACCTGACGCCTGAGTATTTATCCCTGC
 TAAAAATACCTCCTGATTGCACTACTGAATTAATCATCATGCATATTTGTTTCTCCAGAGCACCTTTGA
 CAAACATGATTTGGACAGAGACTGTGCTTTGTGCGCTGATGAACTTAAAGATTTATTTCAAGTTTTCT
 TACATCCTTGGGACCAGATGTAATAACACAGTTTGCACAAATGAAAGAGGCTGGATAACCTACCAGG
 GGTTCTCTCCAGTGGACGCTCACCACTACTTAGATGTGACGGTTCCTGGAGATTTGGGATATCT
 AGGCTATTCCATACTGACGGAACAAGAGTCTCAAGCTTCAAGCATTACAGTAACAAGGGATAAAAAGATT
 GACCTGCAGAAAAACAGACTCAGAGAAATGTGTTGAGGTGTAATGTAATTGGAGTGAAAGGCTGTGGGA
 AAAGTGGAGTTCTTCAGTCTCTCCTTGGGAAGAAACCTAATGAGGCAGAGAAAAATTCGTGATGATCATAA
 GTCCTATTATGCAATTAACACTGTCTATGTATATGGACAAGAGAAATACTTGTGCTGCACGATATCTCA
 GAGTGGAAATTTCTAACTGAGGCTGAGACCATTGTGATGTTGTATGCCTGGTATATGATGTCACCAATC
 CCAATCCTTTGAATACTGTGCCAGGATTTTTAAGCAACATTTTATGGACAGCAGAAATCCCTGCTTGAT
 TGTAGTGCAAAGTCAGACCTGCATGAAGTCAAACAGGAACATAGCATCTCACCTACTGATTTCTGCAGG
 AAACACAAATGCCTCCACCTCAAGCCTCACTTGAATACTGCTGATGCCCCAGTAAGGATATCTTTG
 TTAAGTTGACAACAATGGCCATGTACCCGACGTGACACAAGCTGACCTCAAGAGCTCAAGCTTCTGGCT
 TCGCGCAAGCTTTGGTGCTACGGTCTTTGCAGTCGTGGGCTTTGCTATGTACAGGCACTACTGAAACAG
 CGA

ACGCGTACGCGGCCGCTCGAG - GFP Tag - GTTTAA

Protein Sequence:

>MG209606 representing NM_021536
 Red=Cloning site Green=Tags(s)

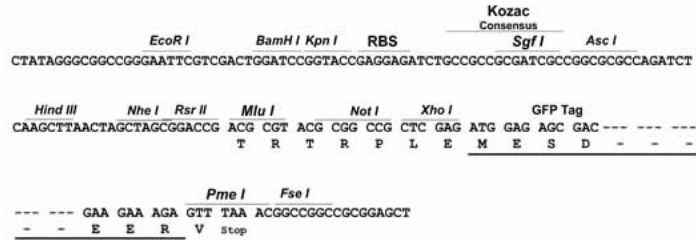
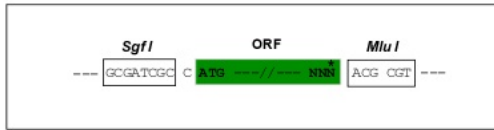
MRAGRVRPLRASDMKKDVRILLVGEPRVGTSLIMSLVSEEFPEEVPPRAEETIPADVTPERVPHIVD
 YSEAEQSDQLHQEISQANVICIVYAVNNKHSIDKVTSRWIPLINERTDKDSRLPLILVGNKSDLVEYSS
 METILPIMNQYTEIETCVCESAKNLKNISELFYYAQKAVLHPTGPLYCPEEKEMKPACIKALTRIFKISD
 QDNDGTLNDAELNFFQRICFNTPLAPQALEDKVNVVRKHLSDGVADSLTLRGFLFLHTLFIQRGRHETT
 WTVLRRFGYDDDLDTPEYLFPLLKIPPDCTTELNNHAYLFLQSTFDKHDLDRCALSPDELKDLFQVFP
 YIPWGPVDVNTVCTNERGWITYQFLSQWLTLYLDVQRCLEYLGYLGYLSILTEQESQASAITVTRDKKI
 DLQKKQTQRNVFRCNVIGVKGCGKTGVLQSLGRNLMRQKIRDDHKSYYAINTVYVYGQEKYLLLDHDS
 ESEFLTEAETICDVVCLVYDVTNPKSFYECARIFKQHFMDSRIPCLIVAASDLHEVKQEHISPTDFCR
 KHKMPPQAFNTADAPSKDIFVKLTTMAMYPHVTQADLKSSTFWLRASFGATVFVAVVGFAMYRALLKQ
 R

TRTRPLE - GFP Tag - V

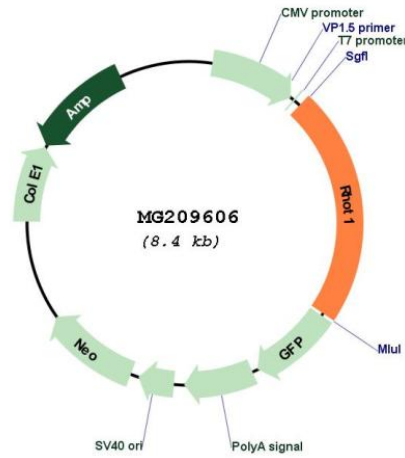
Restriction Sites: SgfI-MluI

Cloning Scheme:

Cloning sites used for ORF Shutting:



Plasmid Map:



ACCN: NM_021536

ORF Size: 1893 bp

OTI Disclaimer:	The molecular sequence of this clone aligns with the gene accession number as a point of reference only. However, individual transcript sequences of the same gene can differ through naturally occurring variations (e.g. polymorphisms), each with its own valid existence. This clone is substantially in agreement with the reference, but a complete review of all prevailing variants is recommended prior to use. More info
OTI Annotation:	This clone was engineered to express the complete ORF with an expression tag. Expression varies depending on the nature of the gene.
Components:	The ORF clone is ion-exchange column purified and shipped in a 2D barcoded Matrix tube containing 10ug of transfection-ready, dried plasmid DNA (reconstitute with 100 ul of water).
Reconstitution Method:	<ol style="list-style-type: none">1. Centrifuge at 5,000xg for 5min.2. Carefully open the tube and add 100ul of sterile water to dissolve the DNA.3. Close the tube and incubate for 10 minutes at room temperature.4. Briefly vortex the tube and then do a quick spin (less than 5000xg) to concentrate the liquid at the bottom.5. Store the suspended plasmid at -20°C. The DNA is stable for at least one year from date of shipping when stored at -20°C.
RefSeq:	NM_021536.6 , NP_067511.4
RefSeq Size:	4077 bp
RefSeq ORF:	1896 bp
Locus ID:	59040
UniProt ID:	Q8BG51
Cytogenetics:	11 47.62 cM
Gene Summary:	Mitochondrial GTPase involved in mitochondrial trafficking. Probably involved in control of anterograde transport of mitochondria and their subcellular distribution (By similarity). [UniProtKB/Swiss-Prot Function]