

Product datasheet for **MG209593**

Aoc3 (BC080857) Mouse Tagged ORF Clone

Product data:

Product Type:	Expression Plasmids
Product Name:	Aoc3 (BC080857) Mouse Tagged ORF Clone
Tag:	TurboGFP
Symbol:	Aoc3
Synonyms:	SSAO, VAP1
Mammalian Cell Selection:	Neomycin
Vector:	pCMV6-AC-GFP (PS100010)
E. coli Selection:	Ampicillin (100 ug/mL)



[View online »](#)

ORF Nucleotide Sequence:

>MG209593 representing BC080857
 Red=Cloning site Blue=ORF Green=Tags(s)

TTTTGTAATACGACTCACTATAGGGCGGCCGGAATTCGTCGACTGGATCCGGTACCGAGGAGATCTGCC
 GCC**GCGATCGCC**

ATGACCCAGAAGACCACCCTAGTCTCCTGGCTCTGGCTGTCATCACCATCTTTGCTTTGGTTTGTGTCT
 TGCTAGCTGGCAGGAGCGGAGATGGGGTGGACTGAGCCAACCTTTCATTGCCCTCTGTTCTTCTCTAG
 TGTCAGCCCGGACACACCCTAGCCAGAGCCAGCCGTTTGCAGACCTGAGCCCAGAGGAGCTGACAGCT
 GTGATGAGCTTCTGACCAAGCACCTGGGGCCAGGGCTGGTGGATGCAGCCCAGGCTCGACCCTCGGACA
 ACTGTGTCTTCTCAGTAGAGTTGCAGCTGCCTGCCAAGGCTGCAGCCCTGGCCACTTGGACAGAGGGGG
 GCCCCACCTGTGAGAGAGGCATTGGCCATCATCTTCTTTGGTGGACAACCCAAGCCCACTGAGTGAG
 CTGGTGGTGGGGCCCTGCCTACCCCTCTACATGCGGGATGTGACTGTGGAGCGCCACGGCGGCCCC
 TGCCCTATTACCGCGTCTGTGTTGGACAGAGATATCAGGATATCGAGGAGATGATCTCCACAGAGA
 GCTGCCCAAGCTTCTGGACTCTCCATCACTGTTGCTTCTACAAACACCAGGGACAGAACCTGCTAACA
 ATGACTACAGCCCCCGTGGTTTGAATCAGGGGACCGGCCACCTGGTTTGGCTTGTATTACAATCTCT
 CAGGGGCTGGGTTTTACCTCACCCATTGGCTTGGAGCTTCTGATAGATCATAAGGCCCTGGATCTCGC
 CCTGTGGACATCCAGAAGGATTTCTATCAAGGCCGTTACTATGAGAGTCTCACTCAGCTGGAGGACCAG
 TTTGAGGCTGGCTGGTGAATGTGGTATTGGTCCCAAACAATGGTACAGGTGGTCTGGTCTCTAAAGT
 CCTCAGTGCCACCGGGCCAGCTCCCCCTCTGCAGTCCATCCCCAGGGACCCCGGTTCAAGTGTCCAGGG
 GAGCCAAGTGTCTTCTTCTTGTGGCTTTTTCTTTGGCCTTGGAGCTTTCAGTGGCCAAAGGATCTTT
 GATATCCGCTTCAAGGGGAGAGGGTGGCTATGAAATCAGTGTCCAGGAGGCCATAGCCCTCTACGGTG
 GAAATTTCCAGCATCAATGTCGACCTGCTACGTGGACGCTAGCTTTGGCATTGGCAAATCTCTACCCC
 CCTGATCCGAGGGTAGACTGTCCTTACCTCGCCACCTATGTGGACTGGCACTTCTTCTGGAATCTCAG
 GCCCCAAAGACTACGTGATGATTTTGTGTTTGAACAGAACCAGGGCCTCCCACTCCGCGGCGACC
 ACTCAGATTTCTACTCCATTATTTGGGGTGTGTGGGGACGGTGTGTGGTGTGATCCGTGTCTAC
 CTTGCTCAATTACGACTACATATGGGACATGGTCTTCCACCCCAATGGGGCCATAGAAGTCAAATCCAC
 GCCACAGGCTATATCAGCTCAGCTTCTTCTTCTCGGTGCTGGTGTGAGAGTTTGGGAACCGAGTTGGGGCGC
 ACACGCTGGGCACGGTACACACCCACAGCGCTCACTTCAAAGTGGATCTGGATGTGGCAGGGCTGAAGAA
 CTGGCCCTGGGCAGAGGATATGGCTTTTGTCCCCAGATTGTACCTTGGCAACCGGAGTACCAGATGCAG
 AGGCTGCAGGTGACTCGAAGCTGCTGGAGACAGAGGAGGAGGCTGCCTTCCACTGGGGGGCGCCACCC
 CAGCTACCTGTACCTGGCCAGTAACCACAGCAACAAGTGGGGTATAGGCGGGCTACCGCATCCAGAT
 ACTCAGCTTTGCTGAAAAGCCCTTGCCCAAGAAAGTCCCATAGAGAAAGCCTTACCTGGGGGAGG

ACGCGTACGCGGCCGCTCGAG - GFP Tag - GTTTAA

Protein Sequence:

>MG209593 representing BC080857
 Red=Cloning site Green=Tags(s)

MTQKTTLVLLALAVITIFALVCLLAGRSGDGGGLSQPLHCPVLPVSVQPRTHPSQSQPFADLSPEELTA
 VMSFLTKHLGPGLVDAQAQRPDNCVFSVELQLPAKAAALAHLDKGGPPPVREALAIIFFGGQPKPNVSE
 LVVGPLPHPSYMRDVTVERHGGPLPYRRPVLDREYQDIEEMIFHRELPAQASGLLHHCCFYKHQQNLLT
 MTTAPRGLQSGDRATWFLYYNL SGAGFYHPHIGLELL IDHKALDPALWTIQKVFYQGRYYESLTQLEDQ
 FEAGLVNVVLPVNGTGGWSLKS SVPPGPAPPLQFHPQGRFSVQGSQVSSSLWAFSFGGLGAFSGPRIF
 DIRFQGERVAYEISVQEAIALYGGNSPASMSTCYVDGSFGIGYSTPLIRGVDCPYLATYVDWHFLLESQ
 APKTLRDAFCVFEQNQGLPLRRHSDFYSHYFGVVGTVLVVRSVSTLLNYDYIWDVVFHPNGAIEVKFH
 ATGYISSAFFFGAGEKFGNRVGAHTLGTVHTSAHFVKVDL DVAGLKNWAWAEDMAFVPTIVPQPEYQMQ
 RLQVTRKLLLETEEEAFLGGATPRYL YLASNHSNKWGHRRGRIQILSFAGKPLPQESP IEKAFTWGR

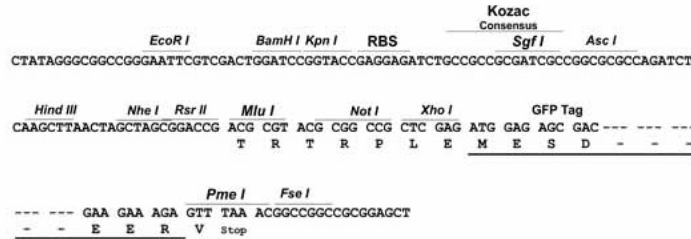
TRTRPLE - GFP Tag - V

Restriction Sites:

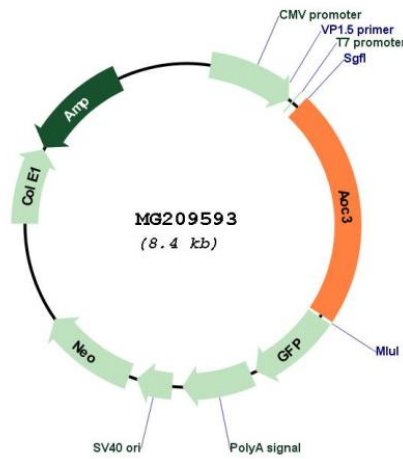
Sgfl-MluI

Cloning Scheme:

Cloning sites used for ORF Shutting:



Plasmid Map:



ACCN: BC080857
 ORF Size: 1889 bp

OTI Disclaimer:	The molecular sequence of this clone aligns with the gene accession number as a point of reference only. However, individual transcript sequences of the same gene can differ through naturally occurring variations (e.g. polymorphisms), each with its own valid existence. This clone is substantially in agreement with the reference, but a complete review of all prevailing variants is recommended prior to use. More info
OTI Annotation:	This clone was engineered to express the complete ORF with an expression tag. Expression varies depending on the nature of the gene.
Components:	The ORF clone is ion-exchange column purified and shipped in a 2D barcoded Matrix tube containing 10ug of transfection-ready, dried plasmid DNA (reconstitute with 100 ul of water).
Reconstitution Method:	<ol style="list-style-type: none">1. Centrifuge at 5,000xg for 5min.2. Carefully open the tube and add 100ul of sterile water to dissolve the DNA.3. Close the tube and incubate for 10 minutes at room temperature.4. Briefly vortex the tube and then do a quick spin (less than 5000xg) to concentrate the liquid at the bottom.5. Store the suspended plasmid at -20°C. The DNA is stable for at least one year from date of shipping when stored at -20°C.
RefSeq:	BC080857 , AAH80857
RefSeq Size:	4267 bp
RefSeq ORF:	1889 bp
Locus ID:	11754
Cytogenetics:	11 D
Gene Summary:	Cell adhesion protein that participates in lymphocyte recirculation by mediating the binding of lymphocytes to peripheral lymph node vascular endothelial cells in an L-selectin-independent fashion. Has a monoamine oxidase activity. May play a role in adipogenesis (By similarity).[UniProtKB/Swiss-Prot Function]