

Product datasheet for **MG209586**

Ick (NM_019987) Mouse Tagged ORF Clone

Product data:

Product Type:	Expression Plasmids
Product Name:	Ick (NM_019987) Mouse Tagged ORF Clone
Tag:	TurboGFP
Symbol:	Ick
Synonyms:	2210420N10Rik; A1848300; Mrk
Mammalian Cell Selection:	Neomycin
Vector:	pCMV6-AC-GFP (PS100010)
E. coli Selection:	Ampicillin (100 ug/mL)



[View online »](#)

ORF Nucleotide Sequence:

>MG209586 representing NM_019987
 Red=Cloning site Blue=ORF Green=Tags(s)

TTTTGTAATACGACTCACTATAGGGCGGCCGGAATTCGTCGACTGGATCCGGTACCGAGGAGATCTGCC
 GCC**CGCATCGCC**

ATGAATAGATACACAACGATCAAGCAGCTTGGGGATGGGACCTACGGCTCTGTCTGCTGGGGAGAAGCA
 TTGAGTCTGGAGAACTGATTGCCATTAATAAAGAAAGTTTACTCCTGGGAAGAATGCATGAA
 CCTTCGGGAGGTTAAGTCTTTAAAGAAGCTTAATCATGCCAATATCGTAAAGTTAAAGAGGTTATCAGG
 GAAAACGACCATCTTTACTTTATCTTCGAGTACATGAAGGAAAACCTTTACCAGCTCATTAAAGAAAGAA
 ATAAGTTGTTCCAGAGTCTGCTATAAGGAATATAATGTACCAGATATTGCAAGGACTGGCATTCA
 CAAACACGGTTTCTCCACCGGGACTTAAACCCGAGAACCTCCTCTGCATGGGACCAGAAGCTTGTA
 ATCGCCGACTTTGGATTGGCTCGAGAAATCCGATCAAGACCTCCGTACACAGACTATGTGTCTACTAGAT
 GGTACAGGGCTCCAGAGTACTGCTGAGATCCACCAACTACAGCTCCCCATTGACATCTGGGCGGTAGG
 CTGCATCATGGCGGAGGTGTACACGCTCCGGCCCTTTTCCCTGGGGCCAGTGAAATTGACACAATTTTC
 AAAATTTGCCAAGTGTGGGAACACAAAGAAGACTGACTGGCCTGAAGGCTACCAAGCTGTCAAGTGCTA
 TGAATTTCTCTGGCCCCAGTGCATACCAATAACTTAAAGACTCTAATCCCAATGCTAGCAGCGAAGC
 CATTACAGCTCCTGAGAGACTTGCTTCAGTGGGATCCCAAGAAACGACCAACCGCTAGTCAGGCTCTTCGA
 TATCCTTACTTCCAGATCGGACACCCACTGGGCATCATCAGCAAGGACTCAGGAAAACACAGAGAGAGG
 TCCAGGACAAGACAGGCCCTCCTCCTTACATCAAGCCAGCCCCTCCTGCCAGGCCCCGGCCAAGGCATA
 TACGCTGATTTCTTACGACCAAGCCAAGCCAGTCAAGCCCTCAGCATTCTGTGCACCCCTACAAAGGC
 GATGTCTTAGGACTGAGCAGCTGAGCCATGTTCCAGGAGGGCAAGCCAAGCCCTCCATTTCCCATCCC
 TCCACAATAAGAATCTTACGCCAAAACTAGCCAGCCTGGAACAGAAAAATGGTGAATCAAGCCAAA
 GAGCAGGAGAAGATGGGGTCTCATCTCCAGGTCGACAAAGGGTTCTGACGACTGGGCCGACTTGGATGAC
 TTAGACTTCAGTCCCTCTCACCAGGATAGATGTAAAAAACAAGAAGAGACAGAGTGTGACACCCCTC
 GCAGGTTTGAAAGTGTCTGGACCTGAAGCCATCTGAGTCAGTGGGTACAGGAACCACTGTCTCCACGCA
 GGCTTCTCGCAGAGGAGAGACACGCCGACCTGCAGTCTCAGCAAAGCAGCACTACTTGAAGCACTCT
 CGCTACTTGCCTGGAATAAATAAAGAAATGGCGTCTCCCAATCCAGGCAAGGACTTTCTTCCATCAA
 ATTCATGGTCCAGTTCGGCTTGTCTGGAAAATCTTCAGGAACAGTATCAGTAGTGAGCAAATAAATTC
 AGTTGGCTCAGGCTCTGCGAGCTCTAGTGGACTGACTGGAAGCTACATCCCTTCTTTGAAAAAGGAA
 ATCGGTTCTGTATGCAGAGGTTTCAGCTGGCGCCCTCGCAGCCCTCCCCCGGCTACTTCCCTCA
 AGGCCGTGAGACCTACCCGGGGAGGCCTTTCTTTACACCCAGCCAGGAGCACGCCCGGCTTGATCCC
 CCGACCTCCAGCTGCTCAGCCTGTGCACGGCAGGATAGACTGGTCTTCCAAGTACCCATCCCGGGCG

ACGCGTACGCGGCCGCTCGAG – GFP Tag – GTTTAA

Protein Sequence:

>MG209586 representing NM_019987
 Red=Cloning site Green=Tags(s)

MNRYTTIKQLGDGTYGSVLLGRSIESGELIAIKMKRKFYSWEECMNLREVKSLKLNHANIVKLKEVIR
 ENDHLYFIFEYMKENLYQLIKERNKLPESAIRNIMYQILQGLAFIHKHGFHFRDLKPENLLCMGPVLK
 IADFLAREIRSRPPYTDYVSTRWYRAPEVLLRSTNYSSPIDIWAVGCIMAEVYTLRPLFPGASEIDTIF
 KICQVLGTPKKTDPWEGYQLSSAMNFWPQCIPNNLKTLPNASSEAIQLLRDLLQWDPKRPRTASQALR
 YPYFQIGHPLGIISKDSGKPPQREVQDKTGGPPYIKPAPPAQAPAKAYTLISSRPSQASQPPQHSVHPYKG
 DVSRTQLSHVQEGKPSPPFFPSLHNKLNLPKILASLEQKNGEIKPKSRRRWGLISRSTKGSDDWADLDD
 LDFSPSLTRIDVKNKRQSDDTLCRFESVLDLKPSESVGTGTTVSTQASSQRRTPTLQSSAKQHYLKHS
 RYLPGINIRNGVLPNPGKDFLPSNSWSSSLSGKSSGTVSVVSKITSVSGSASSSGLTGSYIPSLKKE
 IGSVMQRVQLAPLAAPPPGYSSLKAVRPHPRPFHTQPRSTPGLIPRPPAAQPVHGRIDWSSKYPSRR

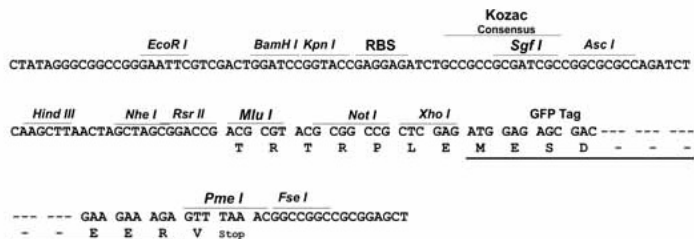
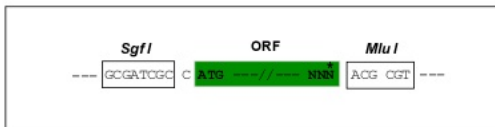
TRTRPLE – GFP Tag – V

Restriction Sites:

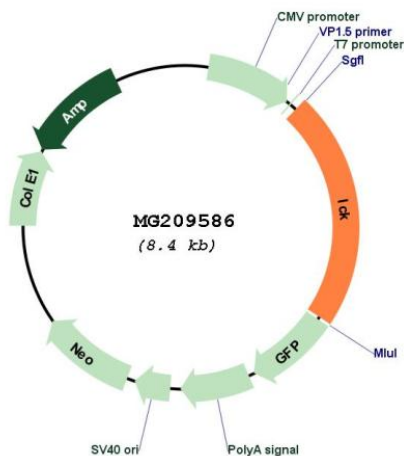
SgfI-MluI

Cloning Scheme:

Cloning sites used for ORF Shutting:



Plasmid Map:



ACCN: NM_019987
 ORF Size: 1887 bp

OTI Disclaimer:	The molecular sequence of this clone aligns with the gene accession number as a point of reference only. However, individual transcript sequences of the same gene can differ through naturally occurring variations (e.g. polymorphisms), each with its own valid existence. This clone is substantially in agreement with the reference, but a complete review of all prevailing variants is recommended prior to use. More info
OTI Annotation:	This clone was engineered to express the complete ORF with an expression tag. Expression varies depending on the nature of the gene.
Components:	The ORF clone is ion-exchange column purified and shipped in a 2D barcoded Matrix tube containing 10ug of transfection-ready, dried plasmid DNA (reconstitute with 100 ul of water).
Reconstitution Method:	<ol style="list-style-type: none">1. Centrifuge at 5,000xg for 5min.2. Carefully open the tube and add 100ul of sterile water to dissolve the DNA.3. Close the tube and incubate for 10 minutes at room temperature.4. Briefly vortex the tube and then do a quick spin (less than 5000xg) to concentrate the liquid at the bottom.5. Store the suspended plasmid at -20°C. The DNA is stable for at least one year from date of shipping when stored at -20°C.
RefSeq:	NM_019987.1
RefSeq Size:	2326 bp
RefSeq ORF:	1890 bp
Locus ID:	56542
UniProt ID:	Q9JKV2
Cytogenetics:	9 E1
Gene Summary:	Has an essential role in ciliogenesis, particularly in neuronal and retinal progenitor cells (PubMed:24797473). Phosphorylates KIF3A (PubMed:24797473). Involved in the control of ciliary length (PubMed:24853502). Regulates the ciliary localization of SHH pathway components as well as the localization of IFT components at ciliary tips (PubMed:24797473, PubMed:24853502). May play a role in cardiac development (By similarity). Regulates intraflagellar transport (IFT) speed and negatively regulates cilium length in a cAMP and mTORC1 signaling -dependent manner and this regulation requires its kinase activity (PubMed:25243405).[UniProtKB/Swiss-Prot Function]