

Product datasheet for **MG209576**

Slc6a12 (NM_133661) Mouse Tagged ORF Clone

Product data:

Product Type:	Expression Plasmids
Product Name:	Slc6a12 (NM_133661) Mouse Tagged ORF Clone
Tag:	TurboGFP
Symbol:	Slc6a12
Synonyms:	BGT1; Gabt2; GAT-2; GAT2
Mammalian Cell Selection:	Neomycin
Vector:	pCMV6-AC-GFP (PS100010)
E. coli Selection:	Ampicillin (100 ug/mL)



[View online »](#)

ORF Nucleotide Sequence:

>MG209576 representing NM_133661
 Red=Cloning site Blue=ORF Green=Tags(s)

TTTTGTAATACGACTCACTATAGGGCGGCCGGAATTCGTCGACTGGATCCGGTACCGAGGAGATCTGCC
 GCC**CGGATCGCC**

ATGTCATCAAGAGCTTGGGAAGAAAGGGCTCCCTATCCAGTATGGACAGGAAGGTTGCAGTCCATGAAG
 ATGGCTATCCTGTGGTCTCTTGGGTCCTGAGGAAGGAGAGATGATGGACCAGAAAGCAAGGACCAGGT
 GAAGGATCGTGGCCAATGGACCAACAAGATGGAGTTTGTGCTGTCACTGGCTGGAGAGATCATTGGCTTA
 GGCAACGTCTGGAGGTTCCCTATCTCTGCTACAAGAATGGAGGTGGAGCTTTCTTCATCCCTACTTCA
 TCTTCTTCTCAGCTGTGGCATCCAGTGTCTTCTGGAGGTGGCACTGGCCAGTATAGCAGCCAGGG
 GAGTGTGACTGCTGGAGGAAGATCTGTCCCTCCTCAAAGGCATTGGCATGGCCTCTGTGGTATCGAG
 TCTTATTTGAACATCTACTACATTATCATCCTTGCTGGGCTCTTCTACCTGTTGAGTCTTCCACT
 GGGAGCTTCCCTGGACAACCTGCACCAACTCGTGAACACAGAGCACTGCGTGGACTTTCTGAATCACTC
 ATCGGCCAGAGGAGTGAAGTCTTCTGAGAACTTTACCTCGCTGTCATGGAATTCGGGAGAGACGGGTT
 TTGGGTATTACATCGGGCATCCACGACCTGGGGTCCCTGCGTTGGGAGCTGGCCTTGTGCCTCCTGCTTG
 CCTGGATTATCTGCTACTTCTGCATCTGGAAGGGGTCAGTCCACAGGCAAGGTTGTTACTTACAGC
 CACTTTTCCCTACCTGATGCTGATTATTCTTCTGATCCGGGGTGTACCCTTCTGGAGCCTACCAGGGC
 ATCGTCTTCTACCTGAAGCCAGACTTGCTCCGTCTCAAGGACCCAGGTGTGGATGGATGCGGGCACCC
 AGATCTTCTTTTCTTGGCATCTGCCAGGGGTGCTGACAGCCCTGGGAGCTACAACAAGTACCACAA
 CAACTGCTACAGGACTCCATCGCCCTGTCTTCTGAACAGTGTACCAGCTTCGTGGCTGGGTTGTT
 GTCTTCTCCATCTTGGGCTTCACTGCTCAGGAGCAGGGAATACCCATTTCTGAAGTGGCTGAGTCAGGTC
 CTGGGCTGGCCTTATTGCCTTCCCAAAGCTGTCACCATGATGCCTTTGTCCAGCTGTGGTCTCGCT
 CTCTTTCATCATGCTCCTGTTTCTAGGGCTGGACAGCCAGTTCGTCTGTATGGAGTGCCTGGTGACCGCT
 TCCATGGATATGTTCCCTCAGCAGCTCCGAAAGAGTGGCCGCGGGAGCTGCTGATCCTCGCTATCTCTG
 TTTTGTGCTACTTGTGGGGCTCCTTTTGGTCACAGAGGGCGGGATGTATATCTTCCAGCTCTTTGACTA
 CTACGCCCTCCAGCGGCATATGCCTACTTCTCTCTCTGTTTGGAGTGTCTGCATTGGCTGGGTGTAT
 GGGGCCGACCGTTTCTATGACAACGTGGAAGACATGATTGGCTATCGGCCATGGCCCTTGGTGAAGATCT
 CCTGGCTCTTCTGACTCCTGGCCTTGGCTGGCCACTTCTTCTCTCCTTGGCAAGTATACACCTCT
 CAAATACAACAATGTCTACATGTATCCTTCTGGGGATACTCCATTGGATGGCTCTTGGCTTCTCTCC
 ATGGCCTGTGTCCACTTTTATCATCATCACCTTCTGAAGACCCAGGGCTCCTCAAGAAGCGTCTTC
 GAAGACTCATCACACCAGACCCAGTCTGCCCCAGCCAGGGCGGCCACCACAGGATGGCTCCTCTGC
 TCAAAACTGTTCGCTCTCCAGCCAAACAAGAACTCATTGCCTGGGAGAAGGAGACTCATTGG

ACGCGTACGCGGCCGCTCGAG – GFP Tag – GTTTAA

Protein Sequence:

>MG209576 representing NM_133661
 Red=Cloning site Green=Tags(s)

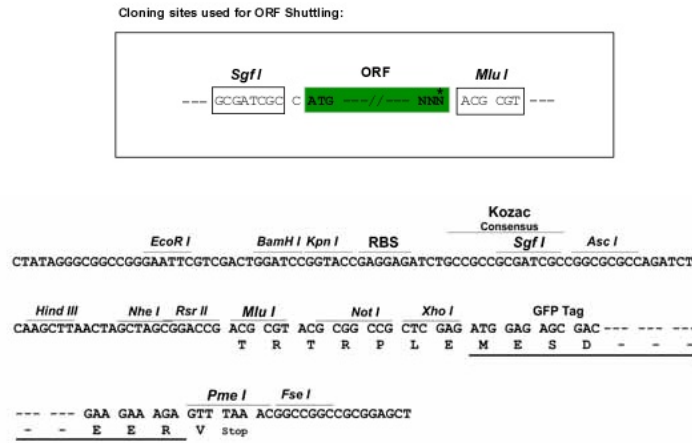
MSSRAWEERASLSSMDRKVAVHEDGYPVSWVPEEGEMMDQKKGDKVQKDRGQWTNKMFLVSVAGEIIGL
 GNVWRFYLYCYKNGGGAFFIPYFIFFFSCGIPVFFLEVALGQYSSQGSVTAWRKICPLLQIGMASVVIE
 SYLNIYYIIILAWALFYLFSSFTWELPWTCTNSWNTEHCVDLNLHSSARGVSSSENFTSPVMEFWERRV
 LGITSGIHDLGSLRWELALCLLLAWIICYFCIWKGVKSTGKVVYFTATFPYMLIILLIRGVTLPGAYQG
 IVFYLPDILLRLKDPQVWMDAGTQIFFSFAICQGLTALGSYNKYHNNCYRDSIALCFLNSATSFVAGFV
 VFSILGFMSQEQIPISEVAESGPGLAFIAFPKAVTMMPLSQLWSCLFFIMLLFLGLDSQFVCMELVTA
 SMDMFPQQLRKSGRRELLILAIISVLCYLMGLLLVTEGGMYIFQLFDYASSGICLLFLSLFEVICIGWVY
 GADRFYDNVEDMIGYRPWPLVKISWLFLTPGLCLATFFFSLSKYTPLKYNNVYMYPSWGISIGWLLAFSS
 MACVPLFIIITFLKTQGSFKRLRRLITPDPSPLPQGRPPQDGSQAQNCSSSPAKQELIAWEKETHL

TRTRPLE – GFP Tag – V

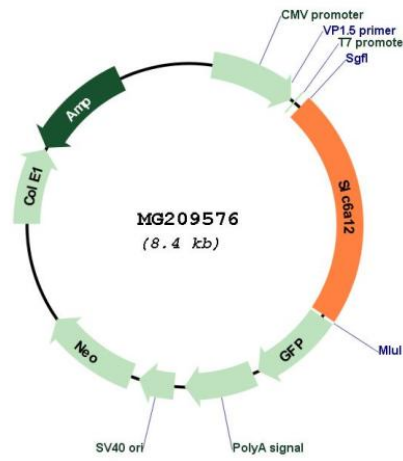
Restriction Sites:

SgfI-MluI

Cloning Scheme:



Plasmid Map:



ACCN: NM_133661
 ORF Size: 2560 bp

OTI Disclaimer:	The molecular sequence of this clone aligns with the gene accession number as a point of reference only. However, individual transcript sequences of the same gene can differ through naturally occurring variations (e.g. polymorphisms), each with its own valid existence. This clone is substantially in agreement with the reference, but a complete review of all prevailing variants is recommended prior to use. More info
OTI Annotation:	This clone was engineered to express the complete ORF with an expression tag. Expression varies depending on the nature of the gene.
Components:	The ORF clone is ion-exchange column purified and shipped in a 2D barcoded Matrix tube containing 10ug of transfection-ready, dried plasmid DNA (reconstitute with 100 ul of water).
Reconstitution Method:	<ol style="list-style-type: none">1. Centrifuge at 5,000xg for 5min.2. Carefully open the tube and add 100ul of sterile water to dissolve the DNA.3. Close the tube and incubate for 10 minutes at room temperature.4. Briefly vortex the tube and then do a quick spin (less than 5000xg) to concentrate the liquid at the bottom.5. Store the suspended plasmid at -20°C. The DNA is stable for at least one year from date of shipping when stored at -20°C.
RefSeq:	NM_133661.3 , NP_598422.2
RefSeq Size:	2582 bp
RefSeq ORF:	1887 bp
Locus ID:	14411
Cytogenetics:	6 F1