

## Product datasheet for **MG209574**

### Jph4 (BC052722) Mouse Tagged ORF Clone

#### Product data:

Product Type:	Expression Plasmids
Product Name:	Jph4 (BC052722) Mouse Tagged ORF Clone
Tag:	TurboGFP
Symbol:	Jph4
Synonyms:	JP-4, JPHL1
Mammalian Cell Selection:	Neomycin
Vector:	pCMV6-AC-GFP (PS100010)
E. coli Selection:	Ampicillin (100 ug/mL)



[View online »](#)

**ORF Nucleotide Sequence:**

>MG209574 representing BC052722  
 Red=Cloning site Blue=ORF Green=Tags(s)

TTTTGTAATACGACTCACTATAGGGCGGCCGGAATTCGTCGACTGGATCCGGTACCGAGGAGATCTGCC  
 GCC**CGGATCGCC**

ATGTCCTCCCGGGGCAAGTTCGACTTTGACGACGGGGCTGCTACGTGGGGGCTGGGAGCGGGGCGGG  
 CACATGGCTACGGCGTGTGCACCGGGCCCGCGCCAGGGAGAGTACAGCGGCTGCTGGGCTCACGGCTT  
 CGAGTCGCTGGGTGTCTTACGGGGCCCGCGGACACAGTTACCAGGGCCACTGGCAGCAGGGCAAGCGC  
 GAAGGGCTGGGCGTGGAGCGCAAGAGCCGCTGGACCTACCGCGCGAGTGGCTGGGCGGGCTGAAGGGG  
 GCAGCGCGGTATGGGAGAGCGTGTCCGGCTGCGCTACGCGGGCTCTGGAAGGACGGCTTCCAGGACGG  
 CTACGGCACCGAGACCTACTCGGATGGAGGCATTACCAAGGCCAGTGGCAAGCCGGGAAACGCCACGGC  
 TACGGGGTGCCTAAAGTGTACCCTACCACCAGGCGCGCTTCTGCGCTCACCCCGCGCACCTCCCTGG  
 ACTCCGGCCACAGCGACCCCGGACGCCCTCCACCCCTACCCCTACCAGGAGATGAAGGAGGCAGCCC  
 AGCCTCCGGCTCCCGAGGCGGCTTCGTGCTGGCGGGGCCAGGGGACGCCAGCGGGCGTCTTCCCGTAAG  
 CGACCCACAGCAGAGTGGATTCTTCCGCCGTTCACTGCTGCTCAGCGGGCTCCGGGCTGGTGGGCGCC  
 GCAGCTCCCTGGGCGCAAGAGGGGATCTCTACGACGAGAGTGGAGCAGCAAGTGGGCAGTACAGGACC  
 CCCGGGCTCCGAGGCCAGCGGGCCCAATCCCAGCTCCACCTGCCCTCATCGAGGGCTCAGCCACTGAG  
 GTGTACGCCGGTGGTGGCGTGGGACCGGCGCAGTGGCTATGGAGTGGCCAGAGATCCAACGGGCTGC  
 GCTACGAAGGCGAGTGGCTGGGCAACCGACGCCACGGATACGGGCGCACCCCGGCCGATGGCTCCCG  
 TGAGGAGGGCAAGTACAAGCGTAACCGGCTGGTACACGGGGACGTGTCCGACGCTCCTGCCTCTGGCC  
 CTTAGACGGGGCAAAGTCAAGGAGAAAGTGGACAGGGCTGTGAAAGTGGCCGTCGAGCTGTGAGTGTG  
 CCCGCCAGCGCCAGGAAATTGCGGCTGCCAGGGCAGCAGACGCCCTCTAAAAGCAGTGGCAGCCAGCAG  
 CGTCGCGGAGAAGGCTGTGGAGGCTGCGCGGATGGCCAAGCTGATAGCCCAAGATCTACAACCCATGTTA  
 GAGGCCCCAGGCCGACAGCCAGACAGGACTCAGGAGTTCTGACACAGAGCCTTTGGATGAGGACAGCC  
 CTGGGGTATACGAGAATGGACTGACCCCTCAGAGGGCTCTCCGAACTACCCAGCAGCCCCGCCTCCTC  
 CCACCAACCTTGGCGAGCCCTGCCTGCCGGAGTCCACTGCCTCCTGGAGGGAAGTGGGGCCCTTCTCC  
 AGCCCTAAAGCTTGGCCGAGGAGTGGGGGGTCTGGTGGCAGGCAGAGGAAGTGGTATGAGG  
 CTGAGGATGAGGCTGGGTGCAGGTCAGGACCAAGAGATGGTCCCCACTTCTCGGAGGCTGCAGTGA  
 CAGTTCAGGAAGTCTTCGAGAGGAGGAGGGGAAGACGAAGATCCTTGCCTCAACTGAGGGCCCAAGGA  
 GGCTCAGAGTCTGAGCCTGTACCACGCCAGTTTTGAGGGCCTGTCTTCAAGGGTCTGATGCTGGGT  
 GCCTGACAGAAGAGGTTGAGGAGCCTGCTCCACCGAGAGGCCTGCCAGCCGGGAGCTGCCAACCCCT  
 GGTGGTGGGAGCCGTGGCCTGTGAGCCTCAGCCTGGCCTTCTGTTCTCCAGCTCCTCAC

**ACGCGTACGCGGCCGCTCGAG** – GFP Tag – GTTTAA

**Protein Sequence:**

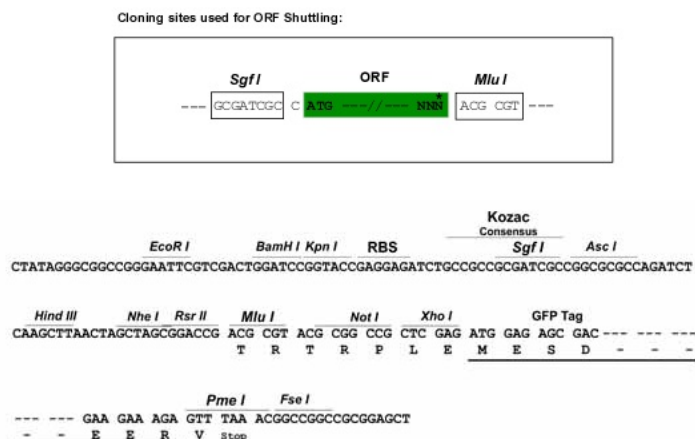
>MG209574 representing BC052722  
 Red=Cloning site Green=Tags(s)

MSPGGKFDFFDGGCYVGGWEAGRAHGYVCTGPGAQGEYSGCWAHGFESLGVFTGPGGHSYQGHWQGGKR  
 EGLGVERKSRWTYRGEWLGGLKGRSGVWESVSLRYAGLWKDGFQDGYGTETYSDDGTYQGQWQAGKRHG  
 YGVRQSVYPYQAALLRSPRRTSLDSGHSPPPTPPPPLPLPGDEGGSPASGSRGGFVLAGPGDADGASSRK  
 RTPAAGGFFRRSLLL SGLRAGRRSSLGSKRSLRSEVSSEVGSTGPPGSEASGPPIPAPPALIEGSATE  
 VYAGEWADRRSGYVQSQRNGLRYEGEWLGNRRHGYGRTRPDGSREEGKYKRNLVHGGRVRSLLPLA  
 LRRGKVKKEKVDRAVEGARRAVSAARQRQEIAAARAADALLKAVAASSVAEKAVEAARMAKLI AQDLQPML  
 EAPRRRPRQSDGSDTEPLDEDSPGVYENGLTPSEGSPPELSSPASHQPWRAPACRSPLPPGGNWPFS  
 SPKAWPEEWGGPEQAEELAGYEADEAGVQGPGRDGSPLLGGCSDSSGSLREEEGEDEESLPQLRAPG  
 GSESEPVTTPLRGLSSRGPDAFGLTTEEVEEPAPTERPAQPGAANPLVVGAVALLDL SLAFLFSQLLT

**TRTRPLE** – GFP Tag – V

**Restriction Sites:**

SgfI-MluI

**Cloning Scheme:**


**ACCN:** BC052722

**ORF Size:** 1884 bp

**OTI Disclaimer:** The molecular sequence of this clone aligns with the gene accession number as a point of reference only. However, individual transcript sequences of the same gene can differ through naturally occurring variations (e.g. polymorphisms), each with its own valid existence. This clone is substantially in agreement with the reference, but a complete review of all prevailing variants is recommended prior to use. [More info](#)

**OTI Annotation:** This clone was engineered to express the complete ORF with an expression tag. Expression varies depending on the nature of the gene.

**Components:** The ORF clone is ion-exchange column purified and shipped in a 2D barcoded Matrix tube containing 10ug of transfection-ready, dried plasmid DNA (reconstitute with 100 ul of water).

**Reconstitution Method:**

1. Centrifuge at 5,000xg for 5min.
2. Carefully open the tube and add 100ul of sterile water to dissolve the DNA.
3. Close the tube and incubate for 10 minutes at room temperature.
4. Briefly vortex the tube and then do a quick spin (less than 5000xg) to concentrate the liquid at the bottom.
5. Store the suspended plasmid at -20°C. The DNA is stable for at least one year from date of shipping when stored at -20°C.

**RefSeq:** [BC052722](#), [AAH52722](#)

**RefSeq Size:** 3571 bp

**RefSeq ORF:** 1886 bp

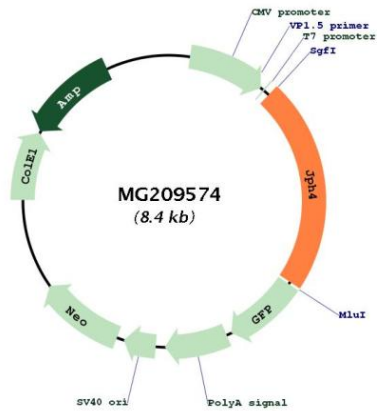
**Locus ID:** 319984

**Cytogenetics:** 14 C3

**Gene Summary:**

Junctophilins contribute to the formation of junctional membrane complexes (JMCs) which link the plasma membrane with the endoplasmic or sarcoplasmic reticulum in excitable cells. Provides a structural foundation for functional cross-talk between the cell surface and intracellular calcium release channels. JPH4 is brain-specific and appears to have an active role in certain neurons involved in motor coordination and memory.[UniProtKB/Swiss-Prot Function]

**Product images:**



Circular map for MG209574